

III

Well Data

INJECTION WELL DATA SHEET

OPERATOR: Chevron U.S.A. Production CompanyWELL NAME & NUMBER: Vacuum Grayburg San Andres Unit
#233WELL LOCATION: 2630' FSL & 660' FWL L 1 18-S 34-E
FOOTAGE LOCATION UNIT LETTER SECTION TOWNSHIP RANGEWELLBORE SCHEMATIC

Please See Attached Wellbore Schematic

WELL CONSTRUCTION DATASurface CasingHole Size: 12-1/4"Casing Size: 8 5/8"Cemented with: 825 sxOr ft3Top of Cement: SurfaceMethod Determined: CirculationProduction CasingHole Size: 7-7/8"Casing Size: 5-1/2"Cemented with : 1300 sx.Or ft3Top of Cement: SurfaceMethod Determined: Total Depth: Injection Interval4366' feetto 4448'

(Perforated or open Hole; indicate which)

INJECTION WELL DATA SHEETWELL NAME & NUMBER: VGSAU #233Tubing Size: 2 3/8" Lining Material: DuolinedType of Packer: 5 1/2" Lock-Set Nickel Plated PackerPacker Setting Depth: 4311Other Type of Tubing/Casing Seal (if applicable): N/AAdditional Data

1. Is this a new well drilled for injection? X Yes No

If no, for what purpose was the well originally drilled? _____

2. Name of the Injection Formation: Grayburg San Andres

3. Name of Field or Pool (if applicable): Vacuum

4. Has the well ever been perforated in any other zone(s)? List all such perforated intervals and give plugging detail, i.e. sacks of cement or plug(s) used. N/A

5. Give the name and depths of any oil or gas zones underlying or overlying the proposed injection zone in this area: N/A

DATE **SEP 18 2003**

VACUUM GRAYBURG SAN ANDRES UNIT NO. 211
PAGE 2

4. TIH with drill pipe to 2700'. Spot 1500 sacks Class H cement. TOH with drill pipe. Shut in and wait on cement. Tag cement plug and plug to surface as required.

VGSAU 211

API # 30-025-24331 35687

Surface Casing:

12 1/4" hole
8 5/8" csg - 24#
set @ 1555'. Cemented w/ 450 sx
class "C" 13.5 ppg cmt and 250 sx
cl "C" 14.8 ppg cmt. (11/25/01).
Top job w/ 1" PVC w/ 50 sx cl
"C" cmt.

710' FSL & 1280' FWL

SEC 1, TWN 18-S, Range 34-E, County Lea

ELEVATION: 3995' GL, 4009' KB

Completed:

Tubing:

1500' - 3 1/2" Tubing

7.875" hole size

Brine

Wellbore Geometry

1555'-1700': Gage hole

1700'- 2576': 8' hole

2576' - 2700': 21' hole

1,240,000 lbs sand
20/40

2- Jts 4 3/4" Drill
Collars'

Coil Tubing: 447'

Water
Flood
Water

TD @ 4765

Zones

Top	Depth	Interval
T Anhydrate	1,598	164
T Salt	1,762	913
B Salt	2,675	198
Yates	2,873	324
7 Rivers	3,197	588
Queen	3,785	458
GB Marker	4,243	93
GB Dol Top	4,336	45
GB Dol Bott	4,381	19
San Andres	4,400	247
LSA	4,647	53
O/W	4,700	

VGSAU 233 WIW

API # 30-025-36355

2630' FSL & 660' FWL

SEC 1, UL "L", TWN 18-S, Range 34-E, County Lea

ELEVATION: 3997' GL, 4003' KB

Completed: 10/20/2003

Surface Casing:

12 1/4" hole
34 JTS 8 5/8" csg - 24#, J55
set @ 1535'. Cemented w/ 545 sx 35:65 POZ
class "C" cmt 12.8 ppg, followed by 200 Sx cl
"C" cmt 14.8 ppg. 80 Sx cement to surface.
(8/14/03)

Production Casing:

7-7/8" hole
106 JTS 5-1/2" csg - 15.5#, J55, LTC
set @ 4600.
Lead: 560 sx 35/65 POX cl "C", 12.8 ppg cmt
Tail: 470 sx 50:50 POX cl "C" 14.2 ppg cmt
Circulated water cement to surface. Well was
flowing (8/20/03)

TOC @ Surface Based on CBL. Good
bond cement below 4000'

Perforation Intervals:

4366'-4385' (19')

4389'-4417' (28')

4425'-4448' (23')

70' - 4 spf, 280 holes, 3 1/8 in. XPS Expendable
(10/14/2003)

Acid from 4366' to 4448' w/ 7,000 gls 15% HCl &
1750# rock salt. First 1000# block had a 2636 psi
increase f/ 2300 to 4936 psi. Second block of 750# rock
salt had an increase of 500 psi f/ 2200 to 2700 psi.
(10/15/2003)

FC @ 4559'

Last Workover:

13-20 Aug-2003: Drilled 10 Acr Injector: Drilled surface hole w/ 12 1/4" bit. Ran 8 5/8" 24#- J55 casing to 1535'. Cement casing to surface w/ 745 sx cl "C" cmt. Drilled production hole w/ 7 7/8" bit. Hit water flow @ 4500' (14 bph). drilled to 4611' and flow increased to 35 bph. Called well TD. Ran 5 1/2" 15.5# - J55 to 4600'. Cemented casing in place w/ 1030 sx C/ "C" cement. watered cement on surface. Released Rig.

13-20 Oct-2003: Initial Completion: perforate 70' - 4 spf, 280 holes, 3 1/8 in. XPS Expendable. Acid from 4366' to 4448' w/ 7,000 gls 15% HCl & 1750# rock salt. First 1000# block had a 2636 psi increase f/ 2300 to 4936 psi. Second block of 750# rock salt had an increase of 500 psi f/ 2200 to 2700 psi. Clean out salt. P/U 5 1/2" Lock set Pkr w/ 136 jts 2 3/8" duolined tbg. Set Pkr @ 4311'. R/D.

INJECTION EQUIPMENT:

1- 5-1/2" Lock set Nickel Plated w/ Pump out plug PKR
136- Joints 2-3/8" Duolined Injection Tbg.

PACKER SET @ 4311'

Zones

Top	Depth	Interval
GB Marker	4,198	
GB Dol Top	4,300	40
GB Dol Bott	4,340	30
San Andres	4,370	200
LSA	4,570	140
O/W	4,710	

TOTAL 410

PBTD @ 4556' (13-Oct-2003)

COMMENTS AND RECOMMENDATIONS:

District I

1625 N. French Dr., Hobbs, NM 88240

District II

1301 W. Grand Ave., Artesia, NM 88210

District III

1000 Rio Brazos Rd., Aztec, NM 87410

District IV

1220 S. St Francis Dr., Santa Fe, NM 87505

State of New Mexico
Energy, Minerals and Natural Resources
Oil Conservation Division
1220 S. St Francis Dr.
Santa Fe, NM 87505

Form C-101

APPLICATION FOR PERMIT TO DRILL

Operator Name and Address Chevron U.S.A. Inc. 15 Smith Road Midland, TX 79705		OGRID Number 4323
		API Number 30-25-36355
Property Code 30022	Property Name VACUUM GRAYBURG SAN ANDRES UNIT	Well No. 233

Surface Location

UL or Lot L	Section 1	Township 18S	Range 34E	Lot Idn	Feet From 2630	N/S Line S	Feet From 660	E/W Line W	County Lea
----------------	--------------	-----------------	--------------	---------	-------------------	---------------	------------------	---------------	---------------

Proposed Pools

VACUUM;GRAYBURG-SAN ANDRES 62180

Work Type New Well	Well Type Injection	Cable/Rotary	Lease Type State	Ground Level Elevation 3997
Multiple N	Proposed Depth 4850	Formation San Andres Formation	Contractor	Spud Date 8/11/2003

Proposed Casing and Cement Program

Type	Hole Size	Casing Size	Casing Weight/ft	Setting Depth	Sacks of Cement	Estimated TOC
Surf	12.25	8.625	24	1550	1200	0
Prod	7.875	5.5	15.5	4850	850	0

Proposed Blowout Prevention Program

Type	Working Pressure	Test Pressure	Manufacturer
Pipe	3000	1500	Shaffer
Blind	3000	1500	Shaffer

I hereby certify that the information given above is true and complete to the best of my knowledge and belief.

Electronically Signed By: Edward Van Reet

Title: Manager

Date: 8/6/2003

Phone: 915-687-7329

OIL CONSERVATION DIVISION

Electronically Approved By: Paul Kautz

Title: Geologist

Approval Date: 8/7/2003

Expiration Date: 8/7/2004

Conditions of Approval:

There are conditions. See Attached.

APD Conditions Of Approval

Operator: 4323 Chevron U.S.A. Inc.

Well: VACUUM GRAYBURG SAN ANDRES UNIT 233

OCD Reviewer	Condition
PKAUTZ	Drilling Fluid Surface Casing. 1) Fresh water or fresh water spud mud shall be used to drill to surface casing depth. 2) Non-toxic or biodegradable water based polymers, drilling paper, starch and gels may be used in the mud system in order to retard seepage into red beds. 3) Caustics and Lime shall not be used in the red beds but may be added when the Rustler Fm is reached. However, sodium carbonate maybe used for alkalinity or ph control while drilling the redbeds above the Rustler Fm.
PKAUTZ	Surface casing should be set at least 25 feet into the top of the Rustler Anhydrite and cement circulated to the surface.

District I

1625 N. French Dr., Hobbs, NM 88240

District II

1301 W. Grand Ave., Artesia, NM 88210

District III

1000 Rio Brazos Rd., Aztec, NM 87410

District IV

1220 S. St Francis Dr., Santa Fe, NM 87505

State of New Mexico
Energy, Minerals and Natural Resources

Form C-102

Oil Conservation Division

1220 S. St Francis Dr.

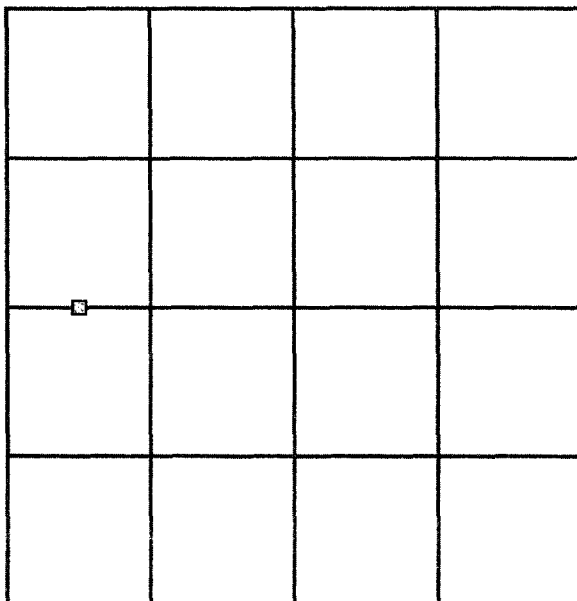
Santa Fe, NM 87505

WELL LOCATION AND ACREAGE DEDICATION PLAT

API Number 30-25-36355	Pool Name VACUUM;GRAYBURG-SAN ANDRES	Pool Code 62180
Property Code 30022	Property Name VACUUM GRAYBURG SAN ANDRES UNIT	Well No. 233
OGRID No. 4323	Operator Name Chevron U.S.A. Inc.	Elevation 3997

Surface And Bottom Hole Location

UL or Lot L	Section 1	Township 18S	Range 34E	Lot Idn	Feet From 2630	N/S Line S	Feet From 660	E/W Line W	County Lea
Dedicated Acres 40		Joint or Infill		Consolidation Code		Order No.			



OPERATOR CERTIFICATION

I hereby certify that the information contained herein is true and complete to the best of my knowledge and belief.

Electronically Signed By: Edward Van Reet

Title: Manager

Date: 8/6/2003

SURVEYOR CERTIFICATION

I hereby certify that the well location shown on this plat was plotted from field notes of actual surveys made by me or under my supervision, and that the same is true and correct to the best of my belief.

Electronically Signed By: John Piper

Date of Survey: 8/4/2003

Certificate Number: 7254

DISTRICT I
P. O. Box 1040, Hobbs, NM 88240

DISTRICT II
P. O. Drawer 80, Artesia, NM 88210

DISTRICT III
1000 1/2 Ave. Brown Rd., Aztec, NM 87410

DISTRICT IV
P. O. Box 2088, Santa Fe, NM 87504-2088

State of New Mexico
Energy, Minerals and Natural Resources Department

OIL CONSERVATION DIVISION
PO Box 2088
Santa Fe, NM 87504-2088

Form C-102
Revised February 10, 1994

Instructions on back

Submit to Appropriate District Office

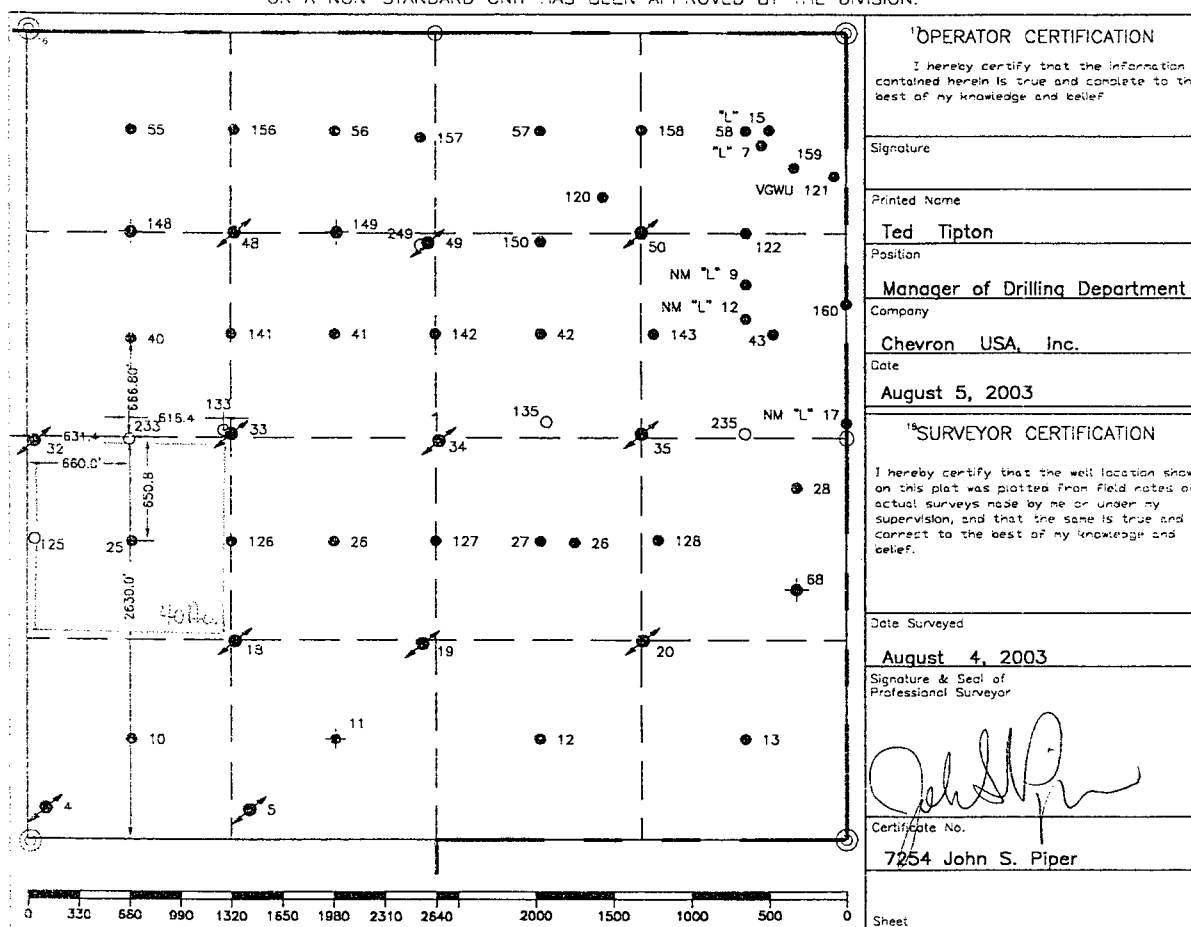
State Lease-4 copies
Free Lease-3 copies

WELL LOCATION AND ACREAGE DEDICATION PLAT

☐ AMENDED REPORT

1 API Number		2 Pool Code		3 Pool Name			
				Vacuum Grayburg San Andres			
4 Property Code		5 Property Name			6 Well Number		
		Vacuum Grayburg San Andres Unit			233		
7 OGRF No.		8 Operator Name			9 Elevation		
		Chevron USA Inc.			3997'		
10 Surface Location							
11 Well or lot no.	12 Section	13 Township	14 Range	15 Lot Ion	16 Feet from the North/South line	17 Feet from the East/West line	18 County
L	1	18-S	34-E		2630'	660'	Lea
19 Bottom Hole Location If Different From Surface							
20 Well or lot no.	21 Section	22 Township	23 Range	24 Lot Ion	25 Feet from the North/South line	26 Feet from the East/West line	27 County
28 Dedicated Acres		29 Joint or Infill	30 Consolidation Code	31 Order No.			
40							

NO ALLOWABLE WILL BE ASSIGNED TO THIS COMPLETION UNTIL ALL INTERESTS HAVE BEEN CONSOLIDATED
OR A NON-STANDARD UNIT HAS BEEN APPROVED BY THE DIVISION.



○ = Staked Location • = Producing Well ↗ = Injection Well ◇ = Water Supply Well ◆ = Plugged & Abandon Well
⊙ = Found Section Corner, 2 or 3" Iron Pipe & GLO B.C. ○ = Found 1/4 Section Corner, 1" Iron Pipe & GLO B.C.

ADDITIONAL INFORMATION ON THE LOCATION

State Plane Coordinates			
Northing 647309.553 (1927=647244.618)		Easting 791198.363 (1927=750019.330)	
Latitude 1983= 32°46'36".657 1927= 32°46'36".316		Longitude 1983= 103°31'13".375 1927= 103°30'56".127	
Zone	North American Datum	Combined Grid Factor	Coordinate File
East	1927	0.99979145	Buckeye.cr5
Drawing File		Field Book	
VGSAU233.dwg		Lea County 23, Pg. 29	

Submit 3 Copies To Appropriate District
Office
District I
1625 N. French Dr., Hobbs, NM 87240
District II
811 South First, Artesia, NM 87210
District III
1000 Rio Brazos Rd., Aztec, NM 87410
District IV
2040 South Pacheco, Santa Fe, NM 87505

State of New Mexico
Energy, Minerals and Natural Resources

Form C-103
Revised March 25, 1999

OIL CONSERVATION DIVISION
2040 South Pacheco
Santa Fe, NM 87505

WELL API NO.

30-025-36355

5. Indicate Type of Lease

STATE ☒ FEE ☐

6. State Oil & Gas Lease No.

7. Lease Name or Unit Agreement Name:

Vacuum Grayburg San Andres Unit

8. Well No.

233

9. Pool name or Wildcat

Vacuum Grayburg San Andres

SUNDRY NOTICES AND REPORTS ON WELLS

(DO NOT USE THIS FORM FOR PROPOSALS TO DRILL OR TO DEEPEN OR PLUG BACK TO A DIFFERENT RESERVOIR. USE "APPLICATION FOR PERMIT" (FORM C-101) FOR SUCH PROPOSALS.)

1. Type of Well:

Oil Well ☐ Gas Well ☐ Other Injection ☐

2. Name of Operator

Chevron U.S.A. Inc.

3. Address of Operator

15 Smith Road - Midland, Texas 79705

4. Well Location

Unit Letter L : 2630 feet from the South line and 660 feet from the West line

Section 1 Township 18S Range 34E NMPM County Lea

10. Elevation (Show whether DR, RKB, RT, GR, etc.)

3997' GL

11. Check Appropriate Box to Indicate Nature of Notice, Report, or Other Data

NOTICE OF INTENTION TO:

PERFORM REMEDIAL WORK ☐ PLUG AND ABANDON ☐

TEMPORARILY ABANDON ☐ CHANGE PLANS ☐

PULL OR ALTER CASING ☐ MULTIPLE COMPLETION ☐

OTHER: ☐

SUBSEQUENT REPORT OF:

REMEDIAL WORK ☒ ALTERING CASING ☐

COMMENCE DRILLING OPNS. ☐ PLUG AND ABANDONMENT ☐

CASING TEST AND CEMENT JOB ☐

OTHER: Vertical Completion ☒

12. Describe Proposed or Completed Operations (Clearly state all pertinent details, and give pertinent dates, including estimated date of starting any proposed work). SEE RULE 1103. For Multiple Completions: Attach wellbore diagram of proposed completion or recompilation.

10-13-03 MIRU. TIH w/bit, dc & 2-7/8" tbg to tag @ 4556'.

10-14-03 TOH w/WS, lay down DC & bit. Perf'd from 4366-4385', 4389-4417', 4425-4448'. TIH w/RBP, 5-1/2" pkr, SN, WS; set RBP @ 4480'.

10-15-03 Acidize Grayburg San Andres perms from 4366'-4448' w/7000 gals 15% NEFE Hcl.

10-16-03 TOH w/pkr & RBP. TIH w/kill string 1987'.

10-17-03 TOH w/WS. TIH w/loc-set pkr & 2-3/8" duo-line tbg. Circ pkr fluid & set pkr @ 4311'.

10-20-03 Chart & test csg to 500 psi (good). RD. FINAL REPORT.

Original chart w/copy attached.

I hereby certify that the information above is true and complete to the best of my knowledge and belief.

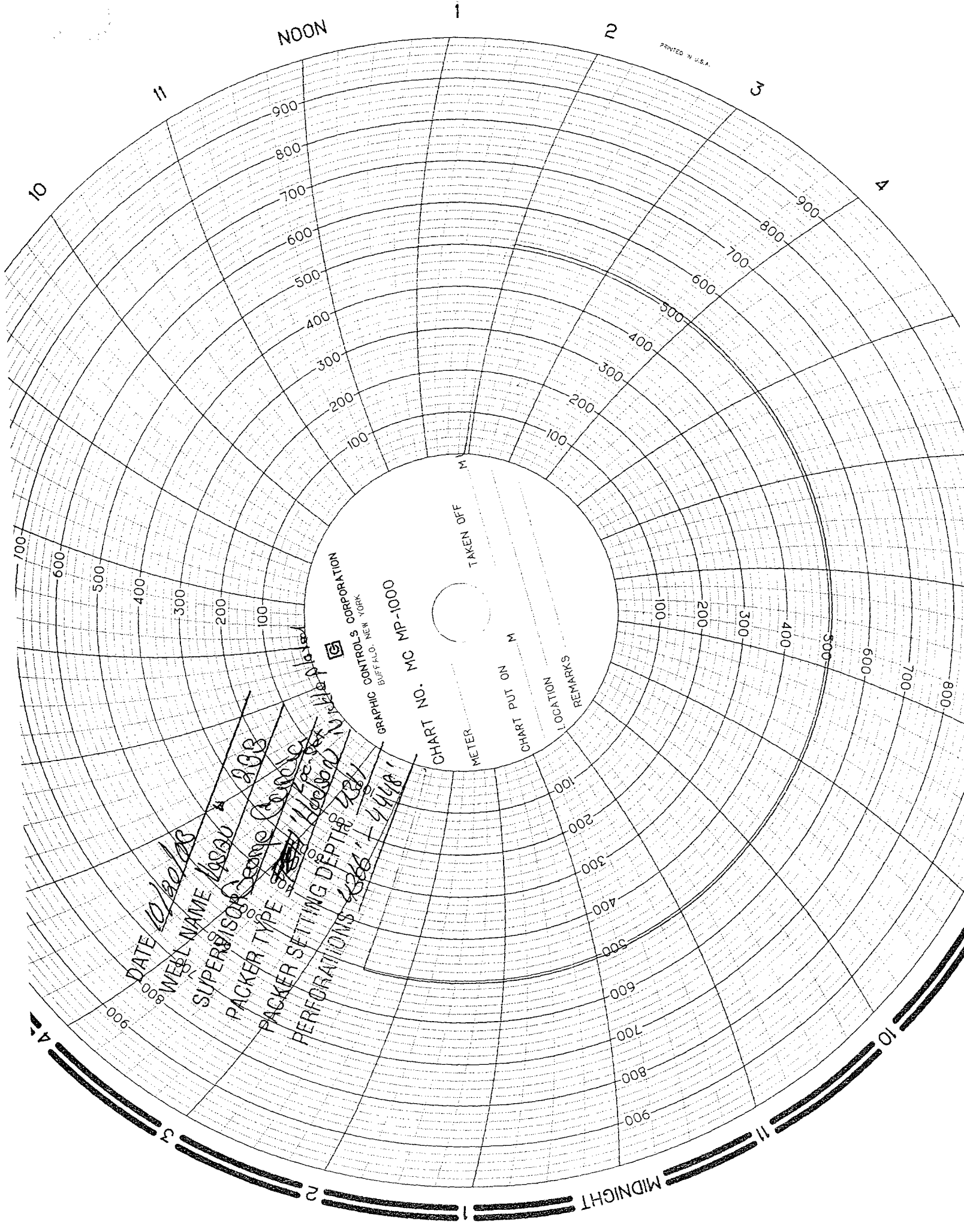
SIGNATURE Laura Skinner TITLE Regulatory Specialist DATE 11-17-03

Type or print name Laura Skinner Telephone No. 432-687-7355

(This space for State use)

APPROVED BY _____ TITLE _____ DATE _____

Conditions of approval, if any:



DATE

10/10/68

WELL NAME

W-330

SUPERVISOR

George Conroy

PACKER TYPE

2000

PACKER SETTING DEPTH

2000

PERFORATIONS

2000 - 4448'

GRAPHIC CONTROLS CORPORATION
BUFFALO, NEW YORK

CHART NO. MC MP-1000

NO. 1 PUL IN METER

LOCATION

SKIN DEPTH

TAKEN OFF

PRINTED IN U.S.A.