

SD-INDBS

August 29, 1995

OIL CONSERVATION DIVISION
RECEIVED



Chevron

Administrative Application For
Simultaneous Dedication
Indian Basin
Upper Penn Gas Pool
Bogle Flats #12
1880' FSL and 1650' FEL
Section 8, T-22-S, R-23-E
Eddy County, New Mexico

'95 SE-19 AM 8 52

Chevron U.S.A. Production Company
P.O. Box 1150
Midland, TX 79702

State of New Mexico
Energy, Minerals & Natural Resources Dept.
Oil Conservation Division
P.O. Box 2088
Santa Fe, New Mexico 87504

Attn.: Mr. William J. LeMay - Director

Dear Mr. LeMay:

Chevron U.S.A. is planning to drill the Bogle Flats Unit #12 in the Upper Penn. Gas Pool. The well will be located 1880' FSL and 1650' FEL in Section 8, T-22-S, R-36-E, Eddy County, New Mexico.

The captioned well will be located in a standard location as part of a 640-acre proration unit which comprises Section 8. Currently, only the Bogle Flats Unit #6 is dedicated to this proration unit. We respectfully request that the Bogle Flats Unit #12 be simultaneously dedicated to the this same proration unit with the Bogle Flats Unit #6.

A copy of this administrative application is being provided to our offset operators via Certified Mail. Attached is a commercial map, and Form C-102 plats which show the locations of the wells in the proration unit. Copies of the letters to our offset operators are also attached.

If you have any questions concerning this matter please contact Michelle LeVan at (915) 687-7307.

Sincerely,

M. L. LeVan
Petroleum Engineer
Indian Basin, New Mexico

Attachments

cc: NMOCD - Hobbs, New Mexico
N. V. Mouser
S. J. Gray
D. K. Owens
J. E. Baca
Well File

August 29, 1995



Simultaneous Dedication
Indian Basin
Bogle Flats
Upper Penn Gas Pool
Eddy County, New Mexico

Chevron U.S.A. Production Company
P.O. Box 1150
Midland, TX 79702

M. W. Petroleum
2000 Post Oak Blvd, Suite 100
Houston, Texas 77056

New Mexico Operations Director:

Attached is a copy of an administrative application for NMOCD approval of a simultaneous dedication in the Upper Penn Gas Pool.

Chevron U.S.A. is planning to drill the Bogle Flats Unit #12 in the Upper Penn. Gas Pool. The well will be located 1880' FSL and 1650' FEL in Section 8, T22S, R36E, Eddy County, New Mexico. We have requested that the NMOCD approve the simultaneous dedication of this well with the Bogle Flats Unit #6, which currently produces on a standard 640 acre proration unit. This proration unit comprises the entirety of Section 8.

If you have any questions about the application, please contact Michelle LeVan at (915) 687-7307.

Sincerely,

A handwritten signature in cursive script that reads "M. L. LeVan".

M. L. LeVan
Petroleum Engineer
Indian Basin, New Mexico

Attachments

cc: Well File

u:\gp_nm\hobbs_molin_basin\projects\bogle_12\ocdlet.doc

August 29, 1995



Chevron

Simultaneous Dedication
Indian Basin
Bogle Flats
Upper Penn Gas Pool
Eddy County, New Mexico

Chevron U.S.A. Production Company
P.O. Box 1150
Midland, TX 79702

Oryx
Box 2880
Dallas, Texas 75221-2880

New Mexico Operations Director:

Attached is a copy of an administrative application for NMOCD approval of a simultaneous dedication in the Upper Penn Gas Pool.

Chevron U.S.A. is planning to drill the Bogle Flats Unit #12 in the Upper Penn. Gas Pool. The well will be located 1880' FSL and 1650' FEL in Section 8, T22S, R36E, Eddy County, New Mexico. We have requested that the NMOCD approve the simultaneous dedication of this well with the Bogle Flats Unit #6, which currently produces on a standard 640 acre proration unit. This proration unit comprises the entirety of Section 8.

If you have any questions about the application, please contact Michelle LeVan at (915) 687-7307.

Sincerely,

A handwritten signature in cursive script, reading "M. L. LeVan".

M. L. LeVan
Petroleum Engineer
Indian Basin, New Mexico

Attachments

cc: Well File

u:\gp_nm\hobbs_mo\in_basin\projects\bogle_12\ocdlet.doc

August 29, 1995



Chevron

**Simultaneous Dedication
Indian Basin
Bogle Flats
Upper Penn Gas Pool
Eddy County, New Mexico**

Chevron U.S.A. Production Company
P.O. Box 1150
Midland, TX 79702

Marathon
Box 552
Midland, Texas 79702

New Mexico Operations Director:

Attached is a copy of an administrative application for NMOCD approval of a simultaneous dedication in the Upper Penn Gas Pool.

Chevron U.S.A. is planning to drill the Bogle Flats Unit #12 in the Upper Penn. Gas Pool. The well will be located 1880' FSL and 1650' FEL in Section 8, T22S, R36E, Eddy County, New Mexico. We have requested that the NMOCD approve the simultaneous dedication of this well with the Bogle Flats Unit #6, which currently produces on a standard 640 acre proration unit. This proration unit comprises the entirety of Section 8.

If you have any questions about the application, please contact Michelle LeVan at (915) 687-7307.

Sincerely,

A handwritten signature in black ink, appearing to read "M. L. LeVan", written in a cursive style.

M. L. LeVan
Petroleum Engineer
Indian Basin, New Mexico

Attachments

cc: Well File

u:\gp_nm\hobbs_mo\in_basin\projects\bogle_12\ocdlet.doc

August 29, 1995



Simultaneous Dedication
Indian Basin
Bogle Flats
Upper Penn Gas Pool
Eddy County, New Mexico

Chevron U.S.A. Production Company
P.O. Box 1150
Midland, TX 79702

Parker & Parsley Producing
Box 3178
Midland, Texas 79701

New Mexico Operations Director:

Attached is a copy of an administrative application for NMOCD approval of a simultaneous dedication in the Upper Penn Gas Pool.

Chevron U.S.A. is planning to drill the Bogle Flats Unit #12 in the Upper Penn. Gas Pool. The well will be located 1880' FSL and 1650' FEL in Section 8, T22S, R36E, Eddy County, New Mexico. We have requested that the NMOCD approve the simultaneous dedication of this well with the Bogle Flats Unit #6, which currently produces on a standard 640 acre proration unit. This proration unit comprises the entirety of Section 8.

If you have any questions about the application, please contact Michelle LeVan at (915) 687-7307.

Sincerely,

A handwritten signature in cursive script that reads "M. L. LeVan".

M. L. LeVan
Petroleum Engineer
Indian Basin, New Mexico

Attachments

cc: Well File

u:\gp_nm\hobbs_mo\in_basin\projects\bogle_12\ocdlet.doc

August 29, 1995



Chevron

Simultaneous Dedication
Indian Basin
Bogle Flats
Upper Penn Gas Pool
Eddy County, New Mexico

Chevron U.S.A. Production Company
P.O. Box 1150
Midland, TX 79702

Kerr McGee
Box 25861
Oklahoma City, OK 73125

New Mexico Operations Director:

Attached is a copy of an administrative application for NMOCD approval of a simultaneous dedication in the Upper Penn Gas Pool.

Chevron U.S.A. is planning to drill the Bogle Flats Unit #12 in the Upper Penn. Gas Pool. The well will be located 1880' FSL and 1650' FEL in Section 8, T22S, R36E, Eddy County, New Mexico. We have requested that the NMOCD approve the simultaneous dedication of this well with the Bogle Flats Unit #6, which currently produces on a standard 640 acre proration unit. This proration unit comprises the entirety of Section 8.

If you have any questions about the application, please contact Michelle LeVan at (915) 687-7307.

Sincerely,

A handwritten signature in cursive script, appearing to read "M. L. LeVan".

M. L. LeVan
Petroleum Engineer
Indian Basin, New Mexico

Attachments

cc: Well File

u:\gp_nm\hobbs_mo\in_basin\projects\bogle_12\ocdlet.doc

CHEVRON U.S.A. INC.
Bogle Flats Unit
Well No. 12

Administrative Application for
Simultaneous Dedication
Indian Basin
Upper Penn Gas Pool
1880' FSL and 1650' FEL
Section 8, T22S, R23E
Eddy County, New Mexico

OFFSET OPERATORS

M.W. Petroleum
2000 Post Oak Blvd, Ste 100
Houston, Texas 77056

Oryx
Box 2880
Dallas, Texas 75221-2880

Marathon
Box 552
Midland, Texas 79702

P&P Producing
Box 3178
Midland, Texas 79701

Kerr McGee
Box 25861
Oklahoma City, Oklahoma 73125

CHEVRON U.S.A. INC.

Bogle Flats Unit

Well No. 12

Administrative Application for
Simultaneous Dedication

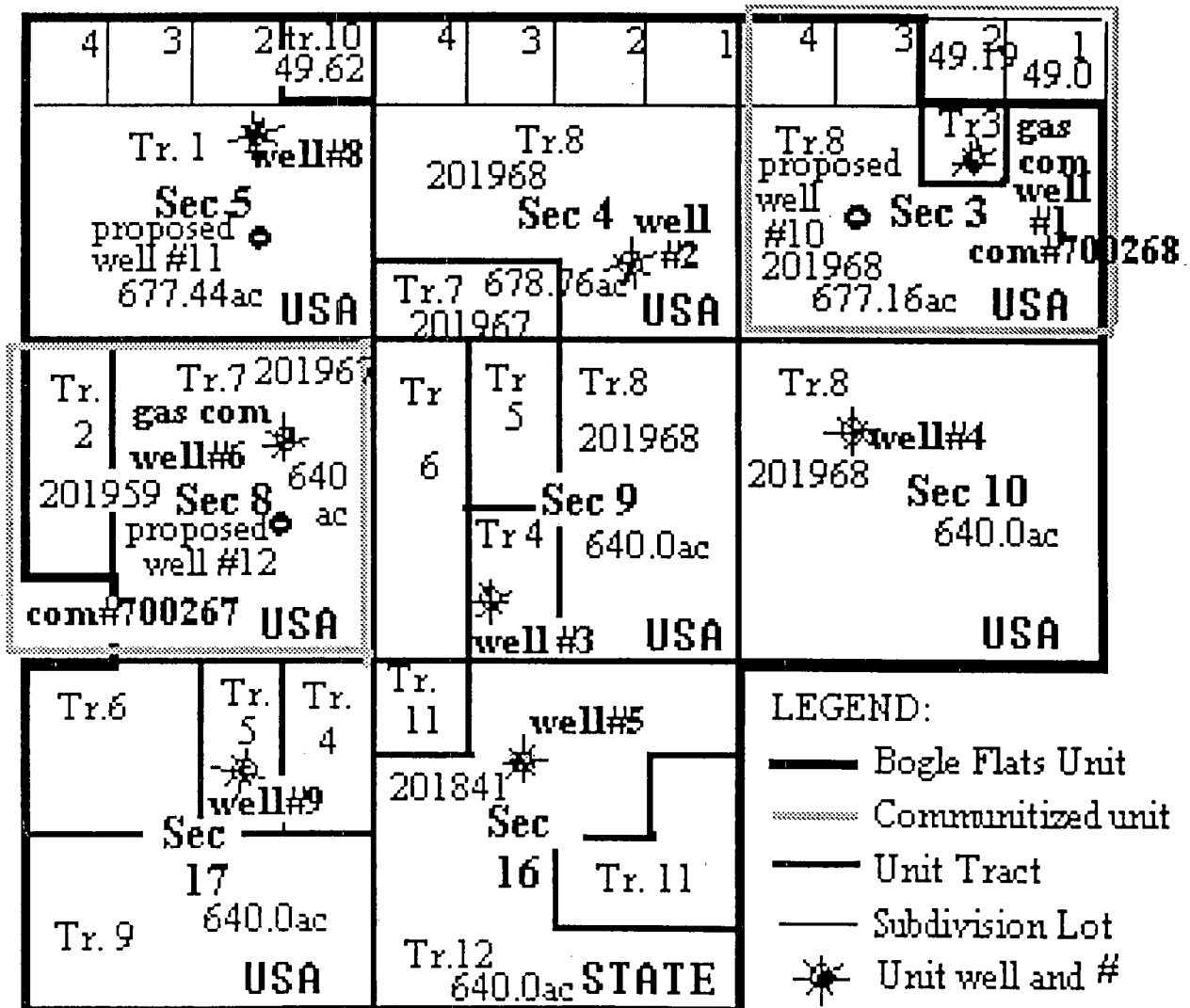
Indian Basin

Upper Penn Gas Pool

1880' FSL and 1650' FEL

Section 8, T22S, R23E

Eddy County, New Mexico



Submit to Appropriate
District Office
State Lease - 4 copies
Fee Lease - 3 copies

State of New Mexico
Energy, Minerals and Natural Resources Department

Form C-102
Revised 1-1-89

OIL CONSERVATION DIVISION

P.O. Box 2088
Santa Fe, New Mexico 87504-2088

DISTRICT I
P.O. Box 1980, Hobbs, NM 88240

DISTRICT II
P.O. Drawer DD, Artesia, NM 88210

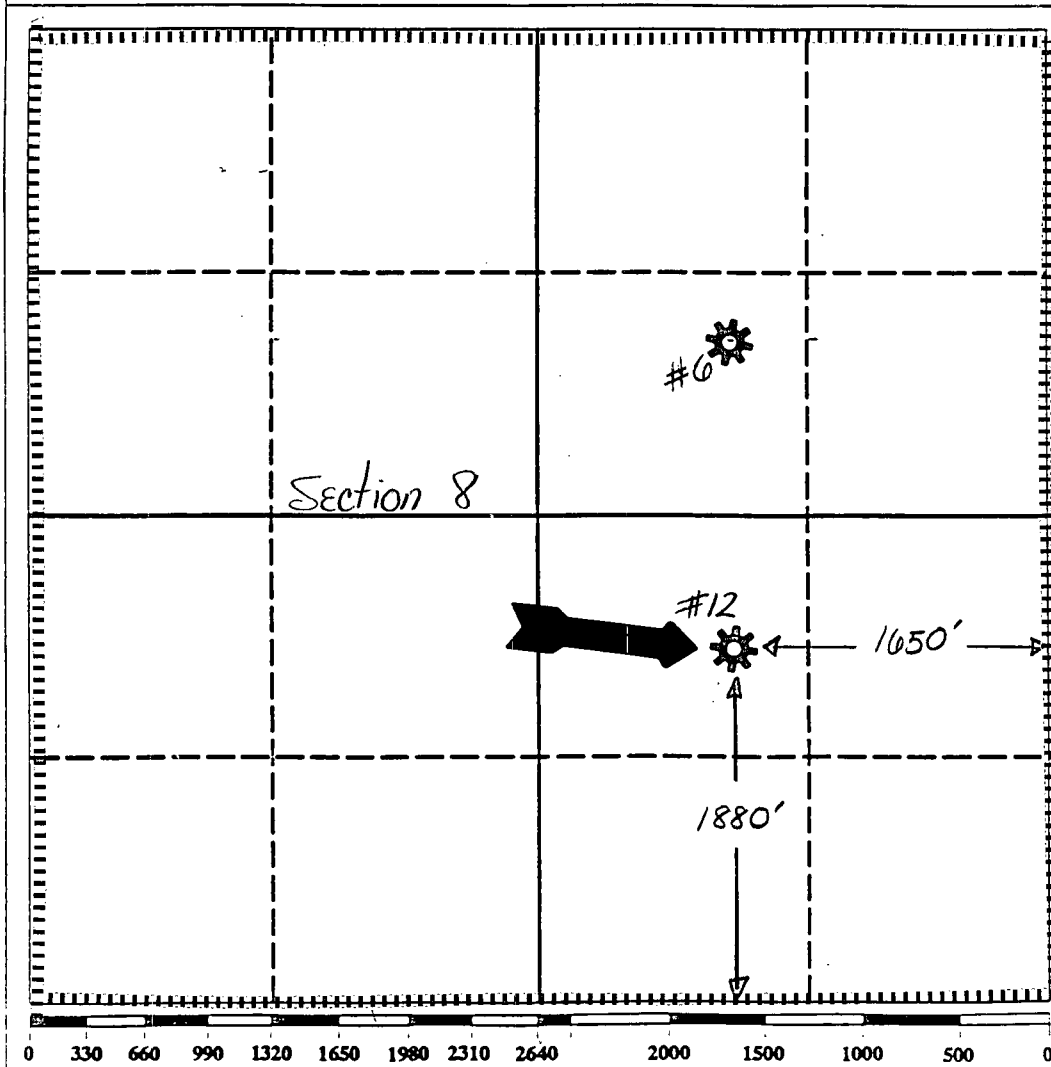
DISTRICT III
1000 Rio Brazos Rd., Aztec, NM 87410

WELL LOCATION AND ACREAGE DEDICATION PLAT

All Distances must be from the outer boundaries of the section

Operator <u>Chevron</u>			Lease <u>Bogle Flats</u>		Well No. <u>#12</u>
Unit Letter	Section <u>8</u>	Township <u>22S</u>	Range <u>23E</u>	County <u>Eddy</u>	NMPM
Actual Footage Location of Well: <u>1880</u> feet from the <u>South</u> line and <u>1650</u> feet from the <u>East</u> line					
Ground level Elev.	Producing Formation <u>Cisco Canyon</u>		Pool <u>Upper Penn. Gas Pool</u>		Dedicated Acreage: <u>640</u> Acres

- Outline the acreage dedicated to the subject well by colored pencil or hatchure marks on the plat below.
- If more than one lease is dedicated to the well, outline each and identify the ownership thereof (both as to working interest and royalty).
- If more than one lease of different ownership is dedicated to the well, have the interest of all owners been consolidated by communitization, unitization, force-pooling, etc.?
☒ Yes ☐ No If answer is "yes" type of consolidation Communitization
If answer is "no" list the owners and tract descriptions which have actually been consolidated. (Use reverse side of this form if necessary.)
No allowable will be assigned to the well until all interests have been consolidated (by communitization, unitization, forced-pooling, or otherwise) or until a non-standard unit, eliminating such interest, has been approved by the Division.



OPERATOR CERTIFICATION

I hereby certify that the information contained herein is true and complete to the best of my knowledge and belief.

Signature Michelle L. LeVan
Printed Name Michelle L. LeVan
Position Petroleum Engineer
Company Chevron
Date 8/28/95

SURVEYOR CERTIFICATION

I hereby certify that the well location shown on this plat was plotted from field notes of actual surveys made by me or under my supervision, and that the same is true and correct to the best of my knowledge and belief.

Date Surveyed

Signature & Seal of
Professional Surveyor

Certificate No.

Submit to Appropriate
District Office
State Lease - 4 copies
Fee Lease - 3 copies

State of New Mexico
Energy, Minerals and Natural Resources Department

Form C-102
Revised 1-1-89

OIL CONSERVATION DIVISION

P.O. Box 2088
Santa Fe, New Mexico 87504-2088

DISTRICT I
P.O. Box 1980, Hobbs, NM 88240

DISTRICT II
P.O. Drawer DD, Artesia, NM 88210

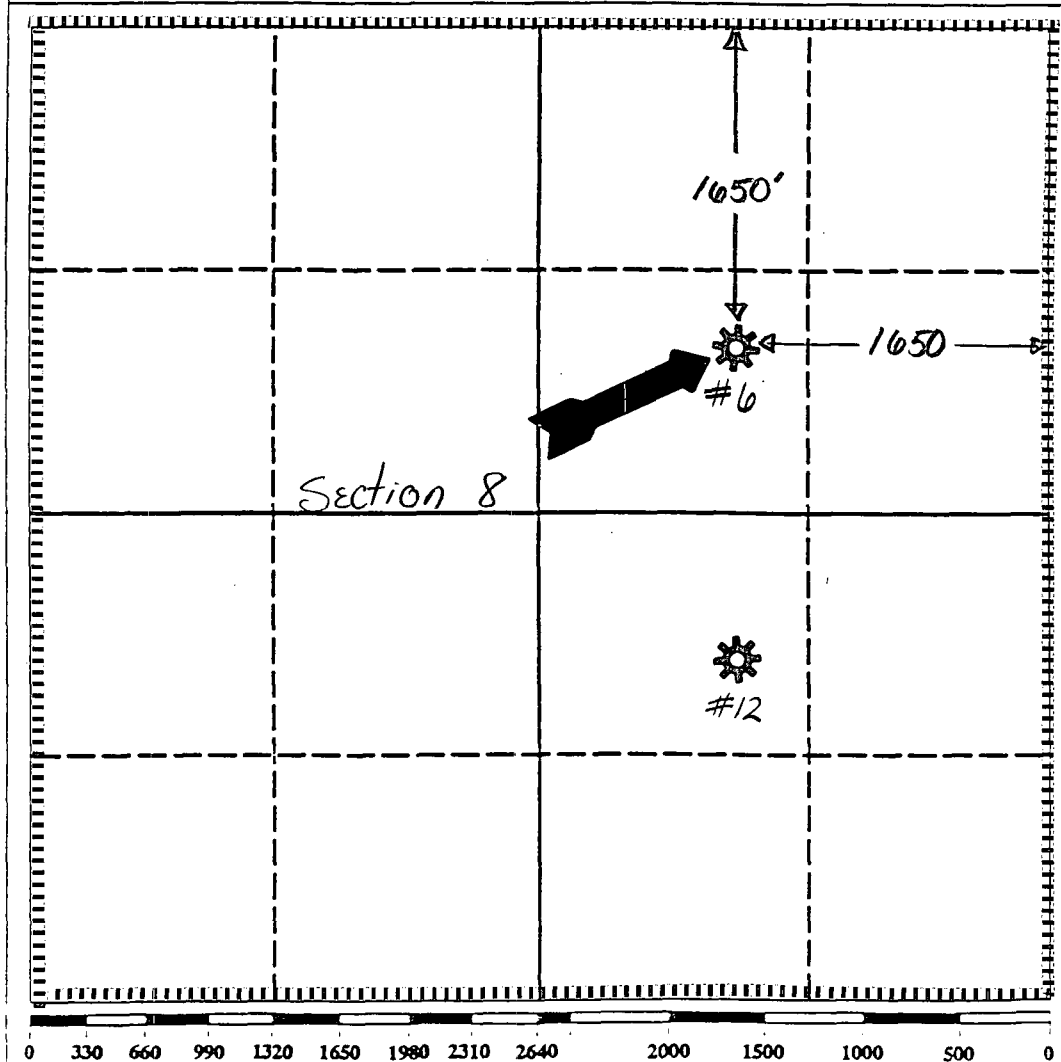
DISTRICT III
1000 Rio Brazos Rd., Aztec, NM 87410

WELL LOCATION AND ACREAGE DEDICATION PLAT

All Distances must be from the outer boundaries of the section

Operator Chevron		Lease Bogle Flats		Well No. #6	
Unit Letter	Section 8	Township 22 S	Range 23 E	County Eddy	
Actual Footage Location of Well: 1650' feet from the North line and 1650' feet from the East line					
Ground level Elev.	Producing Formation Cisco Canyon		Pool Upper Penn. Gas Pool	Dedicated Acreage: 640 Acres	

- Outline the acreage dedicated to the subject well by colored pencil or hatchure marks on the plat below.
- If more than one lease is dedicated to the well, outline each and identify the ownership thereof (both as to working interest and royalty).
- If more than one lease of different ownership is dedicated to the well, have the interest of all owners been consolidated by communitization, unitization, force-pooling, etc?
☒ Yes ☐ No If answer is "yes" type of consolidation **Communitization**
If answer is "no" list the owners and tract descriptions which have actually been consolidated. (Use reverse side of this form if necessary.)
No allowable will be assigned to the well until all interests have been consolidated (by communitization, unitization, forced-pooling, or otherwise) or until a non-standard unit, eliminating such interest, has been approved by the Division.



OPERATOR CERTIFICATION I hereby certify that the information contained herein is true and complete to the best of my knowledge and belief. <i>Michelle L. LeVan</i> Signature Michelle L. LeVan Printed Name Petroleum Engineer Position Chevron Company 8/28/95 Date	
SURVEYOR CERTIFICATION I hereby certify that the well location shown on this plat was plotted from field notes of actual surveys made by me or under my supervision, and that the same is true and correct to the best of my knowledge and belief. Date Surveyed Signature & Seal of Professional Surveyor Certificate No.	