

GW - 032

**FACILITY-WIDE GW
MONITOR PLAN (2)
MAPS**

2010 - Present



BILL RICHARDSON
Governor

DIANE DENISH
Lieutenant Governor

**NEW MEXICO
ENVIRONMENT DEPARTMENT**

Hazardous Waste Bureau

2905 Rodeo Park Drive East, Building 1
Santa Fe, New Mexico 87505-6303
Phone (505) 476-6000 Fax (505) 476-6030
www.nmenv.state.nm.us



RON CURRY
Secretary

SARAH COTTRELL
Deputy Secretary

CERTIFIED MAIL - RETURN RECEIPT REQUESTED

August 25, 2010

Mr. Ed Riege
Environmental Manager
Western Refining, Southwest Inc., Gallup Refinery
Route 3, Box 7
Gallup, New Mexico 87301

**RE: APPROVAL WITH MODIFICATIONS
FACILITY WIDE GROUNDWATER MONITORING WORK PLAN
WESTERN REFINING COMPANY SOUTHWEST, INC., GALLUP REFINERY
EPA ID # NMD000333211
HWB-GRCC-09-001**

Dear Mr. Riege:

The New Mexico Environment Department (NMED) has completed its review of the revised *Facility Wide Groundwater Monitoring Work Plan* (Work Plan), dated June 2010, submitted on behalf of Western Refining Company Southwest Inc., Gallup Refinery (Permittee) and hereby issues this Approval with modifications.

Comment 1

The Permittee provided the revised Figure 5 (Map of Groundwater Flow) as required by NMED's Notice of Disapproval, dated June 7, 2010. The Permittee also provided additional groundwater flow maps (Figure 5, now called Sonsela Water Piezometric Surface July – August 2009; Chinle Gp./Alluvium Interface Water Piezometric Surface (February 2009); Chinle Gp./Alluvium Interface Water Piezometric Surface (July – August 2009); Chinle Gp./Alluvium Interface Water Piezometric Surface (November 2009). The Permittee must also provide the data used to generate the groundwater contour maps; NMED cannot review the Figures without the data. The Permittee must provide NMED with the groundwater data by September 30, 2010.

Ed Riege
Gallup Refinery
August 25, 2010
Page 2

Comment 2

The Permittee must provide large-scale figures (i.e., 24 inches x 36 inches) of the groundwater contour maps (Figure 5, et al.) to add to the Report. The Permittee must provide NMED the large-scale maps by September 30, 2010.

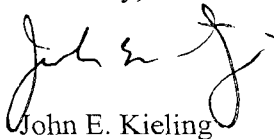
Comment 3

In response to Comment 5 of NMED's June 7, 2010 NOD, the Permittee states, "Western revised the Table to Appendix C to include the information requested by NMED HWB. We are field verifying the well-casing stick up lengths." The Permittee must provide the field-corroborated groundwater well stick-up data (e.g., groundwater elevation, stick-up lengths, top of casing elevations) in the updated Facility Wide Groundwater Monitoring Report as well as the 2010 Facility Wide Groundwater Monitoring Work Plan.

The Permittee must address all comments in this Approval with Modifications and provide NMED with the necessary documentation required in Comments 1 and 2 by September 30, 2010.

If you have questions regarding this Approval with Modifications please contact Kristen Van Horn of my staff at 505-476-6046.

Sincerely,



John E. Kieling
Program Manager
Permits Management Program
Hazardous Waste Bureau

cc: D. Cobrain NMED HWB
H. Monzeglio NMED HWB
K. Van Horn NMED HWB
C. Chavez, OCD
J. Lieb, Gallup

File: Reading File and WRG 2010 File
GRCC-09-001



GALLUP

WNR
LISTED
NYSE

July 30, 2010

James P. Bearzi, Chief
New Mexico Environment Department
Hazardous Waste Bureau
2905 Rodeo Park Drive East, BLDG 1
Santa Fe NM 87505

**Re: Facility Wide Groundwater Monitoring Work Plan, Western Refining
Company Southwest, Inc., Gallup Refinery
EPA ID# NMD000333211,
HWB-GRCC-09-001**

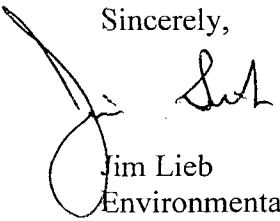
Dear Mr. Bearzi:

Western Refining Southwest, Inc. - Gallup Refinery has had prepared a revised Figure 5 as required by the NMED-HWB's Comment number 4 in the comments NMED-HWB provided in the letter to the Western Refining Gallup refinery dated June 7, 2010. The Figure 5 has been revised to include well data from multiple wells at the refinery based on 2009 sample data. The figure shows the general trend of groundwater at the Sonsela is toward the northwest.

The Gallup Refinery has also had prepared the water contour maps at various seasons as promised in our work plan. The figures are included in this package with Figure 5.

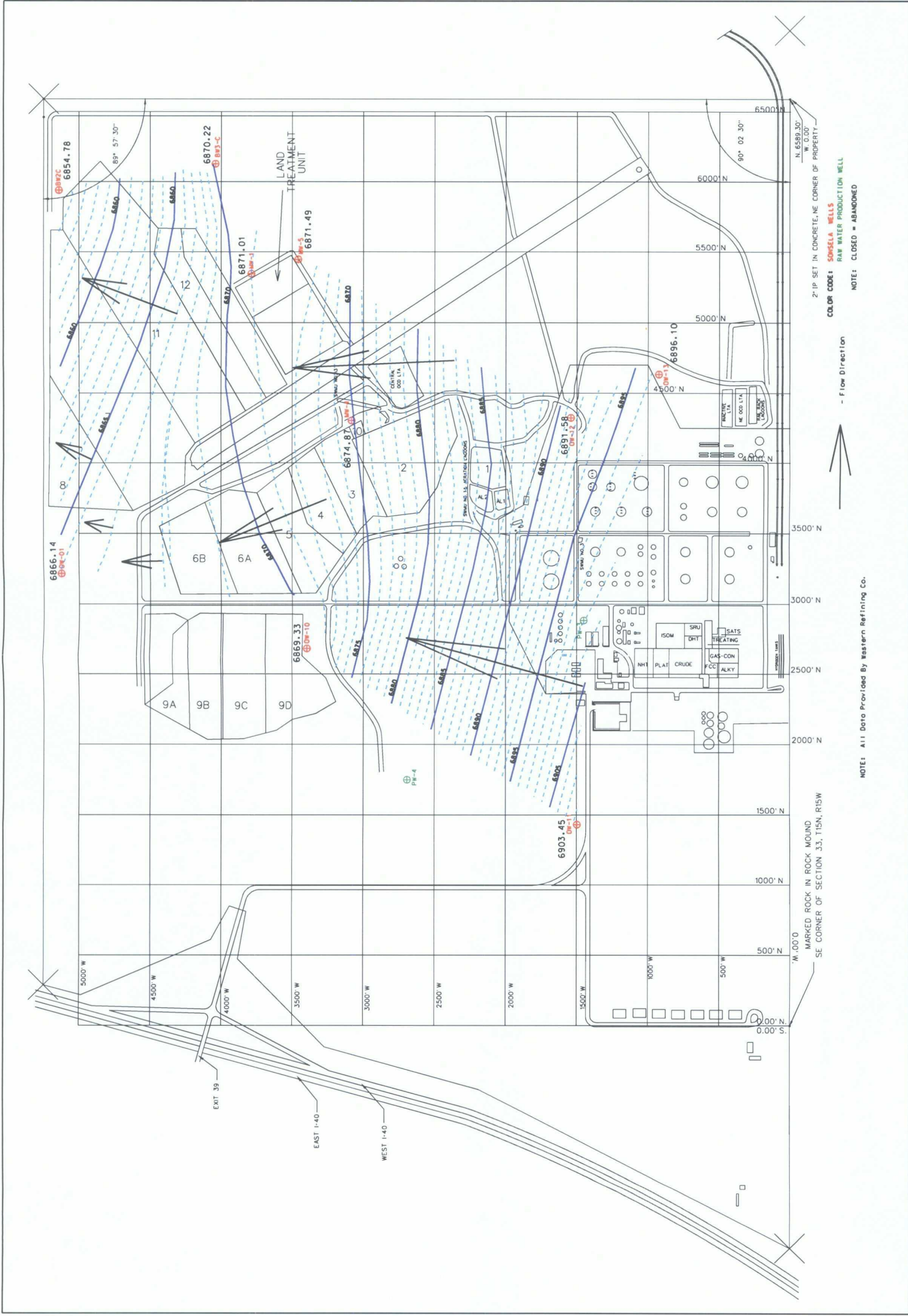
If you have any questions regarding the figures, please contact me at (505) 863-0921.

Sincerely,



Jim Lieb
Environmental Engineer
Gallup Refinery, Western Refining

Cc: C. Chavez
Ed Riege
Mark Turri







1" = 500'

File 10-007

Western Refining - Ciniza Refinery
Interstate 40, Exit 39
Jamestown, New Mexico 87347
Date: July 25, 2010

Figure 5
Sonsela Water
Piezometric Surface (July-August 2009)

