

THOMAS A. DUGAN

Registered Professional Engineer

1007 North Dustin

Phone DAvis 5-9184

Farmington, New Mexico

August 24, 1961

Int'l.

Mr. A. L. Porter, Jr., Director
New Mexico Oil Conservation Commission
P. O. Box 871
Santa Fe, New Mexico

Dear Mr. Porter:

In our previous letter of August 3, 1961, we inadvertently showed the location of the International Oil Corporation's Fogelson #1-2 as 990' FSL and 990' FEL. The correct location should be 1550' FSL and 1450' FEL of Section 2, T29N - R11W, San Juan County, New Mexico.

International Oil Corporation is requesting administrative approval for a non-standard Proration Unit covering the E/2 of Section 2, T29N - R11W.

Very truly yours,

Thomas A. Dugan
Thomas A. Dugan

TAD:pm
Attachment

cc: International Oil Corporation
2010 Republic Bank Building
Dallas, Texas

Messrs. Johnny Walker
Commissioner of Public Lands
State Capitol Building
Santa Fe, New Mexico

R. S. Morris, Attorney
P. O. Box 871
Santa Fe, New Mexico

3-NMOCC
1-Land Office
1-Morris
1-Intern.
1-File

NEW MEXICO OIL CONSERVATION COMMISSION
Well Location and Acreage Dedication Plat

Section A.

Date August 24, 1961

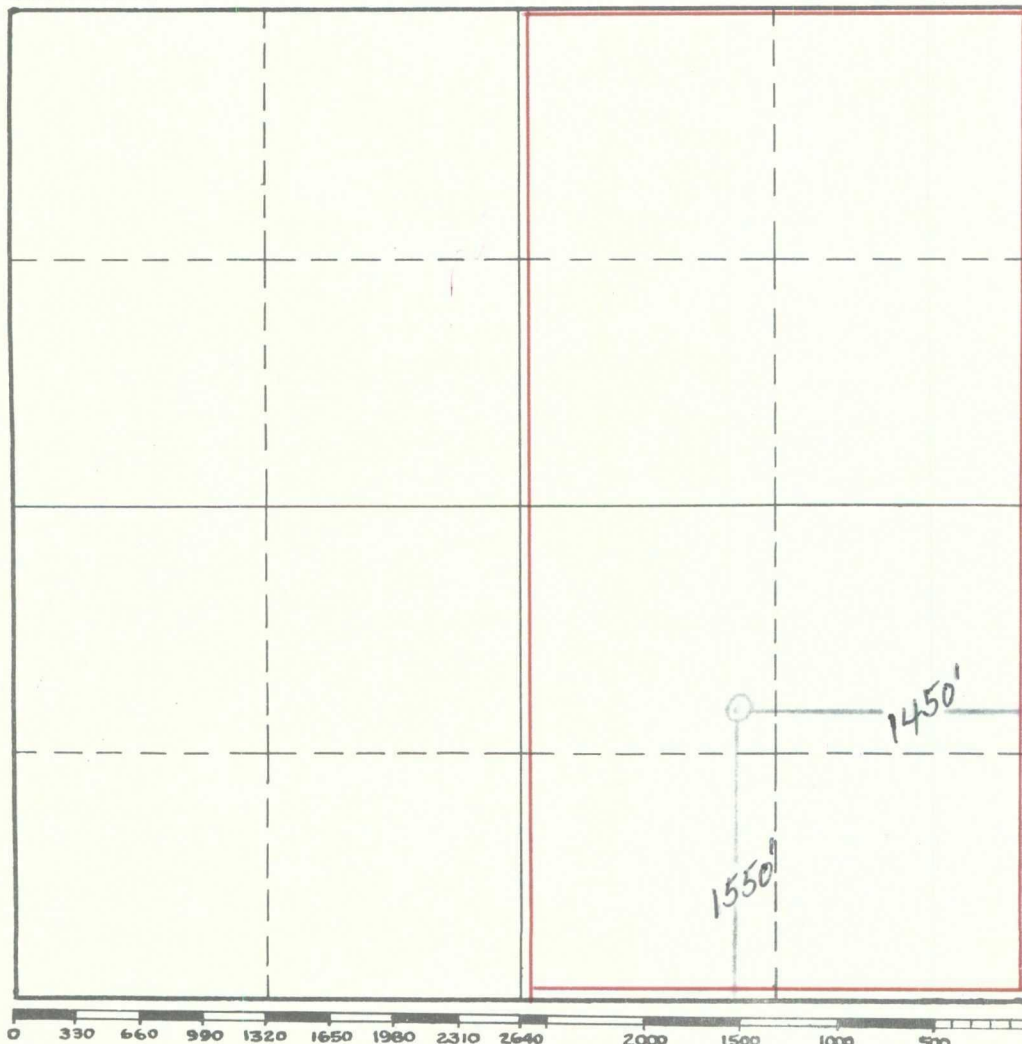
Operator International Oil Corp. Lease AM Fogelson
Well No. 1-2 Unit Letter J Section 2 Township 29 North Range 11 West NMPM
Located 1550 Feet From South Line, 1450 Feet From East Line
County San Juan G. L. Elevation 5759 Dedicated Acreage 305.11 Acres
Name of Producing Formation Dakota Pool Basin

1. Is the Operator the only owner* in the dedicated acreage outlined on the plat below?
Yes _____ No X.
2. If the answer to question one is "no," have the interests of all the owners been consolidated by communitization agreement or otherwise? Yes X No _____. If answer is "yes," Type of Consolidation Communitization Agreement
3. If the answer to question two is "no," list all the owners and their respective interests below:

Owner

Land Description

Section B



This is to certify that the information in Section A above is true and complete to the best of my knowledge and belief.

International Oil Corp.

(Operator)

Original signed by T. A. Dugan

(Representative)

1007 North Dustin
Farmington, New Mexico

Address

This is to certify that the well location shown on the plat in Section B was plotted from field notes of actual surveys made by me or under my supervision and that the same is true and correct to the best of my knowledge and belief.

Date Surveyed _____

Registered Professional
Engineer and/or Land Surveyor.

Certificate No. _____
(See instructions for completing this form on the reverse side)