



# New Mexico Energy, Minerals and Natural Resources Department

**Bill Richardson**

Governor

**Jim Noel**

Cabinet Secretary

**Karen W. Garcia**

Deputy Cabinet Secretary

**Mark Fesmire**

Division Director

Oil Conservation Division



September 29, 2010

Ms. Ocean Munds-Dry  
Holland & Hart LLP  
P.O. Box 2208  
Santa Fe, NM 87504

**Administrative Order NSL-6276**

**Re: BOPCO, L.P.  
Poker Lake Unit 293 Well No. 1H/2H  
API No. 30-015-35548  
810 feet FNL & 1980 feet FEL  
Unit B, Section 21-24S-30E  
Eddy County, New Mexico**

Dear Ms Munds-Dry:

Reference is made to the following:

(a) your application (**administrative application reference No. pTGW10-24632686**) submitted to the New Mexico Oil Conservation Division (the Division) in Santa Fe, New Mexico, on behalf of BOPCO, L.P. [OGRID 260737] (BOPCO), on September 1, 2010, and

(b) the Division's records pertinent to this request.

BOPCO has requested to drill the above-referenced well as a multi-lateral horizontal well in the Delaware formation, at a location that will be unorthodox under Division Rule 16.14.B(2). The proposed surface location, point of penetration and terminus of the well are as follows:

Surface Location: 810 feet from the North line and 1980 feet from the East line  
(Unit B) of Section 21, Township 24S, Range 30E, NMPM  
Eddy County, New Mexico

Point of Penetration: same as surface location

Oil Conservation Division

1220 South St. Francis Drive • Santa Fe, New Mexico 87505

Phone (505) 476-3440 • Fax (505) 476-3462 • [www.emnrd.state.nm.us/OCD](http://www.emnrd.state.nm.us/OCD)



Terminus – first lateral	1650 feet from the North line and 1950 feet from the East line (Unit G) of Section 27 of said township and range
Terminus - second lateral	330 feet from the North and East lines (Unit A) of Section 17 of said township and range
Project Area	Section 16: NW/4 and S/2 of NW/4, N/2 and SE/4 of SW/4, SW/4 of SE/4  Section 17: NE/4 of NE/4  Section 21: NW/4 and S/2 of NE/4, NE/4 of SE/4  Section 22: NW/4 and S/2 of SW/4  Section 27: NE/4 of NW/4 and W/2 of NE/4

The tracts identified above will be dedicated to the proposed well to form a project area comprising 18 standard 40-acre spacing units and project area in the Dog Town Draw-Delaware Pool (17975). This pool is governed by statewide Rule 15.9.A, which provides for 40-acre units, with wells located at least 330 feet from a unit outer boundary. This location is unorthodox because portions of the producing interval will be less than 330 feet from the boundaries of the project area, and therefore outside the producing area.

Your application has been duly filed under the provisions of Division Rules 15.13 and 4.12.A(2).

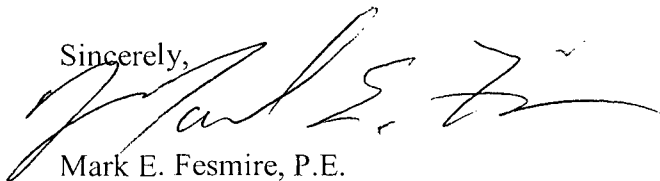
It is our understanding that you are seeking this location because to maximize oil recovery from this project area. It is further understood notice of this application to offsetting operators or owners is not required because of common ownership.

Pursuant to the authority conferred by Division Rule 15.13.B, the above-described unorthodox location is hereby approved.

This approval is subject to your being in compliance with all other applicable Division rules, including, but not limited to Division Rule 5.9.

Jurisdiction of this case is retained for the entry of such further orders as the Division may deem necessary.

Sincerely,



Mark E. Fesmire, P.E.  
Acting Director

MEF/db

cc: New Mexico Oil Conservation Division - Artesia  
United States Bureau of Land Management

**DISTRICT IV**  
1220 St. Francis Dr., Santa Fe, NM 87505

**OIL CONSERVATION DIVISION**  
1220 South St. Francis Dr.  
Santa Fe, New Mexico 87505

Submit to Appropriate District Office  
State Lease - 4 Copies  
Fee Lease - 3 Copies

☐ AMENDED REPORT

## WELL LOCATION AND ACREAGE DEDICATION PLAT

API Number		Pool Code	Pool Name
Property Code	Property Name POKER LAKE UNIT 293		Well Number 2H
OGRID No.	Operator Name BOPCO, L.P.		Elevation 3343'

### Surface Location

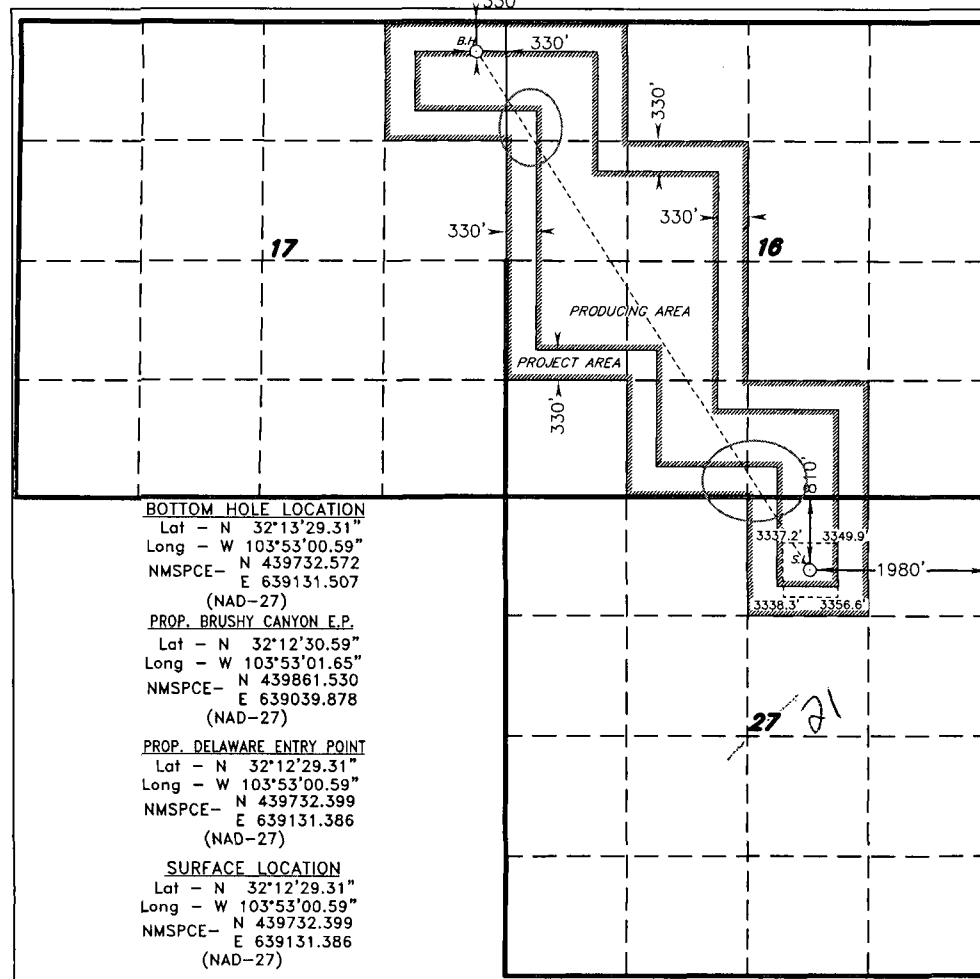
UL or lot No.	Section	Township	Range	Lot Idn	Feet from the	North/South line	Feet from the	East/West line	County
B	21	24 S	30 E		810	NORTH	1980	EAST	EDDY

## Bottom Hole Location If Different From Surface

UL or lot No.	Section	Township	Range	Lot Idn	Feet from the	North/South line	Feet from the	East/West line	County
A	17	24 S	30 E		330	NORTH	330	EAST	EDDY

Dedicated Acres	Joint or Infill	Consolidation Code	Order No.
-----------------	-----------------	--------------------	-----------

NO ALLOWABLE WILL BE ASSIGNED TO THIS COMPLETION UNTIL ALL INTERESTS HAVE BEEN CONSOLIDATED  
OR A NON-STANDARD UNIT HAS BEEN APPROVED BY THE DIVISION



## OPERATOR CERTIFICATION

I hereby certify that the information contained herein is true and complete to the best of my knowledge and belief, and that this organization either owns a working interest or unleased mineral interest in the land including the proposed bottom hole location pursuant to a contract with an owner of such a mineral or working interest, or to a voluntary pooling agreement or a compulsory pooling order heretofore entered by the division.

Signature \_\_\_\_\_ Date \_\_\_\_\_

Printed Name \_\_\_\_\_

### SURVEYOR CERTIFICATION

I hereby certify that the well location shown on this plat was plotted from field notes of actual surveys made by me or under my supervision and that the same is true and correct to the best of my belief.

JULY 1 2009

Date Surveyed \_\_\_\_\_  
Signature & Seal \_\_\_\_\_  
Professional Surveyor \_\_\_\_\_

W.O.

Certificate No. Gary L. Jones 7977

## BASIN SURVEYS

DISTRICT I  
1625 N. French Dr., Hobbs, NM 88240

DISTRICT II  
1301 W. Grand Avenue, Artesia, NM 88210

DISTRICT III  
1000 Rio Brazos Rd., Aztec, NM 87410

DISTRICT IV  
1220 St. Francis Dr., Santa Fe, NM 87505

State of New Mexico  
Energy, Minerals and Natural Resources Department

OIL CONSERVATION DIVISION  
1220 South St. Francis Dr.  
Santa Fe, New Mexico 87505

Form C-102  
Revised October 12, 2005

Submit to Appropriate District Office  
State Lease - 4 Copies  
Fee Lease - 3 Copies

☐ AMENDED REPORT

WELL LOCATION AND ACREAGE DEDICATION PLAT

API Number		Pool Code	Pool Name
Property Code	Property Name		Well Number
	POKER LAKE UNIT 293		1H
OGRID No.	Operator Name		Elevation
	BOPCO, L.P.		3343'

Surface Location

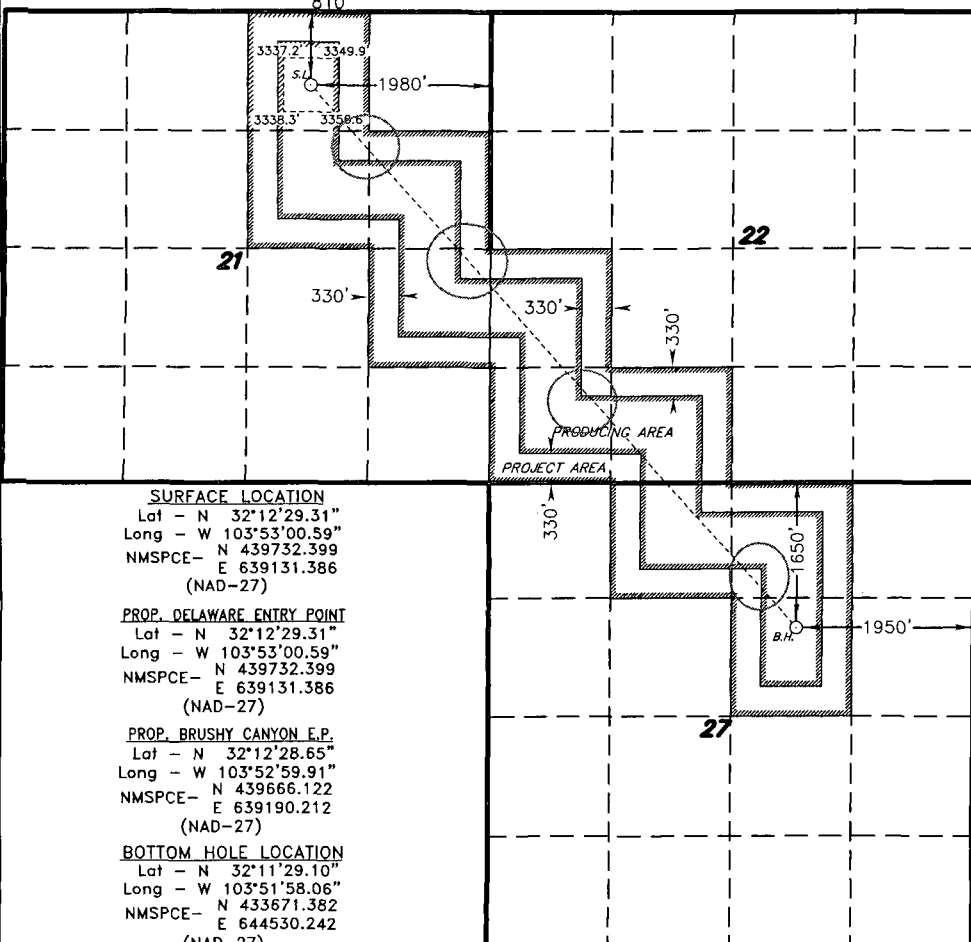
UL or lot No.	Section	Township	Range	Lot Idn	Feet from the	North/South line	Feet from the	East/West line	County
B	21	24 S	30 E		810	NORTH	1980	EAST	EDDY

Bottom Hole Location If Different From Surface

UL or lot No.	Section	Township	Range	Lot Idn	Feet from the	North/South line	Feet from the	East/West line	County
G	27	24 S	30 E		1650	NORTH	1950	EAST	EDDY

Dedicated Acres	Joint or Infill	Consolidation Code	Order No.

NO ALLOWABLE WILL BE ASSIGNED TO THIS COMPLETION UNTIL ALL INTERESTS HAVE BEEN CONSOLIDATED  
OR A NON-STANDARD UNIT HAS BEEN APPROVED BY THE DIVISION

 <p><b>SURFACE LOCATION</b> Lat - N 32°12'29.31" Long - W 103°53'00.59" NMSPCE- N 439732.399 E 639131.386 (NAD-27)</p> <p><b>PROP. DELAWARE ENTRY POINT</b> Lat - N 32°12'29.31" Long - W 103°53'00.59" NMSPCE- N 439732.399 E 639131.386 (NAD-27)</p> <p><b>PROP. BRUSHY CANYON E.P.</b> Lat - N 32°12'28.65" Long - W 103°52'59.91" NMSPCE- N 439666.122 E 639190.212 (NAD-27)</p> <p><b>BOTTOM HOLE LOCATION</b> Lat - N 32°11'29.10" Long - W 103°51'58.06" NMSPCE- N 433671.382 E 644530.242 (NAD-27)</p>		<p><b>OPERATOR CERTIFICATION</b></p> <p>I hereby certify that the information contained herein is true and complete to the best of my knowledge and belief, and that this organization either owns a working interest or unleased mineral interest in the land including the proposed bottom hole location pursuant to a contract with an owner of such a mineral or working interest, or to a voluntary pooling agreement or a compulsory pooling order heretofore entered by the division.</p> <p>Signature _____ Date _____</p> <p>Printed Name _____</p> <p><b>SURVEYOR CERTIFICATION</b></p> <p>I hereby certify that the well location shown on this plat was plotted from field notes of actual surveys made by me or under my supervision and that the same is true and correct to the best of my belief.</p> <p>Date Surveyed JULY 1, 2009</p> <p>Signature &amp; Seal of Gary L. Jones, Professional Surveyor</p> <p>Certificate No. Gary L. Jones 7977</p> <p>BASIN SURVEYS</p>
--	--	--