

RECEIVED MAY 24 2010
18

District I
1625 N. French Dr., Hobbs, NM 88240
District II
1301 W. Grand Avenue, Artesia, NM 88210
District III
1000 Rio Brazos Road, Aztec, NM 87410
District IV
1220 S. St. Francis Dr., Santa Fe, NM 87505

State of New Mexico
Energy Minerals and Natural Resources
Oil Conservation Division
1220 South St. Francis Dr.
Santa Fe, NM 87505

Form C-141
Revised October 10, 2003

Submit 2 Copies to appropriate
District Office in accordance
with Rule 116 on back
side of form

Release Notification and Corrective Action

n KML 1035743946

OPERATOR

Initial Report Final Report

Name of Company	COG OPERATING LLC 229137	Contact	Pat Ellis
Address	550 W. Texas, Suite 100, Midland, TX 79701	Telephone No.	432-230-0077
Facility Name	SENM SWD System (Northwest Central)	Facility Type	Tank Battery

Surface Owner	Federal	Mineral Owner		Lease No.	
---------------	---------	---------------	--	-----------	--

LOCATION OF RELEASE

Unit Letter	Section	Township	Range	Feet from the	North/South Line	Feet from the	East/West Line	County
N	17	17S	30E					Eddy

Latitude 32 49.840 Longitude 103 59.763

NATURE OF RELEASE

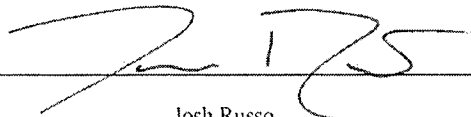
Type of Release	Produced Water	Volume of Release	300bbls	Volume Recovered	200bbls
Source of Release	6" produced water transmission line	Date and Hour of Occurrence	05/12/2010	Date and Hour of Discovery	05/12/2010 5:00 p.m.
Was Immediate Notice Given?	<input checked="" type="checkbox"/> Yes <input type="checkbox"/> No <input type="checkbox"/> Not Required	If YES, To Whom?	Mike Bratcher - OCD Terry Gregston - BLM		
By Whom?	Josh Russo	Date and Hour	05/13/2010 4:09 p.m.		
Was a Watercourse Reached?	<input type="checkbox"/> Yes <input checked="" type="checkbox"/> No	If YES, Volume Impacting the Watercourse.			

If a Watercourse was Impacted, Describe Fully.*

Describe Cause of Problem and Remedial Action Taken.*
The cause of the release was due to the failure of a poly weld on a 6" produced water transmission line. The line was immediately repaired and put back into service.

Describe Area Affected and Cleanup Action Taken.*
Initially 300bbls or produced water was released and we were able to recover 200bbls with a vacuum truck. The main area of the release on the pad location had the dimensions of 150'x130'. A stream then headed south on the pad location with the dimensions of 5'x100' before heading off the south end of the pad and into the pasture. The stream into the pasture went roughly 170'. (The closest well location to the release is the MCINTYRE DK FEDERAL #3, Unit N, 17-17S-30E, 660 FSL 1980 FWL, 32.82917 - 103.99629, API# 30-015-04186) Tetra Tech will sample the spill site area to delineate any possible contamination from the release and we will present a remediation work plan to the BLM / NMOCD for approval before any significant remediation.

I hereby certify that the information given above is true and complete to the best of my knowledge and understand that pursuant to NMOCD rules and regulations all operators are required to report and/or file certain release notifications and perform corrective actions for releases which may endanger public health or the environment. The acceptance of a C-141 report by the NMOCD marked as "Final Report" does not relieve the operator of liability should their operations have failed to adequately investigate and remediate contamination that pose a threat to ground water, surface water, human health or the environment. In addition, NMOCD acceptance of a C-141 report does not relieve the operator of responsibility for compliance with any other federal, state, or local laws and/or regulations.

Signature: 

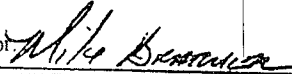
Printed Name: Josh Russo

Title: HSE Coordinator

E-mail Address: jrusso@conchoresources.com

Date: 05/21/2010 Phone: 432-212-2399

OIL CONSERVATION DIVISION

Approved by District Supervisor
Signed By: 

Approval Date: 3/3/11 Expiration Date:

Conditions of Approval: Attached

Remediation per OCD Rules & Guidelines. **SUBMIT REMEDIATION PROPOSAL NOT LATER THAN:**

* Attach Additional Sheets If Necessary

4/3/11 2 RP-536

Thanks,

Joshua Russo

HSE Coordinator
550 W. Texas Ave, Suite 100
Midland, Texas 79701
Phone: (432) 683-7443
Cell: (432) 212-2399
jrusso@conchoresources.com

CONFIDENTIALITY NOTICE: The information in this email may be confidential and/or privileged. If you are not the intended recipient or an authorized representative of the intended recipient, you are hereby notified that any review, dissemination or copying of this email and its attachments, if any, or the information contained herein, is prohibited. If you have received this email in error, please immediately notify the sender by return email and delete this email from your system. Thank you.

From: Rick Wright
Sent: Wednesday, May 12, 2010 10:24 PM
To: Pat Ellis; Joshua Russo
Cc: Kent Greenway; Keenan Kern; Ronnie Tice
Subject: Northwest Central Battery spill

On 5-12-10, at 5:00pm, a poly weld failed in a 6" produced water transmission line. The line was repaired and put back in service. Approximately 300 bbls were released and 200 bbls were recovered. The main puddle is 150ft X 130ft. A five foot stream then traveled about 100 yards south on the pad. Most of the fluid remained on the battery pad. Some fluid did run off the south end of the pad location about 50' into the pasture. The contaminated soil on the pad location will be scraped and removed. We will await further instructions. Legal description and GPS coordinates below.

SENM SWD SYSTEM (Northwest Central Battery)
Loco Hills Paddock
SE/4 SW/4
Sec.17-T17S-R30E
Eddy Co, New Mexico

N 32* 49.840'
W 103* 59.763'

Thanks,

Rick Wright
Production Foreman
COG Operating, LLC
2407 Pecos Ave.
Artesia, NM 88210
575.746.2010 office
432.528.5363 cell
575.746.2096 fax
rwright@conchoresources.com



Bratcher, Mike, EMNRD

From: Joshua Russo [jrusso@conchoresources.com]
Sent: Thursday, May 13, 2010 3:09 PM
To: Bratcher, Mike, EMNRD; terry_gregston@nm.blm.gov
Cc: Pat Ellis; Tavarez, Ike
Subject: SENM SWD SYSTEM (Northwest Central Battery) Immediate Notification

Please see below the description and location information of a release that we had yesterday at 5:00 p.m. at the SENM SWD SYSTEM (Northwest Central Battery). We will follow up with a sundry report (BLM), and within 15 days we will follow up with a C-141 Initial Report (BLM/OCD). If you have any questions or concerns please do not hesitate to contact me.

Thanks,

Joshua Russo

HSE Coordinator
550 W. Texas Ave, Suite 100
Midland, Texas 79701
Phone: (432) 683-7443
Cell: (432) 212-2399
jrusso@conchoresources.com



CONFIDENTIALITY NOTICE: The information in this email may be confidential and/or privileged. If you are not the intended recipient or an authorized representative of the intended recipient, you are hereby notified that any review, dissemination or copying of this email and its attachments, if any, or the information contained herein, is prohibited. If you have received this email in error, please immediately notify the sender by return email and delete this email from your system. Thank you.

From: Rick Wright
Sent: Wednesday, May 12, 2010 10:24 PM
To: Pat Ellis; Joshua Russo
Cc: Kent Greenway; Keenan Kern; Ronnie Tice
Subject: Northwest Central Battery spill

On 5-12-10, at 5:00pm, a poly weld failed in a 6" produced water transmission line. The line was repaired and put back in service. Approximately 300 bbls were released and 200 bbls were recovered. The main puddle is 150ft X 130ft. A five foot stream then traveled about 100 yards south on the pad. Most of the fluid remained on the battery pad. Some fluid did run off the south end of the pad location about 50' into the pasture. The contaminated soil on the pad location will be scraped and removed. We will await further instructions. Legal description and GPS coordinates below.

SENM SWD SYSTEM (Northwest Central Battery)
Loco Hills Paddock
SE/4 SW/4

Sec.17-T17S-R30E
Eddy Co, New Mexico

N 32* 49.840'
W 103* 59.763'

Thanks,

Rick Wright
Production Foreman
COG Operating, LLC
2407 Pecos Ave.
Artesia, NM 88210
575.746.2010 office
432.528.5363 cell
575.746.2096 fax
rwright@conchoresources.com



CONFIDENTIALITY NOTICE: The information in this email may be confidential and/or privileged. If you are not the intended recipient or an authorized representative of the intended recipient, you are hereby notified that any review, dissemination or copying of this email and its attachments, if any, or the information contained herein, is prohibited. If you have received this email in error, please immediately notify the sender by return email and delete this email from your system. Thank you.

Bratcher, Mike, EMNRD

From: Terry_Gregston@blm.gov
Sent: Monday, May 17, 2010 6:28 PM
To: Joshua Russo; Kgreenway@conchoresources.com
Cc: Tavaréz, Ike; Bratcher, Mike, EMNRD; pellis@conchoresources.com
Subject: NW Central TB spill: spill map, Arch clearance, other environmental issues on location
Attachments: NW Central TB-spill-051710.jpg

NW Central TB spill:

I have GPS'd the spill and consulted with archeology. All impacted areas fall within previously surveyed areas and ROWs; so COG is free to proceed with cleanup of both on-pad and off-pad spill impact areas. Previous estimates of spill extent out into pasture was underestimated; Pasture spill extends 171 feet from south corner of pad and runs downslope (spitj then west) along a buried pipeline ROW. There are multiple ROW crossings in the pasture area; it will take a lot of delicate digging to clean up that portion of the spill.

Also while on location found an older spill (indicated in brown on the attached map). The old spill portion to the east of the access road is the worst, having both hydrocarbons and probably salts. The portion of this older spill west of the access road is not as visibly impacted, but needs to be checked for contamination during cleanup operations on this location. I have tied this older spill to the McIntyre DK Federal #6 well for tracking purposes, but it also appears to have originated from the McIntyre DK Federal 6 tank battery or wellhead at some point in time. It is not a historic spill, but it is not a recent spill, either. (1+ years old) COG needs to address this spill in addition to the more recent spill on this location.

Also, the bird and bat netting on the large tank has holes in it. I spoke with onsite personnel, who told me that replacement netting was on order. The netting needs to be repaired ASAP. Please ensure that the netting is ordered and installed as soon as it comes in.

Terry Gregston
Environmental Protection Specialist
Bureau of Land Management
620 E. Greene St.
Carlsbad, NM 88220
Office (575) 234-5958
Fax (575) 234-5927

Joshua Russo <jrusso@conchoresources.com>

05/13/2010 03:09 PM

To "mike.bratcher@state.nm.us" <mike.bratcher@state.nm.us>, "terry_gregston@nm.blm.gov" <terry_gregston@nm.blm.gov>
cc Pat Ellis <PELLIS@conchoresources.com>, "Tavaréz, Ike" <Ike.Tavaréz@tetrattech.com>

Subject SENM SWD SYSTEM (Northwest Central Battery) Immediate Notification

Please see below the description and location information of a release that we had yesterday at 5:00 p.m. at the SEMN SWD SYSTEM (Northwest Central Battery). We will follow up with a sundry report (BLM), and within 15 days we will follow up with a C-141 Initial Report (BLM/OCD). If you have any questions or concerns please do not hesitate to contact me.

Spill-Saltwater 1.5083

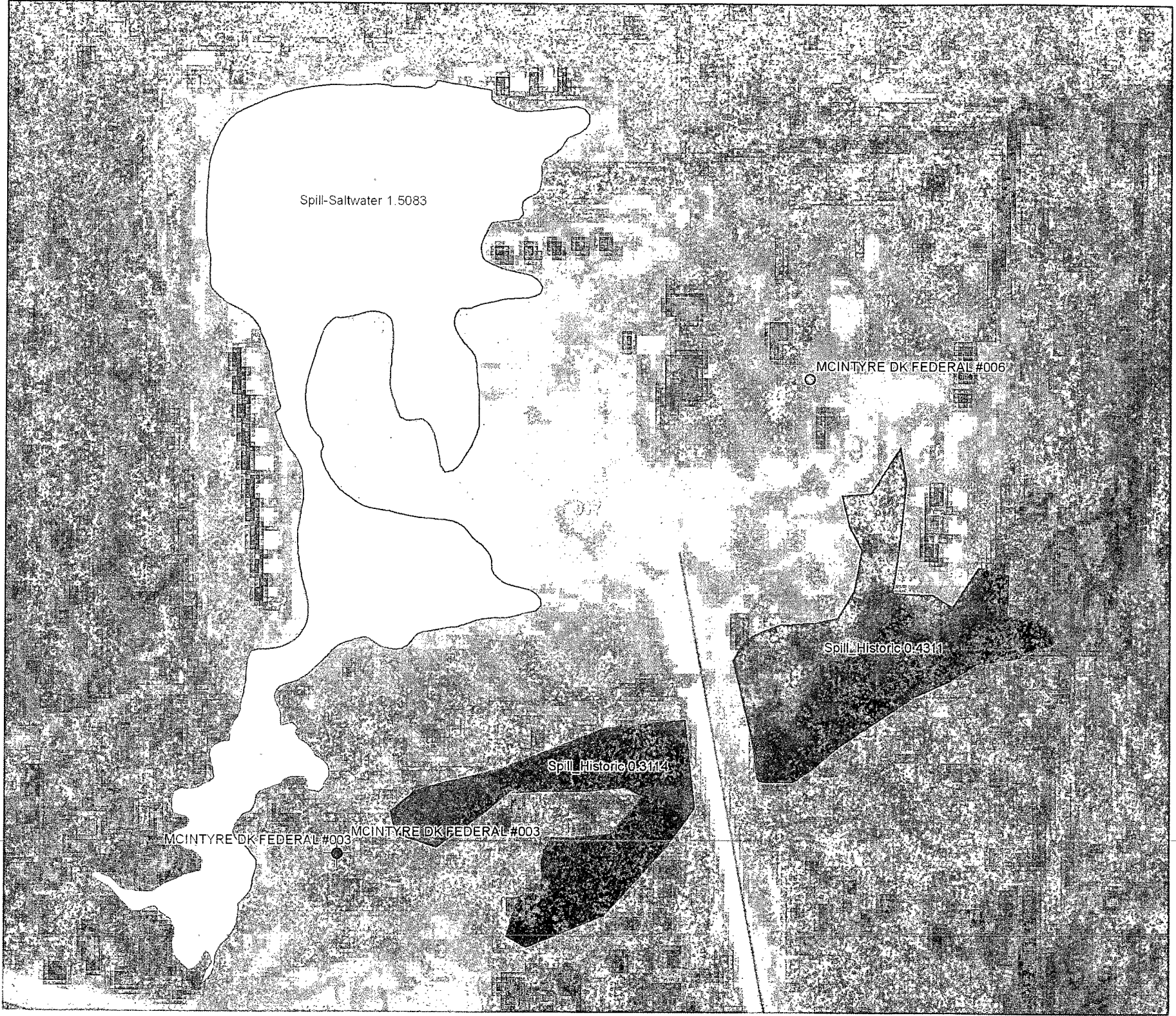
MCINTYRE DK FEDERAL #006

Spill_Historic 04314

Spill_Historic 03114

MCINTYRE DK FEDERAL #003

MCINTYRE DK FEDERAL #003



Bratcher, Mike, EMNRD

From: Joshua Russo [jrusso@conchoresources.com]
Sent: Monday, May 24, 2010 9:18 AM
To: Bratcher, Mike, EMNRD; terry_gregston@nm.blm.gov
Cc: Pat Ellis; Tavarez, Ike; james_amos@nm.blm.gov
Subject: C-141 INITIAL REPORT - SENM SWD SYSTEM (NORTHWEST CENTRAL)
Attachments: SENM SWD SYSTEM (NORTHWEST CENTRAL) -- DATE OF RELEASE 05-12-2010.PDF

Please find attached the C-141 Initial Report for the SENM SWD SYSTEM (Northwest Central). If you have any questions or comments please do not hesitate to contact me.

Thank you,

Joshua Russo

HSE Coordinator
550 W. Texas Ave, Suite 100
Midland, Texas 79701
Phone: (432) 683-7443
Cell: (432) 212-2399
jrusso@conchoresources.com



CONFIDENTIALITY NOTICE: The information in this email may be confidential and/or privileged. If you are not the intended recipient or an authorized representative of the intended recipient, you are hereby notified that any review, dissemination or copying of this email and its attachments, if any, or the information contained herein, is prohibited. If you have received this email in error, please immediately notify the sender by return email and delete this email from your system. Thank you.

Bratcher, Mike, EMNRD

From: Tavaréz, Ike [Ike.Tavaréz@tetrattech.com]
Sent: Monday, June 21, 2010 3:40 PM
To: Terry Gregston (terry_gregston@nm.blm.gov); Bratcher, Mike, EMNRD
Cc: Pat Ellis
Subject: COG - SEMM SWD and Big George Spill Assesment - Sampling Notification

COG Operating
SENM SWD System (North West Central)
Section 17, T17S, R30E, Unit N
Eddy County, New Mexico

COG Operating
Big George Line Leak
Section 8, T17S, R 29E
Eddy County, New Mexico

Terry,

Tentatively, Tetra Tech will be onsite Wednesday (6-23-10) to assess the spill area at the SENM SWD. We will be assessing a spill at the Big George Line leak (private land) on Tuesday (6-22-10) and should be finished by Wednesday. If we do not finish, I will call to rescheduled the SENM assessment on Thursday. Please call me if you have any questions, thanks

Ike Tavaréz, PG | Senior Project Manager

Main: 432.682.4559 | Fax: 432.682.3946 | Cell: 432.425.3878

Ike.Tavaréz@tetrattech.com

Tetra Tech | Complex World, Clear Solutions™

1910 North Big Spring | Midland, TX 79705 | www.tetrattech.com

PLEASE NOTE: This message, including any attachments, may include privileged, confidential and/or inside information. Any distribution or use of this communication by anyone other than the intended recipient is strictly prohibited and may be unlawful. If you are not the intended recipient, please notify the sender by replying to this message and then delete it from your system.

Bratcher, Mike, EMNRD

From: Tavarez, Ike [Ike.Tavarez@tetrattech.com]
Sent: Tuesday, August 17, 2010 9:11 AM
To: Terry Gregston (terry_gregston@nm.blm.gov); Bratcher, Mike, EMNRD
Cc: Pat Ellis
Subject: COG - Drilling Notifications

COG Operating

SENM SWD System (North West Central)
Section 17, T17S, R30E, Unit N
Eddy County, New Mexico
32.83047 103.99600

Red Lake Sand Tank Battery (State Land)
Section 29, T17S, R29E
Eddy County, New Mexico
32.81165 104.20295

Spruce Federal #1 Tank Battery
Section 25, T17S, R27E
Eddy County, New Mexico

Terry,

Tetra Tech will be onsite today at the SENM SWD System to install boreholes to define vertical extents of the chloride impact at the site. The drilling rig became available in short notice to assess the site. The drilling should take a couple of days to completed the assessment. Once completed, boreholes will be installed at the Red Lake Sand Tank Battery (State Land). The Spruce Federal will either be drilled on Friday or Monday next week. Once the drilling is completed, work plans will be prepared for review and approval. Please call me if you need additional information, thanks

Ike Tavarez, PG | Senior Project Manager

Main: 432.682.4559 | Fax: 432.682.3946 | Cell: 432.425.3878

Ike.Tavarez@tetrattech.com

Tetra Tech | Complex World. Clear Solutions™

1910 North Big Spring | Midland, TX 79705 | www.tetrattech.com

PLEASE NOTE: This message, including any attachments, may include privileged, confidential and/or inside information. Any distribution or use of this communication by anyone other than the intended recipient is strictly prohibited and may be unlawful. If you are not the intended recipient, please notify the sender by replying to this message and then delete it from your system.