

Bratcher, Mike, EMNRD

From: Terry_Gregston@blm.gov
Sent: Tuesday, May 18, 2010 6:56 PM
To: PEllis@conchoresources.com; James_Amos@blm.gov
Cc: Joshua Russo; Kent Greenway; Bratcher, Mike, EMNRD
Subject: Re: Berry A Federal #1
Attachments: IMG00003.jpg; IMG00005.jpg

Pat,

I have discussed this case with our lead engineer, Wesley Ingram. We'll send a PET out to look at it tomorrow. If you have any updates or changes on the well status, please let us know.

Terry Gregston
Environmental Protection Specialist
Bureau of Land Management
620 E. Greene St.
Carlsbad, NM 88220
Office (575) 234-5958
Fax (575) 234-5927

Pat Ellis <PEllis@conchoresources.com>

05/18/2010 04:15 PM

To "Mike Bratcher (mike.bratcher@state.nm.us)" <mike.bratcher@state.nm.us>, "Terry Gregston (terry_gregston@nm.blm.gov)" <terry_gregston@nm.blm.gov>

cc Joshua Russo <jrusso@conchoresources.com>, Kent Greenway <KGreenway@conchoresources.com>

Subject Berry A Federal #1

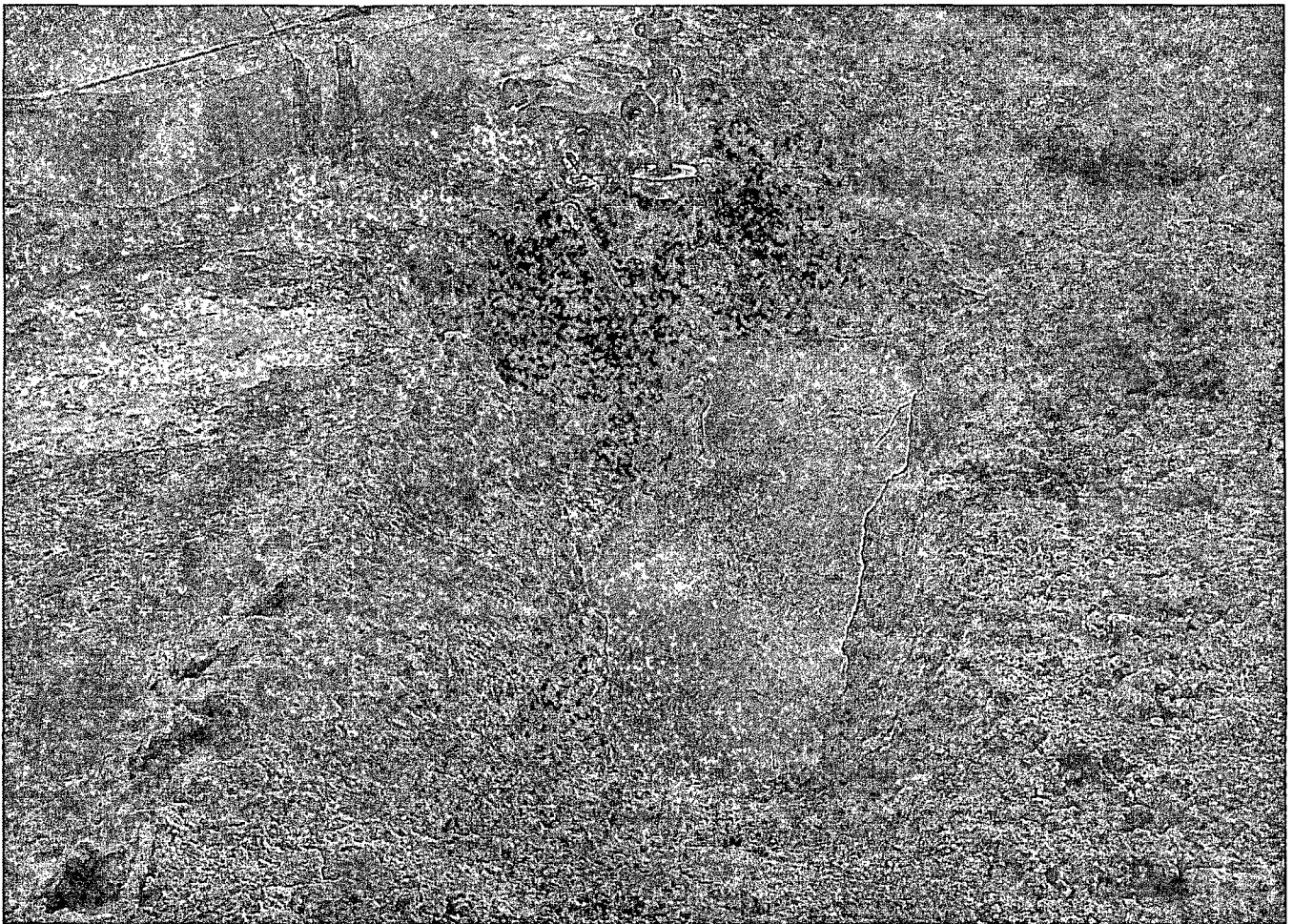
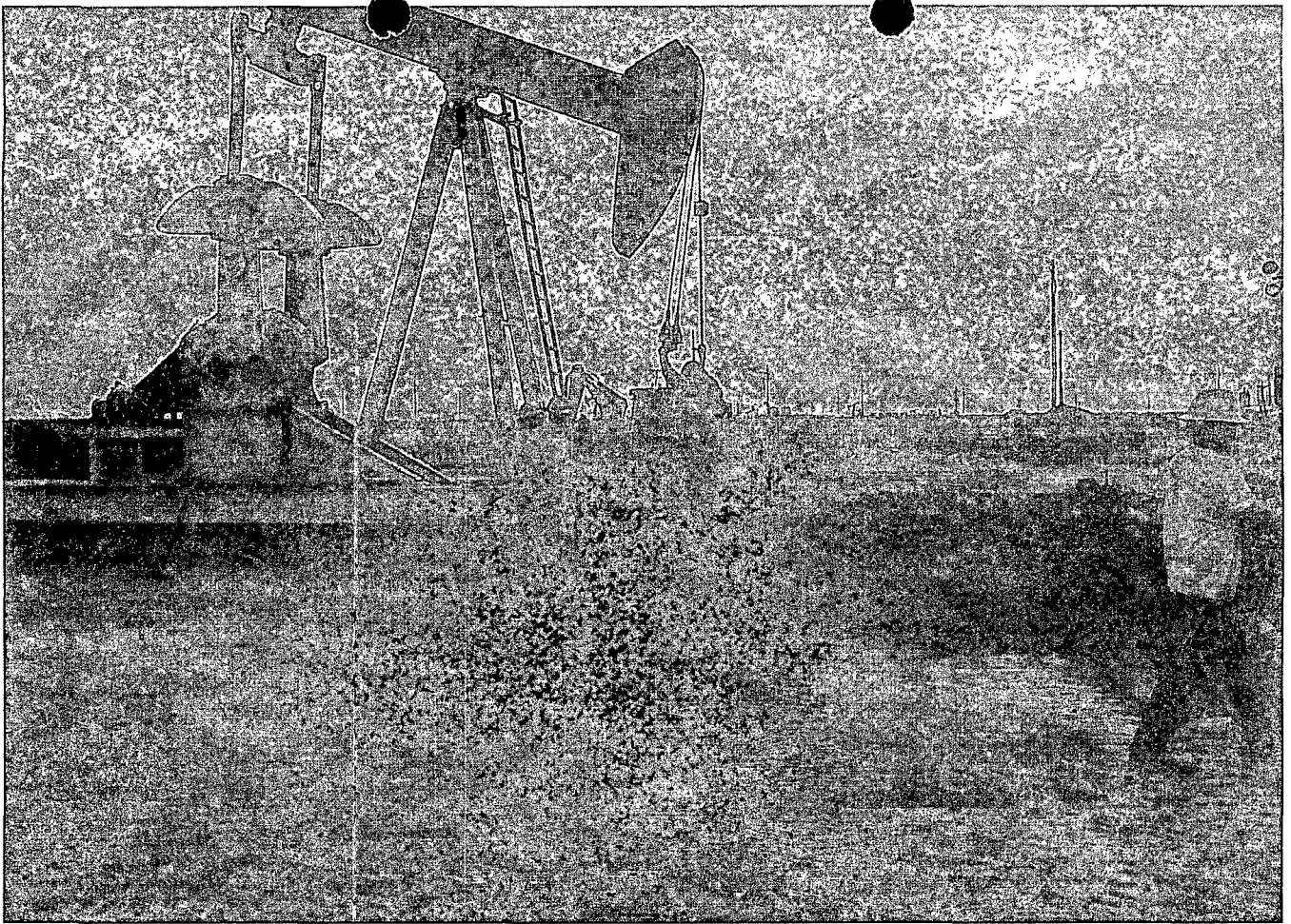
Mike, Terry,

I wanted to give an immediate notice of an active casing leak at our Berry A Federal #1 location. All fluid is contained in an area around the wellhead. We are picking up the fluid as it is released with a vacuum truck. We are in the process of utilizing a pulling unit to address the casing leak. Will communicate more information tomorrow. If you have further concerns or questions please give me a call.

Patrick Ellis
Manager HSE
COG OPERATING LLC
550 W. Texas Avenue, Suite 100
Midland, Texas 79701
Office 432.686.3023
Cell 432.230.0077
Fax 432.687.8008



CONFIDENTIALITY NOTICE: The information in this email may be confidential and/or privileged. If you are not the intended recipient or an authorized representative of the intended recipient, you are hereby notified that any review, dissemination or copying of this email and its attachments, if any, or the information contained herein, is prohibited. If you have received this email in error, please immediately notify the sender by return email and delete this email from your system. Thank you.



COG Barry A Fed #1

Rec'd from COG 5/18/10

Bratcher, Mike, EMNRD

From: Tavarez, Ike [Ike.Tavarez@tetrattech.com]
Sent: Monday, August 09, 2010 2:56 PM
To: Terry Gregston (terry_gregston@nm.blm.gov)
Cc: Bratcher, Mike, EMNRD; Pat Ellis; Reed, Timothy
Subject: COG - Sampling Notifications Eddy County, NM

COG - Beech Federal #2 Tank Battery
Section 25, T17S, R27E
Eddy County, New Mexico

COG - Berry A Federal #1 Well
Section 21, T17S, R30E
Eddy County, New Mexico

COG - East High Lonesome Tank Battery
Section 14, T16S, R39E Eddy County, New Mexico
Eddy County, NM

Terry,

Tetra Tech will be onsite to collect soil samples at the Beech Federal #2 Tank Battery on Tuesday (8-10-10). In addition, we will assess the Berry A Federal on Wednesday (8-11-10) and the East High Lonesome Tank Battery on Thursday (8-12-10). We will call you if we have delays or cancel due to weather. Based on the drilling assessment performed on the Spruce (1st spill), we will schedule the drilling rig to assess the 2nd spill. I will notify you when the rig is available, thanks

Ike Tavarez, PG | Senior Project Manager

Main: 432.682.4559 | Fax: 432.682.3946 | Cell: 432.425.3878

Ike.Tavarez@tetrattech.com

Tetra Tech | Complex World. Clear Solutions™

1910 North Big Spring | Midland, TX 79705 | www.tetrattech.com

PLEASE NOTE: This message, including any attachments, may include privileged, confidential and/or inside information. Any distribution or use of this communication by anyone other than the intended recipient is strictly prohibited and may be unlawful. If you are not the intended recipient, please notify the sender by replying to this message and then delete it from your system.

Bratcher, Mike, EMNRD

From: Dorey, Kim [Kim.Dorey@tetrattech.com]
Sent: Tuesday, October 12, 2010 2:28 PM
To: Joshua Russo; Bratcher, Mike, EMNRD; Pat Ellis (pellis@conchoresources.com); Tavaréz, Ike; Terry Gregston (Terry_Gregston@blm.gov)
Subject: Tetra Tech drilling notification - Berry A

Drilling (Soil Bores) Notification for COG Operating

Site Name: Berry A Federal #1
Operator: COG
Agent for operator: Tetra Tech
Onsite personnel: Kim Dorey
Location: Sec. 21 – T17S – R30E
County: Eddy County, NM
Surface Owner: Federal
GPS: 32.82643 -103.980206

Mike and Terry

Tetra Tech will be onsite Thursday October 14, 2010, to installed boreholes at the site. Tetra Tech has assessed the soil by installing hand augers and the data indicated some of the areas were not vertically defined (chlorides). The boreholes will be installed to defined these areas.

Estimated time to compete drilling: 1 day

Once completed, a work plan will be prepared and submitted to NMOCD for review and approval. Please call me if you have any questions, thanks

Kim Dorey | Staff Geologist
Cell: 432.631.0346 | Office: 432.682.4559 | Fax: 432.682.3946
kim.dorey@tetrattech.com

Tetra Tech
1910 North Big Spring | Midland, TX 79705 | www.tetrattech.com

PLEASE NOTE: This message, including any attachments, may include privileged, confidential and/or inside information. Any distribution or use of this communication by anyone other than the intended recipient is strictly prohibited and may be unlawful. If you are not the intended recipient, please notify the sender by replying to this message and then delete it from your system.

Bratcher, Mike, EMNRD

From: Tavarez, Ike [Ike.Tavarez@tetrattech.com]
Sent: Thursday, March 10, 2011 9:07 AM
To: Bratcher, Mike, EMNRD; Terry Gregston (terry_gregston@nm.blm.gov)
Cc: Pat Ellis; Joshua Russo; (jross@conchoresources.com); Titsworth, Johnny; Franklin, Tom K.; James_Amos@blm.gov
Subject: COG - Jenkins, Spruce, Berry A and Jr Horz - Soil Remediation Notification

COG Operating
Jenkins Federal B #12
Section 20, T17S, R30E
Eddy County, NM
32.821007 103.99520

COG Operating
Spruce Federal #1 Tank Battery
Section 25, T17S, R27E, Unit K
Eddy County, New Mexico
32.80240 103.23351
COG Operating
Berry A Federal #1 well
Section 21, T17S, R30E, Unit C
32.82643 103.980206

COG Operating
JR Horz Federal TB
Section 10, T26S, R29E, Unit D
32.06344 103.97959

Mike and Terry,

Tetra Tech has scheduled the soil remediation on the sites listed above. The Jenkins Federal B #12 is tentatively scheduled for Friday (3-11-11) and the remediation could take one day to complete. Prior to backfilling, we will notify to inspect of the excavations. The Spruce Federal #1 Tank Battery and the Berry A Federal #1 will start on Monday (3-14-11) and will also notify you during each phase of the remediation project. The JR Horz will be performed after the Berry A Federal is completed. We will call if the scheduled changes or call me if your in the area. Let me know if you need additional information, thanks

Ike Tavarez, PG | Senior Project Manager

Main: 432.682.4559 | Fax: 432.682.5946 | Cell: 432.425.3079

Ike.Tavarez@tetrattech.com

Tetra Tech | Complex World, Clear Solutions™

1910 North Big Spring | Midland, TX 79705 | www.tetrattech.com

PLEASE NOTE: This message, including any attachments, may include privileged, confidential and/or inside information. Any distribution or use of this communication by anyone other than the intended recipient is strictly prohibited and may be unlawful. If you are not the intended recipient, please notify the sender by replying to this message and then delete it from your system.