

ILLEGIBLE



TOM F. HILL
Manager, Southwest Division

CECIL A. COLVILLE
Assistant Division Manager

MAR 21 1966

PRODUCTION DEPARTMENT **SUN OIL COMPANY** SOUTHLAND CENTER, P.O. BOX 2880, DALLAS, TEXAS 75221

P. O. Box 2792
Odessa, Texas

March 21, 1966

Handwritten signature and notes

New Mexico Oil Conservation Commission
Hobbs, New Mexico

Dear Sir:

This letter is our application for exception to Rule 309A and permission to commingle our State of New Mexico "C" and State of New Mexico "I" leases. The leases are the NE $\frac{1}{4}$ and NW $\frac{1}{4}$ of Section 7, T-11S, R-24E, Lea County.

The leases are 100% Sun Oil Company leases and have the same state beneficiary, Common Schools of New Mexico. The leases are to be completed in the same reservoir, the Dough "C" in the Inbe-Penn Pool.

The method of commingling will depend upon the decision made by the State Land Commission. We will either meter one lease with our test facilities or use a production separator, dump meter and sampler.

Lease plats and diagrams of production and test facilities are attached.

Yours very truly,

SUN OIL COMPANY

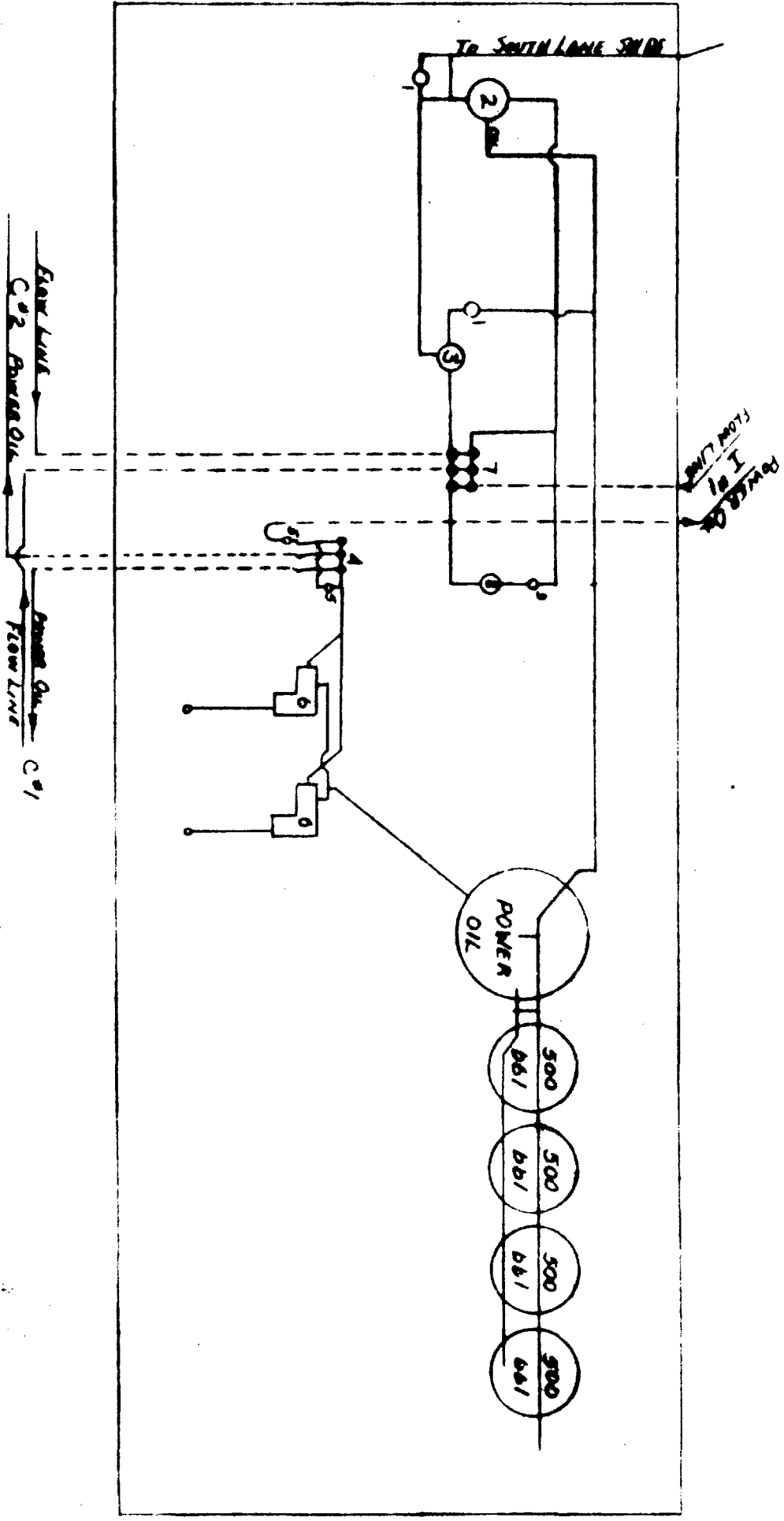
By:

C. L. Johnson

CLT/nc

cc: New Mexico Oil Conservation Commission
Hobbs, New Mexico

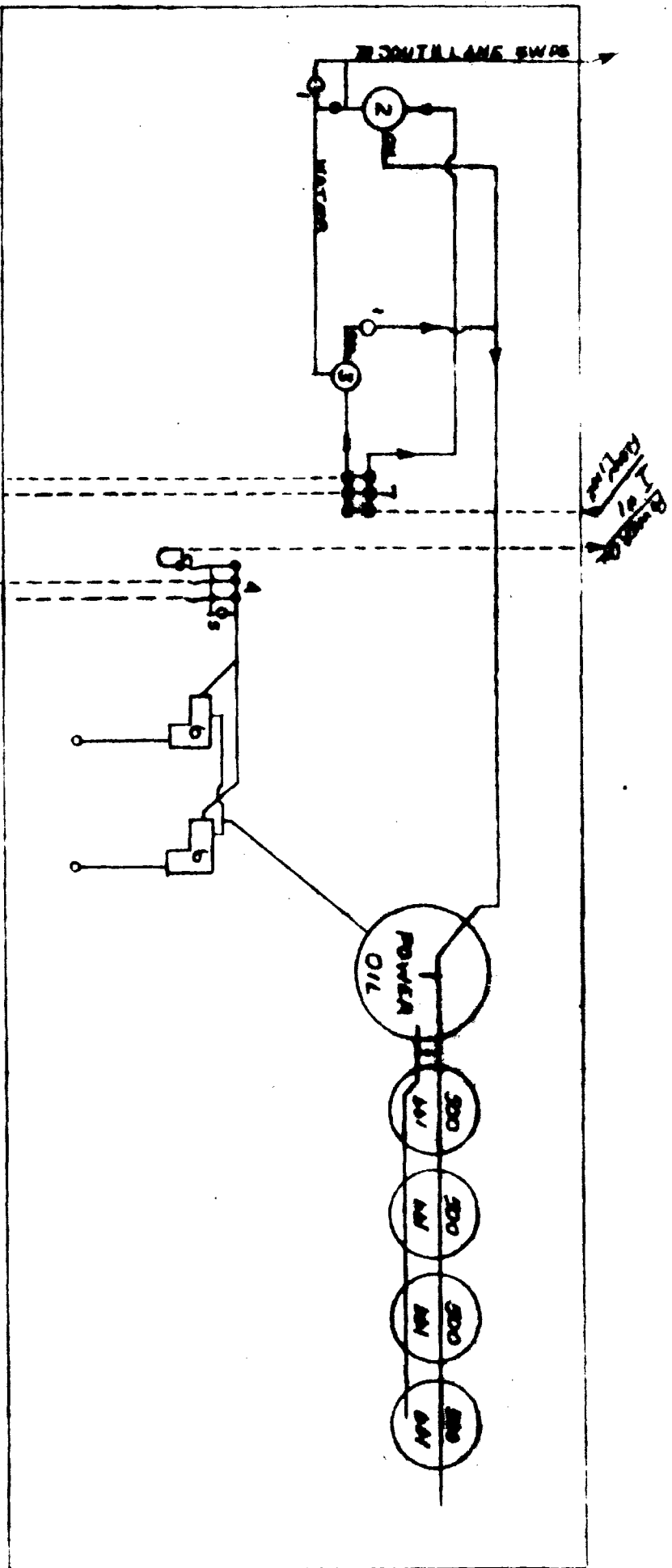
STATE OF NEW MEXICO "C AND I" USE
 COMMINGLED PRODUCTION USING A
 PRODUCTION SEPARATOR FOR "I" USE



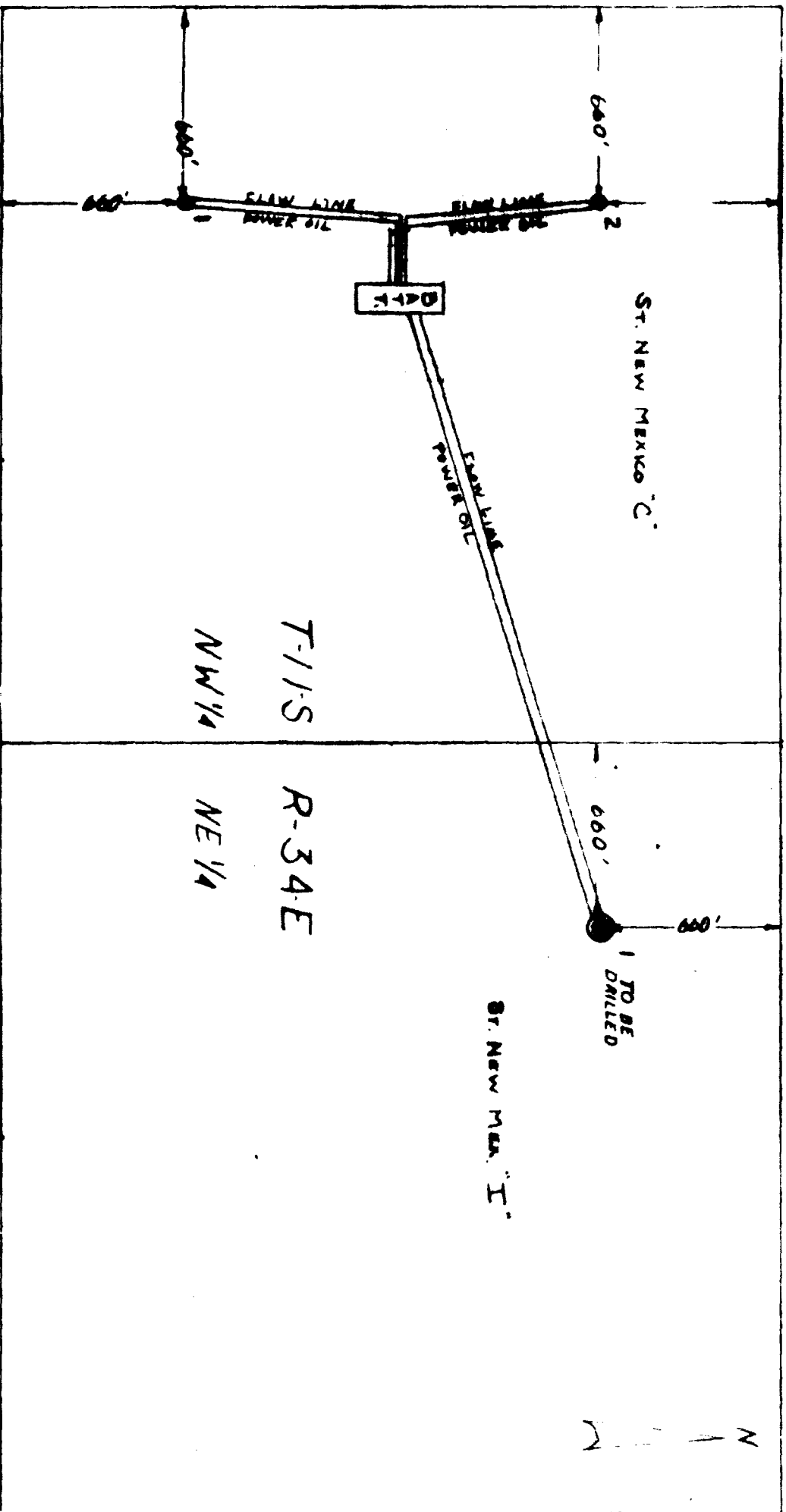
- 1 - SIVALLS M-30 1-bbl DUMP METER
- 2 - PRODUCTION HEATER-TREATER
- 3 - TEST HEATER-TREATER
- 4 - POWER OK MANIFOLD
- 5 - POWER OK METER

- 6 ROBE PUMP AND AJAX ENGINE
- 7 PRODUCTION MANIFOLD
- 8 PRODUCTION SEPARATOR
- 9 ROLO 14 bbl DUMP METER AND SAMPLER

STATE OF NEW MEXICO "C" AND "I" LEASE
 COMMINGLED PRODUCTION USING TEST
 FACILITIES FOR "I" LEASE



- 1 - SIVALLS M-30 1-6bl DUMP METER
- 2 - PRODUCTION HEATER-TREATER
- 3 - TEST HEATER-TREATER (FOR "I" USE PROD)
- 4 - POWER OIL MANIFOLD
- 5 - POWER OIL METER
- 6 KOBE PUMP AND AJAX ENGINE
- 7 PRODUCTION MANIFOLD



PROPOSED LEASE COMBINING
 LEA COUNTY, NEW MEX.

T-11-S
 R-34E
 NW 1/4
 NE 1/4

State of New Mexico

Section No. 102040

S. 171.04

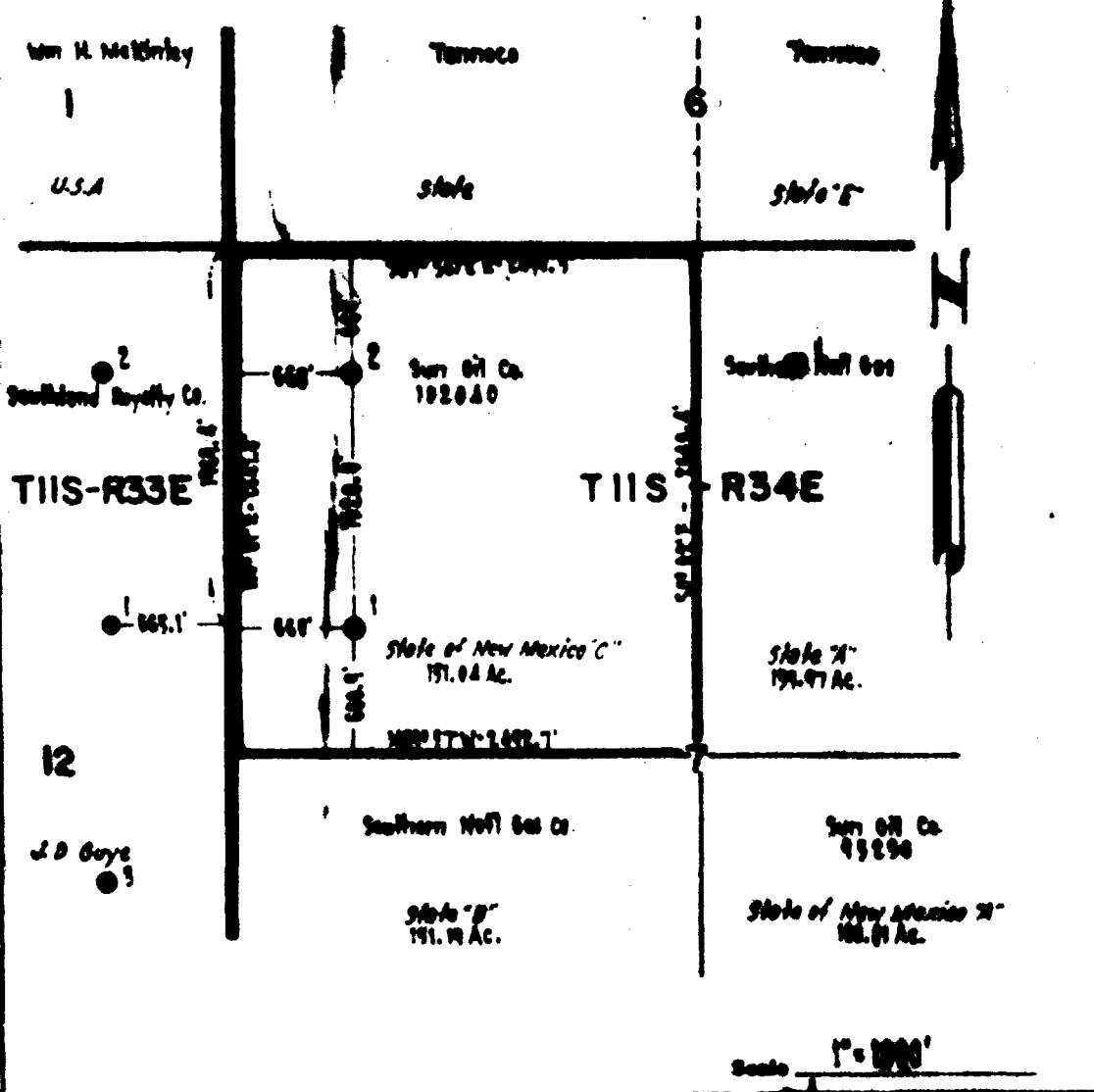
NW 1/4 Section 7 - T10S - R34E

John (Perry)

1000

1000

County, State New Mexico



State of New Mexico "I"

Lease No.

6-159.97

Acres

NE 1/4 Section 7 - T11S - R34 E

"Imbe - Penn"

Field

Lea

County, State

New Mexico

Tenneco

Tenneco

Tenneco

6

5

State F

State "E"

State

660.5

661.3

660.5 - S89° 55' 42" E - 2658.5

660'

660'

Sun Oil Co.
102040

Sun Oil Co.

N89° 57' W - 2640.2

S89° 57' E - 2640.0

T11S - R34 E

S1 of N.M.C.
151.04 Ac.

State of New Mexico "I"
159.97 Ac.

N89° 57' W - 2640.2

8

Southern Nat'l Gas

660.0

660.0

Sun Oil Co.
15230

State B
151.19 Ac.

State of New Mexico "A"

REMARKS:

Scale 1" = 1000'