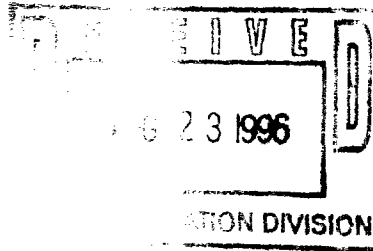


Amend C 15-430 7/12/96

AMERADA HESS CORPORATION

DRAWER D
MONUMENT, N.M. 88265
505 393-2144



August 19, 1996

Attn: Mr. David R. Catanach
State of New Mexico
Energy, Minerals & Natural Resources Department
Oil Conservation Division
2040 South Pacheco Street
Santa Fe, New Mexico 87505

Dear Mr. Catanach,

Amerada Hess Corporation respectfully request an Ammendment to Commingling Order CTB-430 reflecting the movement of Monument Abo Storage Facility from Unit F, Sec. 2, T20S, R36E, to Unit M, Sec. 35, T19S, R36E, Lea County, N.M. This move was facilitated due to the need for more storage capacity and a more centrally located facility.

The following wells produce to the new Monument Abo Storage Facility from the Abo Pool (46970) with production metered separately: \Monument Abo 35 Well No. 2, API #30-025-33045; \M. E. Gaither Well No. 5, API #30-025-33190; \M. E. Gaither Well No. 6, API #30-025-33191; Smith Well No. 8, API #30-025-33436; & Smith Well No. 9, API #30-025-33512. \Monument Abo Well No. 1, API #30-025-26886, and Reed A-3 Federal Well No. 16, API #30-025-33300, produce to tanks at well locations with oil trucked to and also sold from new Monument Abo Storage Facility. Reed A-3 Federal Well No. 16 is currently shut-in pending workover.

Amerada Hess Corporation is in process of completing forms requesting approval to surface commingle production from Smith Well No. 8 and Smith Well No. 9. Smith Well No. 9 is currently being completed with well anticipated to be connected to new Monument Abo Storage Facility later this week.

Attached is a Well Location and Storage Facility Schematic for your review.

If additional information is needed, please let us know at your earliest convenience.

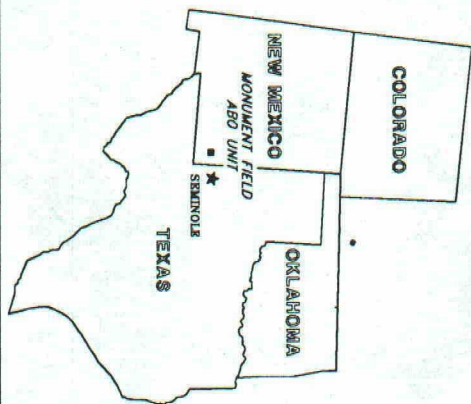
Sincerely,


Roy L. Wheeler, Jr.

xc: Mr. Jerry Sexton - NMOCD, Hobbs, N.M.

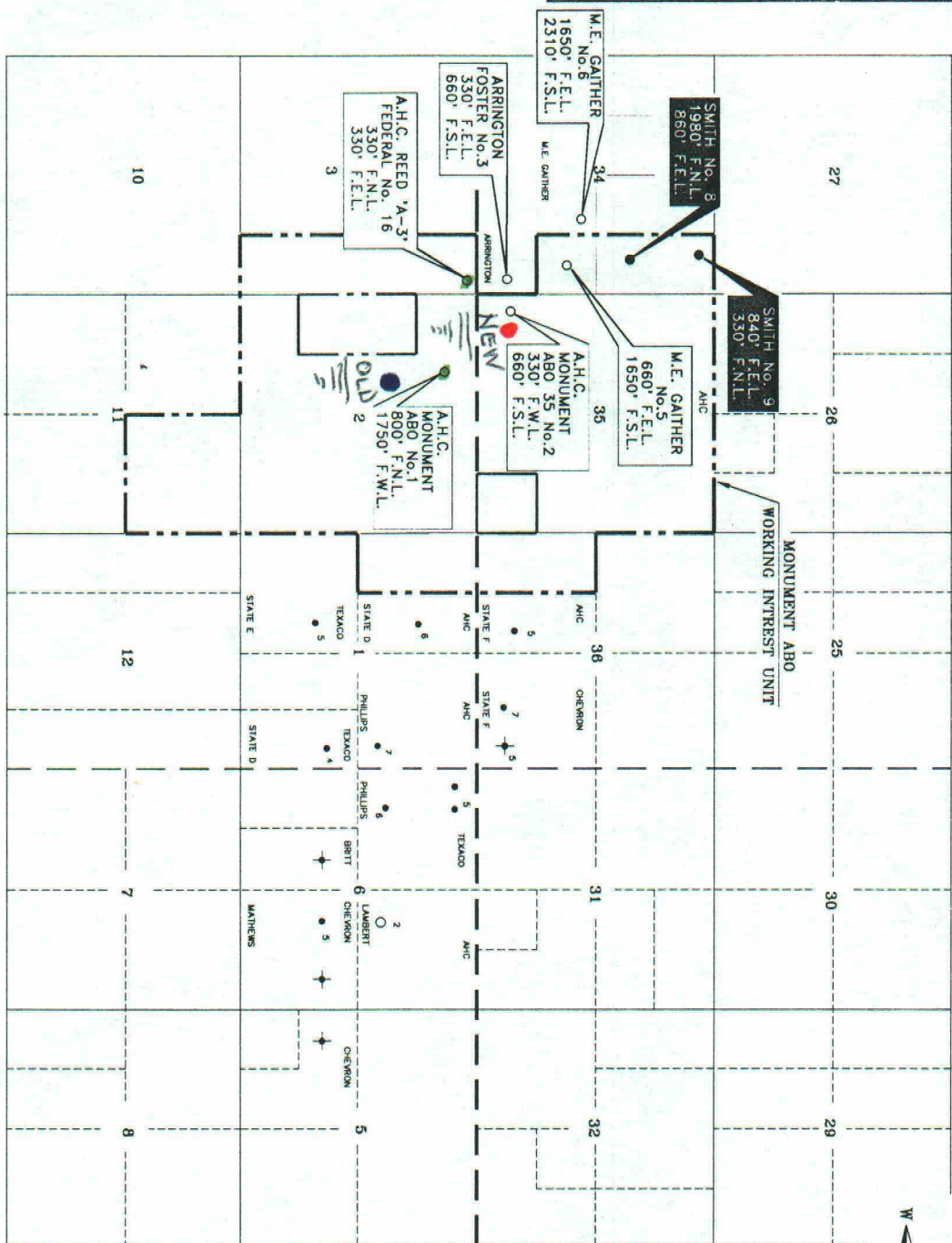
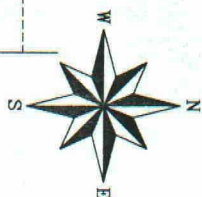
IT APPEARS TO ME THAT
COMINGLING IS ALREADY
ON CARTRIDGE CALL UP TO
SEE WHEN COMPLETED
POINT ABOUT FOSTER NO. 1
10-11-96

AMERADA HESS CORPORATION
SEMINOLE DISTRICT



R-36-E

R-37-E



T
20
S

T
19
S

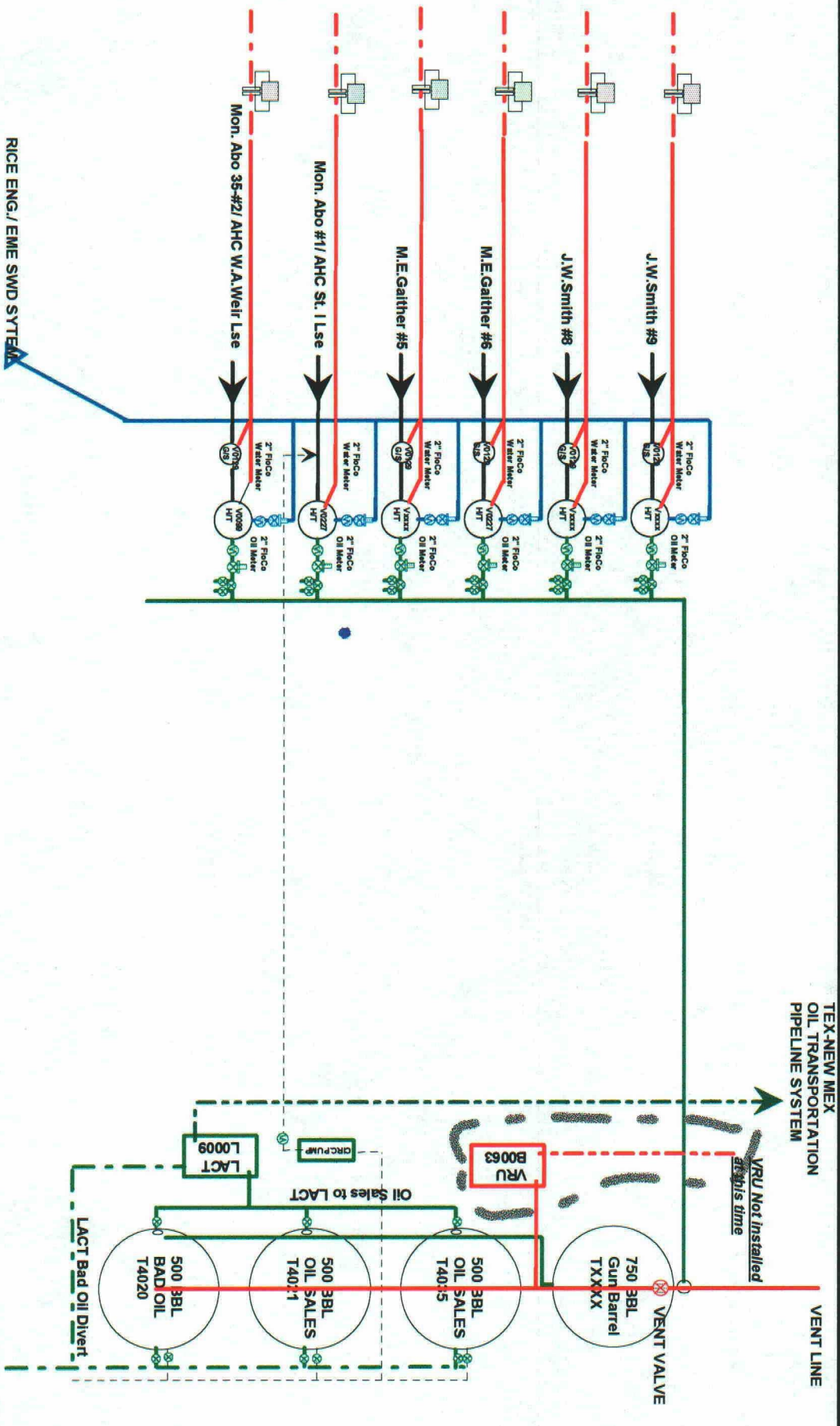
- OIL WELL
- TAD
- P & A
- ☀ GAS WELL
- ⚙ INJECTION WELL
- ⊗ SWD
- ⓧ TRACT OR UNIT No.
- ⓧ SATELLITE
- AHC
- MBO
- MMCF

Drawn By: S. Stanfield
Date: 11-22-1995
Scale: None
Checked By:
Engineer: J. Baker
Approved By:
P.E. No.
Drawing File: MONABO-1.DWG
Storage Media:



AMERADA HESS CORPORATION
SEMINOLE DISTRICT
MONUMENT ABO
LEA COUNTY, NEW MEXICO

Drawing No.
Last Revision Date: 5-3-1996
Rev. No.



LOCATION MAP



WELL INFORMATION

- OIL LINE
- WATER LINE
- GAS LINE
- REGULATORY LINE
- BATTERY FENCE
- DUMP VALVE
- VOLUME METER / FLO-CO

LEGEND

- WELL COUNT
- 2 PRODUCTION

LEASE INFORMATION



AMERADA HESS CORPORATION
MONUMENT ABO BATTERY

MONUMENT AREA
MONUMENT FIELD
LEA COUNTY, NEW MEXICO

ORIGINATOR: R. WILLIAMS

DATE: AUGUST 16, 1996
FILE: AB08TY96.DRW