

WFX - 51
Working on it
How fast

GRARIDGE CORPORATION

IBEX BUILDING

POST OFFICE BOX 752

BRECKENRIDGE, TEXAS

September 9, 1960

Oil Conservation Commission
State of New Mexico
State Capitol Building
Santa Fe, New Mexico

Re: Application of Administrative
Approval to Convert One Well
To Water Injection Well in
Artesia Flood No. 2
Eddy County, New Mexico

Gentlemen:

In accordance with Commission Order No. R-966-E, Graridge
respectively requests administrative approval to convert the following
well to a water injection well.

<u>LEASE</u>	<u>WELL NO.</u>	<u>LOCATION</u>
Lackawanna State	2	Unit G, Section 21, T18S, R28E

The following data pertinent to the proposed expansion are
given.

(1) The proposed injection well is directly offset by a
producing well which has shown response to the waterflood project.
See attached Form C-116 and Exhibit No. 1.

(2) Exhibit No. 1 indicates all offset operators and in-
jection wells in Artesia Flood No. 2. A copy of this application
and a waiver form is being sent to Western Yates as they are the
offset operator to the proposed expansion. This waiver will be
forwarded to you as soon as it is received.

(3) Exhibit No. 2 indicates present injection well data.
It is evident that some of the injection wells are not as receptive
to water injection as others, thus, it is desirable to place wells
on injection as early as responses warrant in order to maintain a
flood balance.

September 9, 1960

(4) Exhibit No. 3 gives performance curves for the overall waterflood project.

The subject well will be completed in the following manner after approval of our C-102 Form from the Commission.

The well now has 314' of 10" casing and 894' of 8-1/4" casing in it. We will clean out to a depth of 2169', run an electric log, run 4-1/2" casing to approximately 2100' and cement with 150 sacks of cement. Before placing the well on injection, a string of 2-3/8" cement lined tubing will be run with a tension packer set at a depth well below the cement outside the 4-1/2" casing. Injection will be down the tubing into open hole into the first Grayburg. ✓

Any consideration by the Commission in expediting this matter will be greatly appreciated.

Yours very truly,

GRARIDGE CORPORATION



B. G. Harrison

Manager of Secondary Recovery

SHL/BGH:vl

Attachments

cc: Oil Conservation Commission, Artesia
State Engineers Office, Santa Fe
Graham Office
Mr. Cliff Chapman
Mr. Paul Darnell

NEW MEXICO OIL CONSERVATION COMMISSION

GAS-OIL RATIO REPORT

OPERATOR Granridge Corporation POOL Artesia
ADDRESS Box 752, Breckenridge, Texas MONTH OF September, 19 60
SCHEDULED TEST _____ COMPLETION TEST _____ SPECIAL TEST X (Check One)
(See Instructions on Reverse Side)

Lease	Well No.	Date of Test	Producing Method	Choke Size	Test Hours	Daily Allowable Bbls.	Production During Test			GOR Cu. Ft. Per Bbl.
							Water Bbls.	Oil Bbls.	Gas MCF	
BEFORE WATERFLOOD RESPONSE										
Lackawanna State	4-A	7-10	Pump		24	2	0	2	TSTM	TSTM
AFTER WATERFLOOD RESPONSE										
Lackawanna State	4-A	9-2	Pump		24	2	0	9	TSTM	TSTM

No well will be assigned an allowable greater than the amount of oil produced on the official test.

During gas-oil ratio test, each well shall be produced at a rate not exceeding the top unit allowable for the pool in which well is located by more than 25 percent. Operator is encouraged to take advantage of this 25 percent tolerance in order that well can be assigned increased allowables when authorized by the Commission.

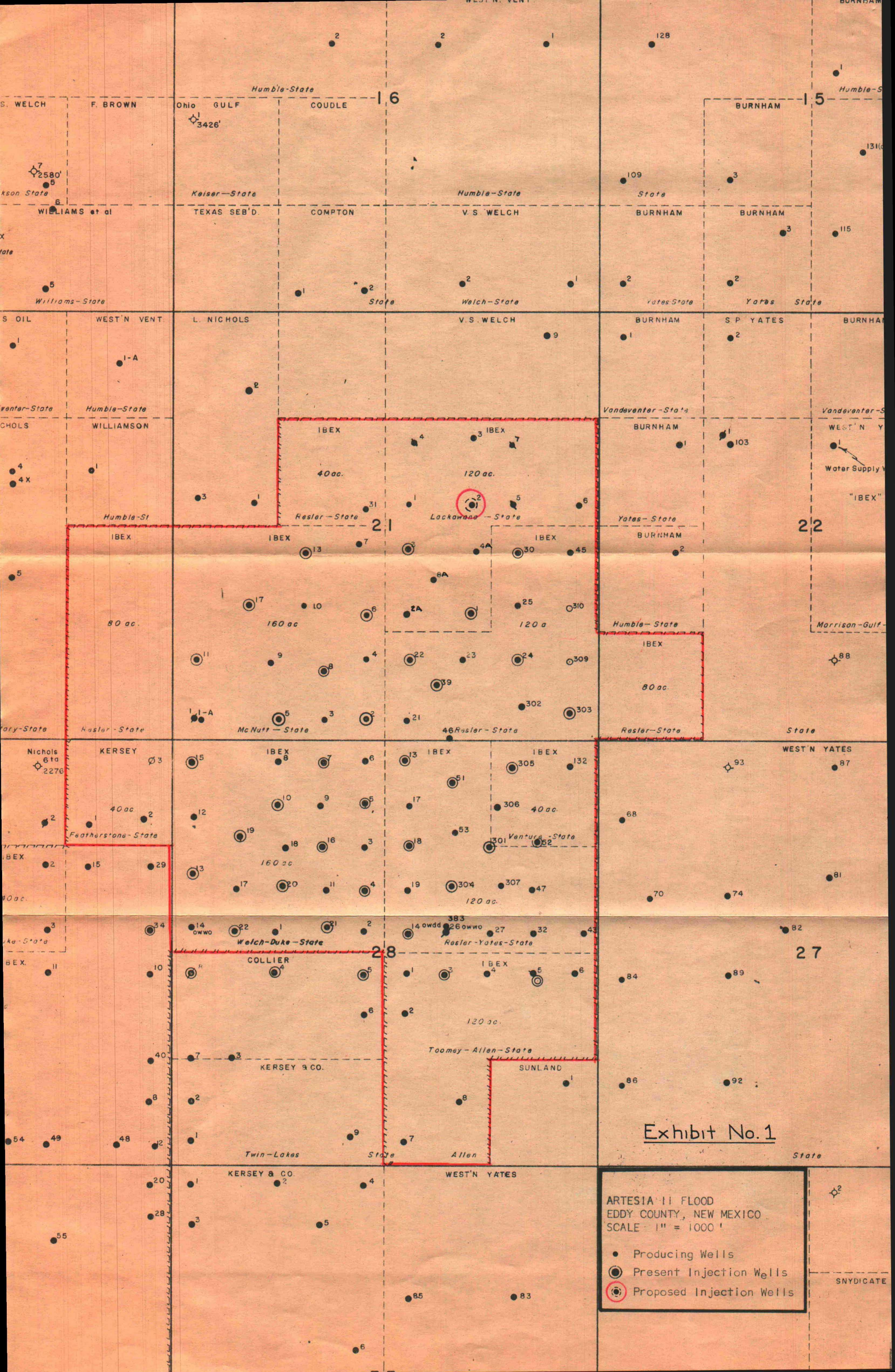
Gas volumes must be reported in MCF measured at a pressure base of 15.025 psia and a temperature of 60 degrees F. Specific gravity base will be 0.60.

Mail original and one copy of this report to the district office of the New Mexico Oil Conservation Commission. In accordance with Rule 301 and Appropriate Pool Rules.

(I certify that the information given is true and complete to the best of my knowledge.)

Date September 12, 1960

Granridge Corporation
Company
By S. H. Lindley, Jr.
S. H. Lindley, Jr.
Engineer
Title



GRARIDGE CORPORATION

MONTHLY WATER FLOOD REPORT

Page 11.

Injection Well Data

Project: Artesia Flood No. 2

Month: August, 1960

Lease & Well No.	Total Water Input		Injection Pressure	Cumulative Input
	Month	Avg./Day		
Toomey Allen 3	3,596	116	1000	12,318
Lackawanna 1	5,063	163	950	34,499
State "A" 3	4,099	132	995	44,744
McNutt 2	6,492	210	995	247,379
5	4,613	149	980	71,167
6	2,848	98	990	104,759
8	4,651	155	980	160,508
11	4,552	147	990	47,054
13	1,960	63	1000	22,169
17	5,236	175	995	46,218
Resler Yates 13	4,019	130	995	197,413
State 14	1,526	49	1000	16,352
18	3,444	111	1000	213,317
22	1,277	44	995	123,010
24	2,313	75	995	37,664
* 30	1,543	221	770	1,543
39	2,858	92	995	60,271
51	4,287	139	995	161,166
301	2,463	79	1000	74,316
303	3,608	116	995	13,458

G R A R I D G E C O R P O R A T I O N

MONTHLY WATER FLOOD REPORT

Page 11.

Injection Well Data

(2)

Project: Artesia Flood No. 2

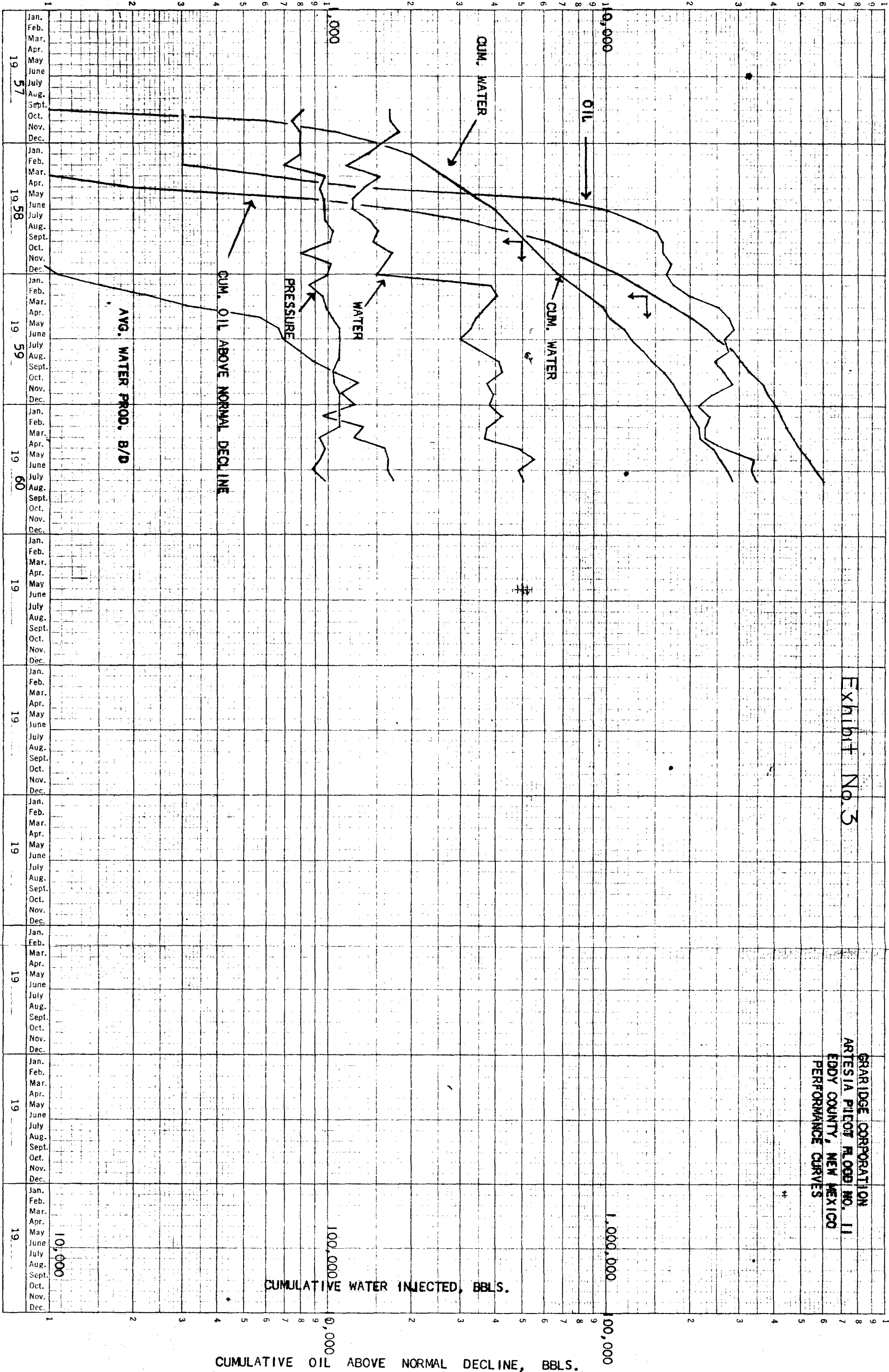
Month: August, 1960

Lease & Well No.	Total Water Input		Injection Pressure	Cumulative Input
	Month	Avg./Day		
Resler Yates State 304	4,085	132	990	45,225
Ventures State 52	5,420	175	1005	40,447
305	317	10	990	49,249
Welch Duke State 4	2,461	79	980	102,093
5	5,518	178	965	236,192
7	6,657	215	950	274,314
10	5,127	171	930	121,075
13	3,508	113	975	34,915
15	6,510	210	990	81,069
16	6,566	212	850	108,844
19	3,841	124	995	49,766
20	5,885	190	955	56,284
21	386	13	990	49,648
22	7,651	247	950	43,446
TOTALS (34)	134,380	4,533	975 (avg)	2,981,892
* Resler Yates State #30 put on Injection August 24, 1960				

INJECTION PRESSURE, PSIG.

WATER INJECTION, BBLs/DAY
AVG. WATER PROD. BBLs/DAY

OIL PRODUCTION, BBLs/MO.





OFFICE DEC

13
1960 SEP 21 STATE OF NEW MEXICO

STATE ENGINEER OFFICE
SANTA FE

S. E. REYNOLDS
STATE ENGINEER

September 21, 1960

ADDRESS CORRESPONDENCE TO:
P. O. BOX 1079
SANTA FE, N. M.

Mr. A. L. Porter, Jr.
Secretary-Director
Oil Conservation Commission
Santa Fe, New Mexico

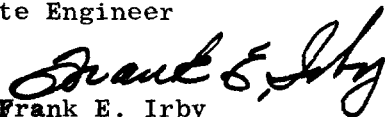
Dear Mr. Porter:

Reference is made to the application of the Graridge Corporation dated September 9, 1960 which seeks administrative approval to convert one well to water injection well in Artesia Flood No. 2. The specific well is designated as Lackawanna State No. 2, Unit G, Section 21, Township 18 South, Range 28 East.

In view of the statement that injection will be through 2 3/8" cement lined tubing with tension packer set at a depth well below the top of cement outside the 4 1/2" casing, it appears there will be no threat of contamination to the fresh waters which may exist in the area. Therefore, this office offers no objection to the granting of this application.

Very truly yours,

S. E. Reynolds
State Engineer

By: 
Frank E. Irby
Chief
Water Rights Division

FEI/ma
cc-F. H. Hennighausen
Gradige Corp.