



STATE OF NEW MEXICO  
ENERGY AND MINERALS DEPARTMENT  
OIL CONSERVATION DIVISION

BRUCE KING  
GOVERNOR

LARRY KEHOE  
SECRETARY

POST OFFICE BOX 2088  
STATE LAND OFFICE BUILDING  
SANTA FE, NEW MEXICO 87501  
(505) 827-2434

August 6, 1980

Energy Reserves Group  
P. O. Box 3280  
Casper, Wyoming 82602

Re: Injection Pressures  
Gallegos Canyon Unit  
Wells Nos. 306 and 307  
SWD-225

Gentlemen:

After reviewing the instantaneous shut down pressures for the above mentioned wells, you are hereby authorized to inject salt water at a surface injection pressure not to exceed 1000 psig.

Yours very truly,

JOE D. RAMEY  
Director

JDR/MH/fd

Energy Reserves Group, Inc.  
P.O. Box 3280  
Casper, Wyoming 82602  
Phone 307 265 7331



July 31, 1980

Oil Conservation Commission  
State of New Mexico  
P.O. Box 2088  
Santa Fe, New Mexico 87501

Subject: Request to increase injection pressure on Gallegos Canyon Unit #306 and #307 from 600 psi to 1000 psi.

Gentlemen:

Administrative Order No. SWD-225 authorizes the injection of Salt Water into Gallegos Canyon Unit #306 and #307, with a limit of 600 pounds per square inch surface pressure. This limit will not allow sufficient rate for our purposes. It is requested that the 600 pounds per square inch limit be increased to 1000 pounds per square inch surface pressure in light of the following data:

Gallegos Canyon Unit #306.

Acid Treatment - perfs 3,022'-3,190' - ISDP 1250 psi  
Acid Treatment - perfs 3,306'-3,368' - ISDP 1200 psi  
Acid Treatment - perfs 3,520'-3,600' - ISDP 1300 psi

Gallegos Canyon Unit #307.

Acid Treatment - perfs 2,952'-3,014' - ISDP 1350 psi  
Acid Treatment - perfs 3,188'-3,280' - ISDP 1200 psi  
Acid Treatment - perfs 3,372'-3,500' - ISDP 1200 psi  
Frac Treatment - entire zone - ISDP 1400 psi

Since the instantaneous shutdown pressure is a reflection of formation fracture pressure, and the lowest ISDP was 1200 psi. I feel that 1000 psi is still well below the formation fracture pressure.

Very truly yours,  
ENERGY RESERVES GROUP, INC.

R.E. Schanaman  
Production Engineer  
Rocky Mountain District

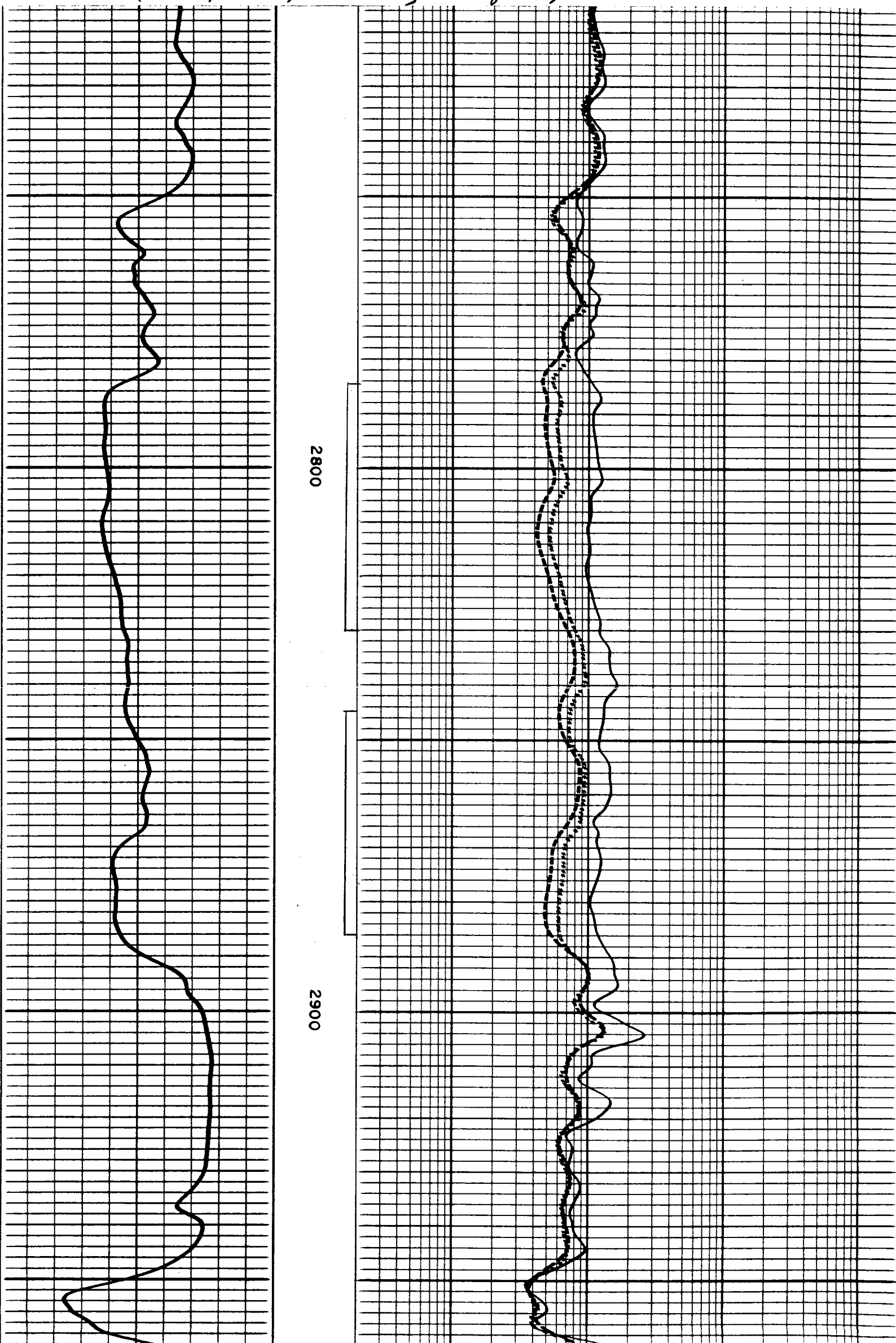
RES:erl

Gallegos Canyon Unit # 307

Sec 30-T29N-R12W

San Juan County, New Mexico

Proposed Perfs - 2785' - 2830'; 2845' - 2886' w/2 JSPF  
(174 perfs, 86' net, 101' gross)





September 1, 1980



**Amoco Production Company**

Denver Region  
Amoco Building  
17th & Broadway  
Denver, Colorado 80202  
303-830-4040

Joe D. Ramey, Director  
New Mexico Energy and Minerals Department  
Oil Conservation Division  
P. O. Box 2088  
Santa Fe, NM 87501

File: HAS-267-986.511

Dear Mr. Ramey:

Dual Completion, Gallegos Canyon Unit Well No. 306 as  
Fruitland Producer and Mesaverde Injector,  
San Juan County, New Mexico

Amoco, as an affected offset operator, has no objection to Energy Reserves Group's proposal submitted to us by letter of August 19, 1980, to dually complete the Gallegos Canyon Unit Well No. 306 in Unit I of Section 19-T29N-R12W as a Fruitland producer and Mesaverde injector (produced water disposal well).

Very truly yours,

R. B. Giles

RBG:dmh

cc: Ron E. Schanaman  
Energy Reserves Group, Inc.  
P. O. Box 3280  
Casper, WY 82602

AEW816