

February 3, 1988

New Mexico Oil Conservation Division
1000 Rio Brazos Rd.
Aztec, NM 87410

ATTN: Ernie Busch

RE: OFF-LEASE MEASUREMENT
JEROME P. MCHUGH'S Rainbow Seeker #1

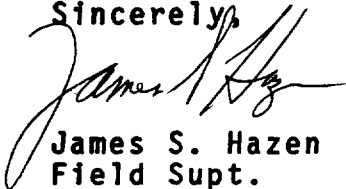
Gentlemen:

Jerome P. McHugh's Rainbow Seeker #1 well, located in SW NE of Sec. 29, T31N, R13W, is tied into El Paso Natural Gas Company's system via McHugh's pipeline.

The actual physical location of the El Paso meter is in NW SE of Sec. 29, T31N, R13W - thus off lease. (Map attached.) This meter measures only the gas production from this one well and is being reported as such. El Paso's contract required that we deliver to this point.

Please let us know if additional action needs to be taken.

Sincerely,

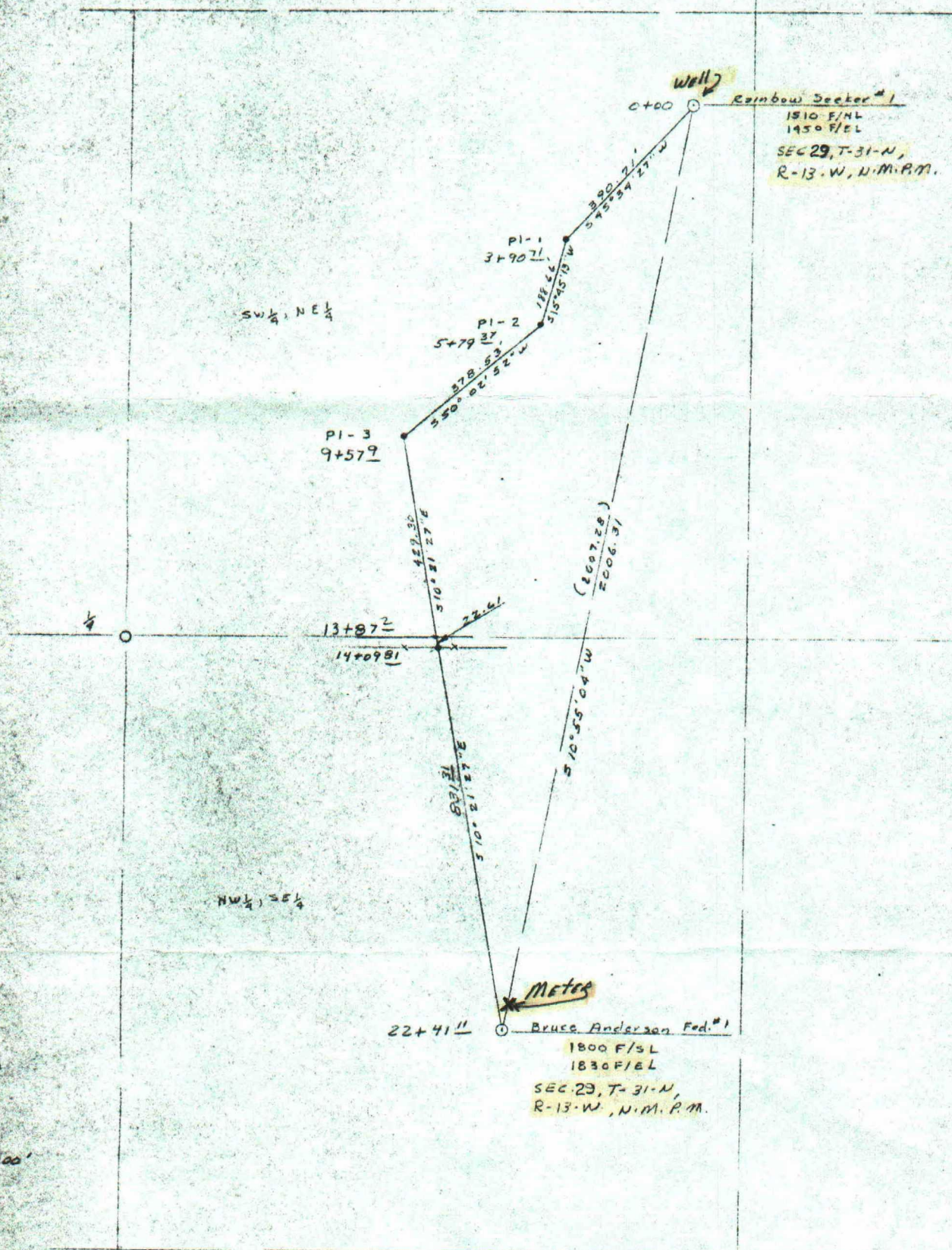


James S. Hazen
Field Supt.

JSH:fp

Attachment

RECEIVED
FEB 04 1988
OIL CON. DIV.
DIST. 3



1" = 300'