

0133936966

PC

N/R



November 28, 2001

Mr. David Catarach
New Mexico Oil Conservation Division
2040 South Pacheco Street
Santa Fe, New Mexico 87505

RE: Administrative Approval to Surface Commingle
Schwerdtfeger A LS #5, #13 & #20
Sec 8, T-27-N R-8-W
San Juan County, New Mexico

Dear Mr. Catanach,

XTO Energy, Inc. (XTO) requests administrative approval to surface commingle the Schwerdtfeger A LS #5, #13 & #20. All gas would be surfaced commingled through a single existing wellhead compressor. Each well's oil and water production will be kept separate and not commingled.

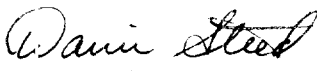
Utilizing a single wellhead compressor will help all three wells overcome sales line pressure and thereby maximize each well's productivity. The lower operating costs resulting from shared compression will extend the economic life of all wells thus increasing their ultimate recoveries.

The following are enclosed for your review of the proposed surface commingling amendment.

1. Well information table.
2. Gas production allocation formula sheet.
3. Battery schematic of proposed installation.
4. Well location plat.

If you need additional information or have any questions, please give me a call at (505) 324-1090.

Sincerely,
XTO ENERGY, INC


Derrin L. Steed
Operations Engineer

Enclosures

Cc: Gary Markestad
Well File
DLS File

C:\Work\Surface Commingles\Schwerdtfeger A LS #5, #13 & #20.doc

Schwerdtfeger A LS #5, #13 & #20

Well Information

	Schwerdtfeger A LS #5	Schwerdtfeger A LS #13	Schwerdtfeger A LS #20
Location	Sec 8G, T27N R8W	Sec 8B, T27N R8W	Sec 8G, T27N, R8W
Formation	Pictured Cliffs	Mesaverde	Dakota
API #	30-045-06677	30-045-06705	30-045-06669
Pool Name	Blanco	Blanco	Basin
Pool Code	72359	72319	71599
Gas Gravity	.635	.812	.756
Gas Rate (MCFD)	0	75	151
Oil Gravity	NA	55	58
Oil Rate (BPD)	0	1.0	0.3
Water Rate (BPD)	0	0.1	0

UE14

E/2

E/2

Gas Allocation Formula

The El Paso Field Services (EPFS) meter and meter runs will remain in place. Gas volumes for the Schwerdtfeger A LS #13 will be determined by the following formula:

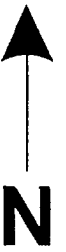
$$\text{Schwerdtfeger A LS \#13 Production} = \text{Meter \#72138} - \text{Meter \#71176} - \text{Meter \#73171} \\ + \text{Allocated compressor fuel gas}$$

The compressor's fuel gas will be allocated equally all three wells. The fuel gas usage is estimated to be 9 MCFD for the compressor.

No commingling of oil or water will occur. Production and sales will be based on actual measured volumes from each well.

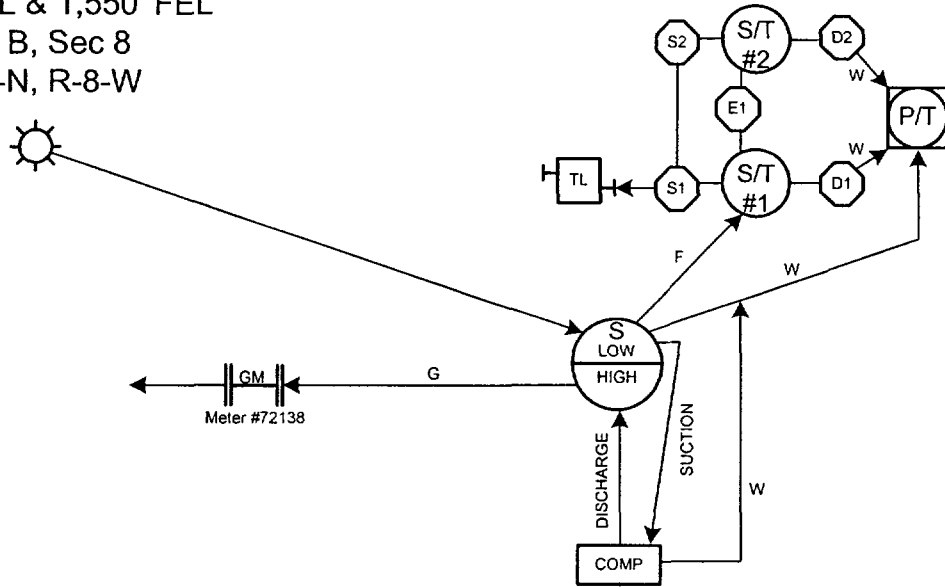
XTO ENERGY

Site Diagram for the Schwerdtfeger A LS #5, #13 & #20 Proposed Surface Commingling



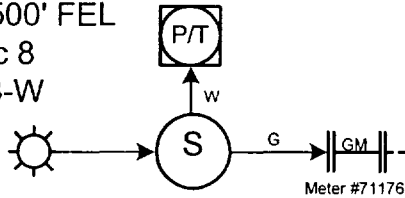
Schwerdtfeger A LS #13

1,090' FNL & 1,550' FEL
Unit B, Sec 8
T-27-N, R-8-W



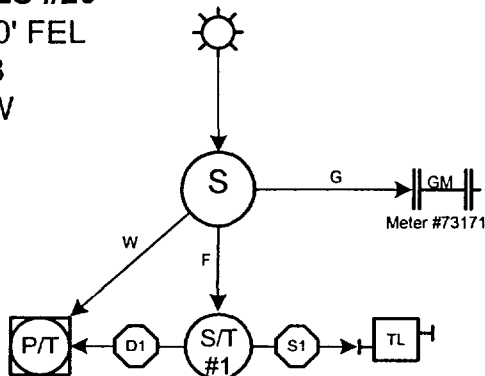
Schwerdtfeger A LS #5

1,750' FNL & 1,500' FEL
Unit G, Sec 8
T-27-N, R-8-W



Schwerdtfeger A LS #20

2,080' FNL & 1,900' FEL
Unit G, Sec 8
T-27-N, R-8-W



CTOC SCHWERDTFEGER A 8E
CTOC SCHWERDTFEGER A LS 4
PCCF
CTOC SCHWERDTFEGER A LS 11
PCCF/MVRD
CTOC SCHWERDTFEGER A 6M
MVRD/DKOT

BURLINGTON FILAN 3Y
PCCF
BURLINGTON FILAN 8
BURLINGTON FILAN 4
FRLOC
MVRD BURLINGTON FILAN 1
BURLINGTON FILAN 6
DKOT
PCCF
BURLINGTON FILAN 9
BURLINGTON FILAN 2
FRLOC
BURLINGTON FILAN 5
MVRD/DKOT
BURLINGTON FILAN 7
PCCF

CTOC DAWSON A 1M
MVRD/DKOT
CONOCO GRAHAM B WN FED 7
PCCF
M & G DRLG GRAHAM 1
GRAHAM 32
MVRD PCCF
M & G DRLG GRAHAM 98
FRLOC
M & G DRLG GRAHAM 32
PCCF
M & G DRLG GRAHAM 1A
MVRD/CHCR

BLEDSCO PET FED M 2
R & G DRLG GRAHAM 34
M & G DRLG GRAHAM
CHCR
BLEDSCO PET FED M 1A
MVRD
CONOCO GRAHAM B WN FED 8
PCCF
BLEDSCO PET FED M 3
CHCR
BAYLESS RL GRAHAM B WN FED 8
FRLOC
BLEDSCO PET FED M 1
DKOT/MVRD
CONOCO GRAHAM B WN FED 6
PCCF
M & G DRLG GRAHAM 3
MVRD/CHCR
M & G DRLG GRAHAM 3
PCCF

BURLINGTON DAY B 6
UNOCAL DAY B 3
DKOT
BURLINGTON DAY B 1
PCCF
BURLINGTON DAY B 7
PCCF

EL PASO NAT GAS SCHWERDTFEGER A 8
PCCF
CTOC SCHWERDTFEGER A 6M
MVRD/DKOT
CTOC SCHWERDTFEGER A LS 13
MVRD/DKOT
SCHWERDTFEGER A LS 8
CTOC SCHWERDTFEGER A LS 20
DKOT
CTOC SCHWERDTFEGER A LS 20M
MVRD/DKOT
CTOC SCHWERDTFEGER A LS 14
PCCF/MVRD
CTOC SCHWERDTFEGER A 8
DKOT
CTOC SCHWERDTFEGER A LS 23
PCCF

CONOCO MVRD/DKOT FED 21
CHCR/FRLOC
CONOCO FED 4
PCCF
CONOCO FED 16A
MVRD
BAYLESS RL GRAHAM C WN FED COM 1
GRAHAM C WN FED COM 10
FRLOC
ARCO GRAHAM C WN FED COM 1
PCCF/MVRD
CONOCO GRAHAM A WN FED 2
PCCF
CONOCO GRAHAM C WN FED COM 1A
MVRD/CHCR
CONOCO FED 7
PCCF
CONOCO FED 18
DKOT/MVRD

CTOC GRAHAM COM 1
DKOT
M & G DRLG GRAHAM 63A
MVRD
M & G DRLG GRAHAM 36
PCCF
R & G DRLG GRAHAM 61
GRAHAM
MVRD/CHCR
BAYLESS RL GRAHAM B WN FED
FRLOC
M & G DRLG GRAHAM 61A
MVRD
CONOCO GRAHAM B WN FED
PCCF
M & G DRLG GRAHAM 48
DKOT/MVRD
M & G DRLG GRAHAM 98
FRLOC
R & G DRLG GRAHAM 30
PCCF
R & G DRLG GRAHAM 30A
PCCF

CTOC FLORANCE 88E
DKOT
CTOC FLORANCE D LS 11
PCCF/MVRD

CTOC FLORANCE D LS 3
PCCF
CTOC FLORANCE 63M
MVRD/DKOT
CTOC AMOCO FLORANCE D LS 10
PCCF MVRD
CTOC FLORANCE 63E
MVRD/DKOT
CTOC FLORANCE 64
MVRD/DKOT
CTOC FLORANCE D LS 16
PCCF

BURLINGTON SCHULTZ 28
PCCF
BURLINGTON SCHULTZ STATE 12A
MVRD
BURLINGTON SCHULTZ 1
PCCF
BURLINGTON SCHULTZ COM G 13
MVRD
BURLINGTON SCHULTZ COM G 13A
MVRD
BURLINGTON SCHULTZ 3
PCCF
BURLINGTON SCHULTZ STATE 12
MVRD

BLEDSCO FED
DKOT
COR OXNARD V
P
BLEDSCO FED R 2
CHCR
BAYLESS RL OXNARD WN FED 10
FRLOC
ARCO OXNARD WN FED 3
PCCF
BAYLESS RL OXNARD WN FED 11
PCCF
ARCO OXNARD WN FED 2
FRLOC
BLEDSCO PET FED I 1
DKOT/MVRD
CONOCO OXNARD WN FED
PCCF
BLEI F

CTOC FLORANCE D LS 6
PCCF
CTOC FLORANCE D LS 9
PCCF/MVRD/CHCR
CTOC FLORANCE D LS 12
PCCF/MVRD

CTOC FLORANCE 63
MVRD/DKOT
AMOCO FLORANCE D LS 8
PCCF
AMOCO FLORANCE D LS 4
MVRD
CTOC FLORANCE 62M
MVRD/DKOT
CTOC FLORANCE D LS 16
PCCF
CTOC FLORANCE 79
PCCF
CTOC FLORANCE D LS 13
PCCF/MVRD
CTOC FLORANCE D LS 4A
MVRD
CTOC FLORANCE 68
MVRD

BURLINGTON SCHULTZ COM G 13A
MVRD
BURLINGTON SCHULTZ COM 4
PCCF
BAYLESS RL OXNARD WN FED 11
PCCF
FRLOC
BLEDSCO PET FED I 1
DKOT/MVRD
M & G DRLG MARRON 42A
CHCR/MVRD
M & G DRLG MARRON 29
PCCF
CTOC SCHWERDTFEGER A LS 15
CTOC SCHWERDTFEGER A LS 2
PCCF
CTOC SCHWERDTFEGER A LS 18
PCCF

BLEDSCO PET FED D 1
CHCR/MVRD
CONOCO MARRON WN
PCCF
BAYLESS RL OXNARD 4
FRLOC
M & G DRLG MARRON 31
PCCF
CONOCO MARRON WN
PCCF

CTOC FLORANCE 67
DKOT
CTOC FLORANCE D LS 7
PCCF

CTOC FLORANCE 67
DKOT
CTOC FLORANCE D LS 7
PCCF

CTOC FLORANCE D LS 14
PCCF/MVRD/CHCR
CTOC FLORANCE D LS 14A
MVRD
CTOC FLORANCE D LS 1
PCCF

M & G DRLG MARRON 31
PCCF
CONOCO MARRON WN
PCCF