

COPY
CABOT CORPORATION
BOX 1101
PAMPA, TEXAS

September 26, 1962

New Mexico Oil Conservation Commission
P. O. 871
Santa Fe, New Mexico

Gentlemen:

Cabot Corporation hereby requests administrative approval of an exception to Rule 303(a) to permit commingling in common facilities of oil and gas produced from two separate common sources of supply. Administrative approval of an exception to Rule 309-A to permit commingling of production from two leases in a common tank battery is also requested.

The exceptions are requested for Cabot Corporation's Humble-State No. 1, a North Bagley Wolfcamp well, and the State of New Mexico "L" No. 1, a North Bagley Upper Penn well. Data on liquid values are shown below:

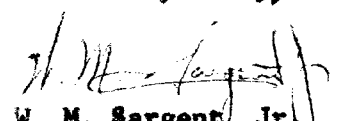
	<u>Upper Penn</u>	<u>Wolfcamp</u>
API Gravity	48°	50°
Value	\$3.01/bbl	\$3.01/bbl
Daily Volume (October)	132 BPD	129 BPD
API Gravity of Composite		49°
Value of Composite		\$3.01/bbl

As shown above the value of production from the individual zones will not be lessened by commingling.

Attached is a schematic diagram of the proposed installation and a plat showing leases and wells involved. Also attached are copies of letters to all interest owners in the two leases and the oil purchaser requesting their consent to the above application.

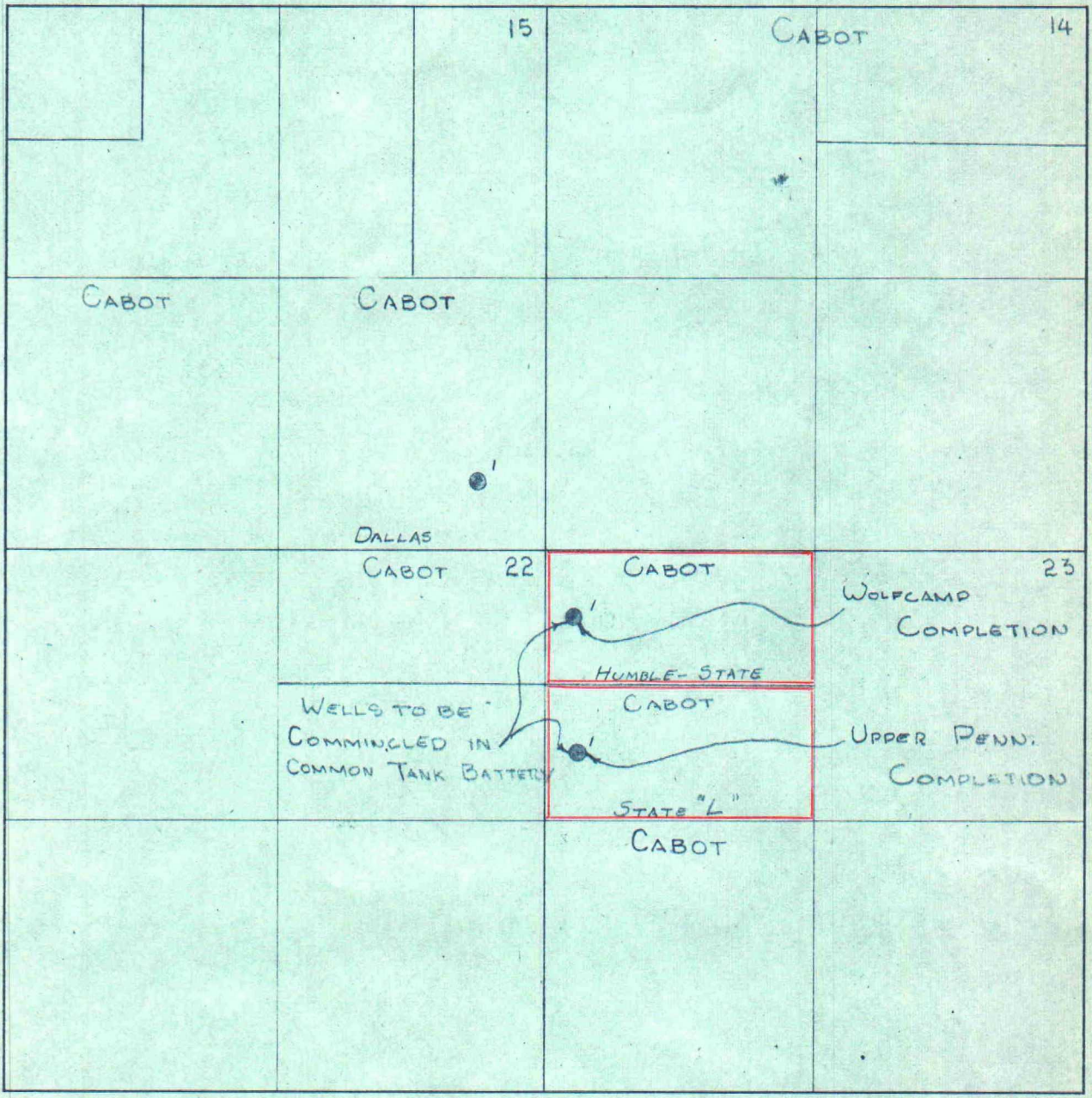
Your early approval of this application will be greatly appreciated.

Yours very truly,


W. M. Sargent, Jr.
Petroleum Engineer

WMS:mn
bcc: JWC - TLS - GMM

SECTION _____ TOWNSHIP 11S RANGE 33E COUNTY LEA STATE N. MEXICO



LOCATION PLAT
HUMBLE STATE & STATE "L"
LEASES

HUMBLE STATE LEASE
WOLFCAMP ZONE

SPT.

M

S

S.T.

STATE "L" LEASE
UPPER PENN ZONE

H.T.

M

S

SEE SECOND
DRAWING

PROPOSED
COMMON TANK BATTERY
HUMBLE STATE & STATE "L" LEASES
LEE COUNTY,
NEW MEXICO

CABOT CARBON COMPANY
PAMPA, TEXAS

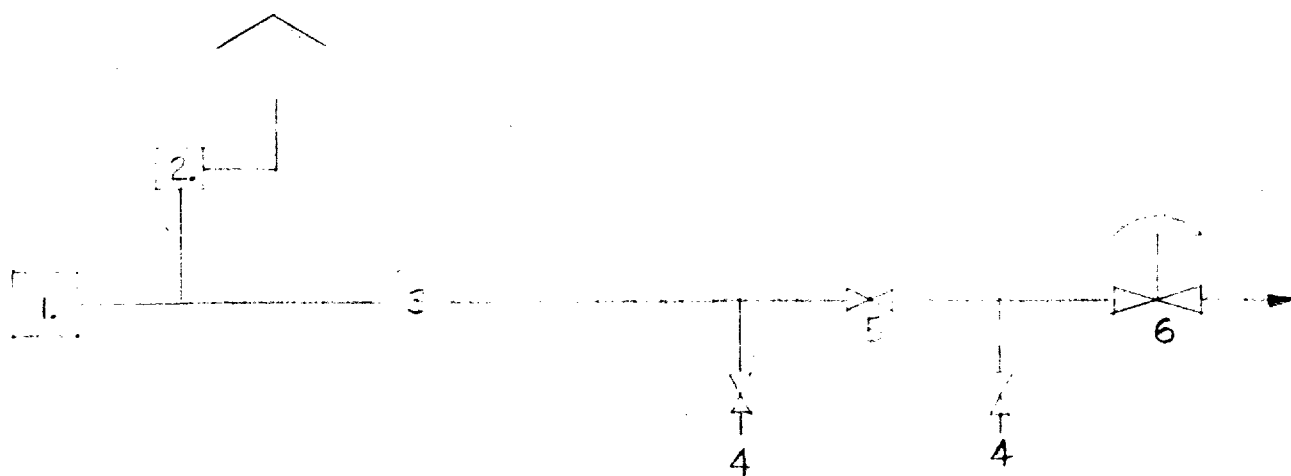
DRAWN BY:
D.V.B.

DATE
9-18-22

APPROVED:
SCALE

DRAWING NUMBER

1. A. C. Smith Model TEB-6 combination strainer and deareator
2. Instruments Inc. Model B-7782 sampler with 1 gal. plastic container
3. A. C. Smith Model T-600 Positive Displacement Meter with horizontal non-reset counter, automatic temperature compensated.
4. Nordstrom Fig. 142 plug valves.
5. Dual seal gate valve with tell tale tap.
6. National Tank Company Model RDSG-201 back pressure valve.



This drawing is the property of NATIONAL TANK COMPANY and is lent to the recipient for his confidential use only. In consideration of the loan of this drawing, the recipient promises and agrees that it shall not be used in any way detrimental to the interests of NATIONAL TANK COMPANY, that it shall be returned upon request, and that it shall not be reproduced, copied, lent, or otherwise disposed of, directly or indirectly, without the written permission of NATIONAL TANK COMPANY.

Schematic Flow Dia.
of
FD Skid Unit

DRAWN	DATE
CH'K'D	SCALE
APPROVED	
CUSTOMER Cabot	
SHOP ORDER NO.	

DRAWING
FILE NO.

D-1058

REVISION NO.



NATIONAL TANK COMPANY, TULSA, OKLA., U.S.A.



CABOT CORPORATION P. O. BOX 1101, PAMPA, TEXAS

OIL AND GAS
DIVISION

CABLE ADDRESS "CABLAK" PAMPA
TELEPHONE MOHAWK 4-2581

September 26, 1962

Commissioner of Public Lands
State of New Mexico
P. O. Box 791
Santa Fe, New Mexico

Gentlemen:

Cabot Corporation is making application to the Oil Conservation Commission for approval of exceptions to Rules 303(a) and 309-A to permit commingling of production from Cabot's Humble-State and State "L" leases. This will involve commingling of production from two common sources of supply (Wolfcamp and Pennsylvanian) from the North Bagley Field.

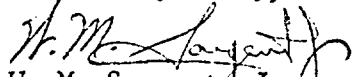
Both leases are on State land. The Humble-State lease covers the N/2 NW/4 Section 23, T11S, R33E, and the State "L" lease covers the S/2 NW/4 Section 23, T11S, R33E.

Commingling will be done in accordance with the Oil Conservation Commission's "Manual for the Installation and Operation of Commingling Facilities". The physical hookup will probably be similar to that shown in Figure 1 of the Manual.

If the Land Department has no objections to the granting of the exceptions, it is respectfully requested that you so notify the Oil Conservation Commission of your decision as soon as possible. It is requested that a copy of any letter to the Oil Conservation Commission concerning this request be forwarded to the above address.

Your cooperation in this matter is appreciated.

Yours very truly,


W. M. Sargent, Jr.
Petroleum Engineer

WMS:mn



CABOT CORPORATION P. O. BOX 1101, PAMPA, TEXAS

OIL AND GAS
DIVISION

CABLE ADDRESS "CABLAK" PAMPA
TELEPHONE MOHAWK 4-2581

September 26, 1962

Humble Oil and Refining Company
P. O. Box 1597
Roswell, New Mexico

Gentlemen:

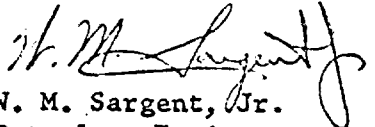
Cabot Corporation is making application to the State of New Mexico Oil Conservation Commission for administrative approval of exceptions to Rules 303(a) and 309-A to permit commingling in a common tank battery of production from Cabot's Humble-State and State of New Mexico "L" leases. This will involve commingling of production from two common sources of supply (Wolfcamp and Pennsylvanian) and two leases.

Inasmuch as your company has an overriding royalty interest in our Humble-State lease (N/2 NW/4 Section 23, T11S, R33E, Lea County) we are required to obtain a waiver consenting to the above exceptions. Attached for your convenience is a waiver prepared for signature. If there are no objections to the requested exceptions, please forward the completed waiver to the Oil Conservation Commission with one copy returned to this office.

Commingling will be done in accordance with the Oil Conservation Commission's "Manual for the Installation and Operation of Commingling Facilities". The physical hookup will probably be similar to that shown in Figure 1 of the Manual.

Your cooperation and early forwarding of the waiver will be appreciated.

Yours very truly,


W. M. Sargent, Jr.
Petroleum Engineer

WMS:mn
Encls.

COPY
CABOT CORPORATION
BOX 1101
PAMPA, TEXAS

September 26, 1962

Indiana Oil Purchasing Co.
P. O. Box 1725
Midland, Texas

Gentlemen:

Cabot Corporation is making application to the New Mexico Oil Conservation Commission for administrative approval of exceptions to Rules 303(a) and 309-A to permit commingling of production from Cabot's Humble-State and State of New Mexico "L" leases. This involves commingling of production from two separate leases and two separate common sources of supply (Wolfcamp and Upper Penn) in the North Eagley Field.

As oil purchaser from these two leases a waiver consenting to commingling in a common tank battery is required by the Commission. Attached for your convenience is a prepared waiver to be signed and sent to the New Mexico Oil Conservation Commission. Please return one copy of the waiver to this office.

Commingling will be done in accordance with the New Mexico Oil Conservation Commission's "Manual for the Installation and Operation of Commingling Facilities". Physical hookup will probably be similar to Figure 1 in the Manual.

Your cooperation in forwarding the approved waiver to the Commission as soon as possible will be greatly appreciated.

Yours very truly,

W. M. Sargent, Jr.
Petroleum Engineer

WMS:mn
Encls.



CABOT CORPORATION P. O. BOX 1101, PAMPA, TEXAS

OIL AND GAS
DIVISION

CABLE ADDRESS CABLAK PAMPA
TELEPHONE MOHAWK 4-2581

October 3, 1962

Commissioner of Public Lands
State of New Mexico
P. O. Box 791
Santa Fe, New Mexico

Attention Mr. Ted Bilberry

Gentlemen:

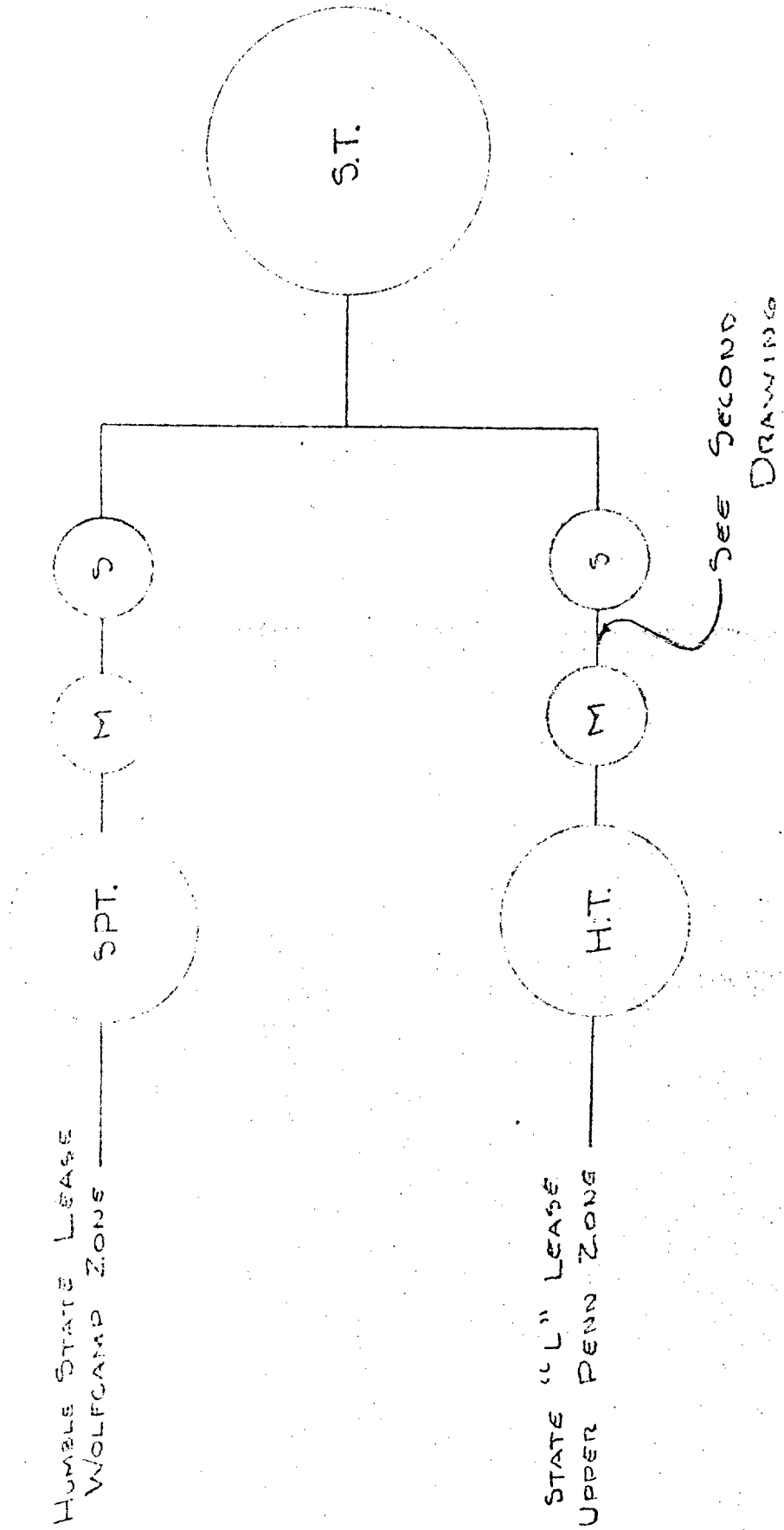
As per your letter of October 1, 1962 concerning Cabot's proposed commingling of production from their State "L" and Humble-State leases in the NW/4 Section 23, T11S, R33E, I am attaching a location plat and two drawings indicating the plan of installation for the project.

Oil gravities from the two zones are 48° API and 50° API. The resultant composite should be 49° API with a value of \$3.01 per barrel. The State's royalty will not be lessened by the granting of this application.

Yours very truly,


W. M. Sargent, Jr.
Petroleum Engineer

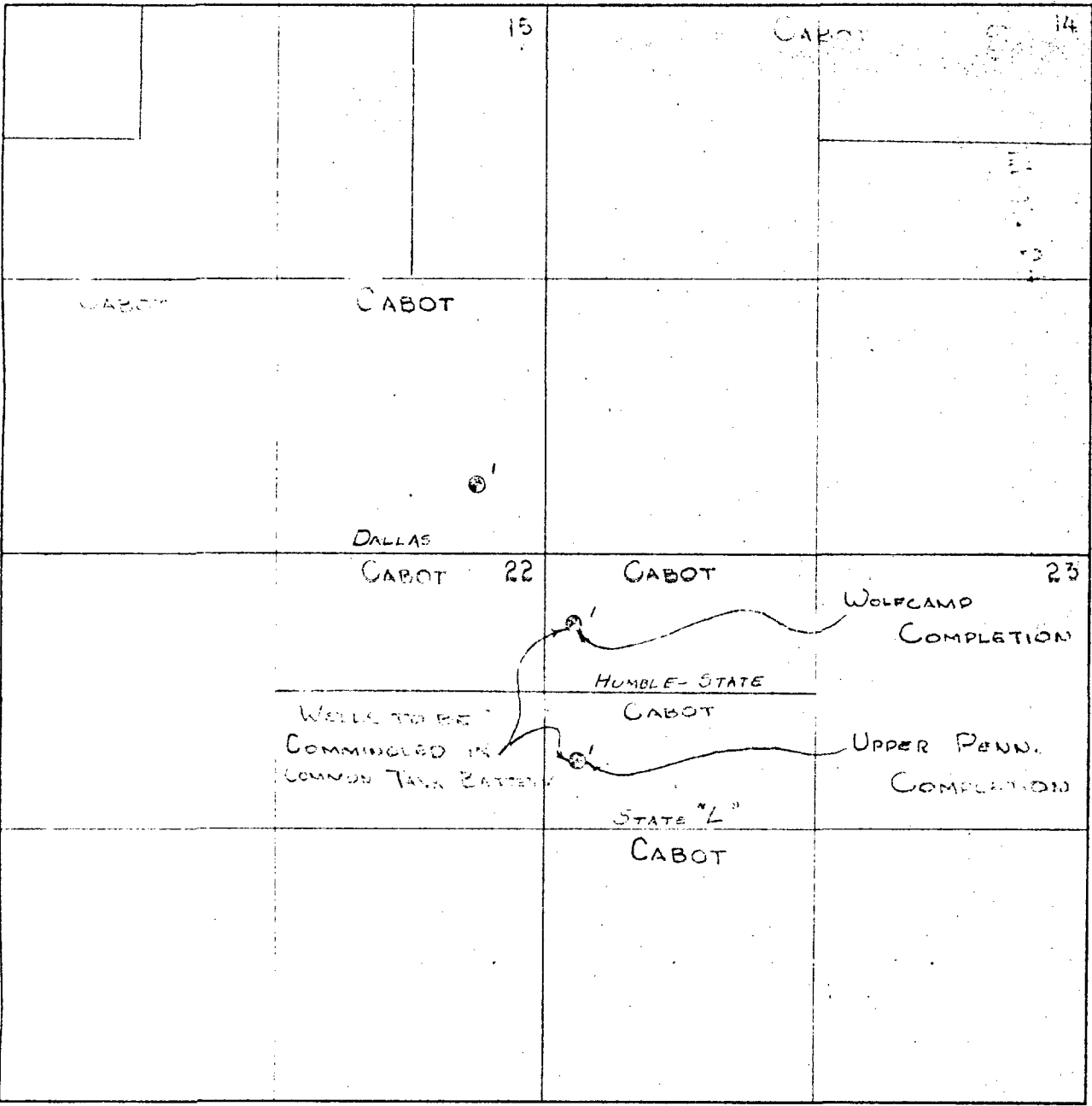
WMS:mn
Encls.



PROPOSED
COMMON TANK BATTERY
HUMBLE STATE & STATE "L" LEASES
LEE COUNTY,
NEW MEXICO

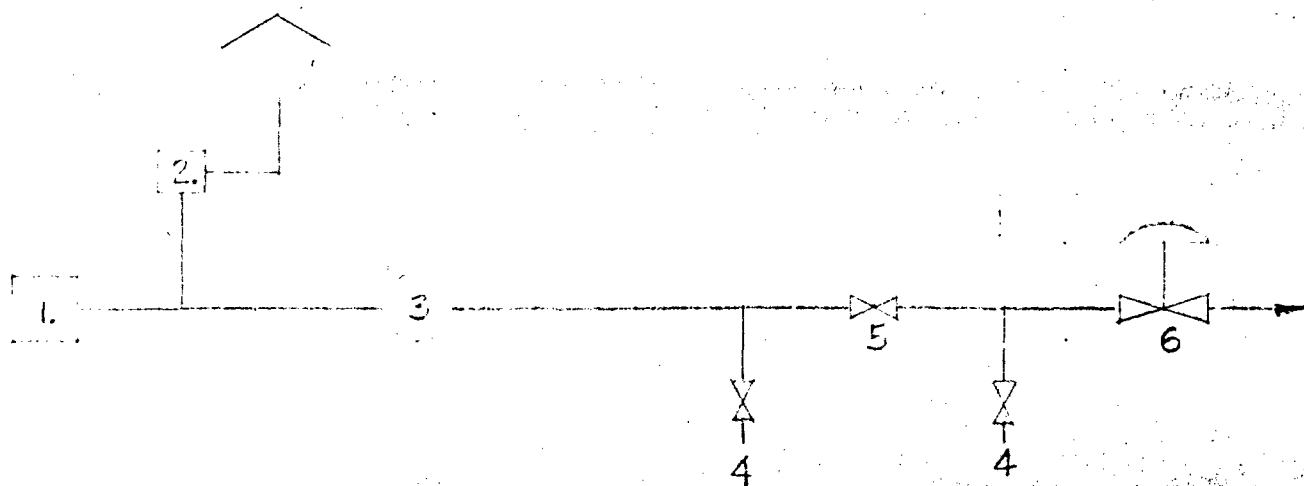
CABOT CARBON COMPANY PAMPA, TEXAS	
DRAWN BY: W.S.	DATE: 9-15-42
APPROVED:	SCALE:
DRAWING NUMBER	

SECTION _____ TOWNSHIP 11 S RANGE 33 E COUNTY LEAS STAT. N. MEXICO



LOCATION PLAT
HUMBLE STATE & STATE "L"
LEASES

1. A. C. Smith Model TEP-6 combination strainer and deareator
2. Instruments Inc. Model B-7782 sampler with 1 gal. plastic container
3. A. C. Smith Model T-600 Positive Displacement Meter with horizontal non-reset counter, automatic temperature compensated.
4. Nordstrom Fig. 142 plug valves.
5. Dual seal rate valve with tell tale tap.
6. National Tank Company Model PDSG-201 back pressure valve.



This drawing is the property of NATIONAL TANK COMPANY and is lent to the recipient for his confidential use only. In consideration of the loan of this drawing, the recipient promises and agrees that it shall not be used in any way detrimental to the interests of NATIONAL TANK COMPANY, that it shall be returned upon request, and that it shall not be reproduced, copied, lent, or otherwise disposed of, directly or indirectly, without the written permission of NATIONAL TANK COMPANY.

Schematic Flow Dia.
of
PD Spid Unit

DRAWN	DATE
CH'K'D	SCALE
APPROVED	
CUSTOMER Cabot	
SHOP ORDER NO.	

DRAWING
FILE NO.

D-1058

REVISION NO.



NATIONAL TANK COMPANY, TULSA, OKLA., U.S.A.