

ROBERT E. CHANDLER

REGISTERED PROFESSIONAL ENGINEER

2507 CIMMARON

MIDLAND, TEXAS 79701

January 23, 1968

Secretary Director
Oil Conservation Commission
P. O. Box 871
Santa Fe, New Mexico

PC-344
68 JAN 24 AM 8 3

Re: Yuronka and Chandler, Belcher
No. 1, SW $\frac{1}{4}$ SW $\frac{1}{4}$, Section 7,
T-22-S, R-38-E, Lea County, New
Mexico

Dear Sir:

We respectfully request administrative approval of an exception to Rule 303(a) to permit the commingling in common facilities of oil and gas production from the Drinkard Pool (lower tubing) and the Tubb Pool (upper tubing) underlying the captioned 40 acre tract. The ownership is common as to both pools under this 40 acre tract.

	<u>Drinkard</u>	<u>Tubb</u>	<u>Commingled</u>
Production Rate, BOPD	20	80 123	100
Oil Gravity, Degrees API	37	37	37
Posted Price	\$3.02	\$3.02	\$3.02

The value of the commingled production will be the same as the separated production. Attached are (1) a plat of the wells in the Drinkard Pool on the captioned tract, (2) a plat of the wells in the Tubb Pool on the captioned tract, (3) a schematic diagram of the installation (subtraction method consistent with Figures 5 and 6 in the "Manual for the Installation and Operation of Commingling Facilities, September 13, 1961")

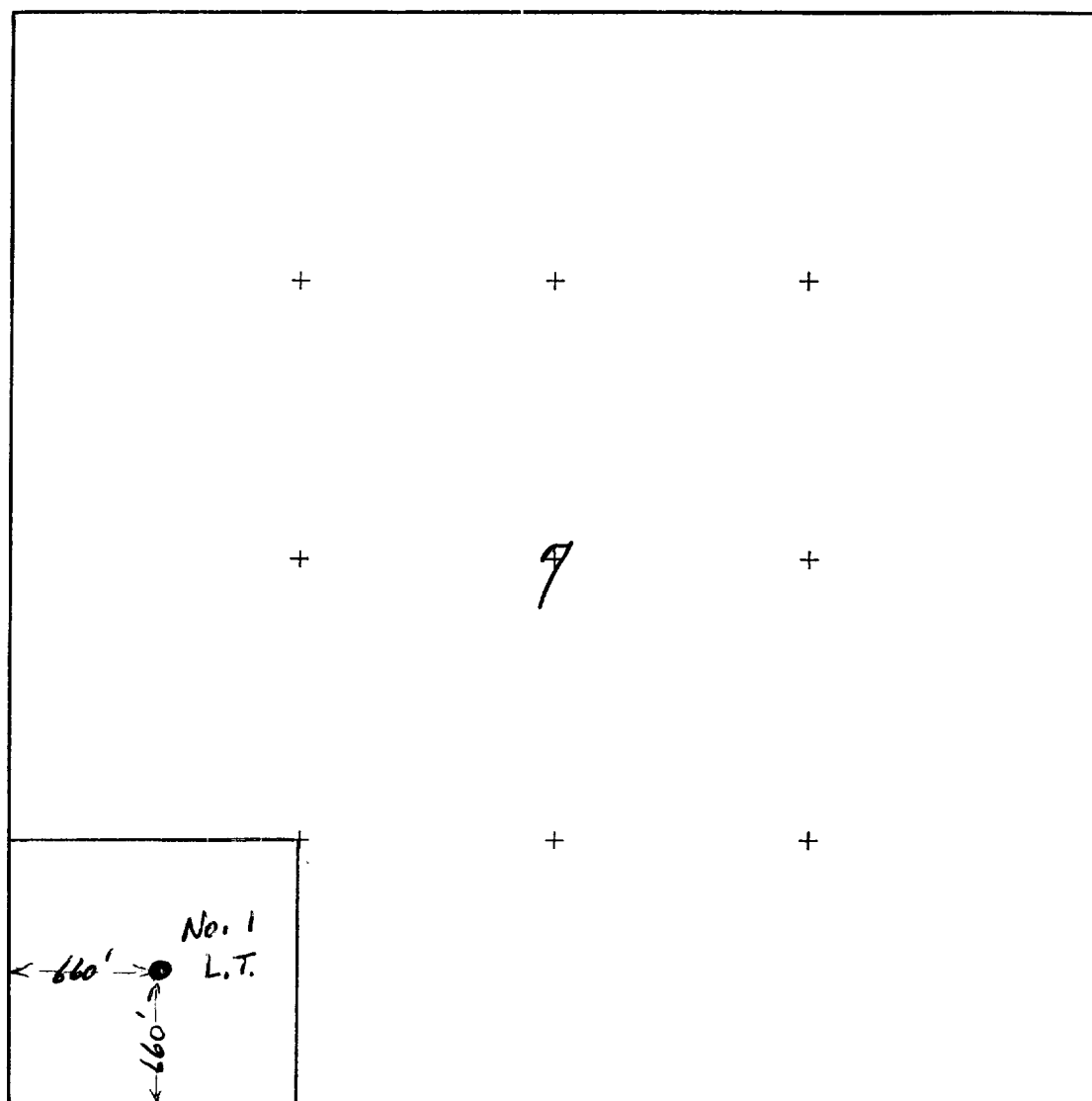
Yours truly

Yuronka and Chandler

by Robert E. Chandler
Robert E. Chandler

REC:jc

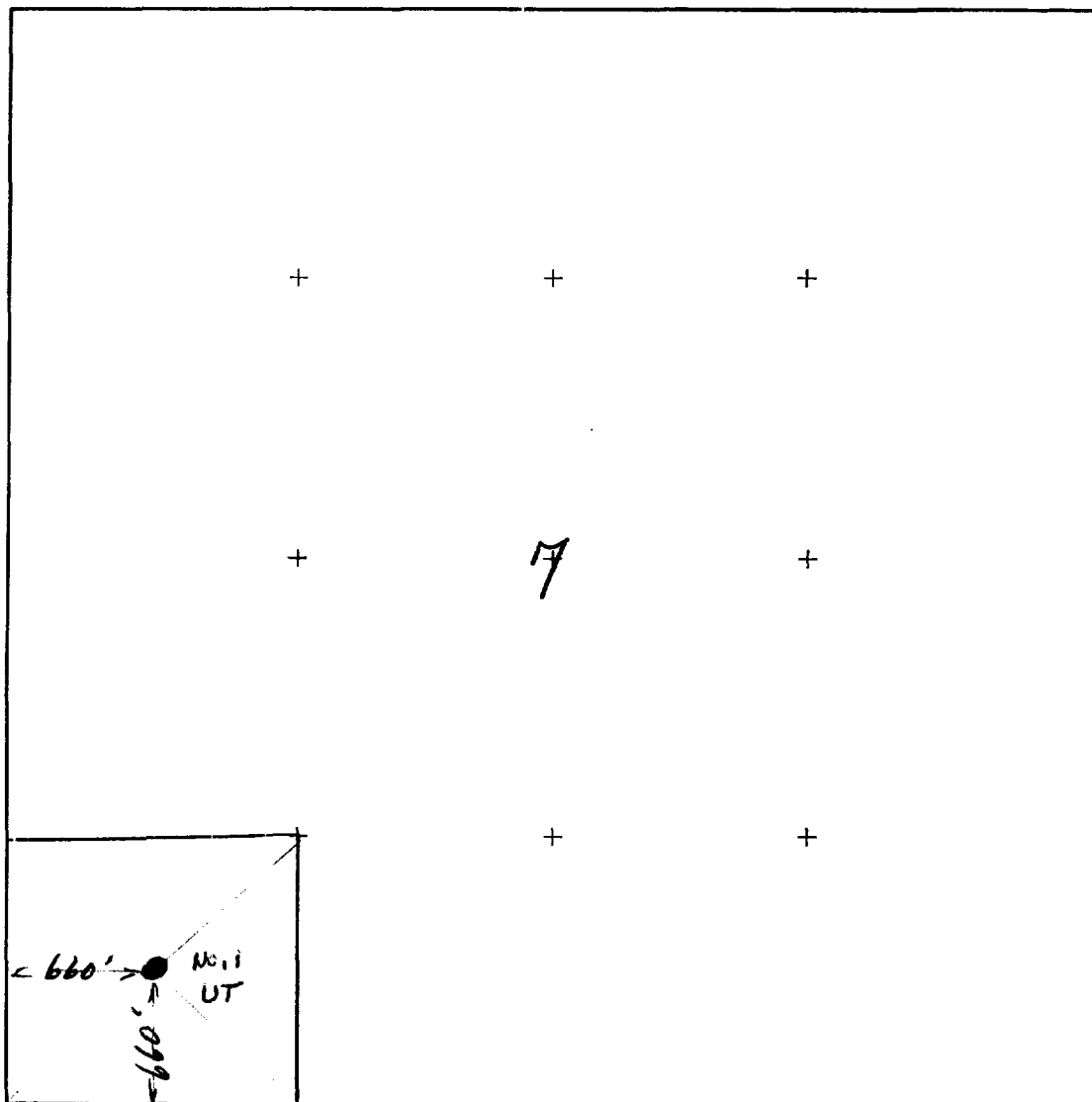
PLAT OF KRONKA AND CHANDLER
BELCHER LEASE



DRINKARD WELLS ON BELCHER LEASE

County LEA Block T-22-S R-38-E Section 7

PLAT OF YURONKA AND CHANDLER BELCHER LEASE



TUBB WELLS ON BELCHER LEASE

County LEA T-22-S R-38-E Section 7

Chandler Engineering Company

~~Suite 811 P.O. Box 2507~~ 2507 CIMMARON
Midland, Texas, 79701

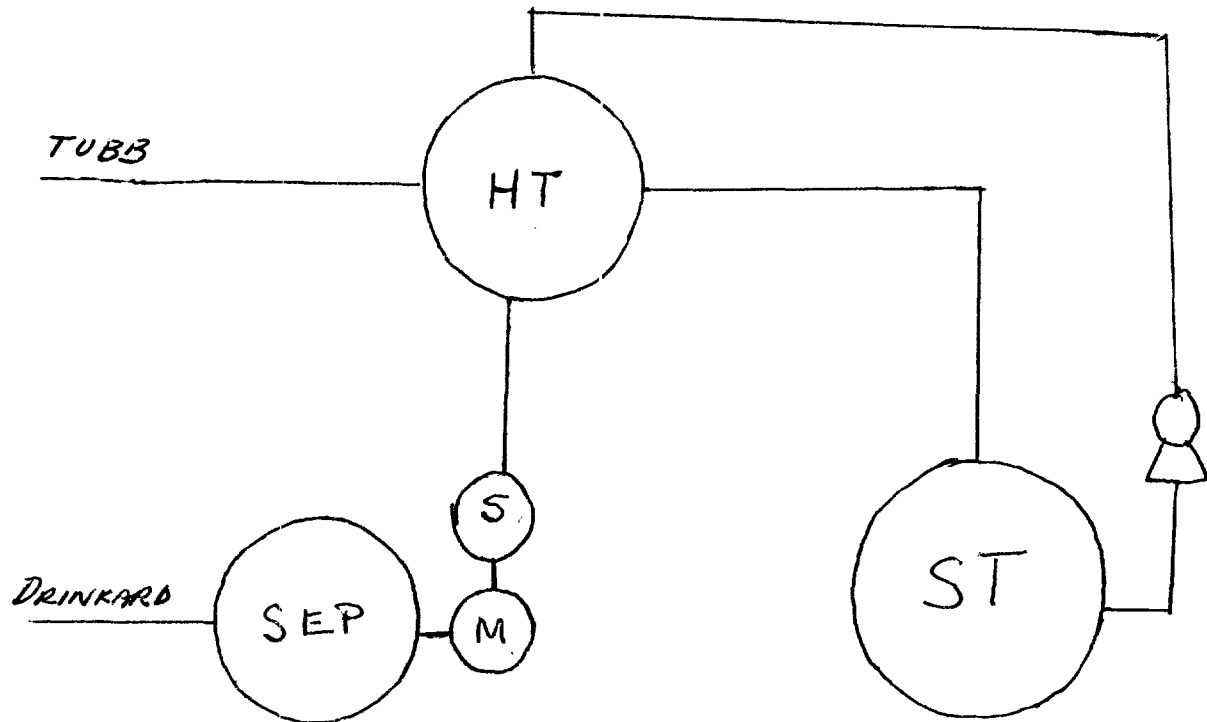


DIAGRAM BATTERY INSTALLATION
YURONKA AND CHANDLER BELCHER No.1

THERE WILL BE ONLY ONE WELL FROM EACH POOL ON THE 40
ACRE TRACT. THE DRINKARD WELL IS WATER FREE. THE AMOUNT
OF OIL MEASURED IN THE STOCK TANK LESS THE AMOUNT OF DRINKARD OIL
METERED THROUGH THE SEPARATOR WILL BE THE AMOUNT OF OIL
PRODUCED FROM THE TUBB POOL.