



PC-AMIS N/R

NEW MEXICO OIL CONSERVATION DIVISION
RECEIVED
JUN 20 1995

June 19, 1995

New Mexico Oil Conservation Division
Attn: Mr. David Catanach
2040 South Pacheco
PO Box 6429
Santa Fe, New Mexico 87505

Re: **Amendment to Commingle Order PC-439**
L. Van Etten #'s 15 and 16
Section 9, Township 20S, Range 37E
Lea County, New Mexico

Dear Mr. Catanach:

Recently, Texaco drilled two Weir Blinebry wells that are capable of top allowable production in the L. Van Etten Lease. In accordance to Commingle Order PC-439, this letter serves as notification to the Commission of these top allowable wells (L. Van Etten #'s 15 & 16). C-102 acreage plats, C-116 GOR tests, and a copy of the original commingle order are attached to this letter for your information.

If you have any questions concerning the new wells please contact Darrell J. Carriger @ (505) 397-0426.

Sincerely,

Darrell J. Carriger

file
Chrono

cc: NMOCD (Hobbs)

Attachments

DISTRICT I
P. O. Box 1980, Hobbs, NM 88240

DISTRICT II
P. O. Drawer DD, Artesia, NM 88210

DISTRICT III
1000 Rio Brazos Rd., Aztec, NM 87410

DISTRICT IV
P. O. Box 2088, Santa Fe, NM 87504-2088

State of New Mexico
Energy, Minerals and Natural Resources Department

Form C-102
Revised February 10, 1994

Instructions on back

OIL CONSERVATION DIVISION

PO Box 2088
Santa Fe, NM 87504-2088

Submit to Appropriate District Office

State Lease-4 copies
Fee Lease-3 copies

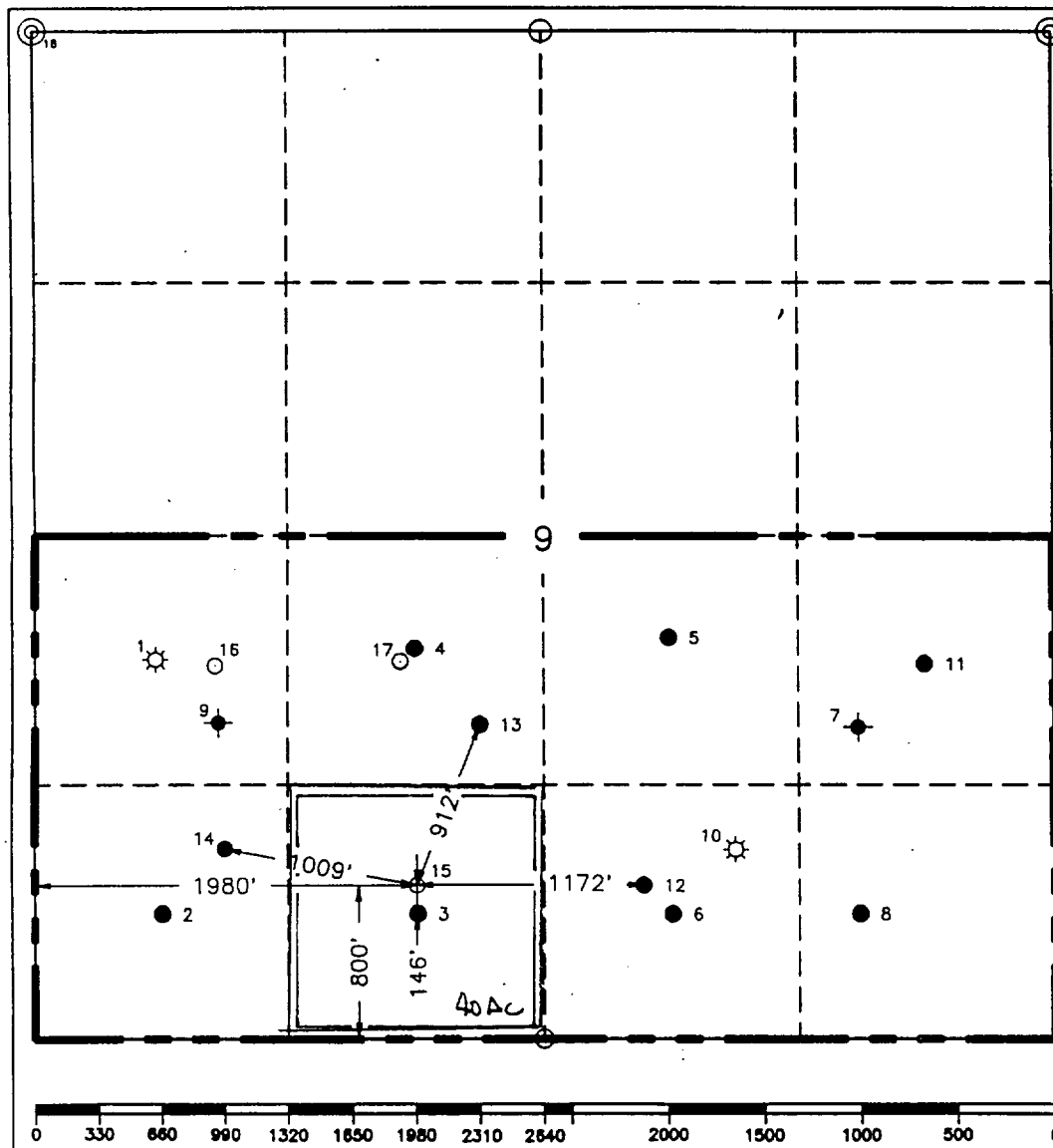
☐ AMENDED REPORT

WELL LOCATION AND ACREAGE DEDICATION PLAT

¹ API Number 30-D25-32880		² Pool Code 63780		³ Pool Name Weir Blinebry	
⁴ Property Code 11127		⁵ Property Name L. Van Etten			⁶ Well Number 15
⁷ GRID No. 22351		⁸ Operator Name TEXACO EXPLORATION & PRODUCTION, INC.			⁹ Elevation 3535'

¹⁰ Surface Location									
UL or lot no. N	Section 9	Township 20-S	Range 37-E	Lot Idn	Feet from the 800'	North/South line South	Feet from the 1980'	East/West line West	⁷ County Lea
¹¹ Bottom Hole Location If Different From Surface									
UL or lot no.	Section	Township	Range	Lot Idn	Feet from the	North/South line	Feet from the	East/West line	⁷ County
¹² Dedicated Acres 40		¹³ Joint or Infill		¹⁴ Consolidation Code		¹⁵ Order No.			

NO ALLOWABLE WILL BE ASSIGNED TO THIS COMPLETION UNTIL ALL INTERESTS HAVE BEEN CONSOLIDATED
OR A NON-STANDARD UNIT HAS BEEN APPROVED BY THE DIVISION.



¹⁶ OPERATOR CERTIFICATION I hereby certify that the information contained herein is true and complete to the best of my knowledge and belief.	
Signature <i>C. Wade Howard</i>	
Printed Name C. Wade Howard	
Position Engineer's Assistant	
Company Texaco Expl. & Prod. Inc.	
Date March 9, 1995	
¹⁷ SURVEYOR CERTIFICATION I hereby certify that the well location shown on this plat was plotted from field notes of actual surveys made by me or under my supervision, and that the same is true and correct to the best of my knowledge and belief.	
Date Surveyed March 3, 1995	
Signature & Seal Professional Surveyor	
Certificate No. 7264 John S. Piper	
Sheet	

○ = Staked Location • = Producing Well ● = Injection Well ◇ = Water Supply Well ◆ = Plugged & Abandon Well

DISTRICT I
P. O. Box 1980, Hobbs, NM 88240

DISTRICT II
P. O. Drawer DD, Artesia, NM 88210

DISTRICT III
1000 Rio Brazos Rd., Aztec, NM 87410

DISTRICT IV
P. O. Box 2088, Santa Fe, NM 87504-2088

State of New Mexico
Energy, Minerals and Natural Resources Department

OIL CONSERVATION DIVISION

PO Box 2088
Santa Fe, NM 87504-2088

Form C-102
Revised February 10, 1994

Instructions on back

Submit to Appropriate District Office

State Lease-4 copies
Fee Lease-3 copies

☐ AMENDED REPORT

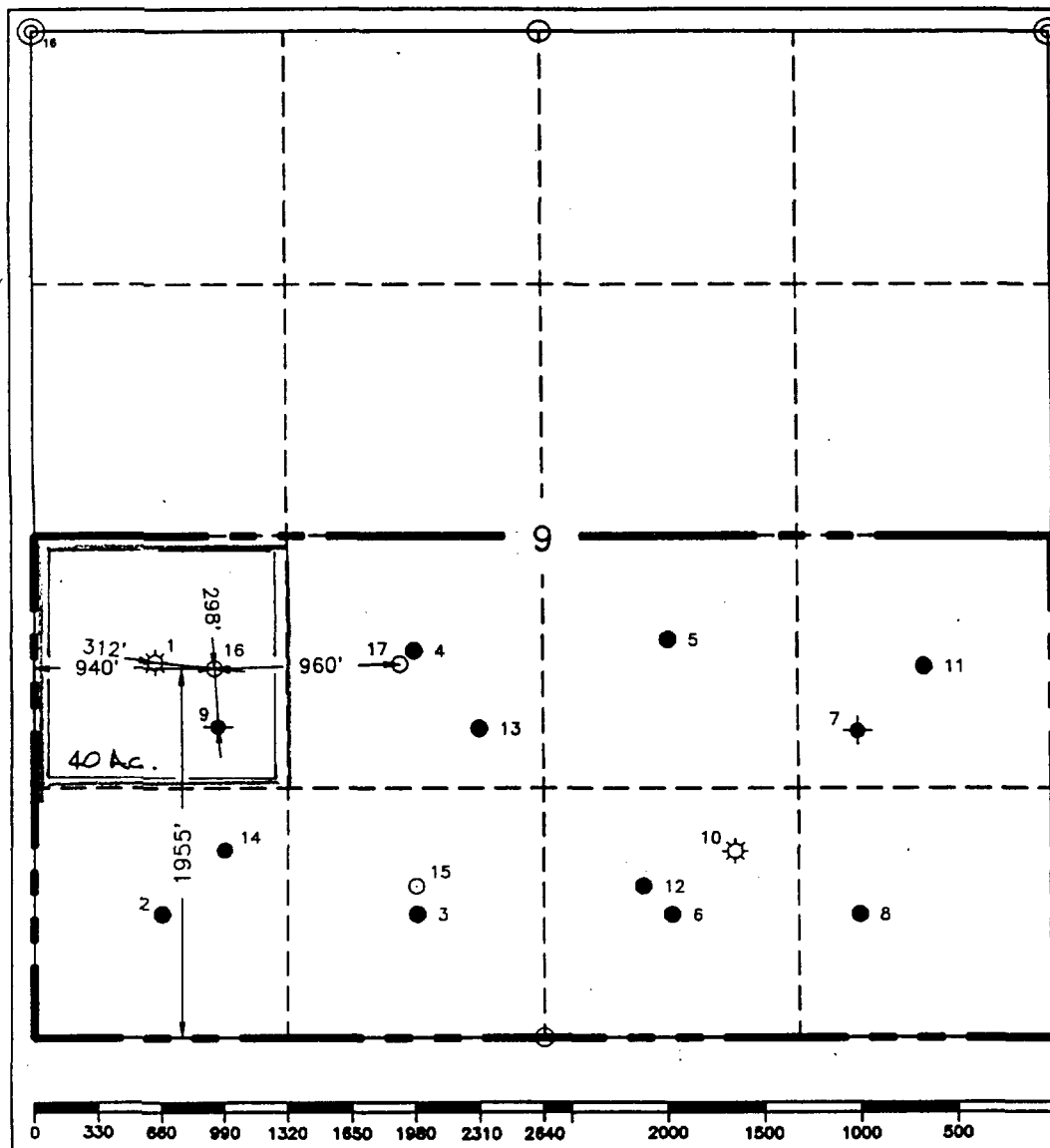
WELL LOCATION AND ACREAGE DEDICATION PLAT

¹ API Number 30-025-32881		² Pool Code 63780	³ Pool Name Weir Blinebry
⁴ Property Code 11127	⁵ Property Name L. Van Etten		⁶ Well Number 16
⁷ GRID No. 22351	⁸ Operator Name TEXACO EXPLORATION & PRODUCTION, INC.		⁹ Elevation 3547'

¹⁰ Surface Location									
UL or lot no. L	Section 9	Township 20-S	Range 37-E	Lot Idn	Feet from the 1955'	North/South line South	Feet from the 940'	East/West line West	⁷ County Lea

¹¹ Bottom Hole Location If Different From Surface									
UL or lot no.	Section	Township	Range	Lot Idn	Feet from the	North/South line	Feet from the	East/West line	⁷ County
¹² Dedicated Acres 40		¹³ Joint or Infill		¹⁴ Consolidation Code		¹⁵ Order No.			

NO ALLOWABLE WILL BE ASSIGNED TO THIS COMPLETION UNTIL ALL INTERESTS HAVE BEEN CONSOLIDATED
OR A NON-STANDARD UNIT HAS BEEN APPROVED BY THE DIVISION.



¹⁰ OPERATOR CERTIFICATION	
I hereby certify that the information contained herein is true and complete to the best of my knowledge and belief.	
Signature C. Wade Howard	
Printed Name C. Wade Howard	
Position Engineer's Assistant	
Company Texaco Expl. & Prod. Inc.	
Date March 9, 1995	
¹⁵ SURVEYOR CERTIFICATION	
I hereby certify that the well location shown on this plat was plotted from field notes of actual surveys made by me or under my supervision, and that the same is true and correct to the best of my knowledge and belief.	
Date Surveyed March 3, 1995	
Signature & Seal of Professional Surveyor 7254 John S. Piper	
Certificate No. 7254	
Sheet	

○ = Staked Location ● = Producing Well ◆ = Injection Well ◇ = Water Supply Well ◆ = Plugged & Abandon Well

OIL CONSERVATION DIVISION
P.O. Box 2088
Santa Fe, New Mexico 87504-2088

Operator TEXACO EXPLORATION & PRODUCTION INC.	Pool Weir Blinney	County Lea
--	----------------------	---------------

Address P.O. BOX 730, HOBBS, NM 88240						TYPE OF TEST - (X)		Scheduled <input type="checkbox"/>		Completion <input type="checkbox"/>		Special <input checked="" type="checkbox"/>			
LEASE NAME	WELL NO.	LOCATION				DATE OF TEST	CHOKE SIZE	TBG. PRESS	DAILY ALLOW- ABLE	LENGTH OF TEST HOURS	PROD. DURING TEST				GAS - OIL RATIO CU FT/BBL.
		U	S	T	R						WATER BBLs.	GRAV. OIL	OIL BBLs.	GAS M.C.F.	
L. Van Etten	15	N	9	20S	37E	6/15/95	OPEN		107	24	160		107	111	1037
L. Van Etten	16	L	9	20S	37E	6/15/95	14/64	300#	107	24	0		107	80	748

Desa/Nichols 10-83 ver 2.0

LARGE FORMAT
EXHIBIT HAS
BEEN REMOVED
AND IS LOCATED
IN THE NEXT FILE