

Mark K. Mosley  
Division Manager  
Production Department  
Hobbs Division  
North American Production

Conoco Inc.  
P. O. Box 460  
726 E. Michigan  
Hobbs, NM 88240  
(505) 393-4141

January 12, 1983

New Mexico Oil Conservation Division  
Department of Energy and Minerals  
State of New Mexico  
P. O. Box 2088  
Santa Fe, New Mexico 87501

Attention: Mr. Michael Stogner

Dear Sir:

Application for Permission to Surface Commingle Production from the Hare Simpson Pool with Production from the Blinebry Oil and Gas, Wantz Abo and Drinkard Pools on our Lockhart B-12 Lease; Amendment to Commingling Order No. PC-536

Conoco Inc. requests administrative approval to surface commingle production from the Hare Simpson Pool with production from the Blinebry Oil and Gas, Wantz Abo and Drinkard Pools on our Lockhart B-12 Lease into a common tank battery located in the NW/4 of Section 12, T21S, R37E, Lea County, New Mexico.

Lockhart B-12 No. 5, the only well currently producing from the Hare Simpson Pool on the Lockhart B-12 Lease, recently tested for 24 BOPD, 1 BWPD and 45 MCFGPD. Quality of the crude from each pool is virtually identical, and commingling will not reduce its commercial value. The value of production is as follows:

<u>Zone</u>	<u>Oil Gravity</u>	<u>Daily Volume</u>	<u>Value Per Barrel</u>
Blinebry Oil and Gas	38.1°	16	\$31.96
Wantz Abo	39.1°	4	30.98
Drinkard	39.1°	5	31.98
Hare Simpson	48.0°	24	32.00

The working interest, royalty interest and overriding royalty interest for all zones are common. Production will be allocated on the basis of well tests for all wells except No. 5; production from Lockhart B-12 No. 5 will be metered separately by a 4' x 12', 3 phase separator.

Michael Stogner  
Page 2  
January 12, 1983

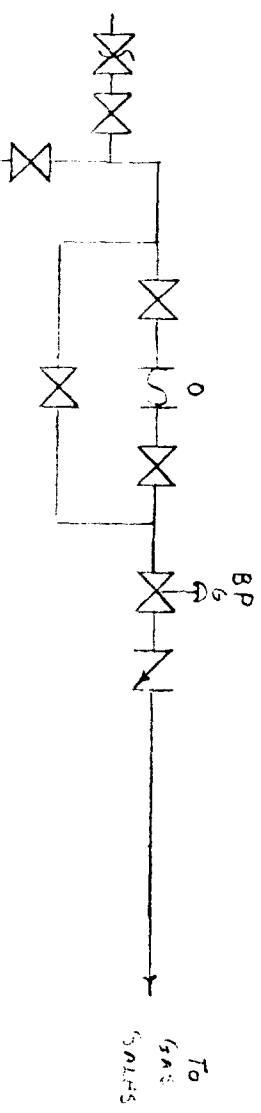
Lease and battery plats are attached for your review and file.

If you have any questions, please contact David G. Smylie, ext. 120 of this office.

Yours very truly,

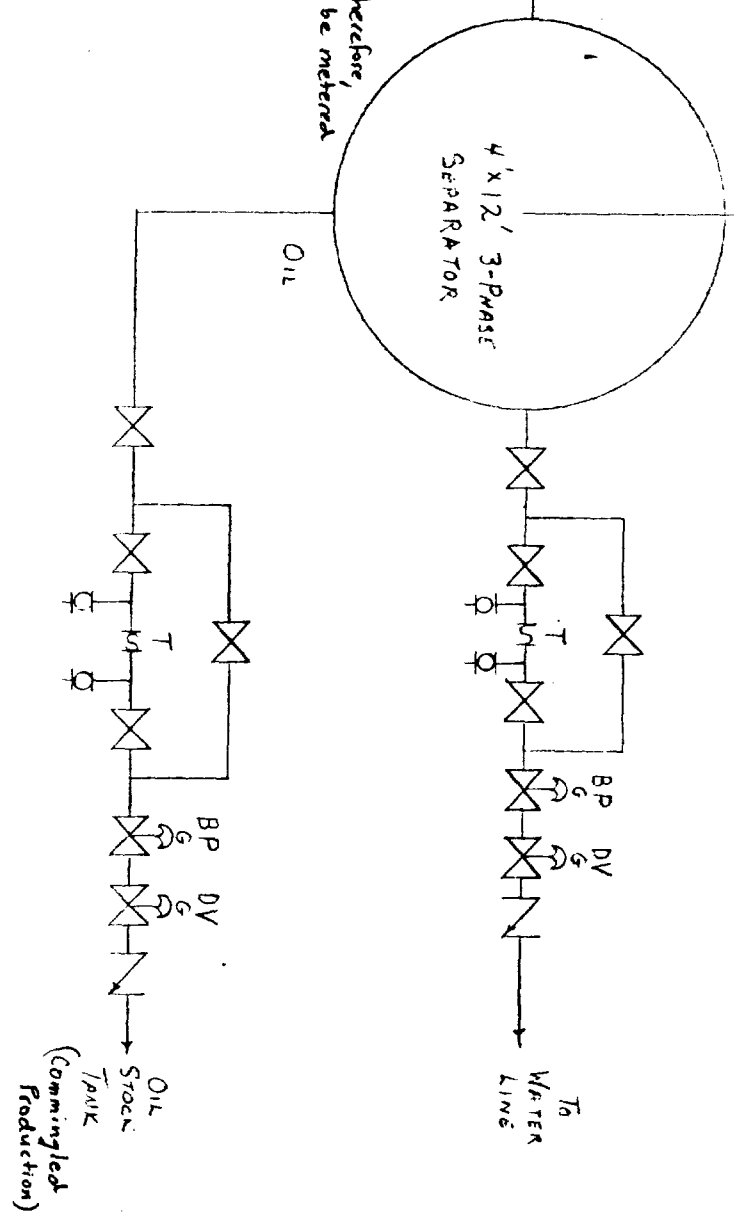
A handwritten signature in black ink, appearing to read "M Stogner", with a stylized flourish at the end.

DGS:cyg  
Attachments  
cc: Minerals Management Service  
P. O. Box 1857  
Roswell, New Mexico 88201



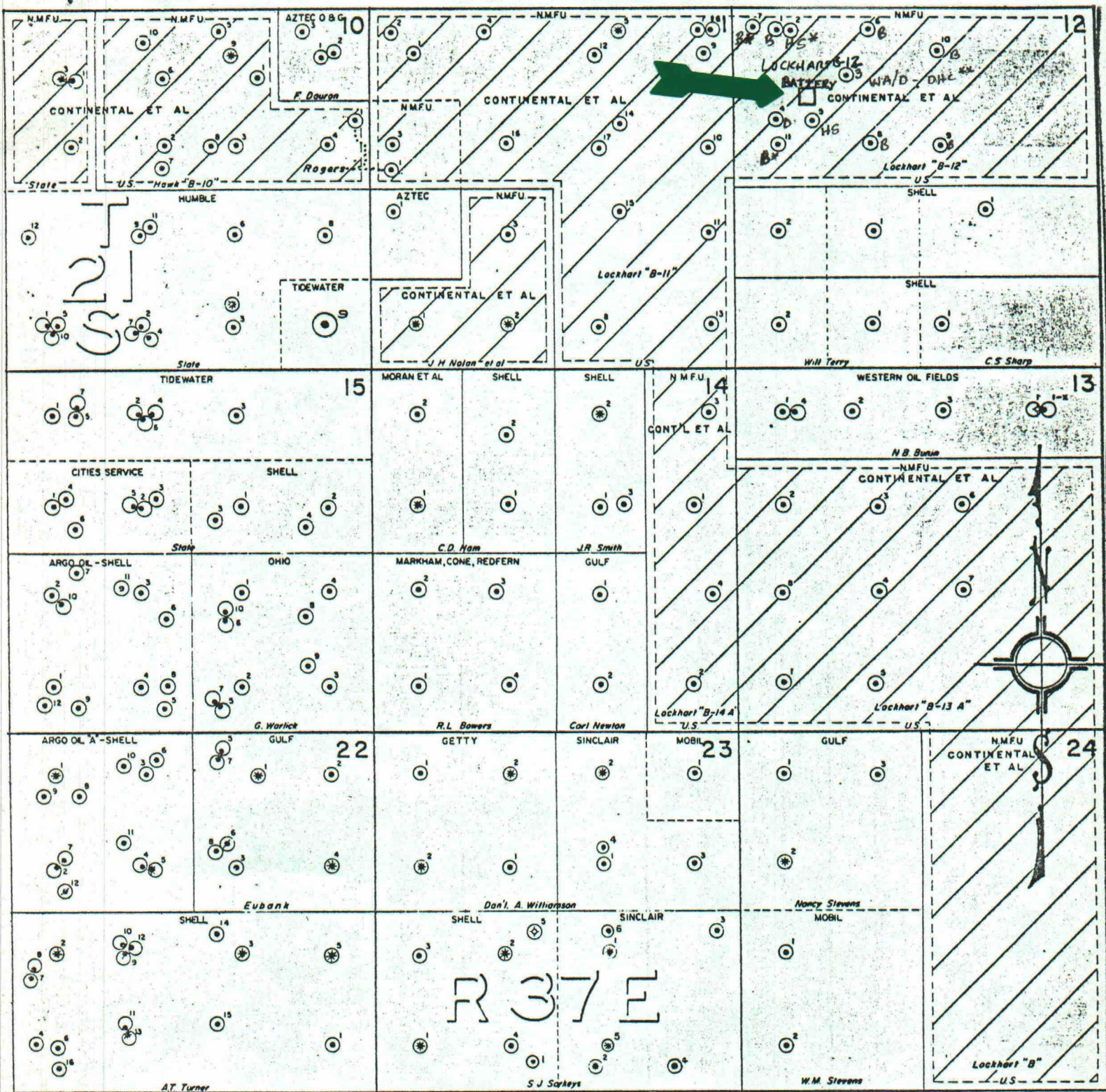
Lockhart B-12 #5

Note: #5 will be the only well going through this separator, therefore, production will be metered continuously.



LOCKHART B-12 #5 METERING SYSTEM  
(McKee)





B - Blinberry Oil & Gas Zone  
 WA - Wantz Abo Zone  
 D - Drinkard zone  
 HS - Hare Simpson

\* - Shut-in  
 \*\* - Downhole Commingled

CONTINENTAL OIL COMPANY  
 PRODUCTION DEPARTMENT  
 HOBBS DIVISION  
 LOCKHART B-12 LEASE PLAT  
 LEA COUNTY, NEW MEXICO  
 SCALE: 1" 2000'