

HUNT ENERGY CORPORATION

406 N. BIG SPRING
MIDLAND, TEXAS 79701

(915) 683-6186

Mr. Joe Ramey
New Mexico Oil Conservation Commission
PO Box 2088
Santa Fe, New Mexico 87501

January 29, 1980
PC-583
approved effective 2/15/80

Re: Mittie Weatherly Lease
Wells No. 2 and No. 8
Lea County, New Mexico
Surface Commingling

Dear Mr. Ramey:

N.B. Hunt as operator of the above captioned lease, requested administrative approval to commingle Fusselman oil production from our new Mittie Weatherly No. 8 well into existing facilities used for the production of Penrose Skelly oil from our Mittie Weatherly No. 2. The No. 8 well is producing from a newly discovered Fusselman pool.

Oil gravities from the above zones are Penrose Skelly API 34° and Fusselman API 36°. The mixture should yield approx. API 35°.

The Mittie Weatherly #2's oil falls under the category of stripper oil and is priced at \$35.00 per barrel which is the same as the new oil price for the Fusselman oil from the No. 8 well. The value of the combined production will not be reduced.

The Weatherly #2 produces at a fairly constant 5 barrels oil per day and has shown only a minor decline during the last few years. The Weatherly #8, is presently producing into a test tank and has not stabilized. Indications are that it will average approx. 15 barrels oil per day.

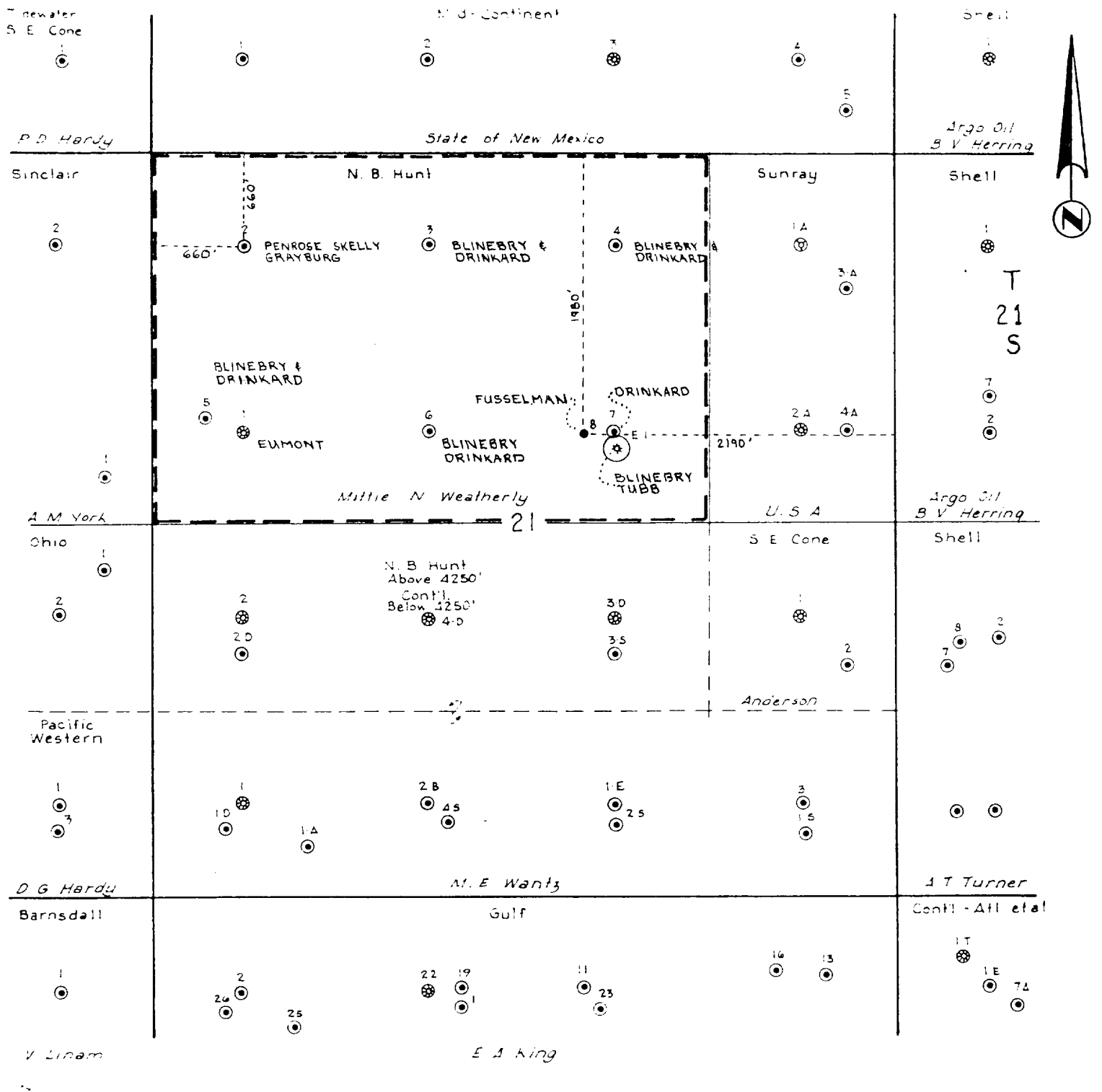
Hunt feels that approval of this request will simplify the surface production facilities and will in no way create problems. Monthly production from the two wells will be allocated by well test.

Attached is a plat showing both wells on this lease and the pool from which each is producing. Also shown is a schematic diagram of the production facilities showing the modification which will be made to accommodate the new well.

Yours Truly,

Tom Young
District Superintendent

R-37-E



HUNT ENERGY CORP.

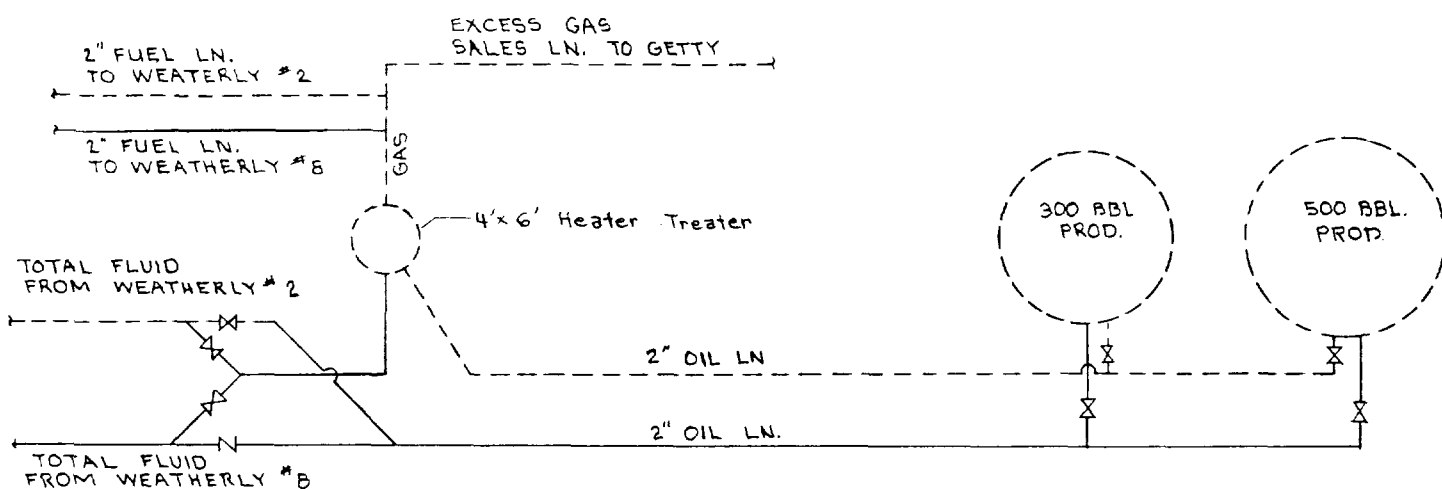
406 N. Big Spring
Midland, Texas

N. B. HUNT
MITTIE WEATHERLY LSE.

1-29-80

Lea Co., New Mexico

Drawn by: RAS



KEY

----- ORIGINAL
----- NEW

NO SCALE

HUNT ENERGY CORP.
406 N. Big Springs
MIDLAND, TEXAS

N.B. HUNT
WEATHERLY LSE.
PROD. FACILITY MODIFICATIONS
NECESSARY TO HANDLE
PROD. FROM WEATHERLY #E

LEA CO. N.M.

Drawn by RAS