

SAMEDAN OIL CORPORATION  
12600 NORTHBOROUGH, SUITE 250  
HOUSTON, TEXAS 77067-3299  
(713) 876-6150

February 14, 1994

State of New Mexico  
Oil Conservation Division  
Office of William LeMay  
PO Box 2088  
State Land Office Building  
Santa Fe, NM 87504

RE: Exception to Rule 303-A  
Surface Commingling of the SHARP LEASE  
Unit Letter F, Sec 12, T 23-S, R 37-E  
Lea County, NM

Samedan is requesting permission to surface commingle the Tubb Pool and the Lower Paddock/Blaine Pool in the Cline Field at the tank battery located on the Sharp #1 Lease location described above. We are successfully commingling our Sarah B Lease under Order PC-847 which involves the same two zones.

At the present time the Sharp #1 is the only well producing into this tank battery. We have opened up pay in both the Tubb Pool and the Lower Paddock/Blaine Pool. Both pools are currently shut in waiting on Surface Commingling Permit.

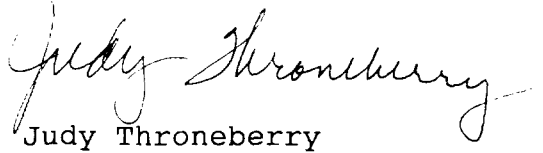
We are furnishing the following information for your consideration:

1. Samedan owns and operates 100% of the Sharp Lease.
2. Tubb Pool:      Daily Production = 20 Oil  
                    Gravity @ 60 = 44.9    Sulfur = .378  
                    Value = \$13.00 per bbl for Sweet Crude  
  
     Lwr Paddock/Blaine:    Daily Production = 130 Oil  
                                Gravity @ 60 = 46.2    Sulfur = .350  
                                Value = \$12.81 per bbl for Sweet Crude  
  
     Commingled Oil:            Expected gravity = 46.0  
                                Expected value = \$12.84
3. The actual commercial value of the commingled production will be equal to the sum of the values of the production from each common source of supply.

4. Separate metering of the production from each pool prior to commingling will be the method of allocation.
5. Schematic diagram of the battery installation.
6. Plat of the well location.

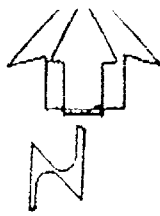
If I can be of further help please notify at (713) 876-6150

Thank you,

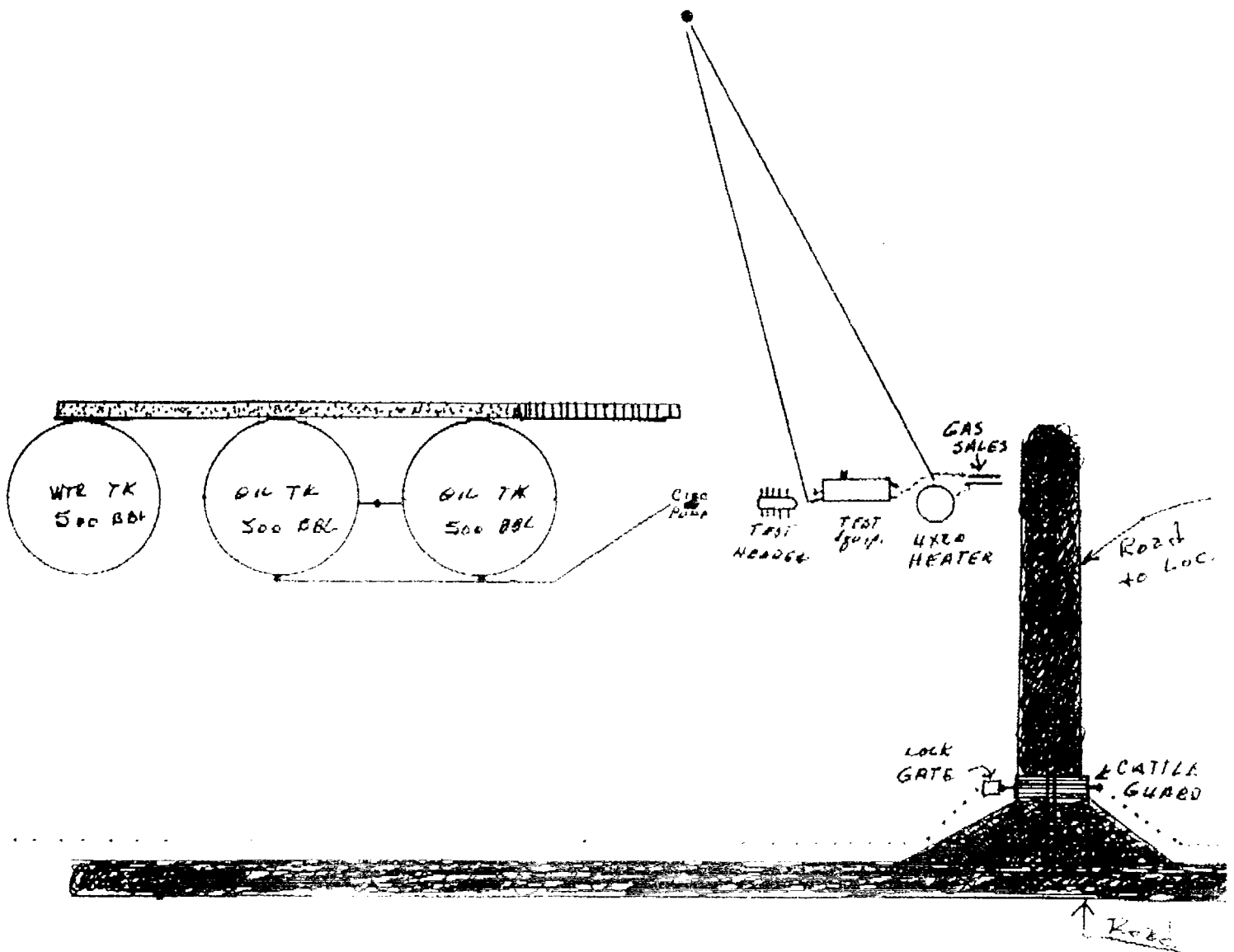
  
Judy Throneberry

attachments

xc District Office  
Hobbs, NM



Sharp  
No 1



**DISTRICT I**

P. O. Box 1980  
Hobbs, NM 88240

**DISTRICT II**

P. O. Drawer DD  
Artesia, NM 88210

**DISTRICT III**

1000 Rio Brazos Rd  
Aztec, NM 87410

**OIL CONSERVATION DIVISION**

P. O. Box 2088  
Santa Fe, New Mexico 87504-2088

**WELL LOCATION AND ACREAGE DEDICATION PLAT**

All distances must be from the outer boundaries of the section.

Operator <b>SAMEDAN OIL CORPORATION</b>			Lease <b>SHARP</b>		Well No. <b>1</b>
Unit Letter <b>F</b>	Section <b>12</b>	Township <b>23 SOUTH</b>	Range <b>37 EAST, N.M.P.M.</b>	County <b>LEA</b>	
Actual Footage Location of Well					
1980 feet from the		NORTH	line and	1980 feet from the	WEST line
Ground Level Elev. <b>3297'</b>	Producing Formation <b>Lower Paddock/Blinebry</b>		Pool <b>Cline</b>		<b>40</b> Acres

1. Outline the acreage dedicated to the subject well by colored pencil or hachure marks on the plat below.
2. If more than one lease is dedicated to the well, outline each and identify the ownership thereof (both as to working interest and royalty).
3. If more than one lease of different ownership is dedicated to the well, have the interest of all the owners been consolidated by communitization, unitization, forced-pooling, etc.?  
☐ Yes ☐ No If answer is "yes", type of consolidation \_\_\_\_\_  
If the answer is "no", list the owners and tract descriptions which have actually been consolidated. (Use the reverse side of this form if necessary.) \_\_\_\_\_  
No allowable will be assigned to the well until all interests have been consolidated (by communitization, unitization, forced-pooling, or otherwise) or until a non-standard unit, eliminating such interest, has been approved by the division.

**OPERATOR CERTIFICATION**

I hereby certify that the information herein is true and complete to the best of my knowledge and belief.

Signature  
*Judy Throneberry*  
Printed Name  
**Judy Throneberry**  
Position  
**Div Prod Clerk**  
Company  
**Samedan Oil Corp**  
Date  
**01/20/94**

**SURVEYOR CERTIFICATION**

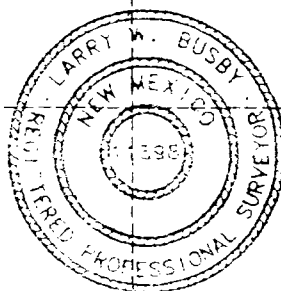
I hereby certify that the well location shown on this plat was plotted from field notes of actual surveys made by me or under my supervision, and that the same is true and correct to the best of my knowledge and belief.

Date Surveyed  
**SEPTEMBER 28, 1993**

Signature and Seal of  
Professional Surveyor

Certificate No.  
**LARRY W. BUSBY R.P.S. #11398**

LWB / 9303-1 / 45SE



**DISTRICT I**

P. O. Box 1980  
Hobbs, NM 88240

**DISTRICT II**

P. O. Drawer DD  
Artesia, NM 88210

**DISTRICT III**

1000 Rio Brazos Rd  
Aztec, NM 87410

**OIL CONSERVATION DIVISION**

P. O. Box 2088  
Santa Fe, New Mexico 87504-2088

**WELL LOCATION AND ACREAGE DEDICATION PLAT**

All distances must be from the outer boundaries of the section.

Operator <b>SAMEDAN OIL CORPORATION</b>			Lease <b>SHARP</b>		Well No. <b>1</b>
Unit Letter <b>F</b>	Section <b>12</b>	Township <b>23 SOUTH</b>	Range <b>37 EAST, N.M.P.M.</b>	County <b>LEA</b>	
Actual Footage Location of Well					
1980 feet from the <b>NORTH</b> line and		1980 feet from the <b>WEST</b> line			
Ground Level Elev. <b>3297'</b>	Producing Formation <b>Tubb</b>		Pool <b>Cline</b>	40 Acres	

1. Outline the acreage dedicated to the subject well by colored pencil or hachure marks on the plat below.
2. If more than one lease is dedicated to the well, outline each and identify the ownership thereof (both as to working interest and royalty).
3. If more than one lease of different ownership is dedicated to the well, have the interest of all the owners been consolidated by communitization, unitization, forced-pooling, etc.?  
☐ Yes ☐ No If answer is "yes", type of consolidation \_\_\_\_\_  
If the answer is "no", list the owners and tract descriptions which have actually been consolidated. (Use the reverse side of this form if necessary.) \_\_\_\_\_  
No allowable will be assigned to the well until all interests have been consolidated (by communitization, unitization, forced-pooling, or otherwise) or until a non-standard unit, eliminating such interest, has been approved by the division.

**OPERATOR CERTIFICATION**

I hereby certify that the information herein is true and complete to the best of my knowledge and belief.

Signature

*Judy Throneberry*  
Printed Name  
Judy Throneberry

Position

Div Prod Clerk

Company

Samedan Oil Corporation

Date

01/20/94

**SURVEYOR CERTIFICATION**

I hereby certify that the well location shown on this plat was plotted from field notes of actual surveys made by me or under my supervision, and that the same is true and correct to the best of my knowledge and belief.

Date Surveyed

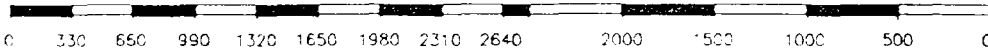
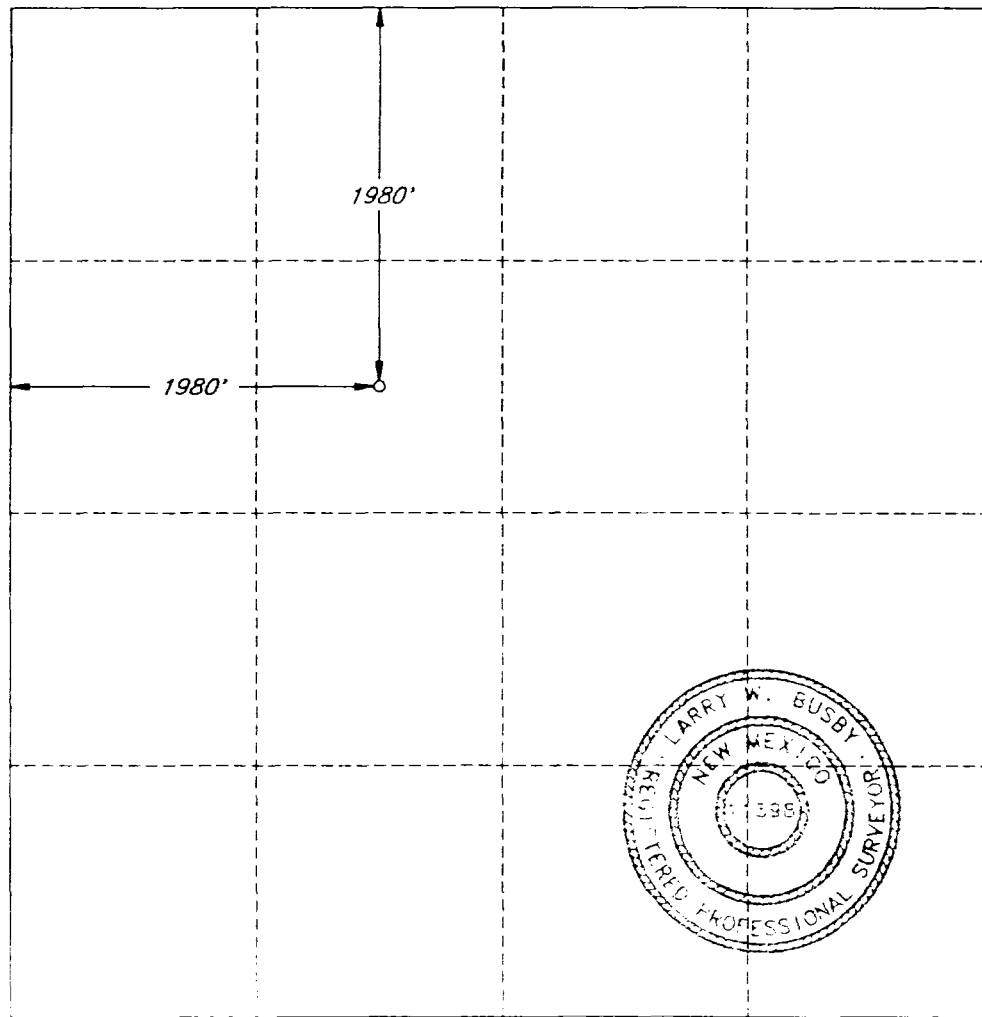
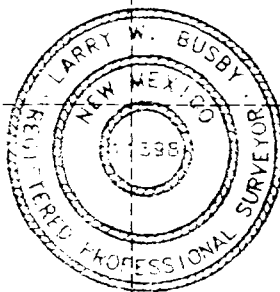
SEPTEMBER 28, 1993

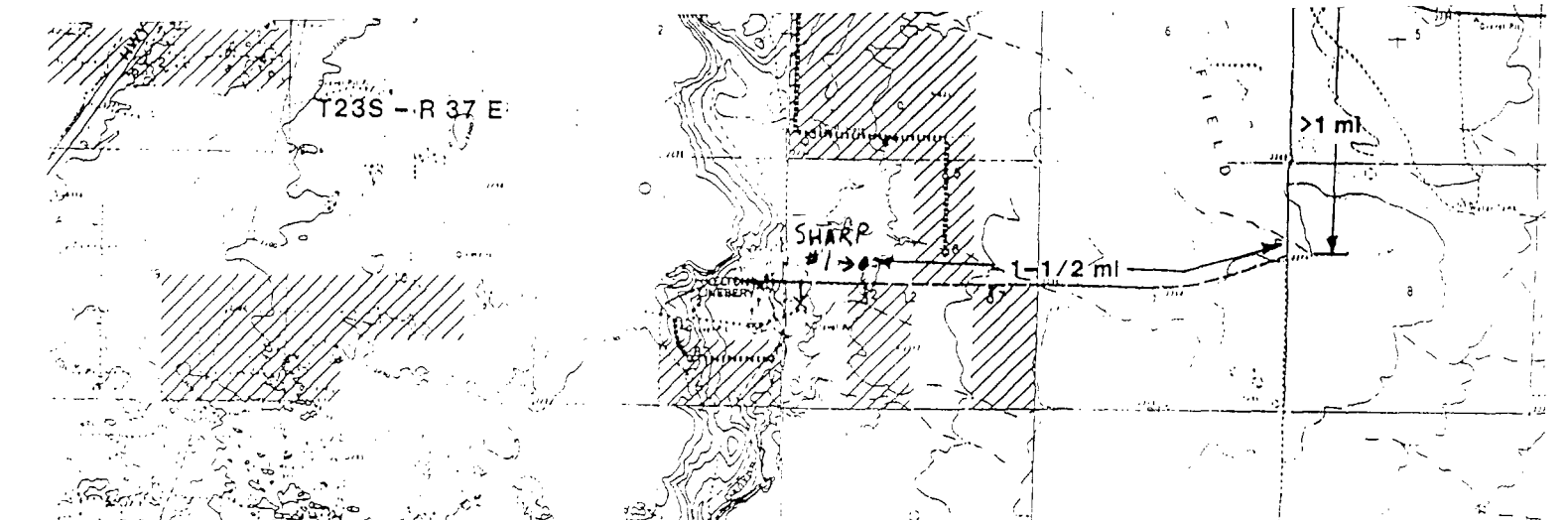
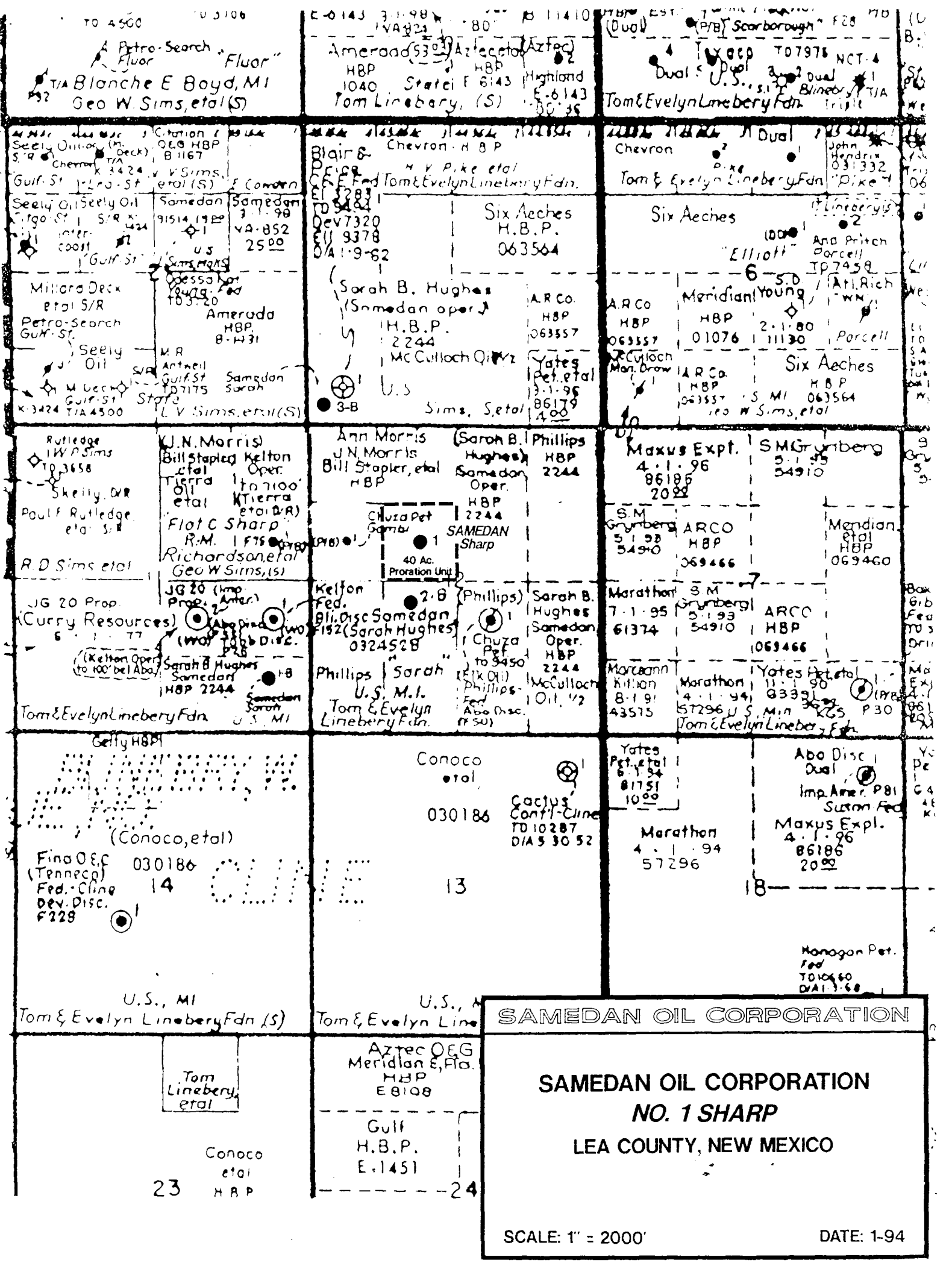
Signature and Seal of  
Professional Surveyor

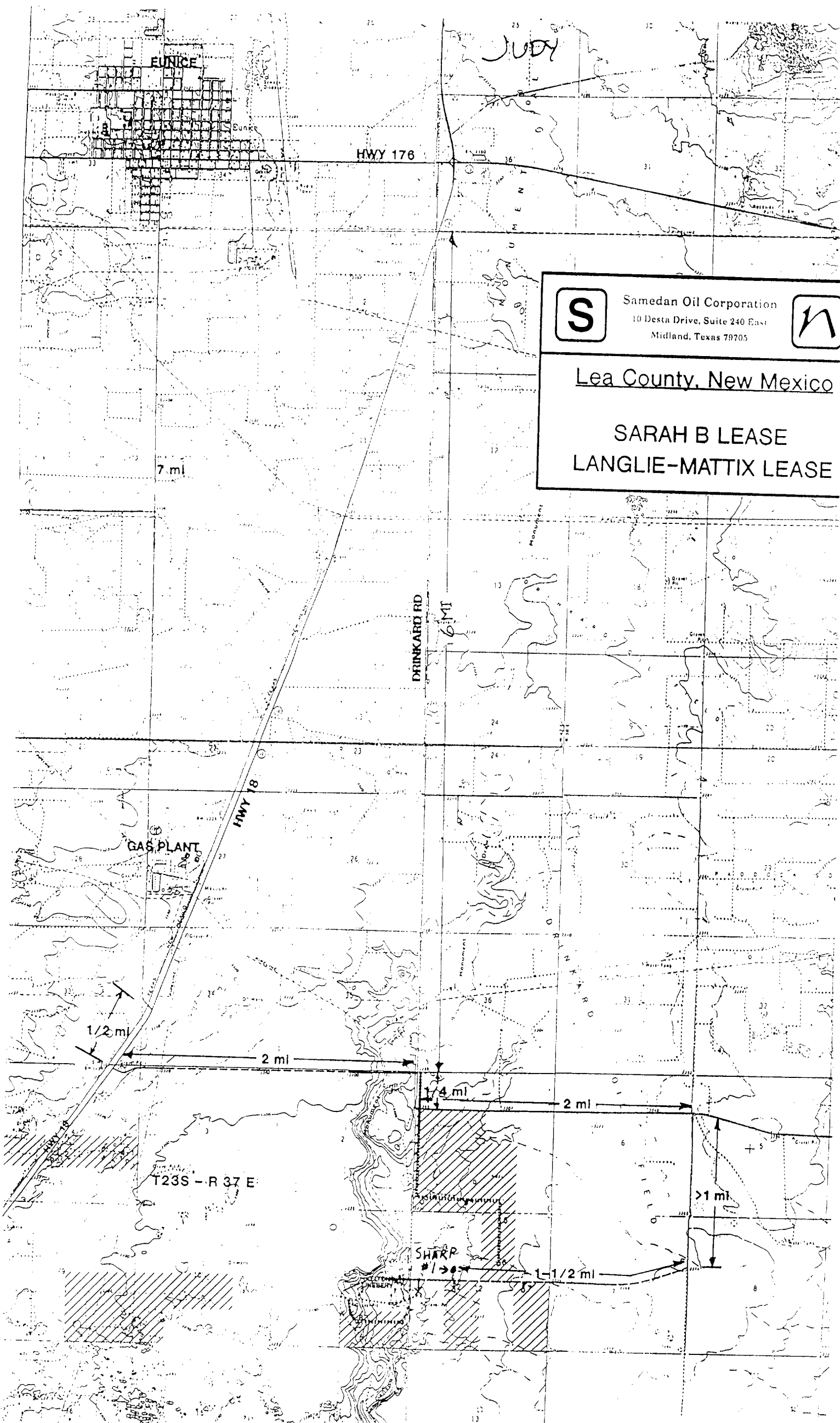
Certificate No.

LARRY W. BUSBY R.P.S. #11398

LWR / 9303-1 / 45SE







JUDY

EUNICE

HWY 176

7 ml

DRINKARD RD

6 MI

GAS PLANT

HWY 18

1/2 ml

2 ml

1/4 ml

2 ml

>1 ml

T23S - R 37 E

SHARP #1

1-1/2 ml