



CAL. COURTESY TOWN DR.

02 JUL 26 PM 1:31

July 24, 2002

**CERTIFIED MAIL:**

Mr. Michael E. Stogner  
New Mexico Oil Conservation Division  
1220 S. Saint Francis Dr.  
Santa Fe, New Mexico 87504

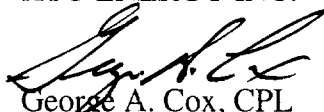
RE: Request to Amend Unorthodox Location Administrative Order NSL-4676  
XTO Energy Inc.'s E.H. Pipkin #8R Well  
Amended Location of 1,770' FSL and 1,040' FWL (NW/4 SW/4)  
Unit L, Section 1, T27N-R11W  
San Juan County, New Mexico  
Kutz-Gallup Pool

Dear Mr. Stogner:

Administrative Order NSL-4676 was issued on December 21, 2001 for XTO Energy Inc. to drill a well at a location of 1,845' FSL and 1,085' FWL in the above captioned section. A copy of the order is enclosed for your reference. During a recent site inspection of the location by the BLM, they requested that the location be moved 75' South and 45' West of our original location that was requested in NSL-4676. A copy of both the revised and original locations are reflected on the two (2) enclosed C-102.

XTO would like to request that the original Administrative Order NSL-4676 be revised to allow for the new requested footage. XTO Energy Inc. owns 100% working interest in this unit as well as in the offset wells in the Kutz-Gallup Pool, so there is no one to notify. Should you need any additional information please feel free to contact me at (817) 885-2454.

Sincerely,  
XTO ENERGY INC.



George A. Cox, CPL  
Landman

Enclosures

cc: Gary Markestad  
Jeff Patton  
Robin Tracy



# NEW MEXICO ENERGY, MINERALS and NATURAL RESOURCES DEPARTMENT

GARY E. JOHNSON

Governor

Jennifer A. Salisbury

Cabinet Secretary

December 21, 2001

Lori Wrotenbery

Director

Oil Conservation Division

XTO Energy, Inc.  
810 Houston Street - Suite 2000  
Fort Worth, Texas 76102-6298  
Attention: George A. Cox  
George\_Cox@XTOEnergy.com

Telefax No. (817) 870-1671

*Administrative Order NSL-4676*

Dear Mr. Cox:

Reference is made to the following: (i) your application dated November 29, 2001 (*application reference No. pKRV0-133938343*); and (ii) the records of the New Mexico Oil Conservation Division ("Division") in Aztec and Santa Fe: all concerning XTO Energy, Inc.'s ("XTO") request to drill its E. H. Pipkin Well No. 8-R 1845 feet from the South line and 1085 feet from the West line (Unit L) in Section 1, Township 27 North, Range 11 West, NMPM, San Juan County, New Mexico: (i) as a replacement Dakota gas well within the S/2 of Section 1 being a standard 320-acre lay-down gas spacing and proration unit for the Basin-Dakota Pool; and (ii) to test the shallower Gallup formation for oil within the NW/4 SW/4 of Section 1, being a standard 40-acre oil spacing and proration unit for the Kutz-Gallup Oil Pool (36550).

Pursuant to the well location requirements of the "*Special Rules and Regulations for the Basin-Dakota Pool*," as promulgated by Division Order No. R-10987-B, dated June 30, 2000, as amended by Division Order No. R-10987-B (1), dated August 10, 2000, the proposed well is considered to be standard for the 320-acre Dakota gas spacing and proration unit, but, pursuant to Division Rule 104.B (1) is unorthodox within the 40-acre Gallup oil unit.

This application has been duly filed under the provisions of Division Rule 104.F, revised by Division Order No. R-11231, issued by the New Mexico Oil Conservation Commission in Case No. 12119 on August 12, 1999.

It appears that all of Section 1 is a single federal lease (U. S. Government lease No. SF-078019) with common mineral ownership; therefore, there are no adversely effected offset mineral interests to the subject 40-acre tract.

By the authority granted me under the provisions of Division Rule 104.F (2) the above-described unorthodox Gallup oil well location within the above-described 40-acre standard oil spacing and proration unit for the proposed E. H. Pipkin Well No. 8-R is hereby approved.

Jurisdiction of this case is retained for the entry of such further orders as the Division may deem necessary.

Sincerely,

Lori Wrotenbery  
Director

LW/MES/kv

cc: New Mexico Oil Conservation Division - Aztec  
U. S. Bureau of Land Management - Farmington

**DISTRICT II**  
**811 South First, Artesia, N.M. 88210**

**DISTRICT III**  
**1000 Rio Brazos Rd., Aztec, N.M. 87410**

**DISTRICT IV**  
**2040 South Pacheco, Santa Fe, NM 87505**

## OIL CONSERVATION DIVISION

2040 South Pacheco  
Santa Fe, NM 87505

**Submit to Appropriate District Office**  
**State Lease - 4 Copies**  
**Fee Lease - 3 Copies**

☐ AMENDED REPORT

## WELL LOCATION AND ACREAGE DEDICATION PLAT

<sup>1</sup> API Number		<sup>2</sup> Pool Code	<sup>3</sup> Pool Name
<sup>4</sup> Property Code	<sup>5</sup> Property Name E. H. PIPKIN		<sup>6</sup> Well Number 8R
<sup>7</sup> OGRID No.	<sup>8</sup> Operator Name XTO ENERGY INC.		<sup>9</sup> Elevation 5944'

<sup>10</sup> Surface Location

UL or lot no.	Section	Township	Range	Lot Idn	Feet from the	North/South line	Feet from the	East/West line	County
L	1	27-N	11-W		1770	SOUTH	1040'	WEST	SAN JUAN

## 11 Bottom Hole Location If Different From Surface

UL or lot no.	Section	Township	Range	Lot Idn	Feet from the	North/South line	Feet from the	East/West line	County
13 Dedicated Acres			13 Joint or Infill		14 Consolidation Code		15 Order No.		

NO ALLOWABLE WILL BE ASSIGNED TO THIS COMPLETION UNTIL ALL INTERESTS HAVE BEEN CONSOLIDATED  
OR A NON-STANDARD UNIT HAS BEEN APPROVED BY THE DIVISION

16		17	
LOT 4		OPERATOR CERTIFICATION	
LOT 3		I hereby certify that the information contained herein is true and complete to the best of my knowledge and belief	
LOT 2		Signature _____	
LOT 1		Printed Name _____	
FD BC G.L.O. 1913		Title _____	
872'		Date _____	
1040'		18 SURVEYOR CERTIFICATION	
282'		I hereby certify that the well location shown on this plot was plotted from field notes of actual surveys made by me or under my supervision, and that the same is true and correct to the best of my belief.	
449'		Date of Survey _____	
1770'		Signature and Seal of Professional Surveyor: _____	
N 00-11-33 E 2642.1' (M)		REGISTERED PROFESSIONAL SURVEYOR 14827	
FD BC G.L.O. 1913		Certificate Number _____	
N 89-34-13 E		CALC'D CORNER	
5286.1' (M)			

*NEW LOCATION*

LAT: 36°36'07" N.  
LONG: 107°57'38" W.

DAVID A. JOHNSON  
2002

DISTRICT I  
1625 N. French Dr., Hobbs, N.M. 88240

DISTRICT II  
811 South First, Artesia, N.M. 88210

DISTRICT III  
1000 Rio Brazos Rd., Aztec, N.M. 87410

DISTRICT IV  
2040 South Pacheco, Santa Fe, NM 87505

State of New Mexico  
Energy, Minerals & Natural Resources Department

Form C-102  
Revised August 15, 2000

OIL CONSERVATION DIVISION

2040 South Pacheco  
Santa Fe, NM 87505

Submit to Appropriate District Office  
State Lease - 4 Copies  
Fee Lease - 3 Copies

☐ AMENDED REPORT

WELL LOCATION AND ACREAGE DEDICATION PLAT

1 API Number		2 Pool Code		3 Pool Name	
4 Property Code		5 Property Name E. H. PIPKIN			6 Well Number 8R
7 GRID No.		8 Operator Name XTO ENERGY INC.			9 Elevation 5937'

10 Surface Location

UL or lot no.	Section	Township	Range	Lot Idn	Feet from the	North/South line	Feet from the	East/West line	County
L	1	27-N	11-W		1845	SOUTH	1085'	WEST	SAN JUAN

11 Bottom Hole Location If Different From Surface

UL or lot no.	Section	Township	Range	Lot Idn	Feet from the	North/South line	Feet from the	East/West line	County

12 Dedicated Acres		13 Joint or Infill		14 Consolidation Code		15 Order No.	

NO ALLOWABLE WILL BE ASSIGNED TO THIS COMPLETION UNTIL ALL INTERESTS HAVE BEEN CONSOLIDATED  
OR A NON-STANDARD UNIT HAS BEEN APPROVED BY THE DIVISION

16		17 OPERATOR CERTIFICATION	
LOT 4		I hereby certify that the information contained herein is true and complete to the best of my knowledge and belief	
LOT 3		Signature _____	
LOT 2		Printed Name _____	
LOT 1		Title _____	
FD BC G.L.O. 1918		Date _____	
1085'		18 SURVEYOR CERTIFICATION	
237'		I hereby certify that the well location shown on this plat was plotted from field notes of actual surveys made by me or under my supervision and that the same is true and correct to the best of my belief	
524'		Date of Survey _____	
N 00-11-33 E 2642.1' (M)		Signature and Seal of Professional Surveyor _____	
1845'		8894	
FD BC G.L.O. 1918		Certificate Number	
N 89-34-13 E		5286.1' (M)	
CALC'D CORNER			

**Stogner, Michael**

221029677

---

**From:** Stogner, Michael  
**Sent:** Monday, July 29, 2002 4:29 PM  
**To:** George A. Cox (E-mail)  
**Subject:** NSL-4676

I received your application dated July 24, 2002 to amend the proposed location for the E. H. Pipkin Well No. 8-R, approved by Div. Adm. Order NSL-4676.

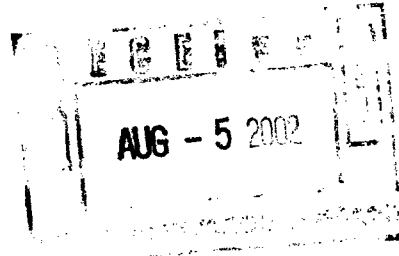
Why did the BLM request XTO to move this location 75' south and 45' west. Spare no details.



August 2, 2002

**FEDERAL EXPRESS:**

Mr. Michael E. Stogner  
New Mexico Oil Conservation Division  
1220 S. Saint Francis Dr.  
Santa Fe, New Mexico 87504



RE: Request to Amend Unorthodox Location Administrative Order NSL-4676  
XTO Energy Inc.'s E.H. Pipkin #8R Well  
Amended Location of 1,770' FSL and 1,040' FWL (NW/4 SW/4)  
Unit L, Section 1, T27N-R11W  
San Juan County, New Mexico  
Kutz-Gallup Pool

Dear Mr. Stogner:

You requested in your email of July 29, 2002 that XTO Energy Inc. explain in detail why the BLM requested that we move our original location and additional 75' South and 45' West of where we planned to drill. The major issues with the BLM were topographical impact and water run-off issues.

On the original location, the pit side of the wellpad was in cut and ranged from 11.8' to 4.5'. This amount of cut is only to the working surface of the well pad. The pit itself is an additional 10' of cut below this. The total cut required to the bottom of the pit is 21'. The BLM does not like to see that much cut because of the amount of dirt that has to be removed in order to obtain the proper slope (BLM stipulations require a 3:1 or 4:1 slope to depth ratio). To be able to obtain a cut along the pit side of the location, the construction zone would have to start 63' to 84' away from the edge of the location. The new wellpad location has some of the pit being constructed in fill (this reduces the amount of construction zone needed). The original location required 300' of new road access while the new location requires no new road construction. I am enclosing both the original and revised C-102 and topographic maps to reflect the changes as detailed above.

Should you need any additional information please feel free to contact me at (817) 885-2454.

Sincerely,  
XTO ENERGY INC.

George A. Cox, CPL  
Landman  
Enclosures

DISTRICT I  
1625 N. French Dr., Hobbs, N.M. 88240

State of New Mexico  
Energy, Minerals & Natural Resources Department

Form C-102  
Revised August 15, 2000

DISTRICT II  
811 South First, Artesia, N.M. 88210

DISTRICT III  
1000 Rio Brazos Rd., Aztec, N.M. 87410

DISTRICT IV  
2040 South Pacheco, Santa Fe, NM 87505

OIL CONSERVATION DIVISION

2040 South Pacheco  
Santa Fe, NM 87505

Submit to Appropriate District Office  
State Lease - 4 Copies  
Fee Lease - 3 Copies

☐ AMENDED REPORT

WELL LOCATION AND ACREAGE DEDICATION PLAT

<sup>1</sup> API Number	<sup>2</sup> Pool Code	<sup>3</sup> Pool Name
<sup>4</sup> Property Code	<sup>5</sup> Property Name E. H. PIPKIN	<sup>6</sup> Well Number 8R
<sup>7</sup> OGRID No.	<sup>8</sup> Operator Name XTO ENERGY INC.	<sup>9</sup> Elevation 5937'

<sup>10</sup> Surface Location

UL or lot no.	Section	Township	Range	Lot Idn	Feet from the	North/South line	Feet from the	East/West line	County
L	1	27-N	11-W		1845	SOUTH	1085'	WEST	SAN JUAN

<sup>11</sup> Bottom Hole Location If Different From Surface

UL or lot no.	Section	Township	Range	Lot Idn	Feet from the	North/South line	Feet from the	East/West line	County
---------------	---------	----------	-------	---------	---------------	------------------	---------------	----------------	--------

<sup>12</sup> Dedicated Acres	<sup>13</sup> Joint or Infill	<sup>14</sup> Consolidation Code	<sup>15</sup> Order No.
-------------------------------	-------------------------------	----------------------------------	-------------------------

NO ALLOWABLE WILL BE ASSIGNED TO THIS COMPLETION UNTIL ALL INTERESTS HAVE BEEN CONSOLIDATED  
OR A NON-STANDARD UNIT HAS BEEN APPROVED BY THE DIVISION

16	LOT 4	LOT 3	LOT 2	LOT 1
ORIGINAL LOCATION				
REVISED DO NOT USE				
FD BC G.L.O. 1918	1085'	797'	237'	524'
N 00-11-33 E 2642.1' (M)	1845'	LAT: 36°36'07" N. LONG: 107°57'38" W.		
FD BC G.L.O. 1918	N 89-34-13 E	5286.1' (M)	CALC'D CORNER	

17 OPERATOR CERTIFICATION

I hereby certify that the information contained herein  
is true and complete to the best of my knowledge and  
belief

Signature

Printed Name

Title

Date

18 SURVEYOR CERTIFICATION

I hereby certify that the well location shown on this plat  
was plotted from field notes of actual surveys made by  
me or under my supervision and that the same is true  
and correct to the best of my belief

Date of Survey

Signature and Seal of Professional Surveyor

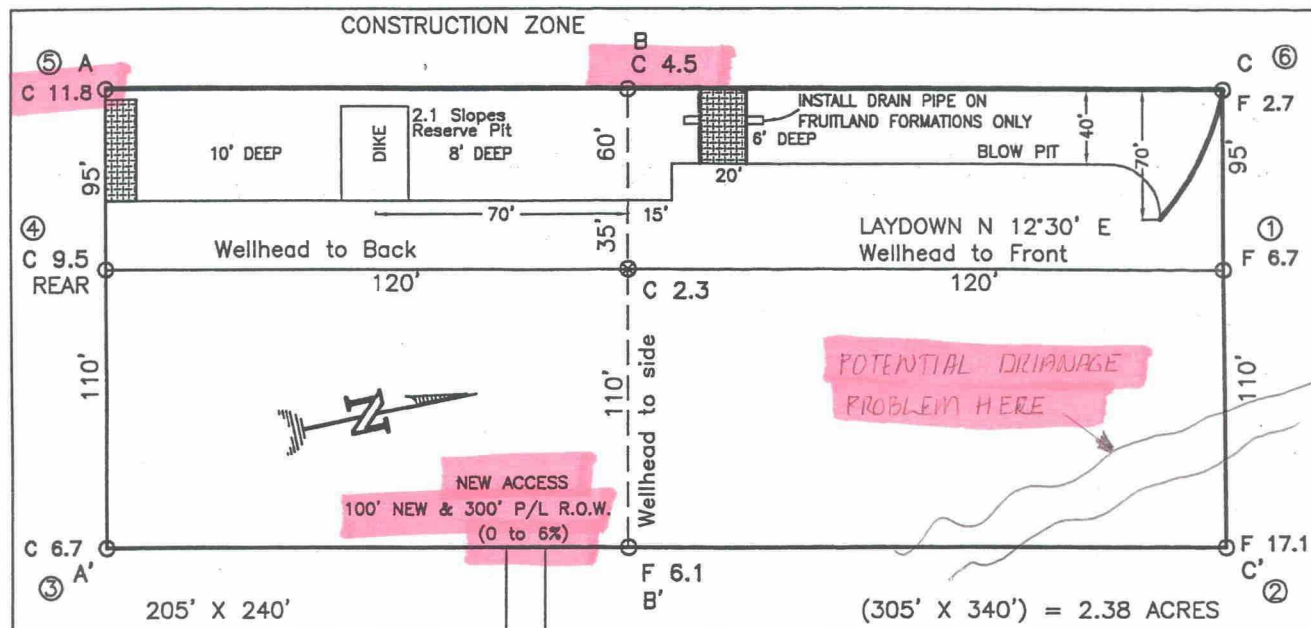
8894

Certificate Number



XTO ENERGY INC.  
 E. H. PIPKIN No.8R, 1845' FSL 1085' FWL  
 SECTION 1, T27N, R11W, N.M.P.M., SAN JUAN COUNTY, N. M.  
 GROUND ELEVATION: 5937, DATE: OCTOBER 12, 2001

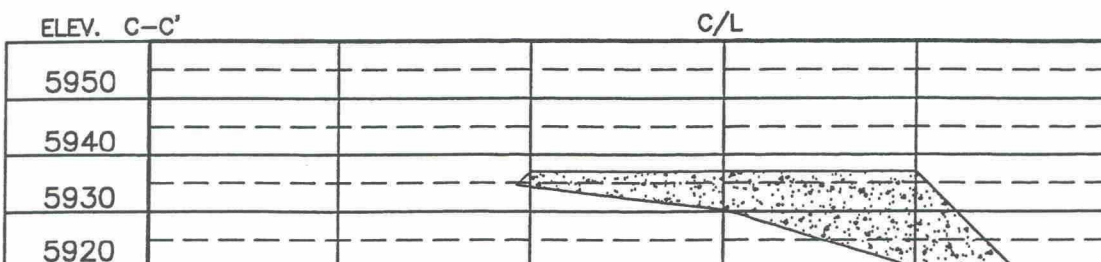
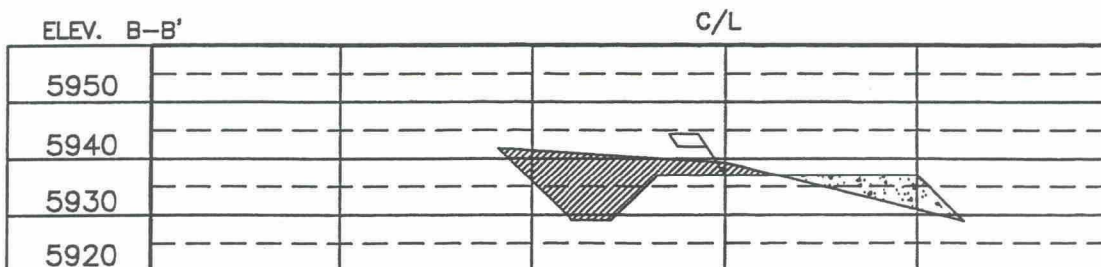
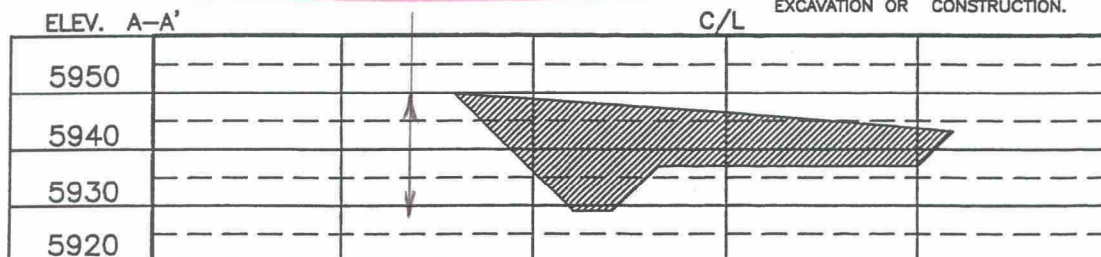
LAT. = 36°36'07" N  
 LONG. = 107°57'38" W



RESERVE PIT DIKE: TO BE 8' ABOVE DEEP SIDE (OVERFLOW - 3' WIDE AND 1' ABOVE SHALLOW SIDE).  
 BLOW PIT: OVERFLOW PIPE HALFWAY BETWEEN TOP AND BOTTOM AND TO EXTEND OVER PLASTIC LINER AND INTO BLOW PIT.

21' OF TOTAL CUT REQUIRED

NOTE: DAGGETT ENTERPRISES, INC. IS NOT LIABLE FOR UNDERGROUND UTILITIES OR PIPELINES. NEW MEXICO ONE CALL TO BE NOTIFIED 48 HOURS PRIOR TO EXCAVATION OR CONSTRUCTION.



NOTE: CONTRACTOR SHOULD CALL ONE-CALL FOR LOCATION OF ANY MARKED OR UNMARKED BURIED PIPELINES OR CABLES ON WELL PAD AND OR ACCESS ROAD AT LEAST TWO (2) WORKING DAYS PRIOR TO CONSTRUCTION.

DRAWN BY: B.L. ROW#: CR079 CADFILE: CR079CF8 DATE: 11/15/01

**REVISED**  
**DO NOT USE**

Daggett Enterprises, Inc.  
 Surveying and Oil Field Services  
 P. O. Box 15068 Farmington, NM 87401  
 Phone (505) 328-1772 Fax (505) 328-6019



XTO ENERGY INC.

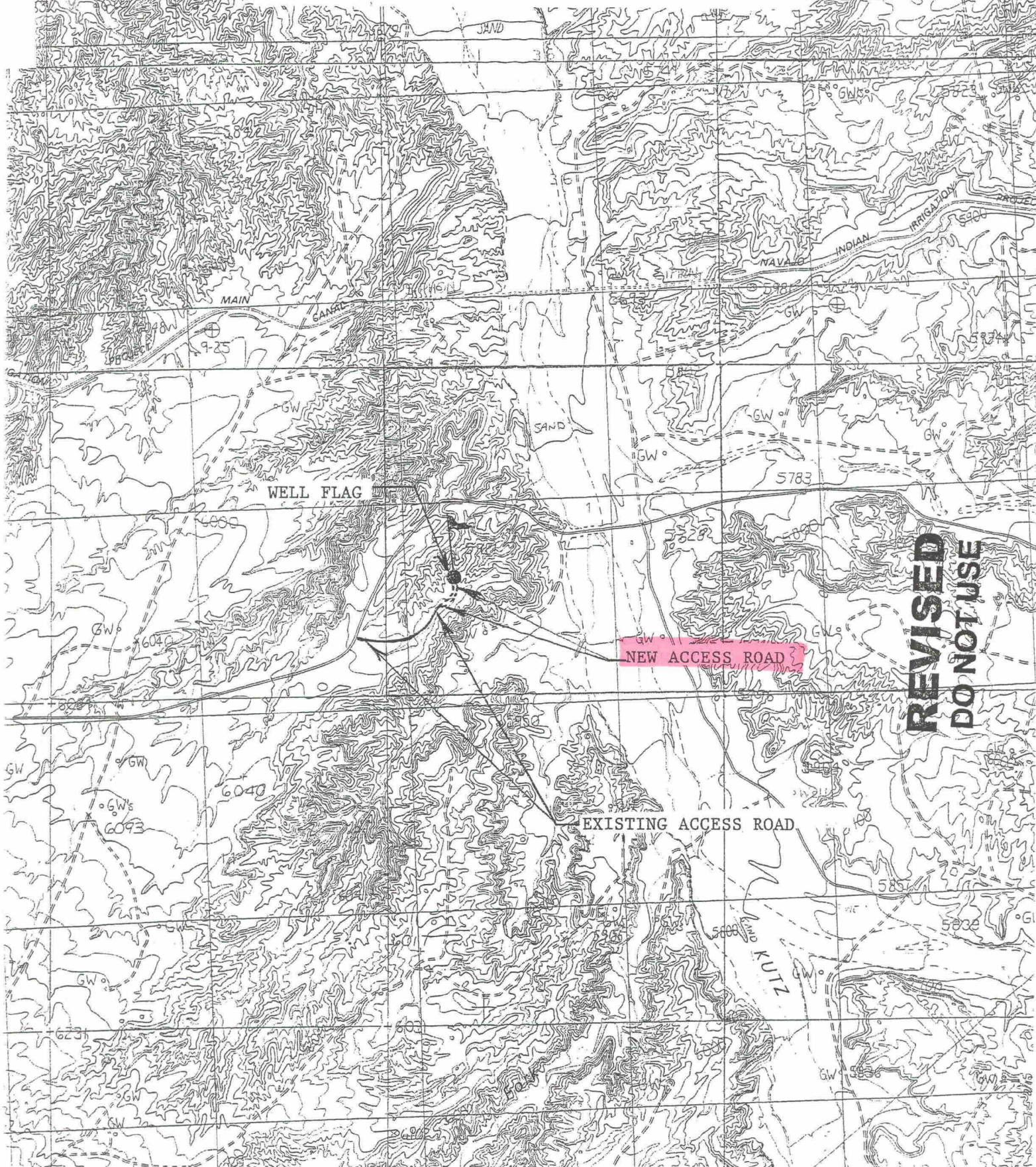
E. H. PIPKIN No. 8R

SW/4 SEC. 1, T-27-N, R-11-W, N.M.P.M.,

SAN JUAN COUNTY, NEW MEXICO

1845' FSL

1085' FWL



**REVISED  
DO NOT USE**



DISTRICT I  
1625 N. French Dr., Hobbs, N.M. 88240

DISTRICT II  
811 South First, Artesia, N.M. 88210

DISTRICT III  
1000 Rio Brazos Rd., Aztec, N.M. 87410

DISTRICT IV  
2040 South Pacheco, Santa Fe, NM 87505

State of New Mexico  
Energy, Minerals & Natural Resources Department

Form C-102  
Revised August 15, 2000

OIL CONSERVATION DIVISION

2040 South Pacheco  
Santa Fe, NM 87505

Submit to Appropriate District Office  
State Lease - 4 Copies  
Fee Lease - 3 Copies

☐ AMENDED REPORT

WELL LOCATION AND ACREAGE DEDICATION PLAT

<sup>1</sup> API Number	<sup>2</sup> Pool Code	<sup>3</sup> Pool Name
<sup>4</sup> Property Code	<sup>5</sup> Property Name E. H. PIPKIN	<sup>6</sup> Well Number 8R
<sup>7</sup> GRID No.	<sup>8</sup> Operator Name XTO ENERGY INC.	<sup>9</sup> Elevation 5944'

<sup>10</sup> Surface Location

UL or lot no.	Section	Township	Range	Lot Idn	Feet from the	North/South line	Feet from the	East/West line	County
L	1	27-N	11-W		1770	SOUTH	1040'	WEST	SAN JUAN

<sup>11</sup> Bottom Hole Location If Different From Surface

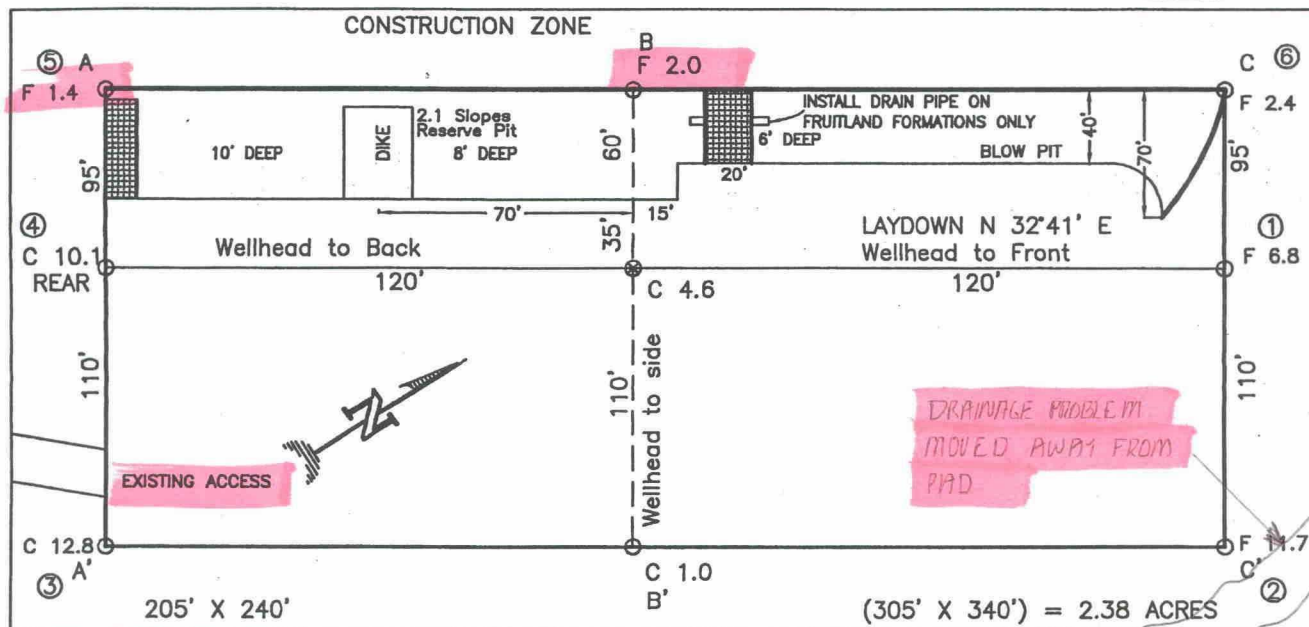
UL or lot no.	Section	Township	Range	Lot Idn	Feet from the	North/South line	Feet from the	East/West line	County
<sup>12</sup> Dedicated Acres					<sup>13</sup> Joint or Infill		<sup>14</sup> Consolidation Code		<sup>15</sup> Order No.

NO ALLOWABLE WILL BE ASSIGNED TO THIS COMPLETION UNTIL ALL INTERESTS HAVE BEEN CONSOLIDATED  
OR A NON-STANDARD UNIT HAS BEEN APPROVED BY THE DIVISION

16	LOT 4	LOT 3	LOT 2	LOT 1
NEW LOCATION				
FD BC G.L.O. 1913	1040'	872'	282'	LAT: 36°36'07" N. LONG: 107°57'38" W.
N 00-11-33 E 2642.1' (M)	1770'	449'		
FD BC G.L.O. 1913	N 89-34-13 E	5286.1' (M)	CALC'D CORNER	
17 OPERATOR CERTIFICATION I hereby certify that the information contained herein is true and complete to the best of my knowledge and belief  Signature _____ Printed Name _____ Title _____ Date _____				
18 SURVEYOR CERTIFICATION I hereby certify that the well location shown on this plat was plotted from field notes of actual surveys made by me or under my supervision, and that the same is true and correct to the best of my belief.  Date of Survey _____ Signature and Seal of Professional Surveyor: _____ 14827 14827 Certificate Number _____				

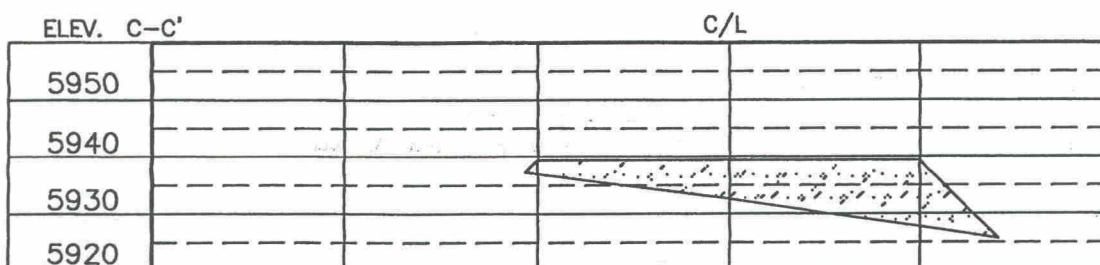
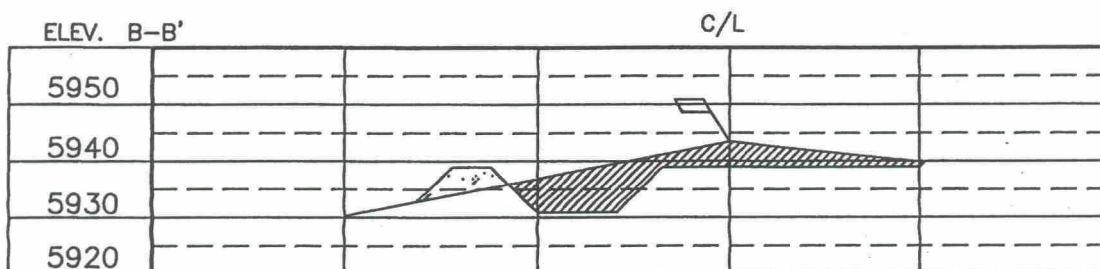
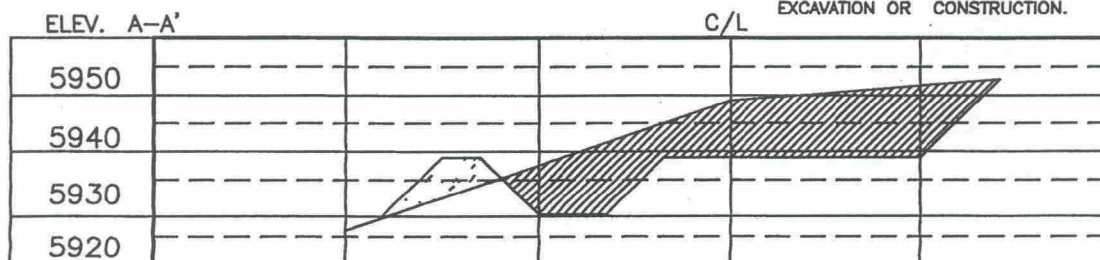
XTO ENERGY INC.  
 E. H. PIPKIN No.8R, 1/70' FSL 1040' FWL  
 SECTION 1, T27N, R11W, N.M.P.M., SAN JUAN COUNTY, N. M.  
 GROUND ELEVATION: 5944, DATE: MAY 23, 2002

LAT. = 36°36'07" N  
 LONG. = 107°57'38" W



RESERVE PIT DIKE: TO BE 8' ABOVE DEEP SIDE (OVERFLOW - 3' WIDE AND 1' ABOVE SHALLOW SIDE).  
 BLOW PIT: OVERFLOW PIPE HALFWAY BETWEEN TOP AND BOTTOM AND TO EXTEND OVER PLASTIC LINER AND INTO BLOW PIT.

NOTE: DAGGETT ENTERPRISES, INC. IS NOT LIABLE FOR UNDERGROUND UTILITIES OR PIPELINES. NEW MEXICO ONE CALL TO BE NOTIFIED 48 HOURS PRIOR TO EXCAVATION OR CONSTRUCTION.



NOTE: CONTRACTOR SHOULD CALL ONE-CALL FOR LOCATION OF ANY MARKED OR UNMARKED BURIED PIPELINES OR CABLES ON WELL PAD AND OR ACCESS ROAD AT LEAST TWO (2) WORKING DAYS PRIOR TO CONSTRUCTION.

DRAWN BY: B.L. ROW#: CR079 CADFILE: CR079CF8 DATE: 11/15/01

Daggett Enterprises, Inc.  
 Surveying and Oil Field Services  
 P. O. Box 15068 Farmington, NM 87401  
 Phone (505) 326-1772 Fax (505) 326-6019

REVISION: RELOCATION BY: A.G. DATE: 5/28/02



XTO ENERGY INC.  
E. H. PIPKIN No. 8R  
SW/4 SEC. 1, T-27-N, R-11-W, N.M.P.M.,  
SAN JUAN COUNTY, NEW MEXICO  
1770' FSL 1040' FWL

