

# SHELL OIL COMPANY

PETROLEUM BUILDING

P.O. BOX 1509

MIDLAND, TEXAS 79701

December 13, 1968

Subject: Non-Standard Gas Proration Unit  
Argo No. 2  
Blinebry Gas Pool  
Lea County, New Mexico

New Mexico Oil Conservation Commission  
P. O. Box 2088  
Santa Fe, New Mexico 87501

Gentlemen:

We respectfully request your approval for a 40-acre non-standard gas proration unit in the Blinebry Gas Pool consisting of Unit L of Section 15, T-21-S, R-37-E. This unit is to be dedicated to Shell's Argo No. 2, located 1980 feet from the south line and 660 feet from the west line of Section 15.

Argo No. 2 was classified as a Blinebry oil well and now is to be reclassified as a gas well, effective December 1, 1968.

In view of the facts presented, it is requested that the Commission approve this application for a non-standard gas proration unit.

Copies of this application are being sent by certified mail to all offset operators.

Yours very truly,

*S. M. Paine*  
S. M. Paine, Manager  
Production Department - West  
Midland Division

DC:AO

cc - New Mexico Oil Conservation Commission  
Hobbs, New Mexico 88240

Copies sent by Certified Mail to:

Marathon Oil Company  
Box 552  
Midland, Texas 79701

Gulf Oil Corporation  
Box 1150  
Midland, Texas 79701

Sunray DX Oil Company  
1101 Wilco Building  
Midland, Texas 79701

Cities Service Oil Company  
800 Vaughn Building  
Midland, Texas 79701

Amerada Petroleum Corporation  
Box 312  
Midland, Texas 79701

*NSP 803  
issue 1-15-69*

DEC 16 AM 9 28

NEW MEXICO OIL CONSERVATION COMMISSION  
WELL LOCATION AND ACREAGE DEDICATION PLAT

Form C-102  
Supersedes C-128  
Effective 1-1-65

All distances must be from the outer boundaries of the Section.

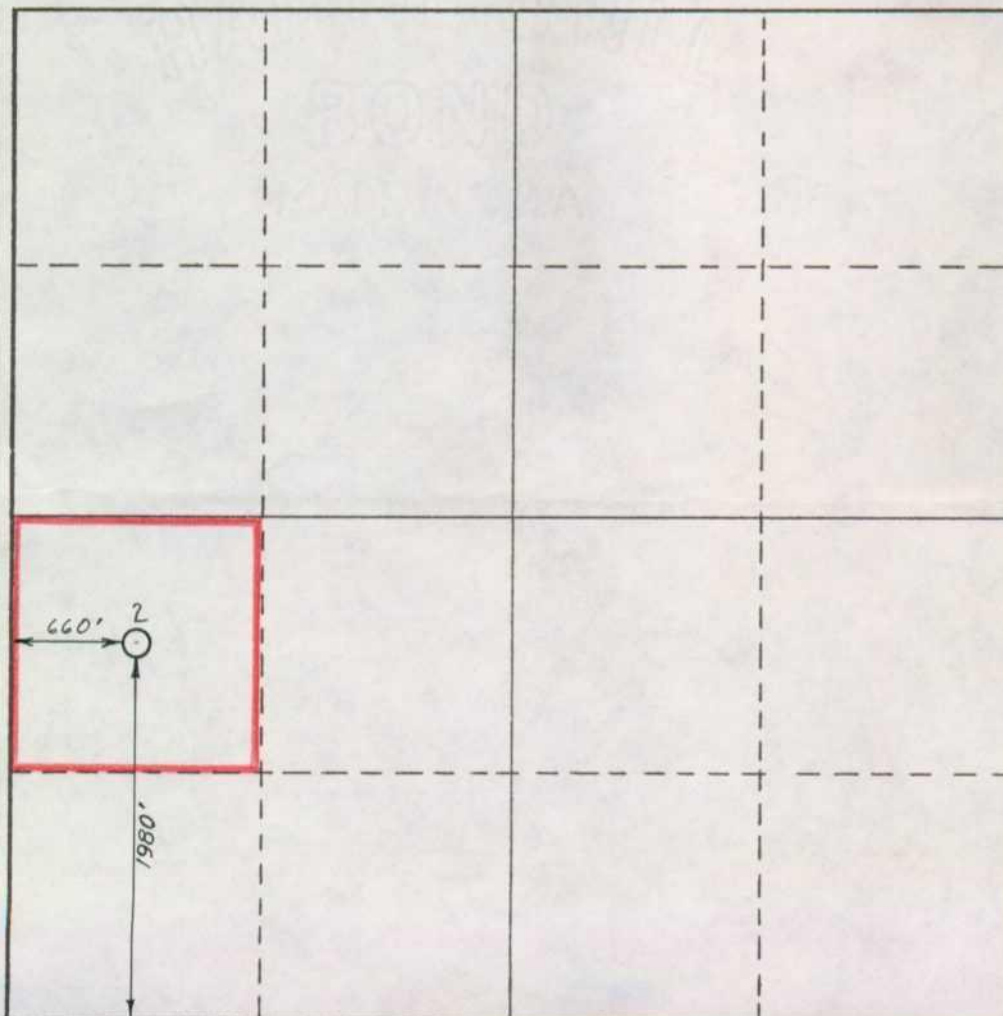
Operator Shell Oil Company			Lease Argo		Well No. 2
Unit Letter L	Section 15	Township 21-S	Range 37-E	County Lea	
Actual Footage Location of Well: 1980 feet from the south line and 660 feet from the west line					
Ground Level Elev: 3454	Producing Formation Blinebry		Pool Blinebry Gas		Dedicated Acreage: 40 Acres

1. Outline the acreage dedicated to the subject well by colored pencil or hachure marks on the plat below.
2. If more than one lease is dedicated to the well, outline each and identify the ownership thereof (both as to working interest and royalty).
3. If more than one lease of different ownership is dedicated to the well, have the interests of all owners been consolidated by communitization, unitization, force-pooling, etc?

☐ Yes ☐ No If answer is "yes," type of consolidation \_\_\_\_\_

If answer is "no," list the owners and tract descriptions which have actually been consolidated. (Use reverse side of this form if necessary.) \_\_\_\_\_

No allowable will be assigned to the well until all interests have been consolidated (by communitization, unitization, forced-pooling, or otherwise) or until a non-standard unit, eliminating such interests, has been approved by the Commission.



CERTIFICATION

I hereby certify that the information contained herein is true and complete to the best of my knowledge and belief.

*N.L. Tomberlin* N.L. Tomberlin  
Name  
Acting Division Production Supt.  
Position  
December 13, 1968  
Date  
Company  
Shell Oil Company  
Date

I hereby certify that the well location shown on this plat was plotted from field notes of actual surveys made by me or under my supervision, and that the same is true and correct to the best of my knowledge and belief.

Date Surveyed

T. J. Chapman, Jr., Chief Surveyor  
Shell Oil Company

0 330 660 990 1320 1650 1980 2310 2640 2970 3300 3630 3960 4290 4620 4950 5280 5610 5940 6270 6600