

# Mobil Oil Corporation

NINE GREENWAY PLAZA-SUITE 2700  
HOUSTON, TEXAS 77046

October 3, 1979

State of New Mexico  
Energy & Minerals Department  
Oil Conservation Division  
P.O. Box 2088  
Santa Fe, NM 87501

Attn: Mr. Joe A. Ramey

7.01  
NON-STANDARD PRORATION UNIT  
MOBIL OIL CORPORATION'S  
JILLSON FEDERAL, WELL NO. 3  
WEST LINDRITH GALLUP - DAKOTA OIL POOL  
RIO ARriba COUNTY, NEW MEXICO

Gentlemen:

Mobil Oil Corporation respectfully requests that a non-standard proration <sup>unit</sup> be approved for the Jillson Federal Well No. 3. The unorthodox size of this proration unit is due to a variation in the legal subdivision of the United States Public Land Surveys. This proposed unit contains 191.27 acres of land described as the NE/4 and Lots 1 and 2, Sec. 7, T24N, R3W Rio Arriba County, New Mexico. Proposed Well No. 3 is to be located 850 feet from the west line and ~~797~~ <sup>1840</sup> feet from the ~~south~~ <sup>NORTH</sup> line of Section 7.

It is requested that this non-standard unit be approved administratively under the provisions of Rule 3 of the West Lindrith Gallup - Dakota Oil Pool Rules. If the Commission determines that this matter cannot be disposed of administratively, please set it for hearing at the earliest convenient date.

A copy of this letter is being sent, by certified mail, to each operator offsetting this proposed proration unit as their notice of this application and request for their waiver. These offset operators are:

RECEIVED  
OCT 11 1979  
OIL CONSERVATION DIVISION  
SANTA FE

Cotton Petroleum Corporation  
2121 South Columbia  
Suite 600  
Tulsa, OK 74114

Felix Hickman, Jr.  
313 Washington, S.E.  
Albuquerque, NM 87108

A copy of Form C-102 "Well Location and Acreage Allocation Plat" is enclosed.

Very truly yours,

*J. A. Morris*  
J. A. Morris

ADBond/jbr  
Attachment

cc: Offset Operators  
E&M Dept. Dist. Office - Aztec  
USGS - Durango

NEW MEXICO OIL CONSERVATION COMMISSION  
WELL LOCATION AND ACREAGE DEDICATION PLAT

Form C-102  
Supersedes C-128  
Effective 1-1-65

All distances must be from the outer boundaries of the Section.

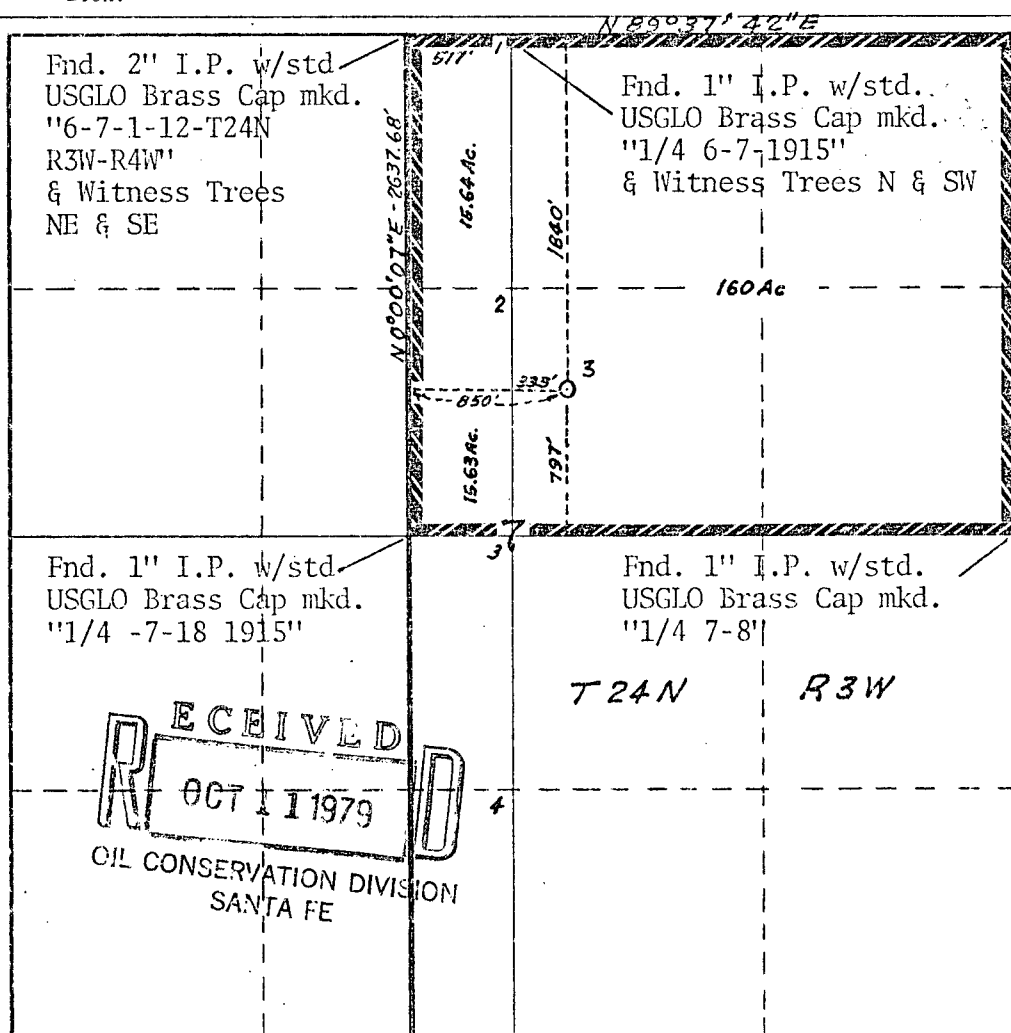
Operator <b>MOBIL OIL CORPORATION</b>			Lease <b>Jillson Federal</b>		Well No. <b>3</b>
Unit Letter	Section <b>7</b>	Township <b>24N</b>	Range <b>3W</b>	County <b>Rio Arriba</b>	
Actual Postage Location of Well: <div style="display: flex; justify-content: space-between;"> <span>1840 feet from the</span> <span>North line and</span> <span>850 feet from the</span> <span>West line</span> </div>					
Ground Level Elev. <b>6886'</b>	Producing Formation <b>Gallup - Dakota</b>		Pool <b>West Lindrith Gallup-Dakota Oil</b>		Dedicated Acreage: <b>191.27</b> Acres

1. Outline the acreage dedicated to the subject well by colored pencil or hachure marks on the plat below.
2. If more than one lease is dedicated to the well, outline each and identify the ownership thereof (both as to working interest and royalty).
3. If more than one lease of different ownership is dedicated to the well, have the interests of all owners been consolidated by communitization, unitization, force-pooling, etc?

☐ Yes    ☐ No    If answer is "yes," type of consolidation \_\_\_\_\_

If answer is "no," list the owners and tract descriptions which have actually been consolidated. (Use reverse side of this form if necessary.) \_\_\_\_\_

No allowable will be assigned to the well until all interests have been consolidated (by communitization, unitization, forced-pooling, or otherwise) or until a non-standard unit, eliminating such interests, has been approved by the Commission.



CERTIFICATION

I hereby certify that the information contained herein is true and complete to the best of my knowledge and belief.

*A. D. Bond*

Name  
**A. D. Bond**

Position  
**Regulatory Engineering Coordinator II**

Company  
**Mobil Oil Corporation**

Date

I hereby certify that the well location shown on this plat was plotted from field notes of actual surveys made by me or under my supervision, and that the same is true and correct to the best of my knowledge and belief.

*H. A. Carson, Jr.*

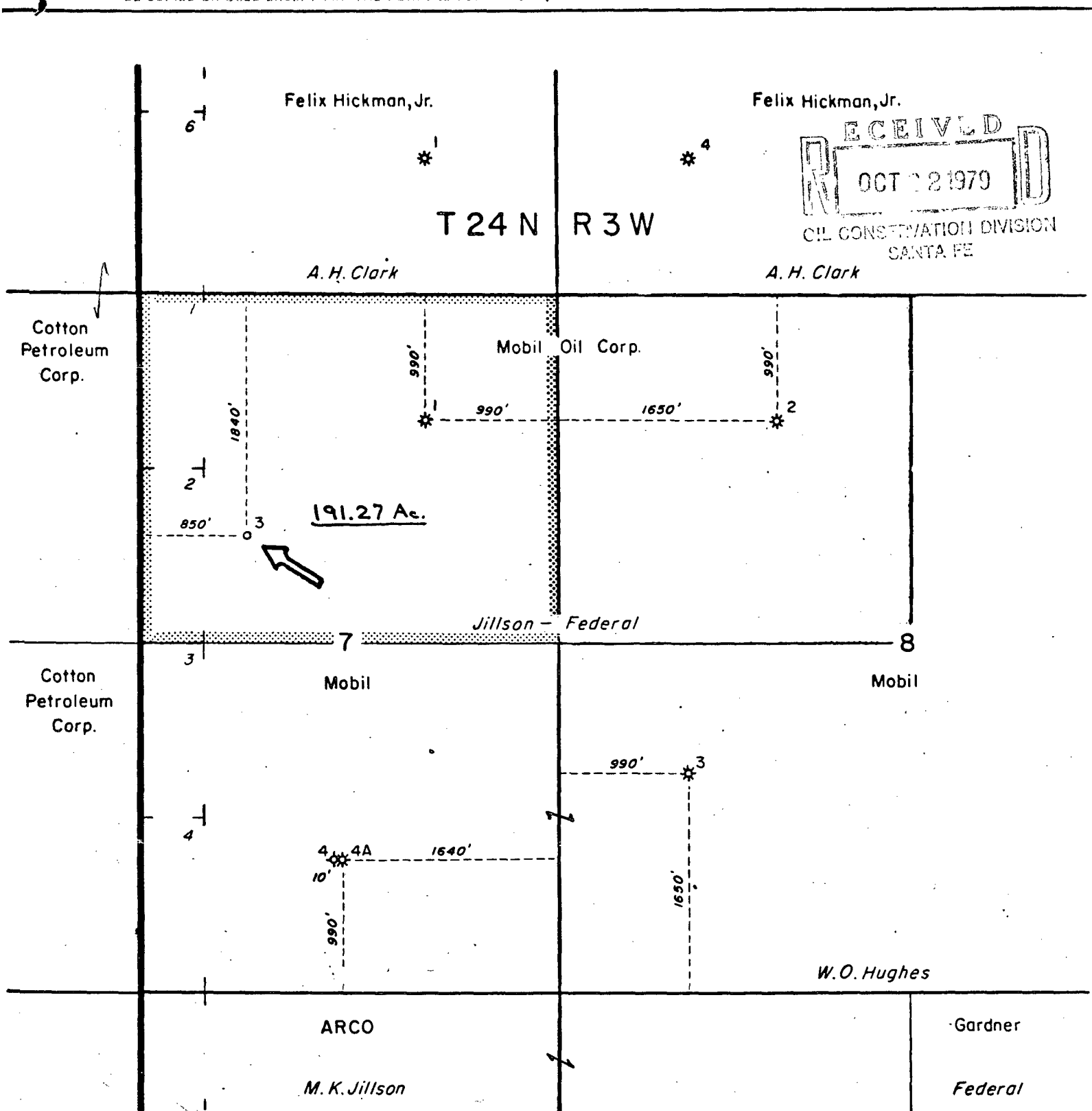
Date Surveyed  
**September 13, 1979**

Registered Professional Engineer and/or Land Surveyor

**H. A. Carson, Jr.**

Certificate No.  
**5063**

**RECEIVED**  
**OCT 11 1979**  
**OIL CONSERVATION DIVISION**  
**SANTA FE**



RECEIVED  
OCT 22 1979  
OIL CONSERVATION DIVISION  
SANTA FE

Reserve \_\_\_\_\_ Permit Depth \_\_\_\_\_

Special Instructions \_\_\_\_\_

\_\_\_\_\_

\_\_\_\_\_

\_\_\_\_\_

THE STATE OF TEXAS  
COUNTY OF HARRIS

I hereby certify that this plat truly represents conditions as they actually exist on this lease; that said plat which is drawn to the scale indicated hereon, is to the best of my knowledge true and correct; that it accurately shows said lease with all wells on same; that number and locations of said wells are as indicated hereon; and that this plat correctly reflects all pertinent and required data.

**Mobil Oil Corporation**  
Houston E&P Division

LEASE Jillson - Federal  
WELL NO. 3 DATE 10/16 1979  
DIVISION Houston LEASE NO. NM-24  
TOTAL ACRES IN LEASE 351.27 ACRES COVERED BY PLAT \_\_\_\_\_  
DESCRIPTION N 1/2 of Sec. 7 & NW 1/4 of Sec. 8  
T24N-R3W

Rio Arriba County, New Mexico

DRAWN <u>T. Ray</u>	DATE <u>10-5-79</u>	FIELD <u>West Lindrith</u>
SCALE <u>1"=1000'</u>	FILE NO. <u>97</u>	<u>Gallup - Dakota</u>