



NSP - 1160
Atoka & Morrow formations
Rule 104 D II
Immediate

lots 3 thru 6 and
11 thru 14.

October 24, 1979

Mr. Joe D. Ramey, Director
Oil Conservation Division
P. O. Box 2088
Santa Fe, New Mexico 87501

RE: Mesa Petroleum Co.
Derrick Federal Com #1
2160' FNL & 1980' FWL
Lot 11, Sec 5, T16S, R28E
Eddy County, New Mexico

Dear Mr. Ramey:

Application is hereby made for an administrative approval of a 271-acre non-standard gas proration unit under Rule 104DII for the above captioned well. Application is necessitated by the unorthodox survey lines pertaining to the north third of subject section, namely Lots 1 thru 4 which only contain 15.05 to 16.16 acres as outlined in the attached diagram. It should be noted that this location may or may not be orthodox due to these survey anomalies.

All off-set operators to the proposed unit have offered no objections as attested by the enclosed letters-of-consent and as identified by the attached land map and location plat (C-102).

Expeditious handling of this request and issuance of appropriate administrative order is appreciated.

Yours truly,

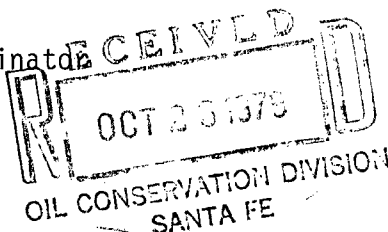
R. E. Mathis

R. E. Mathis
Regulatory Coordinator

REM/mp

Attch (2)

Enc1 (2)



**NEW MEXICO OIL CONSERVATION COMMISSION
WELL LOCATION AND ACREAGE DEDICATION PLAT**

Form C-102
Supersedes C-128
Effective 1-1-65

All distances must be from the outer boundaries of the Section

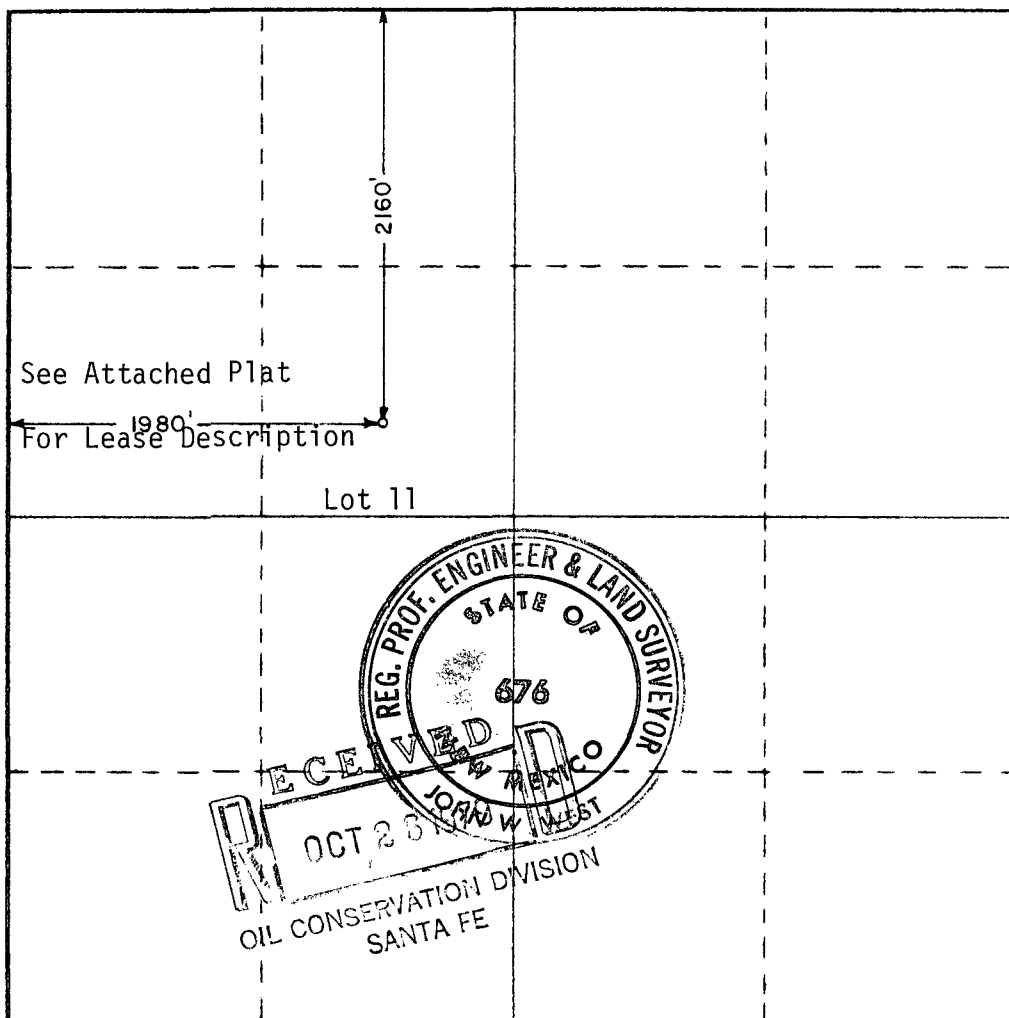
Operator Mesa Petroleum Co.			Lease Derrick Federal Comm.		Well No. 1
Unit Letter K	Section 5	Township 16 South	Range 28 East	County Eddy	
Actual Footage Location of Well: 2160 feet from the North line and 1980 feet from the West line					
Ground Level Elev. 3634.6	Producing Formation Atoka-Morrow		Pool Undesignated		Dedicated Acreage: 271 Acres

1. Outline the acreage dedicated to the subject well by colored pencil or hatchure marks on the plat below.
2. If more than one lease is dedicated to the well, outline each and identify the ownership thereof (both as to working interest and royalty).
3. If more than one lease of different ownership is dedicated to the well, have the interests of all owners been consolidated by communitization, unitization, force-pooling, etc?

☐ Yes ☒ No If answer is "yes," type of consolidation Communitization in process

If answer is "no," list the owners and tract descriptions which have actually been consolidated. (Use reverse side of this form if necessary.) _____

No allowable will be assigned to the well until all interests have been consolidated (by communitization, unitization, forced-pooling, or otherwise) or until a non-standard unit, eliminating such interests, has been approved by the Commission.



CERTIFICATION

I hereby certify that the information contained herein is true and complete to the best of my knowledge and belief.

Name
R. E. Mathis
Position
Regulatory Coordinator
Company
Mesa Petroleum Co.
Date

I hereby certify that the well location shown on this plat was plotted from field notes of actual surveys made by me or under my supervision and that the same is true and correct to the best of my knowledge and belief.

Date Surveyed
October 8, 1979
Registered Professional Engineer and/or Land Surveyor

Certificate No. **John W. West 676**
Ronald J. Eidson 3239

0 330 660 990 1320 1650 1980 2310 2640 2970 3300 3630 3960 4290 4620 4950 5280 5610 5940 6270 6600

MESA

R 27 E

35

AMOCO

36

T
15
S

GULF

6

DEPCO
NW 18100

4

15.05 AC.

5

16.16 AC.

6

15.25 AC.

7

15.25 AC.

8

15.25 AC.

9

15.25 AC.

10

15.25 AC.

11

15.25 AC.

12

15.25 AC.

13

15.25 AC.

14

15.25 AC.

15

15.25 AC.

16

15.25 AC.

17

15.25 AC.

18

15.25 AC.

19

15.25 AC.

20

15.25 AC.

21

15.25 AC.

22

15.25 AC.

23

15.25 AC.

24

15.25 AC.

25

15.25 AC.

26

15.25 AC.

27

15.25 AC.

28

15.25 AC.

29

15.25 AC.

30

15.25 AC.

31

15.25 AC.

32

15.25 AC.

33

15.25 AC.

34

15.25 AC.

35

15.25 AC.

36

15.25 AC.

37

15.25 AC.

38

15.25 AC.

39

15.25 AC.

40

15.25 AC.

41

15.25 AC.

42

15.25 AC.

43

15.25 AC.

44

15.25 AC.

45

15.25 AC.

46

15.25 AC.

47

15.25 AC.

48

15.25 AC.

49

15.25 AC.

50

15.25 AC.

51

15.25 AC.

52

15.25 AC.

53

15.25 AC.

54

15.25 AC.

55

15.25 AC.

56

15.25 AC.

57

15.25 AC.

58

15.25 AC.

59

15.25 AC.

60

15.25 AC.

61

15.25 AC.

62

15.25 AC.

63

15.25 AC.

64

15.25 AC.

65

15.25 AC.

66

15.25 AC.

67

15.25 AC.

68

15.25 AC.

69

15.25 AC.

70

15.25 AC.

71

15.25 AC.

72

15.25 AC.

73

15.25 AC.

74

15.25 AC.

75

15.25 AC.

76

15.25 AC.

77

15.25 AC.

78

15.25 AC.

79

15.25 AC.

80

15.25 AC.

81

15.25 AC.

82

15.25 AC.

83

15.25 AC.

84

15.25 AC.

85

15.25 AC.

86

15.25 AC.

87

15.25 AC.

88

15.25 AC.

89

15.25 AC.

90

15.25 AC.

91

15.25 AC.

92

15.25 AC.

93

15.25 AC.

94

15.25 AC.

95

15.25 AC.

96

15.25 AC.

97

15.25 AC.

98

15.25 AC.

99

15.25 AC.

100

15.25 AC.

101

15.25 AC.

102

15.25 AC.

103

15.25 AC.

104

15.25 AC.

105

15.25 AC.

106

15.25 AC.

107

15.25 AC.

108

15.25 AC.

109

15.25 AC.

110

15.25 AC.

111

15.25 AC.

112

15.25 AC.

113

15.25 AC.

114

15.25 AC.

115

15.25 AC.

116

15.25 AC.

117

15.25 AC.

118

15.25 AC.

119

15.25 AC.

120

15.25 AC.

121

15.25 AC.

122

15.25 AC.

123

15.25 AC.

124

15.25 AC.

125

15.25 AC.

126

15.25 AC.

127

15.25 AC.

128

15.25 AC.

129

15.25 AC.

130

15.25 AC.

131

15.25 AC.

132

15.25 AC.

133

15.25 AC.

134

15.25 AC.

135

15.25 AC.

136

15.25 AC.

137

15.25 AC.

138

15.25 AC.

139

15.25 AC.

140

15.25 AC.

141

15.25 AC.

142

15.25 AC.

143

15.25 AC.

144

15.25 AC.

145

15.25 AC.

146

15.25 AC.

147

15.25 AC.

148

15.25 AC.

149

15.25 AC.

150

15.25 AC.

151

15.25 AC.

152

15.25 AC.

153

15.25 AC.

154

15.25 AC.

155

15.25 AC.

156

15.25 AC.

157

15.25 AC.

158

15.25 AC.

159

15.25 AC.

160

15.25 AC.

161

15.25 AC.

162

15.25 AC.

163

15.25 AC.

164

15.25 AC.

165

15.25 AC.



Amoco Production Company

Houston Region
500 Jefferson Building
Post Office Box 3092
Houston, Texas 77001

J. R. Barnett
Regional Engineering
Manager

October 15, 1979

File: JCA-986.51NM-4058

Re: Application for Non-Standard Proration Unit
Mesa Petroleum Company
Derrick Federal Com #1
2160' FNL & 1980' FWL
Lot 11, Sec. 5, T16S, R28E
Eddy County, New Mexico

Mr. Joe D. Ramey
New Mexico Oil Conservation Commission
P. O. Box 2088
Santa Fe, NM 87501

Dear Mr. Ramey:

Mesa Petroleum Company intends to file for an administrative approval for a non-standard gas proration unit for the subject well. The location of this well is 2160' from the north and 1980' from the south end lines and 660' from the nearest side boundry and 330' from the section lines. 271.21 acres are dedicated to this well from the northwest part of section.

As an offset operator, Amoco Production Company has no objections to this non-standard proration well and hereby waive notice.

Yours very truly,

J. R. Barnett
mlc

MLC/rw

cc: Mesa Petroleum Company
Vaughn Building
Suite 1000
Midland, TX 79701



October 5, 1979

Gulf Oil Co.
P. O. Box 1150
Midland, Texas 79702

RE: Mesa Petroleum Co.
Derrick Federal Com #1
2160' FNL & 1980' FWL
Lot 11, Sec 5, T16S, R28E
Eddy County, New Mexico

Gentlemen:

Mesa Petroleum Co. intends to file for an administrative approval for a non-standard gas proration unit for subject captioned well. The well location itself may or may not be orthodox being 2160' from the north and 1980' from the south end lines and 660' from the nearest side boundary and 330' from section lines as far as can be determined as illustrated by the attached diagram. 271.21 acres are being dedicated to this well from the northwest part of the section due to the survey anomalies of lots 3, 4, 5, 6, 12, 11, 13 and 14.

It is requested that you signify having no objections to approval of the unit or location by signing this letter and returning same to Mesa Petroleum Co. in the envelope provided.

Thank you for your kind assistance.

Yours truly,

R. E. Mathis
Regulatory Coordinator

The undersigned has no objections to the proposal outlined above.

Gulf Oil Corp.

By: D. T. Berlin, Manager-Engineering

October 11, 1979
Date:

REM/mp

Attch
Encl