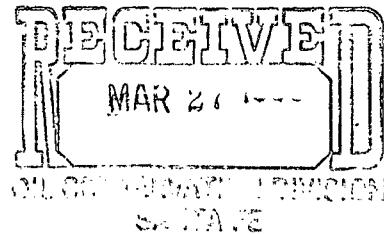


# MERIDIAN OIL

March 6, 1989



Mr. William LeMay  
New Mexico Oil Conservation Division  
Post Office Box 2088  
Santa Fe, New Mexico 87504

Dear Mr. LeMay:

This is a request for administrative approval for a non-standard proration unit for a gas well location in the Basin Fruitland Coal Pool.

Meridian Oil Inc.'s Howell C Com #301 is located at 1660' from the North line and 1320' from the West line of Section 18, T-30-N, R-8-W, San Juan County, New Mexico.

A copy of this application is being submitted to all offset operators by certified mail with a request that they furnish your Santa Fe office with a Waiver of Objection, and return one copy to this office.

A plat showing the proposed well location and configuration of Section 18, along with an ownership plat, are attached.

Sincerely yours,

A handwritten signature in cursive script, appearing to read "Peggy Bradfield".

Peggy Bradfield

encl.

## WAIVER

UNION OIL CO. OF CALIFORNIA hereby waives objection to Meridian Oil Inc.'s application for a non-standard proration unit for their Howell C Com #301 as proposed above.

By: Ron H. Anderson

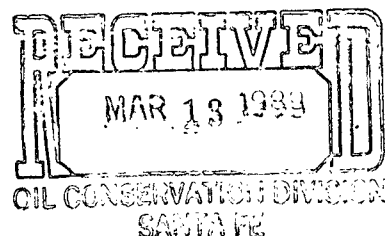
Date: 3/23/89

xc: Tenneco Oil  
Union Texas Petroleum  
Union Oil of California

*Sent copies to E. Bosch 3/13/89*

MERIDIAN OIL

March 6, 1989



Mr. William LeMay  
New Mexico Oil Conservation Division  
Post Office Box 2088  
Santa Fe, New Mexico 87504

Dear Mr. LeMay:

This is a request for administrative approval for a non-standard proration unit for a gas well location in the Basin Fruitland Coal Pool.

Meridian Oil Inc.'s Howell C Com #301 is located at 1660' from the North line and 1320' from the West line of Section 18, T-30-N, R-8-W, San Juan County, New Mexico.

A copy of this application is being submitted to all offset operators by certified mail with a request that they furnish your Santa Fe office with a Waiver of Objection, and return one copy to this office.

A plat showing the proposed well location and configuration of Section 18, along with an ownership plat, are attached.

Sincerely yours,

A handwritten signature in cursive script, appearing to read "Peggy Bradfield".

Peggy Bradfield

encl.

WAIVER

\_\_\_\_\_ hereby waives objection to Meridian Oil Inc.'s application for a non-standard proration unit for their Howell C Com #301 as proposed above.

By: \_\_\_\_\_

Date: \_\_\_\_\_

xc: Tenneco Oil  
Union Texas Petroleum  
Union Oil of California

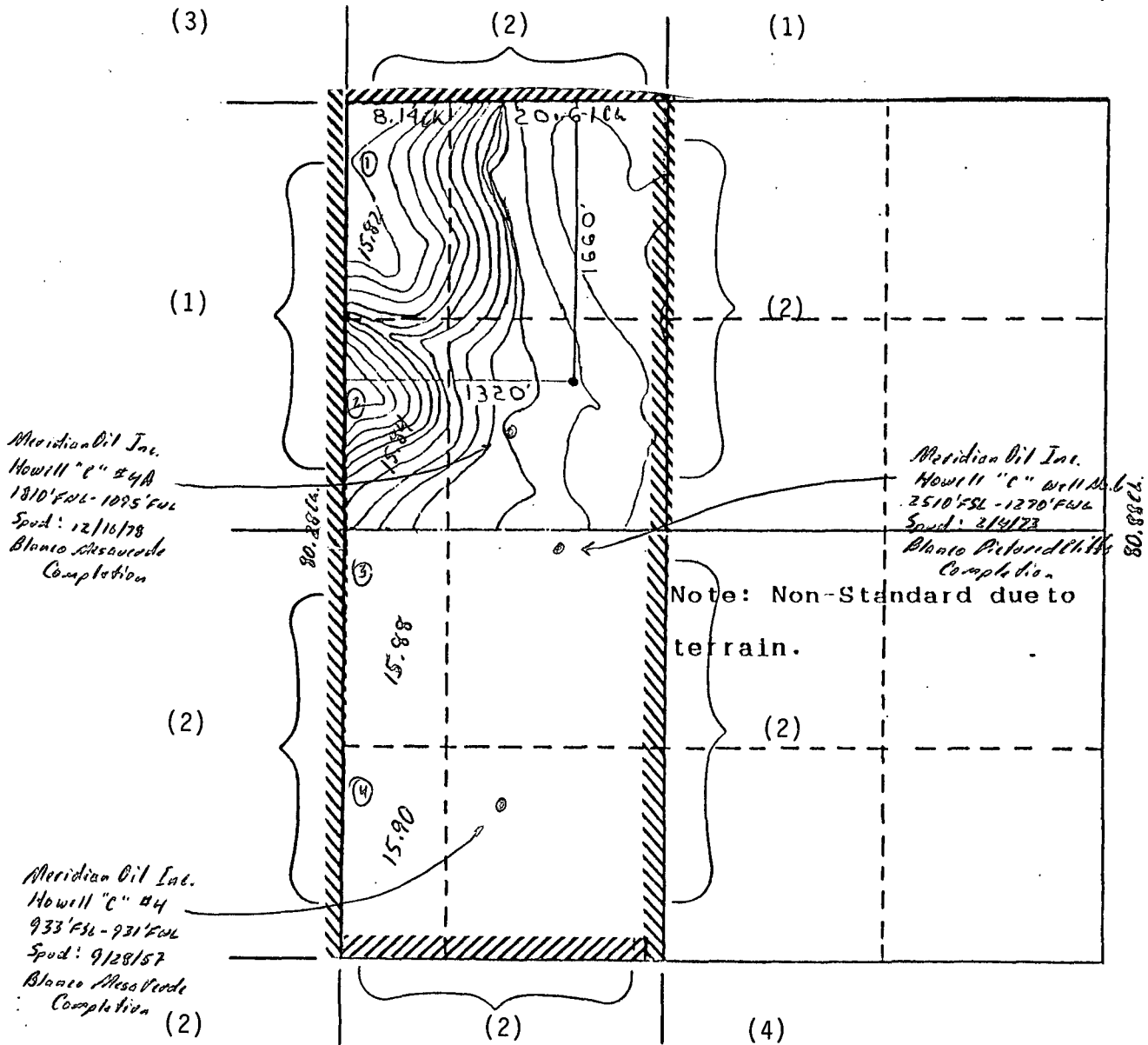
MERIDIAN OIL INC.

Well Name Howell C Com #301, Fruitland Coal

Footage----- 1660' FNL; 1320' FWL

APPLICATION FOR NON-STANDARD PRORATION UNIT

County San Juan State New Mexico Section 18 Township 30N Range 8W



REMARKS: OFFSET OPERATORS:

(1) Meridian Oil Inc.

(2) Tenneco Oil Company

(3) Union Texas Petroleum

(4) Union Oil Company of California

## OIL CONSERVATION DIVISION

STATE OF NEW MEXICO  
ENERGY AND MINERALS DEPARTMENTP. O. BOX 2088  
SANTA FE, NEW MEXICO 37501Form C-102  
Revised 10-1-78

All distances must be from the outer boundaries of the Section.

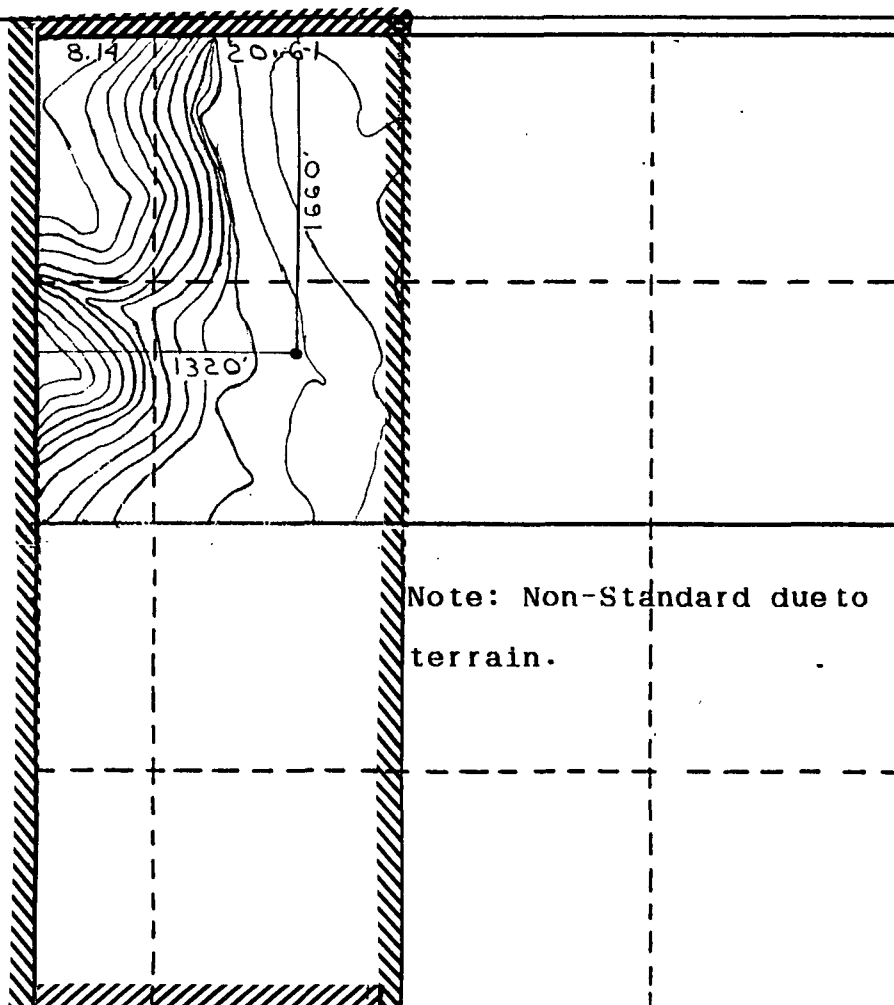
Operator <b>Meridian Oil Co.</b>			Lease <b>Howell C (SF-078596)</b>		Well No. <b>301</b>
Unit Letter <b>F</b>	Section <b>18</b>	Township <b>T30N</b>	Range <b>R8W</b>	County <b>San Juan</b>	
Actual Footage Location of Wells <b>1660</b> feet from the <b>North</b> line and <b>1320</b> feet from the <b>West</b> line					
Ground Level Elev. <b>6298</b>	Producing Formation <b>Fruitland Coal</b>		Pool <b>Basin</b>		Dedicated Acreage <b>223.44</b> Acres

1. Outline the acreage dedicated to the subject well by colored pencil or hachure marks on the plat below.
2. If more than one lease is dedicated to the well, outline each and identify the ownership thereof (both as to working interest and royalty).
3. If more than one lease of different ownership is dedicated to the well, have the interests of all owners been consolidated by communitization, unitization, force-pooling, etc?

☐ Yes ☐ No If answer is "yes," type of consolidation \_\_\_\_\_

If answer is "no," list the owners and tract descriptions which have actually been consolidated. (Use reverse side of this form if necessary.) \_\_\_\_\_

No allowable will be assigned to the well until all interests have been consolidated (by communitization, unitization, forced-pooling, or otherwise) or until a non-standard unit, eliminating such interests, has been approved by the Division.



## CERTIFICATION

I hereby certify that the information contained herein is true and complete to the best of my knowledge and belief.

Name  
**Regulatory Affairs**

Position  
**Meridian Oil Inc.**

Company

Date

I hereby certify that the well location shown on this plat was plotted from field notes of actual surveys made by me or under my supervision, and that the same is true and correct to the best of my knowledge and belief.

Registered Professional

Date Surveyed Land Surveyor

**April 1, 1988**

Registered Land Surveyor

**R Howard Daggett**

Certificate No.

**9679**

0 330 660 990 1320 1660 1990 2310 2640 2000 1500 1000 500 0

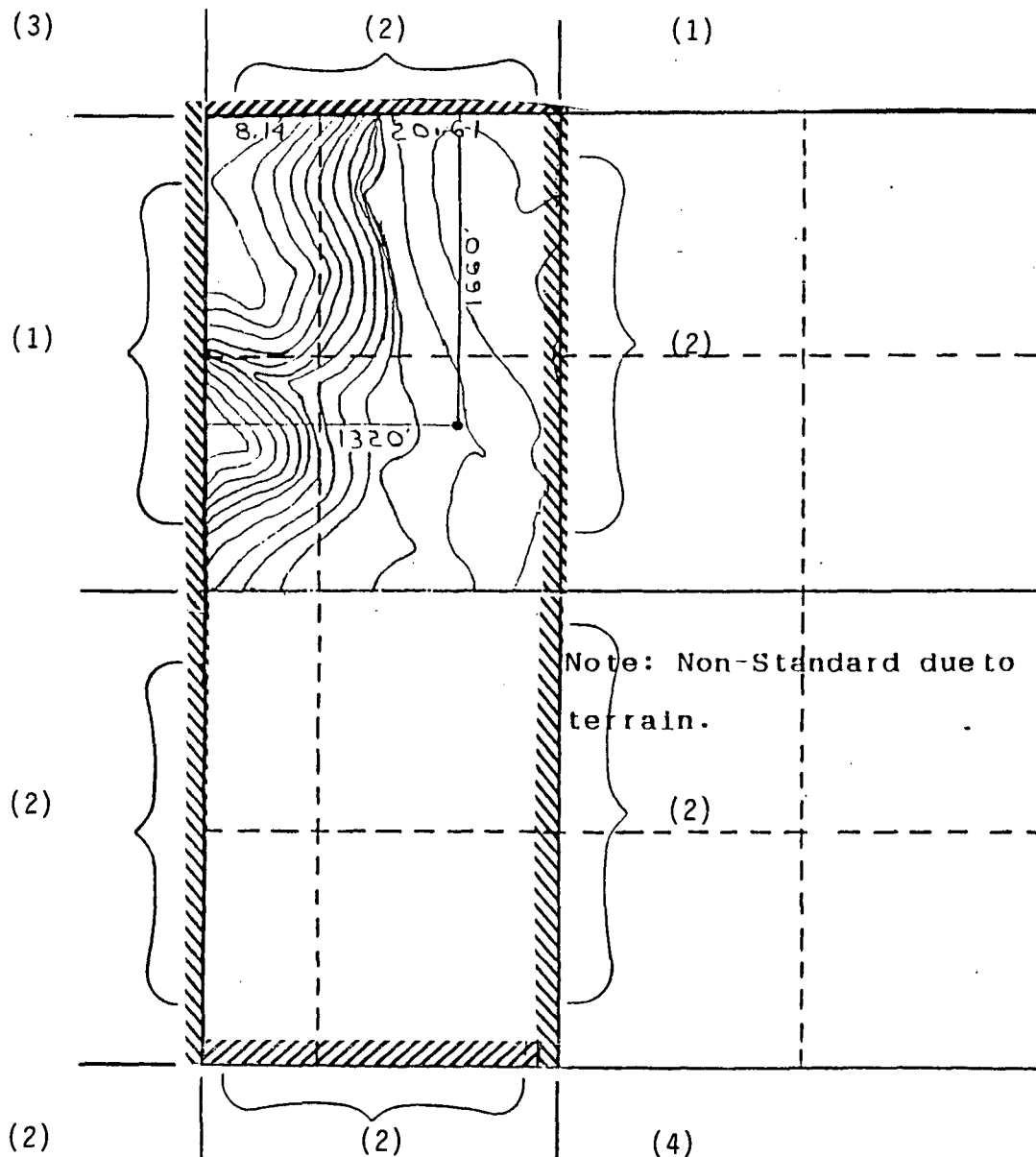
MERIDIAN OIL INC.

Well Name Howell C Com #301, Fruitland Coal

Footage----- 1660' FNL; 1320' FWL

APPLICATION FOR NON-STANDARD PRORATION UNIT

County San Juan State New Mexico Section 18 Township 30N Range 8W



REMARKS: OFFSET OPERATORS:

(1) Meridian Oil Inc.

(2) Tenneco Oil Company

(3) Union Texas Petroleum

(4) Union Oil Company of California

## OIL CONSERVATION DIVISION

STATE OF NEW MEXICO  
ENERGY AND MINERALS DEPARTMENTP. O. BOX 2088  
SANTA FE, NEW MEXICO 37501Form C-102  
Revised 10-1-78

All distances must be from the outer boundaries of the Section.

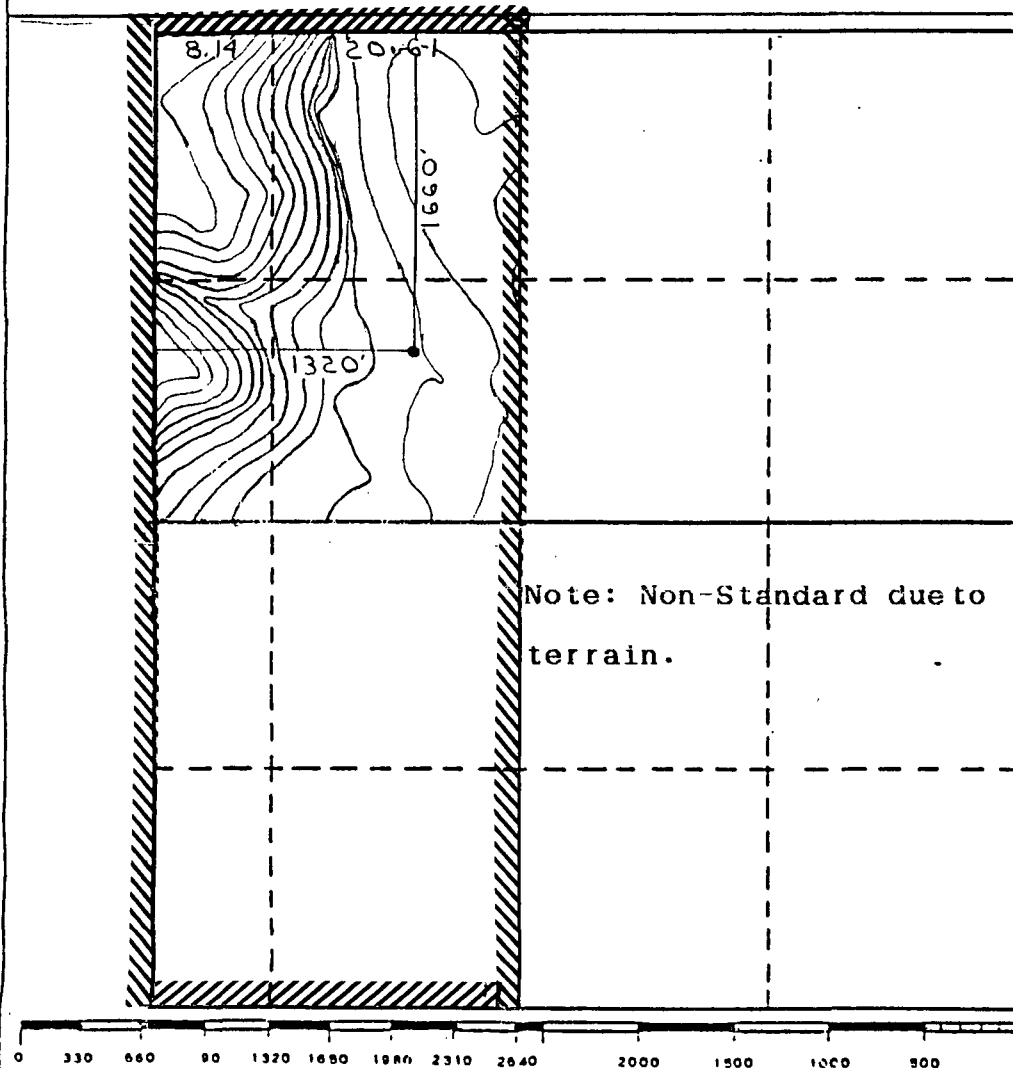
Operator <b>Meridian Oil Co.</b>			Lease <b>Howell C (SF-078596)</b>		Well No. <b>301</b>
Unit Letter <b>F</b>	Section <b>18</b>	Township <b>T30N</b>	Range <b>R8W</b>	County <b>San Juan</b>	
Actual Footage Location of Wells: <b>1660</b> feet from the <b>North</b> line and <b>1320</b> feet from the <b>West</b> line					
Ground Level Elev. <b>6298</b>	Producing Formation <b>Fruitland Coal</b>		Pool <b>Basin</b>		Dedicated Acreage <b>223.44</b> Acres

1. Outline the acreage dedicated to the subject well by colored pencil or hachure marks on the plat below.
2. If more than one lease is dedicated to the well, outline each and identify the ownership thereof (both as to working interest and royalty).
3. If more than one lease of different ownership is dedicated to the well, have the interests of all owners been consolidated by communitization, unitization, force-pooling, etc?

☐ Yes ☐ No If answer is "yes," type of consolidation \_\_\_\_\_

If answer is "no," list the owners and tract descriptions which have actually been consolidated. (Use reverse side of this form if necessary.) \_\_\_\_\_

No allowable will be assigned to the well until all interests have been consolidated (by communitization, unitization, forced-pooling, or otherwise) or until a non-standard unit, eliminating such interests, has been approved by the Division.



## CERTIFICATION

I hereby certify that the information contained herein is true and complete to the best of my knowledge and belief.

Name  
**Regulatory Affairs**

Position  
**Meridian Oil Inc.**

Company

Date

I hereby certify that the well location shown on this plat was plotted from field notes of actual surveys made by me or under my supervision, and that the same is true and correct to the best of my knowledge and belief.

Registered Professional

Date Surveyed Land Surveyor

**April 1, 1988**

Registered Land Surveyor

**R Howard Daggett**

Certificate No.

**9679**