

#233

STATE OF NEW MEXICO

ENERGY, MINERALS AND NATURAL RESOURCES DEPARTMENT

OIL CONSERVATION DIVISION

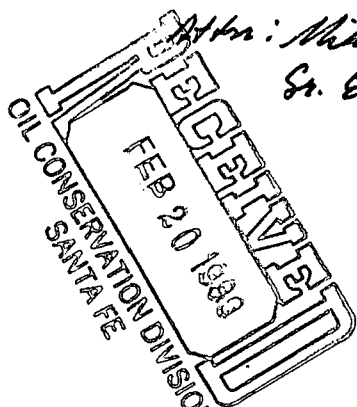
GARREY CARRUTHERS
GOVERNOR

January 11, 1989

POST OFFICE BOX 2088
STATE LAND OFFICE BUILDING
SANTA FE, NEW MEXICO 87504
(505) 827-5800Northwest Pipeline Corporation
P.O. Box 90
Farmington, NM 87499NORTHWEST PIPELINE
CORPORATION

FEB 8 1989

PRODUCTION AND DRILLING

Attn: Mike J. Turnbaugh
Sr. Engineer

Re: Application for a non-standard
gas production unit and for an
unorthodox coal gas well location.
Pura Unit Well No. 233
30-T31 N-R5W, Rio Arriba County.

Dear Mr. Turnbaugh

The subject well appears to be at a standard location pursuant to RULE 7 of the Special Rules and Regulations for the Basin Frontland Coal (Gas) Pool, as promulgated by Division Order No. R-8768. Said location is no closer than 790 feet to the outer boundary of the production unit, its further than 130 feet from the nearest quarter section line, its further than 10 feet from the nearest quarter-quarter section line, and its also within the SW/4 (equivalent) of the Section; therefore, the administrative portion of this application requesting an unorthodox coal gas well location is unnecessary at this time.

As for the non-standard production unit portion of this filing, please submit a plat showing all of the offset

NORTHWEST PIPELINE CORPORATION

PRODUCTION & DRILLING
3539 East 30th Street
Farmington, New Mexico 87401
4320-PD-036-89

February 9, 1989

NMOCC
Michael Stogner
310 Old Santa Fe Trail
Room #206
Santa Fe, NM 87503

Re: Non-Standard Proration Unit
Rosa Unit #233

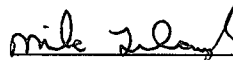
Dear Mr. Stogner:

I have reviewed the subject well again and since Northwest Pipeline operates the entire Rosa Unit as well as both the San Juan 30-5 Unit to the south and the 31-6 Unit to the west and southwest, I don't believe any offset operators exist that might need notification.

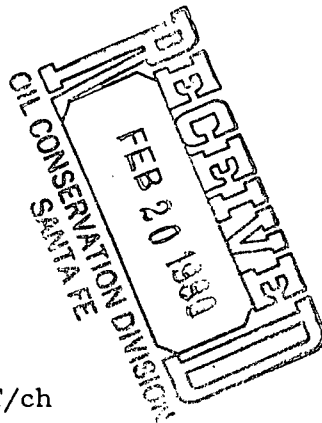
If your records indicate something other than this please let me know and I will be able to notify them.

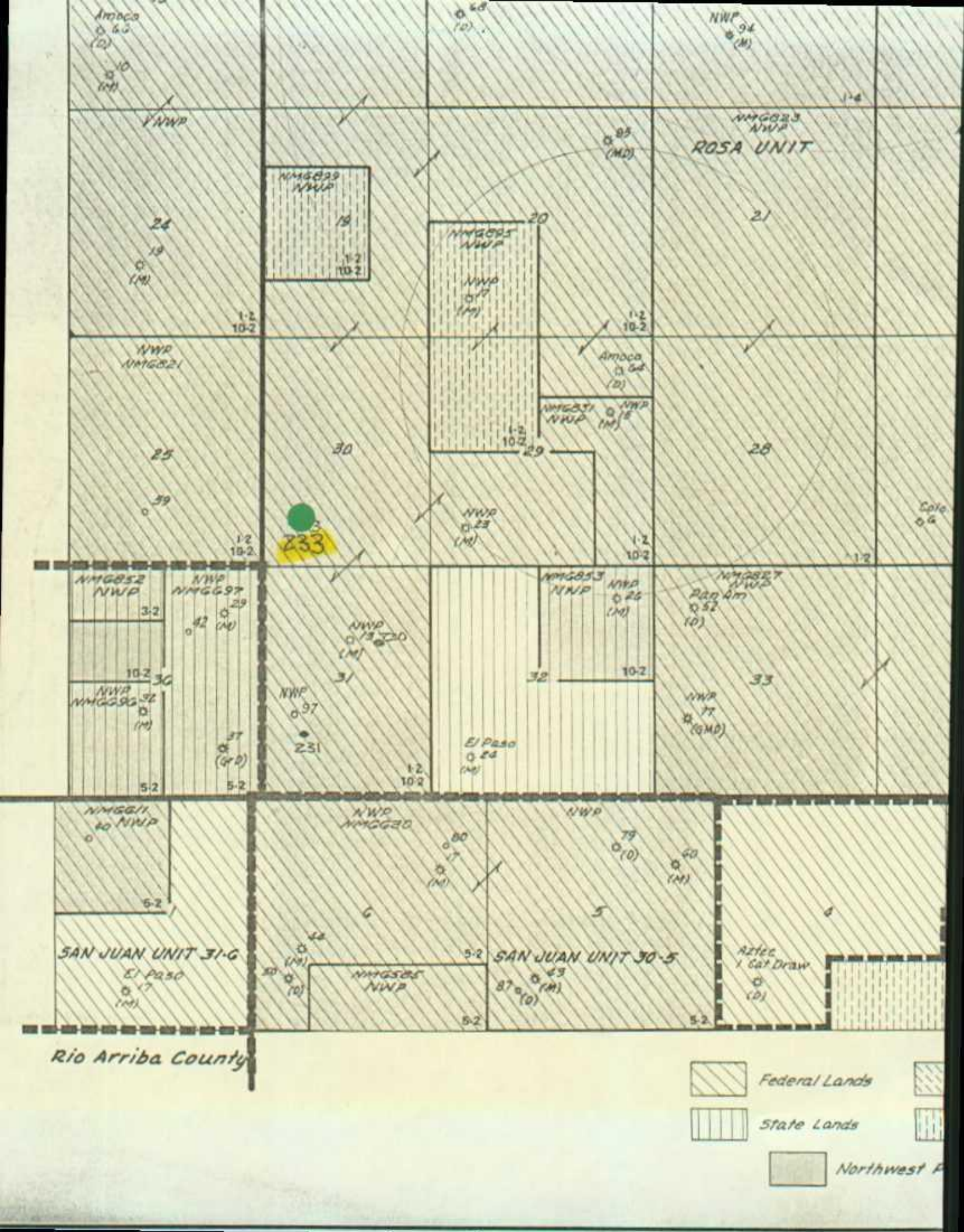
As you can see, there is a considerable amount of paper in a Federal APD package. Please discard those forms, etc. which are of no use to you.

Sincerely,


Mike Turnbaugh
Senior Engineer

MJT/ch





UNITED STATES
DEPARTMENT OF THE INTERIOR
BUREAU OF LAND MANAGEMENT

APPLICATION FOR PERMIT TO DRILL, DEEPEN, OR PLUG BACK

1a. TYPE OF WORK

DRILL ☒

DEEPEN ☐

PLUG BACK ☐

b. TYPE OF WELL

OIL
WELL ☐

GAS
WELL ☒

OTHER

SINGLE
ZONE ☒

MULTIPLE
ZONE ☐

2. NAME OF OPERATOR

Northwest Pipeline Corporation

3. ADDRESS OF OPERATOR

3539 East 30th Street - Farmington, NM 87401

4. LOCATION OF WELL (Report location clearly and in accordance with any State requirements.)*

At surface

990' FWL & 1720' FSL NE/4 SW/4

At proposed prod. zone

Same

14. DISTANCE IN MILES AND DIRECTION FROM NEAREST TOWN OR POST OFFICE*

Approximately 20 miles to Gobernador

10. DISTANCE FROM PROPOSED*

LOCATION TO NEAREST
PROPERTY OR LEASE LINE, FT.
(Also to nearest drlg. unit line, if any)

990'

16. NO. OF ACRES IN LEASE

N/A

17. NO. OF ACRES ASSIGNED
TO THIS WELL

232.79

18. DISTANCE FROM PROPOSED LOCATION*

TO NEAREST WELL, DRILLING, COMPLETED,
OR APPLIED FOR, ON THIS LEASE, FT.

+8000'

19. PROPOSED DEPTH

3242'

20. ROTARY OR CABLE TOOLS

Rotary

21. ELEVATIONS (Show whether DF, RT, GR, etc.)

6400' GR

22. APPROX. DATE WORK WILL START*

3-1-89

23.

PROPOSED CASING AND CEMENTING PROGRAM

SIZE OF HOLE	SIZE OF CASING	WEIGHT PER FOOT	SETTING DEPTH	QUANTITY OF CEMENT
12-1/4"	9-5/8"	32.3#	200'	125 cu.ft.
8-3/4"	7"	20#	3071'	145 cu.ft.
6-1/4"	5-1/2"	23#	3242'	Open hole completion

The S/2 of Section 30 is dedicated to this well.

Location is unorthodox due to non-standard size section. E/2 of Section 30 is standard, W/2 of Section + 1205' wide.

IN ABOVE SPACE DESCRIBE PROPOSED PROGRAM: If proposal is to deepen or plug back, give data on present productive zone and proposed new productive zone. If proposal is to drill or deepen directionally, give pertinent data on subsurface locations and measured and true vertical depths. Give blowout preventer program, if any.

24.

SIGNED

Mike Turnbaugh
Mike Turnbaugh

TITLE

Sr. Engineer

DATE

11-11-89

(This space for Federal or State office use)

PERMIT NO.

APPROVAL DATE

APPROVED BY

TITLE

DATE

CONDITIONS OF APPROVAL, IF ANY:

ch-1

*See Instructions On Reverse Side

NORTHWEST PIPELINE CORPORATION
OPERATIONS PLAN

Well Name: Rosa Unit #233

Date: November 4, 1988

I. Location: 990' FWL & 1720' FSL
Sec. 30, T31N, R5W
Rio Arriba County, NM

Elevation: 6400' GR
6412' KB

Field: Basin Fruitland Pool

Surface: BLM
Minerals: Fed SF-078764

II. Geology: Surface formation - San Jose

A. <u>Formation Tops</u>	<u>Depth</u>
Ojo Alamo	2508'
Kirtland	2616'
Fruitland Sand	2998'
Fruitland Coal	3086'
Pictured Cliffs	3243'
Intermediate TD	3071'
Final TD	3242'

B. Logging Program:

C. Natural Gauges: Gauge any noticeable increases in gas flow. Record all gauges on daily drilling and morning reports.

III. Drilling:

A. Contractor:

B. Mud Program: Mud, water & gas will be furnished by Northwest Pipeline Corporation from surface to total depth.

a) From surface to total casing depth to be drilled with mud.

C. While drill pipe is in use the pipe rams will be tested not less than once each day. The blind rams will be tested once each trip. All tests will be reported in the Northwest Pipeline Tour Reports as to time and date.

IV. Materials:

A. Casing Program:

<u>Hole Size</u>	<u>Depth O.H.</u>	<u>Casing Size</u>	<u>Wt. & Grade</u>
12-1/4	200'	9-5/8"	32.3# H-40
8-3/4"	3071'	7"	20# K-55
6-1/4	3242'	5-1/2"	23# P110

B. Float Equipment:

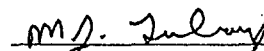
- a) Surface Casing: 9-5/8" - B&W Regular Pattern Shoe.
- b) Intermediate Casing: 7" - Dowell guide shoe (Code #50101-070) and self fill insert float collar (Code #53003-070). Five (5) centralizers (Code #56011-070) spaced every other joint above the shoe. Place float one joint above shoe.
- c) Liner: 5-1/2" - Perforated liner w/ notched collar on bottom. Liner hanger with neoprene pack off.

C. Tubing Program: 3200' of 2-7/8" 6.4#, EUE, J-55 tubing w/ seating nipple on top of bottom joint. Expendable check valve on bottom.

D. Wellhead Equipment: Rector well head drawing 88-0203 or equivalent. Wellhead company representative to set slips and make cut off.

V. Cementing

- A. Surface Casing: 9-5/8" - Use 105 sx (125 cu.ft.) of Cl "B" w/ 1/4# gel flake/sx and 3% CaCl₂ (Yield=1.19) (100% excess to circulate). WOC 12 hrs. Test surface casing to 600 psi for 30 min.
- B. Intermediate Casing: 7" - Cement w/ 80 sx Cl "B" w/ 6% gel and 6-1/4# gils/sx (Yield=1.87) (145 cu.ft.) 70% excess to cover Ojo Alamo. WOC 12 hrs. Test casing to 1200 psi for 30 min. Run temperature survey in 8 hrs.
- C. Production Liner: 5-1/2" - Perforated liner will be run without cement (open hole completion).


M.J. Turnbaugh
Sr. Engineer

MJT/ch
Original: Well file
cc: Regular distribution

All distances must be from the outer boundaries of the Section.

OCT 27 1988

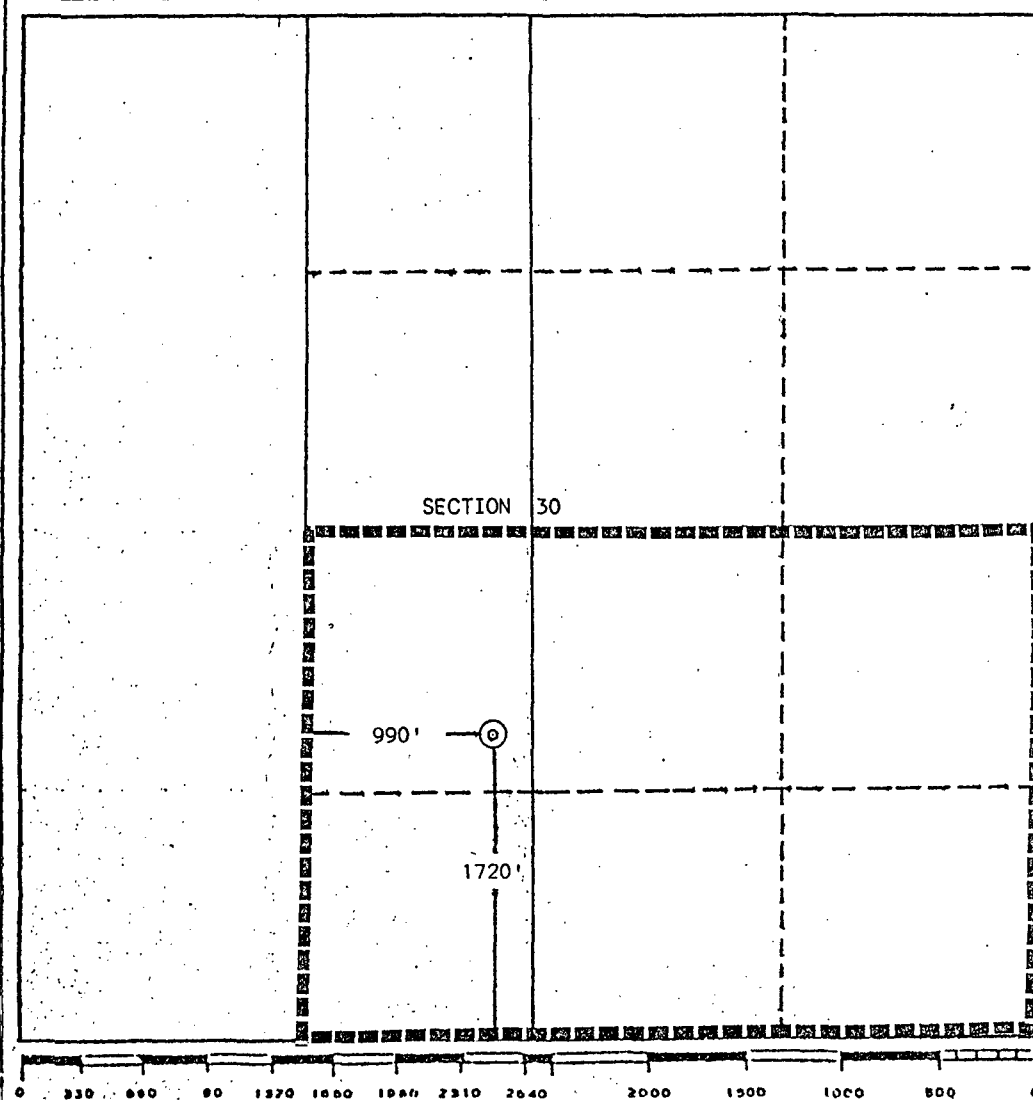
Operator Northwest Pipeline Corporation			Lease Rosa Unit		Well No. 233
Unit Letter K	Section 30	Township 31 North	Range 5 West	County Rio Arriba	
Actual Footage Location of Well: 1720 feet from the South line and 990 feet from the West line					
Ground Level Elev. 6400	Producing Formation Fruitland	Pool Basin Fruitland Pool		Dedicated Acreage: 232.79 Acres	

1. Outline the acreage dedicated to the subject well by colored pencil or hatchure marks on the plat below.
2. If more than one lease is dedicated to the well, outline each and identify the ownership thereof (both as to working interest and royalty).
3. If more than one lease of different ownership is dedicated to the well, have the interests of all owners been consolidated by communitization, unitization, force-pooling, etc?

☒ Yes ☐ No If answer is "yes," type of consolidation unitization

If answer is "no," list the owners and tract descriptions which have actually been consolidated. (Use reverse side of this form if necessary.)

No allowable will be assigned to the well until all interests have been consolidated (by communitization, unitization, forced-pooling, or otherwise) or until a non-standard unit, eliminating such interests, has been approved by the Division.



CERTIFICATION

I hereby certify that the information contained herein is true and complete to the best of my knowledge and belief.

Mike Turnbaugh

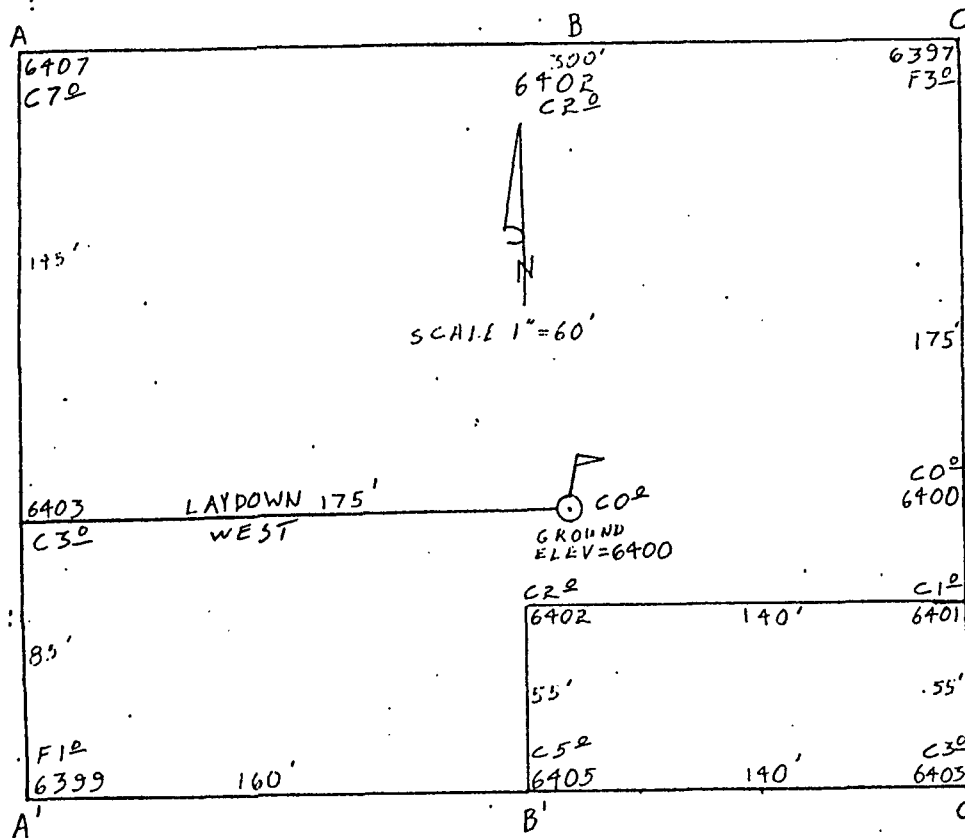
Name
Mike Turnbaugh
Position
Senior Engineer
Company
Northwest Pipeline Corp.
Date
10-26-88

I hereby certify that the location shown on this plat was plotted from field notes of actual survey made by me or under my supervision and that the same is true and correct to the best of my knowledge and belief.

Date Surveyed
October 10, 1988

Registered Professional Engineer
and/or Land Surveyor

Edgar L. Risenhoover
Certificate No. 5979
Edgar L. Risenhoover, L.S.



Northwest Pipeline Corp.

~~OPERATOR~~

Rosa Unit 233

~~WELL NAME & NO.~~

1720' F/SL 990' F/WL

FOOTAGES

30 31N 5W

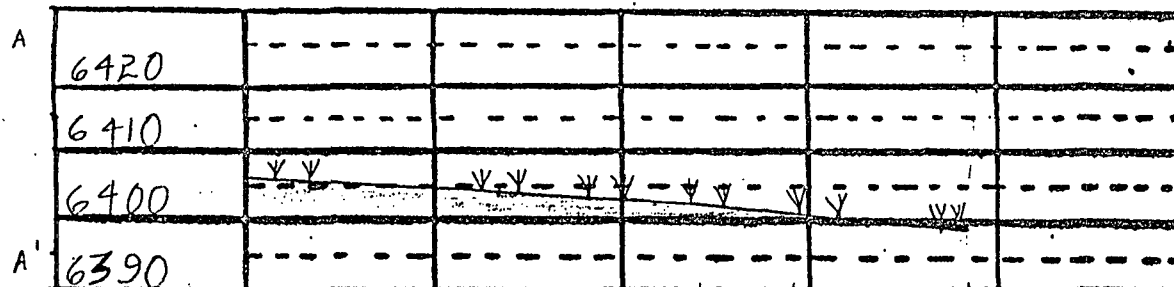
SEC. TWP. RGE.

Rio Arriba, NM

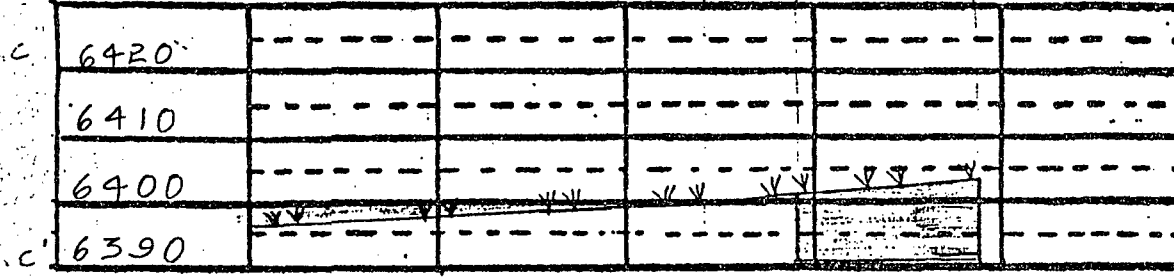
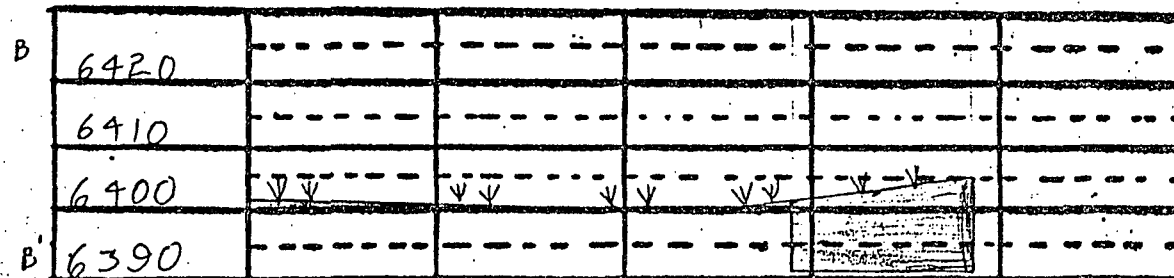
COUNTY

October 10, 1988

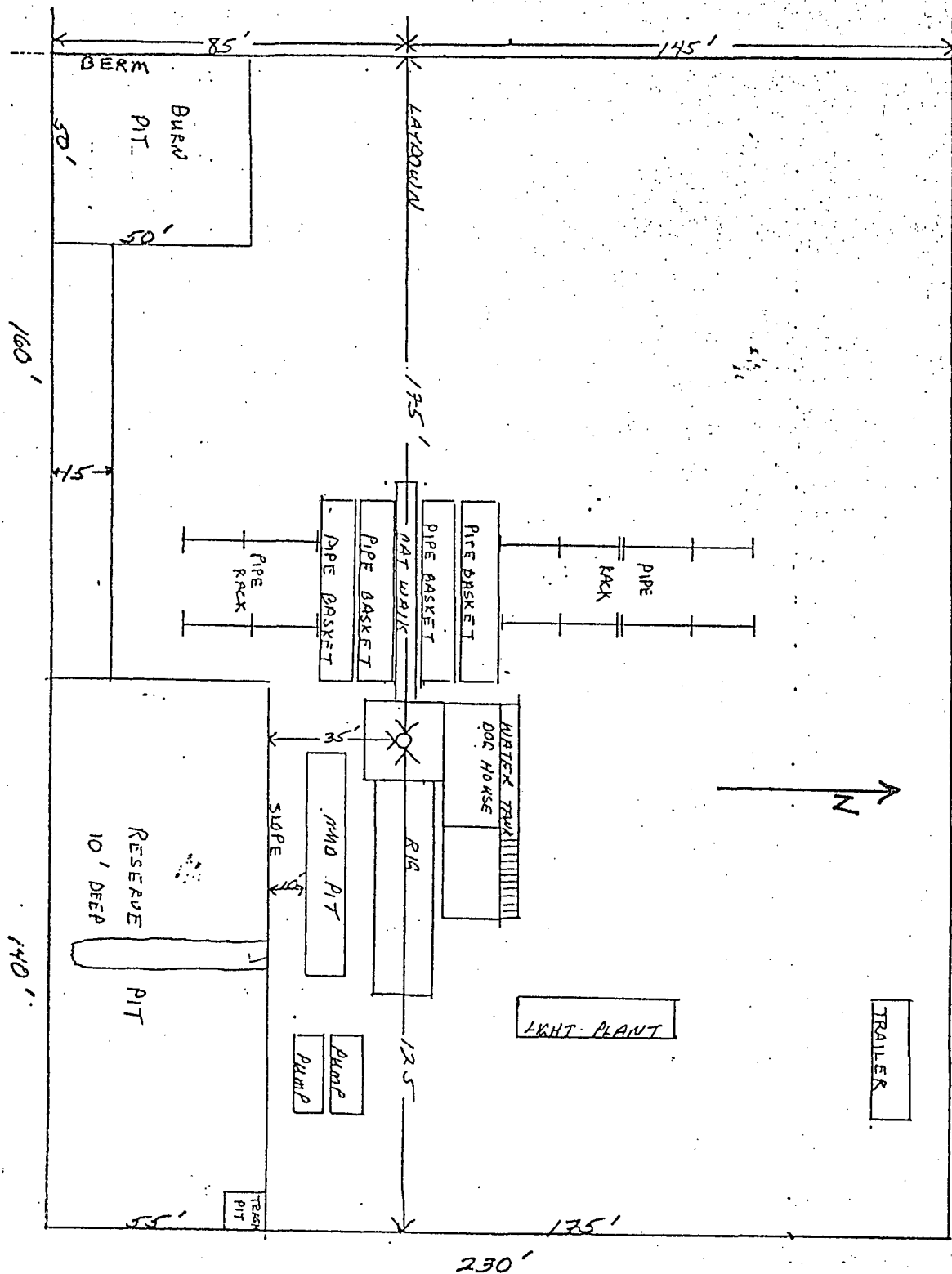
DATE

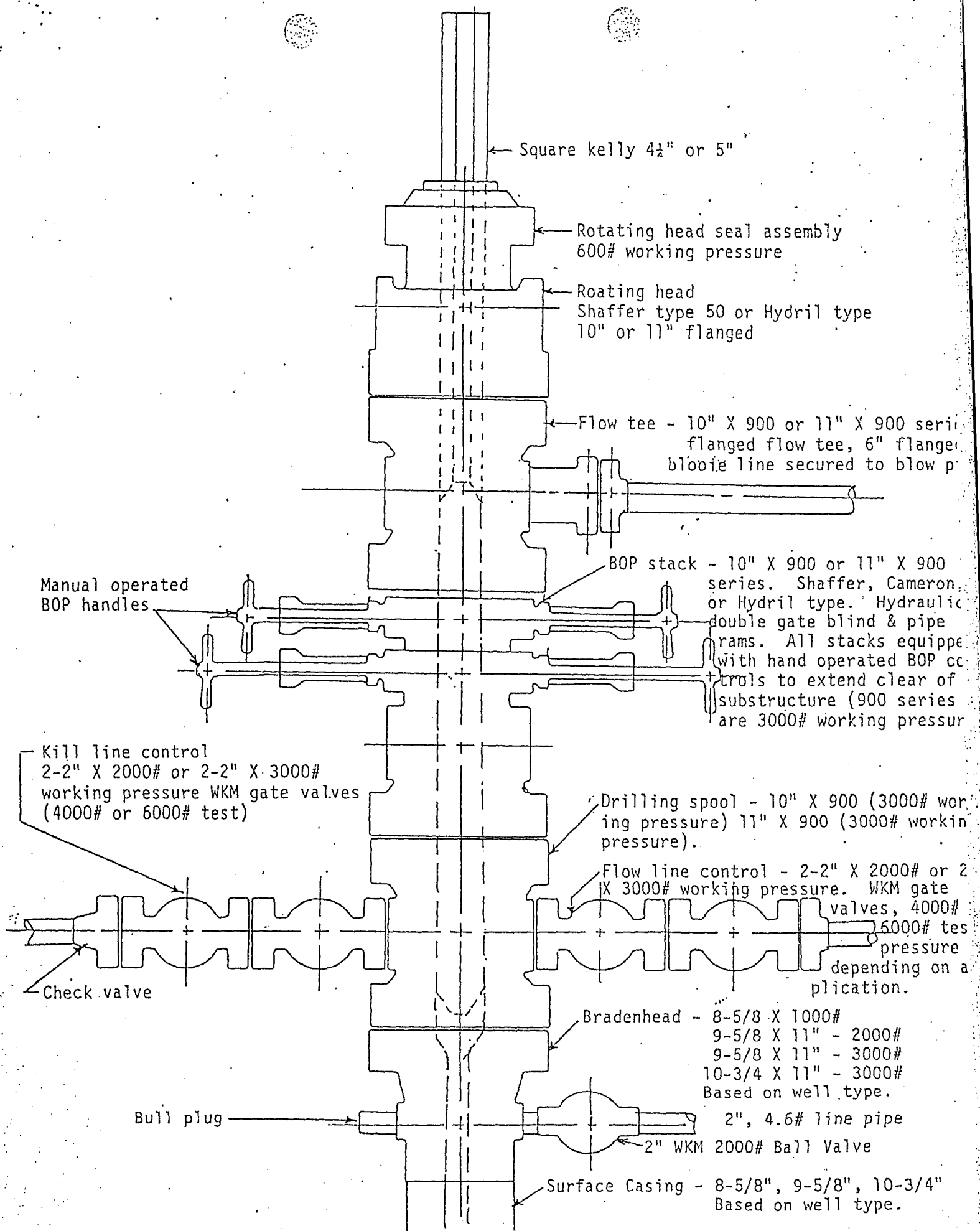


SCALES
HORIZ = 1" = 60'
VERT = 1" = 30'



NORTHWEST PIPELINE CORROSION LOCATION LAYOUT ROSA UNIT 233





Multi-Point Surface Use Plan

1. Existing Roads

To reach the proposed location, start from Farmington, New Mexico and go on N.M. 64, approximately 45 miles to Gobernador. Turn north on Sims Highway and travel approximately 5 miles. Turn right on Rosa Road 15 miles to location.

All existing roads used to access the proposed location shall be maintained in the same or better condition than presently found. Access road classified as "Temporary Resource Road".

2. Planned Access Roads

The required new access road is shown on the attached map. The proposed route is flagged and approximately 4000' feet in length. The road surface will not exceed 20 feet in width. Grade of the road will be consistent with the local terrain with a maximum grade of five percent. Upon completion of the project, the access road shall be adequately drained to control soil erosion. Water bars, culverts or turnouts will be used as necessary. Gates will be installed where the access road crosses an existing fence line as per map. Access road to be classified "Temporary Resource Road".

3. Location of Existing Wells

Attached map shows existing wells within a one mile radius of the proposed wells.

4. Location of Production Facilities

In the event of production, production facilities will be located on the drill pad. The actual placement of this equipment will be determined when the well's production characteristics can be evaluated after completion.

To protect livestock and wildlife, the reserve pit will be fenced. The condensate tanks will be enclosed by a dyke.

Upon completion of drilling, the location and surrounding area will be cleared of all debris. All trash will be disposed of in the trash pit.

5. Water Supply

Water for drilling and completion operations will be hauled by truck from La Jara water hole.

6. Source of Construction Materials

No additional construction materials will be required to build the proposed location.

7. Methods for Handling Waste Disposal

a. The drill cuttings, fluids and completion fluids will be placed in the reserve pit. The reserve pit will be fenced on three sides away from the pad during drilling and the fourth side fenced as soon as the rig moves out. The reserve pit will be allowed to dry, and materials remaining in the reserve pit buried. The reserve pit will be backfilled, leveled and contoured so as to prevent any materials being carried into the watershed. Upon completion, the pad will be leveled, contoured, and reseeded with the appropriate seed mixture.

b. All garbage and trash will be placed in a burn pit (Plat 2). This earthen pit will be four to six feet deep with small mesh wire fencing to prevent the scattering of trash. Upon cleanup, any refuse in the burn pit will be buried at least three feet deep.

c. Portable toilets will be provided and maintained during drilling operations. See Plat 2 for location.

8. Ancillary Facilities

No ancillary facilities are planned.

9. Well Site Layout

A cross-section of the drill pad with approximate cuts, fills and pad orientation is attached. Location of drilling equipment, rig orientation, and access road approach is also attached.

10. Plans for Restoration of Surface

When the well is abandoned, the location and access road will be cleaned and restored to the original topographical contours as much as possible. The area will be reseeded with the appropriate seed mixture.

If the well is productive, areas not used in production will be contoured and seeded with stipulated seed mixture. Production equipment will be painted the color designated by the surface managing agency. A stock pond will be built adjacent to the location as per map.

11. Surface Ownership

a. The surface ownership is Bureau of Land Management, administered by the Bureau of Land Management.

Multi-Point Surface Use Plan

Rosa #233

Page #3

12. Other Information

Refer to the archaeological report for a description of the topography, flora, fauna, soil characteristics, dwellings, historical and cultural sites.

13. Lessee's or Operator's Representative

Northwest Pipeline Corporation
Production & Drilling Department
3539 East 30th Street
Farmington, New Mexico 87401
Phone: 505/327-5351

14. Certification

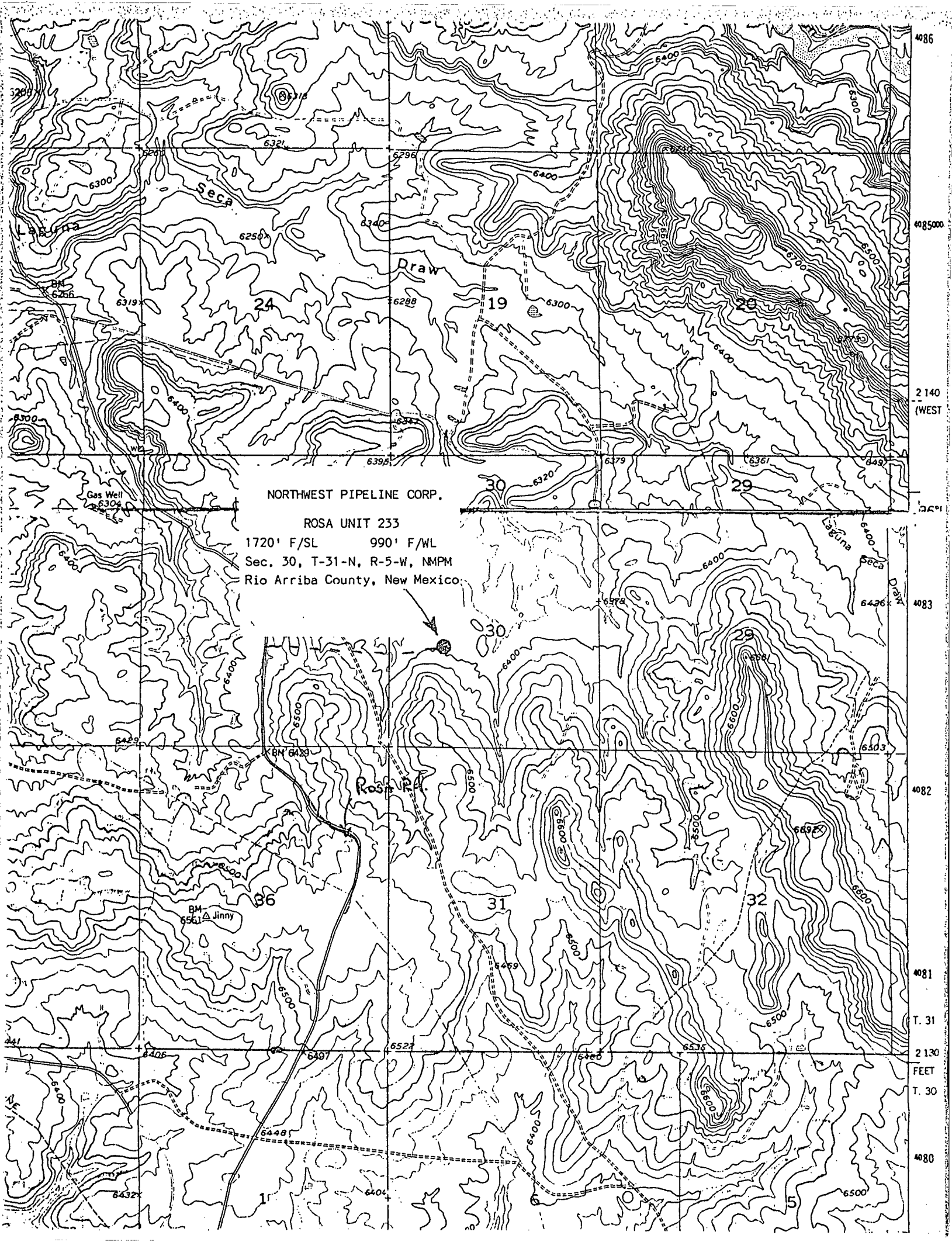
I hereby certify that I, or persons under my direct supervision, have inspected the proposed drillsite and access route; that I am familiar with the conditions which presently exist; that the statements made in this plan are, to the best of my knowledge, true and correct; and, that the work associated with the operations proposed herein will be performed by Northwest Pipeline Corporation, and its contractors and subcontractors in conformity with this plan and the terms and conditions under which it is approved.

11-8-88

Date

Mike Turnbaugh

Mike Turnbaugh
Senior Engineer



NORTHWEST PIPELINE CORP.

ROSA UNIT 233

1720' F/SL 990' F/WL
Sec. 30, T-31-N, R-5-W, NMPM
Rio Arriba County, New Mexico

4086
408500
2140 (WEST)
4083
4082
4081
2130
FEET
2130
4080

