



CONSERVATION DIVISION  
RECEIVED

Midland Division  
Exploration and Production

Conoco Inc.  
10 Desta Drive West  
Midland, TX 79705-4514  
(915) 686-5400

91 JUN 4 11 8 58

May 30, 1991

Mr. William LeMay, Director  
State of New Mexico  
Oil Conservation Division  
P.O. Box 2088  
Santa Fe, New Mexico 87501

Case 10358

Dear Mr. LeMay:

**Request for 160-Acre Non-Standard Proration Unit  
In The Jalmat Tansill Yates Seven Rivers Pool  
For Conoco's State E Well No. 2 Located At  
1980' FSL & 660' FEL, Sec. 17, T-22S, R-36E,  
Lea County, New Mexico**

Conoco Inc. respectfully requests administrative approval of a 160-acre non-standard proration unit for a Jalmat recompletion in its State E Well No. 2. The location of this well and the 160 acres proposed to be dedicated to it are shown on the attached C-102.

This well will be plugged back from the depleted Eunice Seven Rivers Queen Oil Pool and completed in the Jalmat Tansill Yates Seven Rivers Pool as a gas producer. These 160 acres are undedicated to Jalmat production and the well is at a standard location for a 160-acre proration unit.

A map of the State E Lease showing offset operators to the proposed 160-acre proration unit has been attached to this application. A list of these offset operators is also enclosed and each has been notified by certified mail of this application.

If there are any further questions concerning this application, please contact Jerry W. Hoover at (915) 686-6548.

Very truly yours,

Jerry W. Hoover  
Senior Conservation Coordinator

JWH/tm

# OIL CONSERVATION DIVISION

P.O. Box 2088  
Santa Fe, New Mexico 87504-2088

## DISTRICT I

P.O. Box 1980, Hobbs, NM 88240

## DISTRICT II

P.O. Drawer DD, Artesia, NM 88210

## DISTRICT III

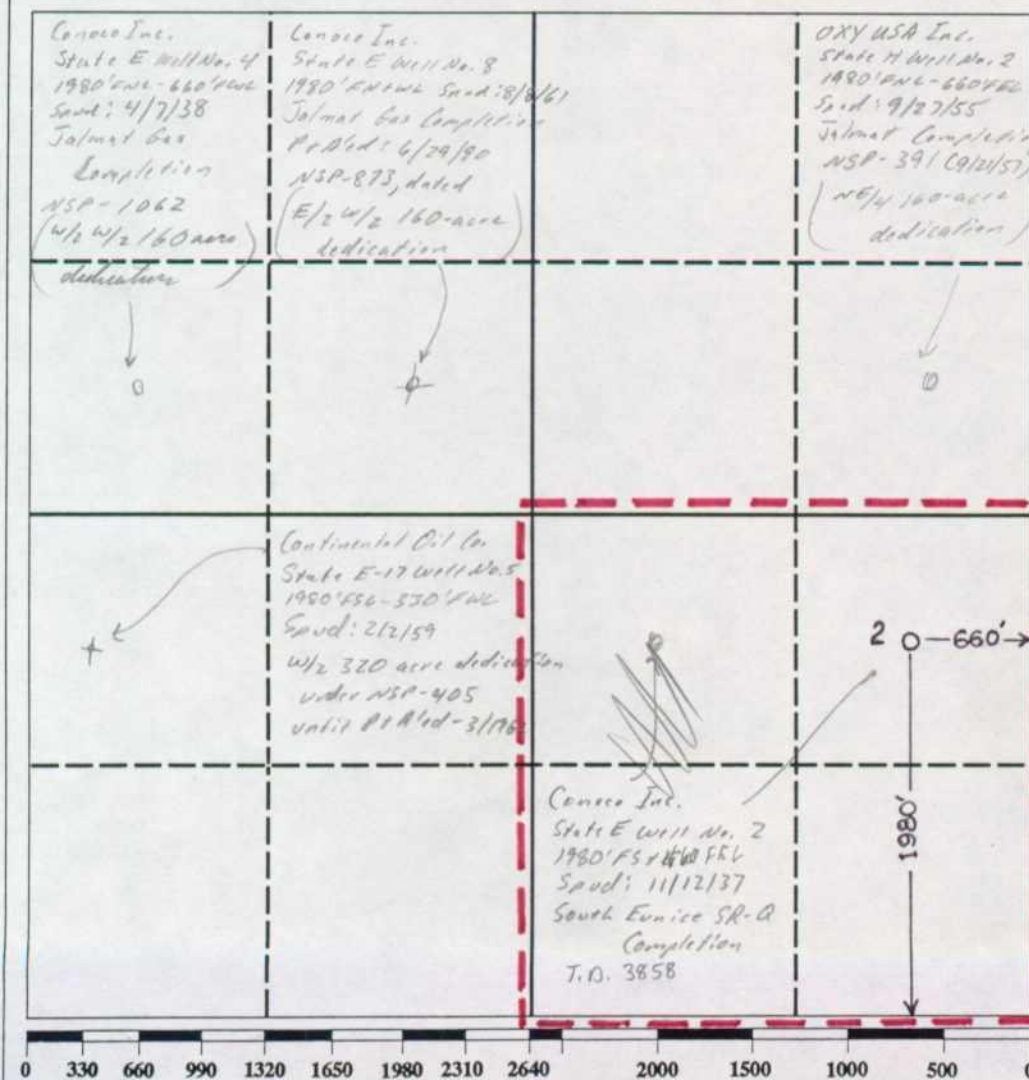
1000 Rio Brazos Rd., Aztec, NM 87410

## WELL LOCATION AND ACREAGE DEDICATION PLAT

All Distances must be from the outer boundaries of the section

Operator <b>Conoco, Inc.</b>		Lease <b>State E</b>		Well No. <b>2</b>
Unit Letter <b>I</b>	Section <b>17</b>	Township <b>22S</b>	Range <b>36E</b>	County <b>NMPM Lea</b>
Actual Footage Location of Well: <b>1980</b> feet from the <b>South</b> line and <b>660</b> feet from the <b>East</b> line				
Ground level Elev. <b>3556'</b>	Producing Formation <b>Yates 7-Rivers</b>	Pool <b>Jalmat Tansill Yates 7-Rivers</b>	Dedicated Acreage: <b>160 Acres</b>	

- Outline the acreage dedicated to the subject well by colored pencil or hatchure marks on the plat below.
- If more than one lease is dedicated to the well, outline each and identify the ownership thereof (both as to working interest and royalty).
- If more than one lease of different ownership is dedicated to the well, have the interest of all owners been consolidated by communitization, unitization, force-pooling, etc.?  
☐ Yes ☐ No If answer is "yes" type of consolidation \_\_\_\_\_  
If answer is "no" list the owners and tract descriptions which have actually been consolidated. (Use reverse side of this form if necessary).  
No allowable will be assigned to the well until all interests have been consolidated (by communitization, unitization, forced-pooling, or otherwise) or until a non-standard unit, eliminating such interest, has been approved by the Division.



## OPERATOR CERTIFICATION

I hereby certify that the information contained herein is true and complete to the best of my knowledge and belief.

Signature

Printed Name

**Jerry W. Hoover**

Position

**Sr. Conservation Coordinator**

Company

**Conoco, Inc.**

Date

**May 30, 1991**

## SURVEYOR CERTIFICATION

I hereby certify that the well location shown on this plat was plotted from field notes of actual surveys made by me or under my supervision, and that the same is true and correct to the best of my knowledge and belief.

Date Surveyed

Signature & Seal of  
Professional Surveyor

Certificate No.

**LIST OF OFFSET OPERATORS TO**

**SE/4, SECTION 17, T-22S, R-36E**

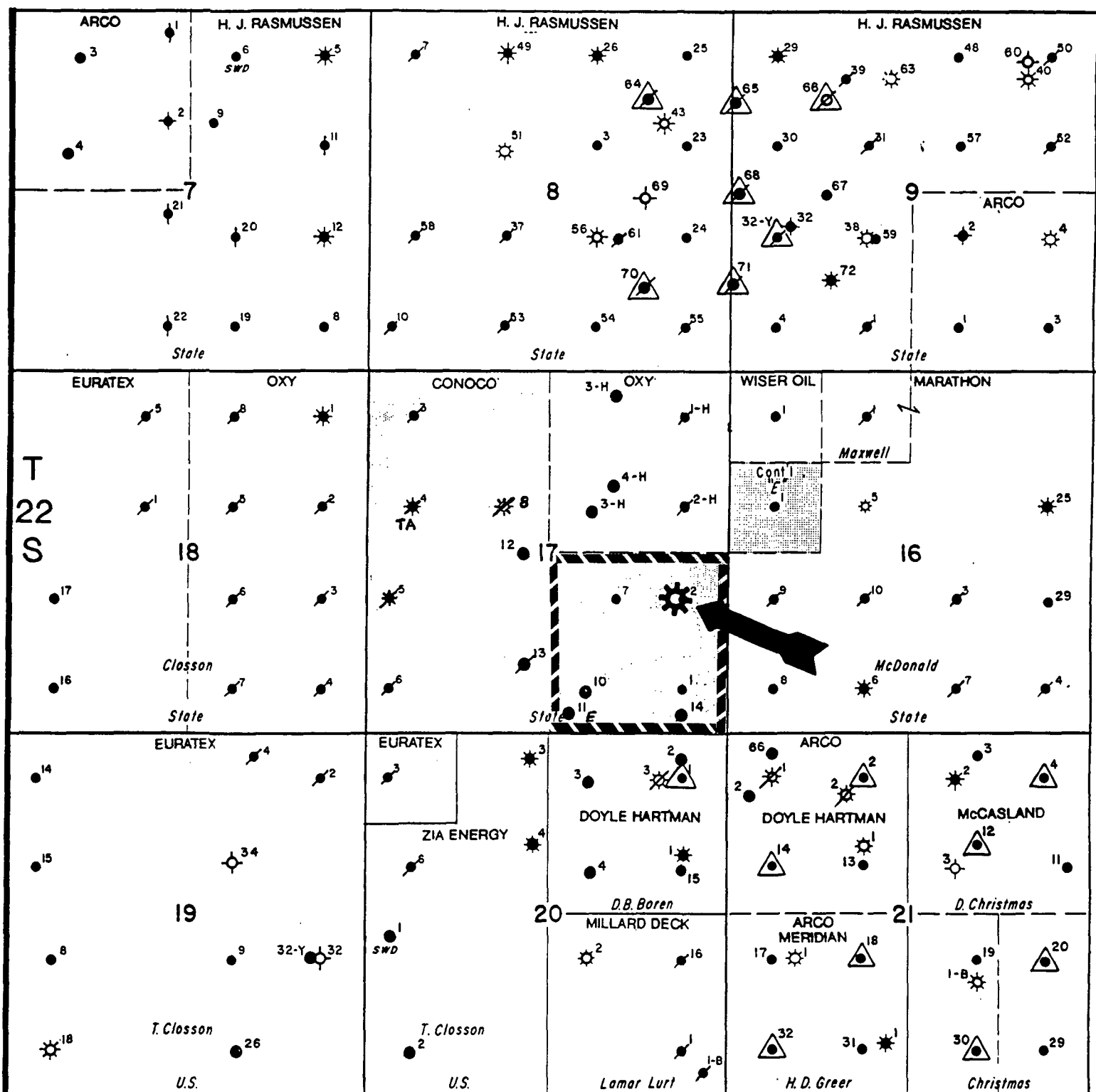
**CONOCO'S STATE E LEASE**

Doyle Hartman  
P.O. Box 10426  
Midland, TX 79702

Marathon Oil Co.  
P.O. Box 552  
Midland, TX 79702

OXY USA, Inc.  
P.O. Box 79702  
Midland, TX 79702

Zia Energy, Inc.  
P.O. Box 2219  
Hobbs, NM 88240



R 36 E

- Proposed Proration Unit
- Proposed Location
- Producing Well
- Plugged Well
- Dry Hole
- Injection Well



Exploration & Production  
MIDLAND DIVISION

## STATE E LEASE

PROJECT: State E No. 2 Jalmat Recompletion

COUNTY: Lea, NM

C.I.:

BY:

DATE: 4-22-91