



NEW MEXICO OIL CONSERVATION DIVISION
RECEIVED

PO Box 780
Hobbs, NM 88241-0780
505 393 7191

24 DEC 1994 10 52

December 19, 1994

New Mexico Oil Conservation Division
PO Box 2088
Santa Fe, NM 87501

Attn: Mr. William J. LeMay
Division Director, New Mexico Conservation Division

Re: **NON-STANDARD GAS PRORATION UNIT**
B. F. HARRISON "B" #25
UNIT C, SECTION 9, TOWNSHIP 23S, RANGE 37E
LEA COUNTY, NEW MEXICO

Dear Mr. Lemay,

Texaco Exploration and Production Inc. respectfully requests a non-standard 120 acre gas proration unit in the North Teague Tubb Associated pool for the B. F. Harrison "B" #25. The subject well currently occupies a 160 acre proration unit. However, TEPI recently drilled another Tubb Associated well (the B. F. Harrison "B" #17) which is classified as an oil well and occupies the same 160 acres as the Harrison #25. For TEPI to remain in compliance with state regulations, a standard 40 acre proration unit must be dedicated to the new oil well (Harrison #17) and a non-standard 120 acres be dedicated to the gas well (Harrison #25).

Copies of this letter have been sent to all offset operators within one mile of the subject well.

If you have any questions concerning this request please contact me @ (505) 397-0426.
Thank you very much for your cooperation.

Sincerely,

Darrell J. Carriger
Engineering Assistant

cc: Mr. Jerry Sexton (NMOCD in Hobbs)

DISTRICT I

P.O. Box 1980, Hobbs, NM 88241-1980

DISTRICT II

P.O. Box Drawer DD, Artesia, NM 88211-0719

DISTRICT III

1000 Rio Brazos Rd., Aztec, NM 87410

DISTRICT IV

P.O. Box 2088, Santa Fe, NM 87504-2088

State of New Mexico
Energy, Minerals and Natural Resources Department**OIL CONSERVATION DIVISION**

P.O. Box 2088

Santa Fe, New Mexico 87504-2088

Form C-102

Revised February 10, 1994

Instructions on back

Submit to Appropriate District Office

State Lease - 4 Copies

Fee Lease - 3 Copies

☐ AMENDED REPORT**WELL LOCATION AND ACREAGE DEDICATION PLAT**

¹ API Number 30 025 32499		² Pool Code 96315	³ Pool Name NORTH TEAGUE TUBB ASSOCIATED
⁴ Property Code 10960	⁵ Property Name HARRISON, B. F. 'B'		⁶ Well No. 25
⁷ OGRID Number 022351	⁸ Operator Name TEXACO EXPLORATION & PRODUCTION INC.		⁹ Elevation 3313'

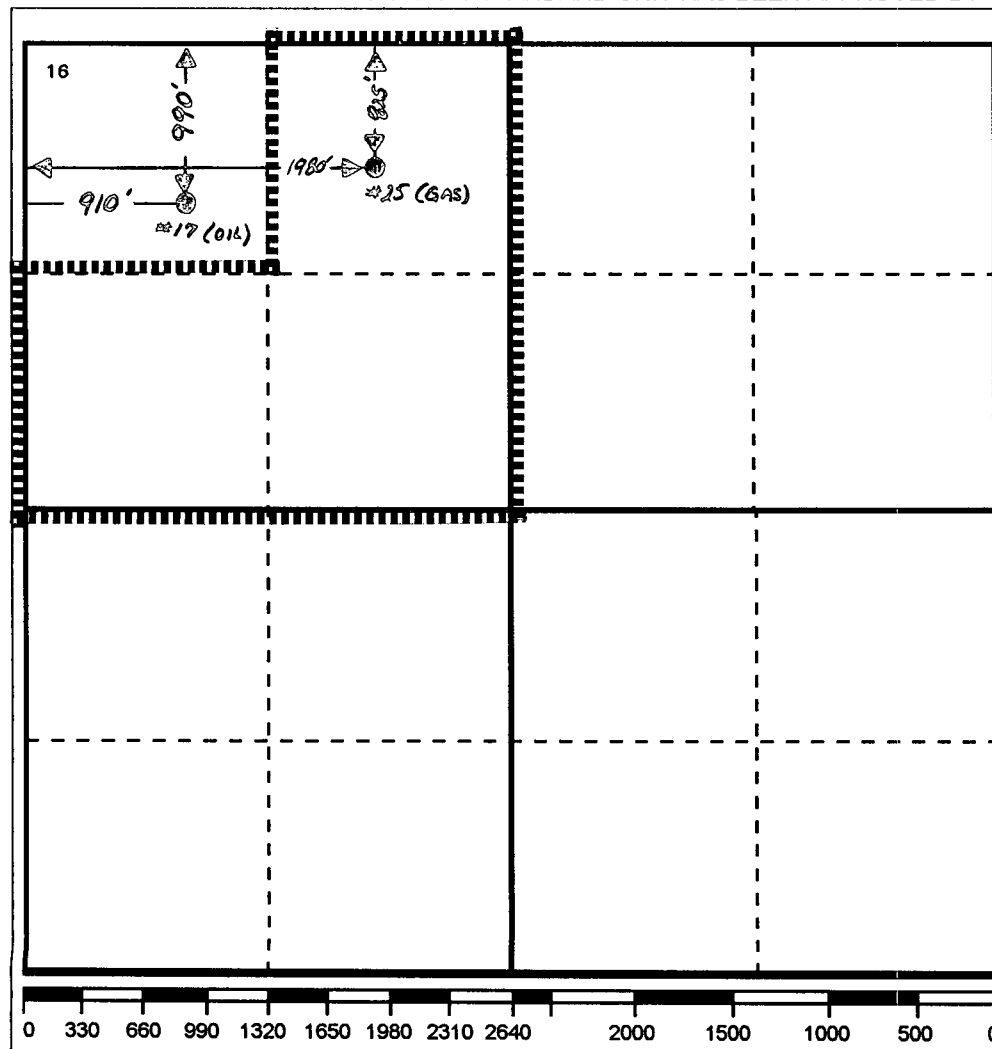
¹⁰ Surface Location

UI or lot no. C	Section 9	Township 23-S	Range 37-E	Lot.Idn	Feet From The 825	North/South Line NORTH	Feet From The 1980	East/West Line WEST	County LEA
--------------------	--------------	------------------	---------------	---------	----------------------	---------------------------	-----------------------	------------------------	---------------

¹¹ Bottom Hole Location If Different From Surface

UI or lot no.	Section	Township	Range	Lot.Idn	Feet From The	North/South Line	Feet From The	East/West Line	County
---------------	---------	----------	-------	---------	---------------	------------------	---------------	----------------	--------

¹² Dedicated Acres 120	¹³ Joint or Infill No	¹⁴ Consolidation Code	¹⁵ Order No.
--------------------------------------	-------------------------------------	----------------------------------	-------------------------

NO ALLOWABLE WILL BE ASSIGNED TO THIS COMPLETION UNTIL ALL INTERESTS HAVE BEEN CONSOLIDATED
OR A NON-STANDARD UNIT HAS BEEN APPROVED BY THE DIVISION¹⁷ OPERATOR CERTIFICATIONI hereby certify that the information
contained herein is true and complete to the
best of my knowledge and belief

Signature

Printed Name

Darrell J. Carriger

Position

Engineering Assistant

Date

12/19/94

¹⁸ SURVEYOR CERTIFICATIONI hereby certify that the well location shown
on this plat was plotted from field notes of
actual surveys made by me or under my
supervision, and that the same is true and
correct to the best of my knowledge and
belief.

Date Surveyed

Signature & Seal of
Professional Surveyor

Certificate No.

DISTRICT I

P.O. Box 1980, Hobbs, NM 88241-1980

DISTRICT II

P.O. Box Drawer DD, Artesia, NM 88211-0719

DISTRICT III

1000 Rio Brazos Rd., Aztec, NM 87410

DISTRICT IV

P.O. Box 2088, Santa Fe, NM 87504-2088

State of New Mexico
Energy, Minerals and Natural Resources Department**OIL CONSERVATION DIVISION**P.O. Box 2088
Santa Fe, New Mexico 87504-2088

Form C-102

Revised February 10, 1994

Instructions on back

Submit to Appropriate District Office

State Lease - 4 Copies

Fee Lease - 3 Copies

☐ AMENDED REPORT**WELL LOCATION AND ACREAGE DEDICATION PLAT**

¹ API Number 30 025 32497	² Pool Code 96315	³ Pool Name NORTH TEAGUE - TUBB ASSOCIATED
⁴ Property Code 10960	⁵ Property Name HARRISON, B. F. 'B'	⁶ Well No. 17
⁷ OGRID Number 022351	⁸ Operator Name TEXACO EXPLORATION & PRODUCTION INC.	⁹ Elevation 3318'

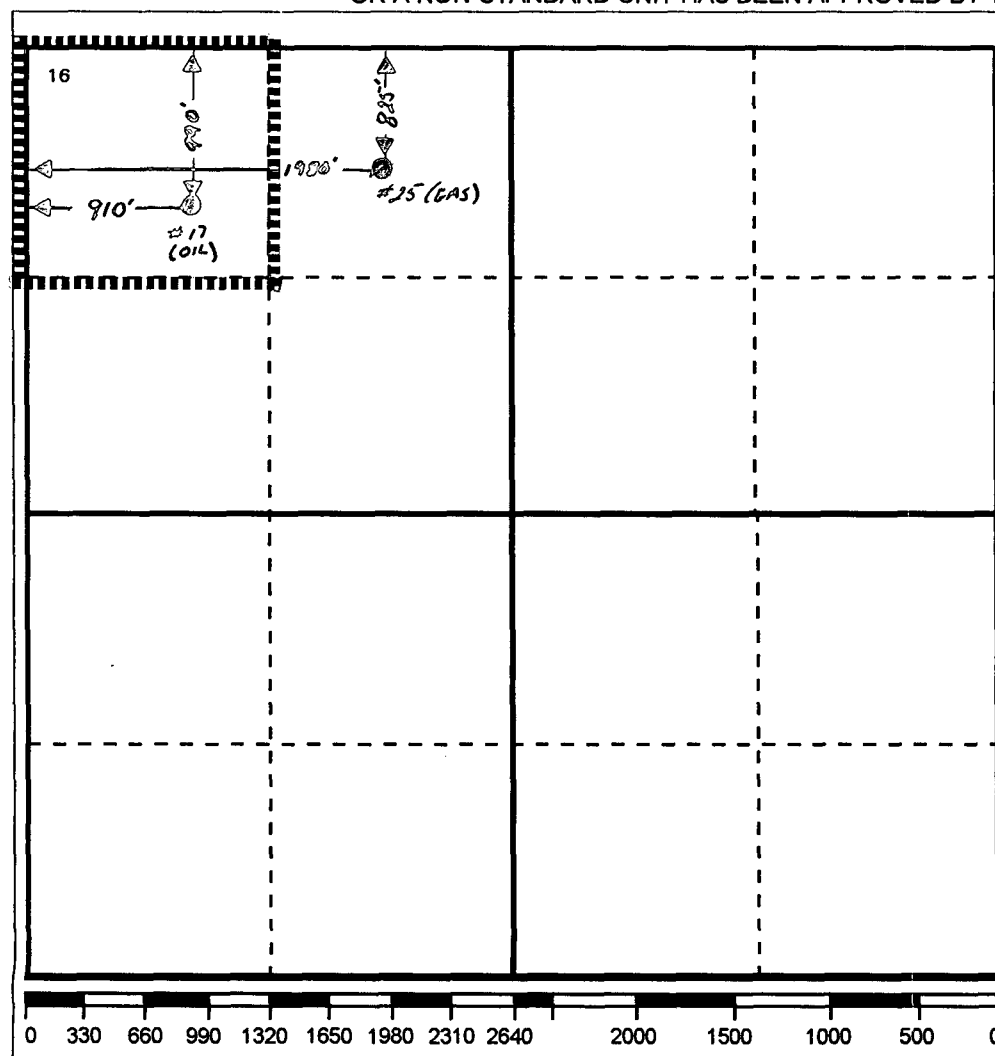
¹⁰ Surface Location

Ul or lot no. D	Section 9	Township 23-S	Range 37-E	Lot.Idn	Feet From The 990	North/South Line NORTH	Feet From The 910	East/West Line WEST	County LEA
--------------------	--------------	------------------	---------------	---------	----------------------	---------------------------	----------------------	------------------------	---------------

¹¹ Bottom Hole Location If Different From Surface

Ul or lot no.	Section	Township	Range	Lot.Idn	Feet From The	North/South Line	Feet From The	East/West Line	County
---------------	---------	----------	-------	---------	---------------	------------------	---------------	----------------	--------

¹² Dedicated Acres 40	¹³ Joint or Infill No	¹⁴ Consolidation Code	¹⁵ Order No.
-------------------------------------	-------------------------------------	----------------------------------	-------------------------

NO ALLOWABLE WILL BE ASSIGNED TO THIS COMPLETION UNTIL ALL INTERESTS HAVE BEEN CONSOLIDATED
OR A NON-STANDARD UNIT HAS BEEN APPROVED BY THE DIVISION¹⁷ OPERATOR CERTIFICATIONI hereby certify that the information
contained herein is true and complete to the
best of my knowledge and belief

Signature

Printed Name

Darrell J. Carriger

Position

Engineering Assistant

Date

12/19/94

¹⁸ SURVEYOR CERTIFICATIONI hereby certify that the well location shown
on this plat was plotted from field notes of
actual surveys made by me or under my
supervision, and that the same is true and
correct to the best of my knowledge and
belief.

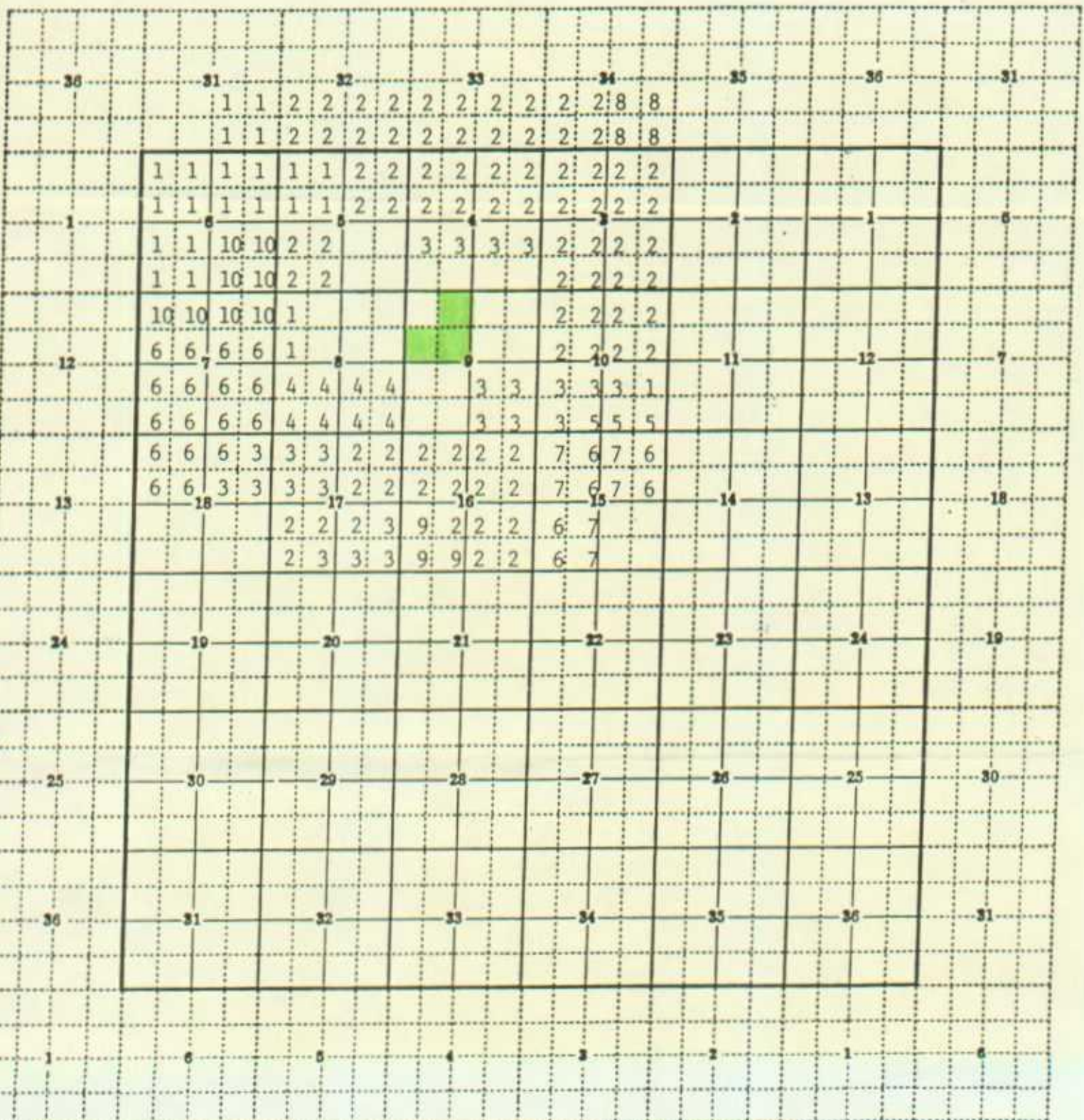
Date Surveyed

Signature & Seal of

Professional Surveyor

Certificate No.

OFFSET OPERATOR OWNERSHIP
 TEAGUE NORTH FIELD
 (BLINEBRY, TUBB, DRINKARD, ABO FORMATIONS)
 S/2 S/2 OF SECTION 4, SE/4 OF SECTION 5,
 NE/4 & E/2 NW/4 OF SECTION 8, W/2 & NE/4 OF SECTION 9
 T-23-S, R-37-E, NMPH
 LEA COUNTY, NEW MEXICO
 MAY 25, 1994



OFFSET OPERATOR OWNERSHIP
TEAGUE NORTH FIELD
(BLINEBRY, TUBE, DRINKARD, ABO FORMATIONS)
S/2 S/2 OF SECTION 4, SE/4 OF SECTION 5,
NE/4 & E/2 NW/4 OF SECTION 8, W/2 & NE/4 OF SECTION 9
T-23-S, R-37-E, NMPM
LEA COUNTY, NEW MEXICO
MAY 25, 1994

TRACT

OPERATOR

1	Unleased Minerals
2	Texaco Exploration and Production Inc.
3	Samedan Oil Corporation
4	Atlantic Richfield Company Amerada Hess Corporation
5	Ledbetter Resources Company
6	Conoco Inc., Amoco Production Company, Atlantic Richfield Company, Chevron USA Inc.
7	Conoco Inc., Fina Oil & Chemical Company
8	Anadarko Petroleum Corp., Exxon Company USA
9	Arch Petroleum Inc. New York Life Oil & Gas Partnerships
10	Sun Operating Ltd. Partnership



Receipt for Certified Mail

No Insurance Coverage Provided
Do not use for International Mail
(See Reverse)

Sent to AMERADA HESS CORPORATION	
Street and No. 1201 LOUISIANA ST E 700	
P.O., State and ZIP Code HOUSTON, TX 77002	
Postage	\$
Certified Fee	
Special Delivery Fee	
Restricted Delivery Fee	
Return Receipt Showing to Whom & Date Delivered	
Return Receipt Showing to Whom, Date, and Addressee's Address	
TOTAL Postage & Fees	\$
Postmark or Date	

PS Form 3800, March 1993



Receipt for Certified Mail

No Insurance Coverage Provided
Do not use for International Mail
(See Reverse)

Sent to SAMEDAN OIL CORP.	
Street and No.	
P.O., State and ZIP Code BOX 140, HOBBS, NM 88241	
Postage	\$
Certified Fee	
Special Delivery Fee	
Restricted Delivery Fee	
Return Receipt Showing to Whom & Date Delivered	
Return Receipt Showing to Whom, Date, and Addressee's Address	
TOTAL Postage & Fees	\$
Postmark or Date	

PS Form 3800, March 1993



Receipt for Certified Mail

No Insurance Coverage Provided
Do not use for International Mail
(See Reverse)

Sent to ATLANTIC RICHFIELD CO	
Street and No.	
P.O., State and ZIP Code BOX 1610, HOBBS, NM 88241	
Postage	\$
Certified Fee	
Special Delivery Fee	
Restricted Delivery Fee	
Return Receipt Showing to Whom & Date Delivered	
Return Receipt Showing to Whom, Date, and Addressee's Address	
TOTAL Postage & Fees	\$
Postmark or Date	

PS Form 3800, March 1993

Pool North Teague-Tubb Associated

NMP M

A 6x6 grid with numbers 1 through 36. The numbers are arranged in a boustrophedon pattern: the top row (row 1) contains numbers 6, 5, 4, 3, 2, 1 from left to right; the second row (row 2) contains 7, 8, 9, 10, 11, 12 from left to right; the third row (row 3) contains 18, 17, 16, 15, 14, 13 from left to right; the fourth row (row 4) contains 19, 20, 21, 22, 23, 24 from left to right; the fifth row (row 5) contains 30, 29, 28, 27, 26, 25 from left to right; and the bottom row (row 6) contains 31, 32, 33, 34, 35, 36 from left to right. A 2x2 square is highlighted with a thick black border, covering the cells containing numbers 8, 9, 17, and 16.

Description: NW/4 Sec. 9 (R-5353-P, 9-26-94)