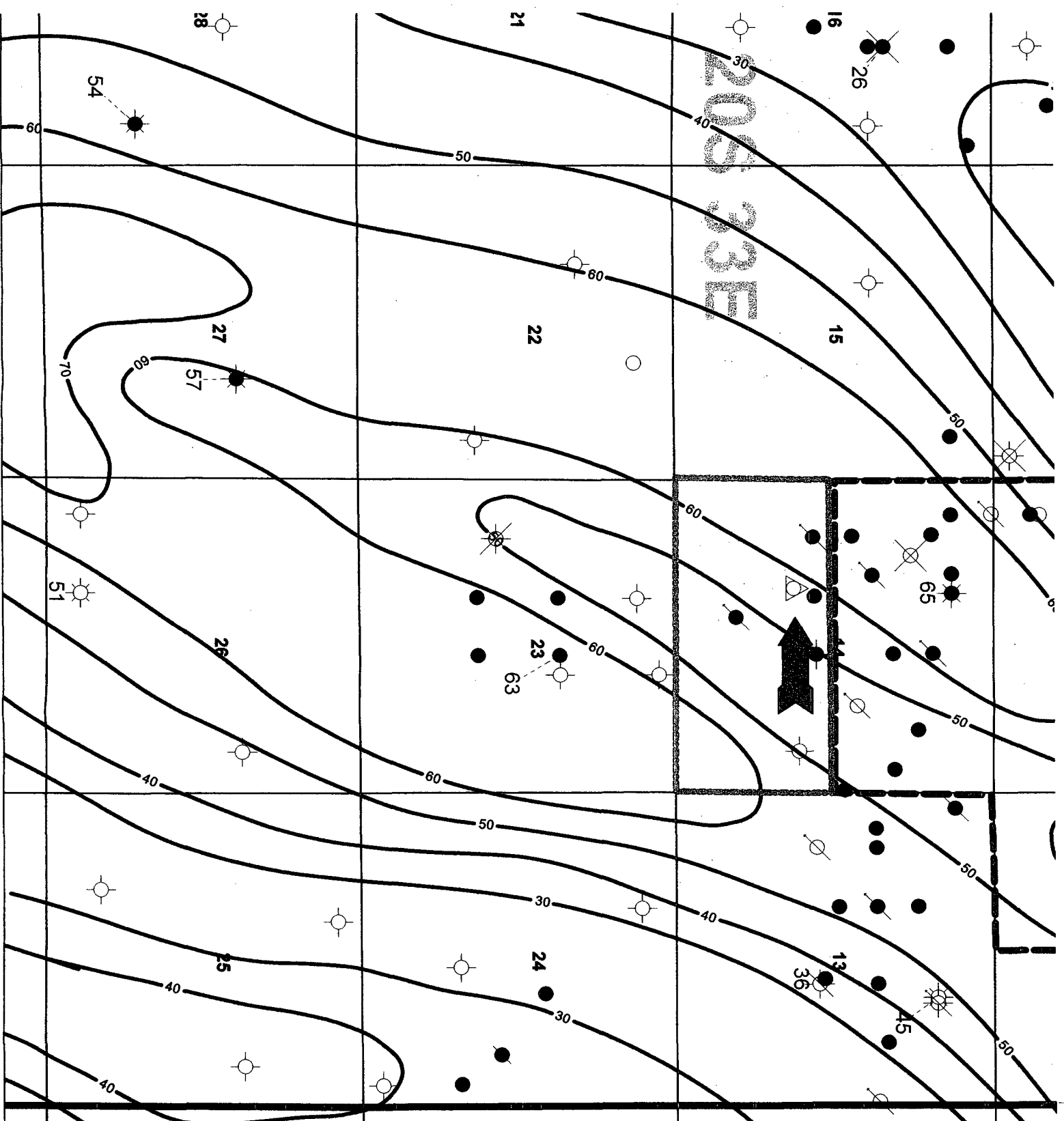


OIL CONSERVATION DIVISION
CASE NUMBER
EXHIBIT NUMBER 8



SAMSON RESOURCES CO.	
TEAS MORROW	
T-20-S, R-33-E, LEA COUNTY, NM	
ISOPACH MAP	
TOTAL MIDDLE MORROW SAND	
POSTED WELL DATA	●
Total Middle Morrow Net Sand >6% (?)	
REMARKS	
Red Dashed Line - Teas Penn Pool	
Green Dashed Line - Maverick Proration Unit	
By: REW	
June 23, 2004	