

District I
PO Box 1980, Hobbs, NM 88241-1980

District II:
PO Drawer DD, Artesia, NM 88211-0719

District III
1000 Rio Brazos Rd., Aztec, NM 87410

District IV
PO Box 2088, Santa Fe, NM 87504-2088

State of New Mexico
Energy, Minerals & Natural Resources Department

OIL CONSERVATION DIVISION
PO Box 2088
Santa Fe, NM 87504-2088

Form C-102
Revised February 21, 1994
Instructions on back
Submit to Appropriate District Office
State Lease - 4 Copies
Fee Lease - 3 Copies

☐ AMENDED REPORT

WELL LOCATION AND ACREAGE DEDICATION PLAT

*API Number	*Pool Code 72319 / 71599	*Pool Name BLANCO MESAVERDE / BASIN DAKOTA
*Property Code	*Property Name TECUMSEH	*Well Number 1E
*GRID No. 20208	*Operator Name SAN JUAN RESOURCES OF COLORADO INC.	*Elevation 5537'

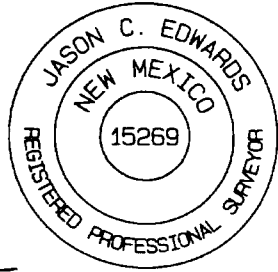
¹⁰ Surface Location

UL or lot no.	Section	Township	Range	Lot Idn	Feet from the	North/South line	Feet from the	East/West line	County
L	18	30N	11W		1455	SOUTH	1225	WEST	SAN JUAN

¹¹ Bottom Hole Location If Different From Surface

UL or lot no.	Section	Township	Range	Lot Idn	Feet from the	North/South line	Feet from the	East/West line	County
¹² Dedicated Acres 326.50 Acres - S/2					¹³ Joint or Infill	¹⁴ Consolidation Code	¹⁵ Order No.		

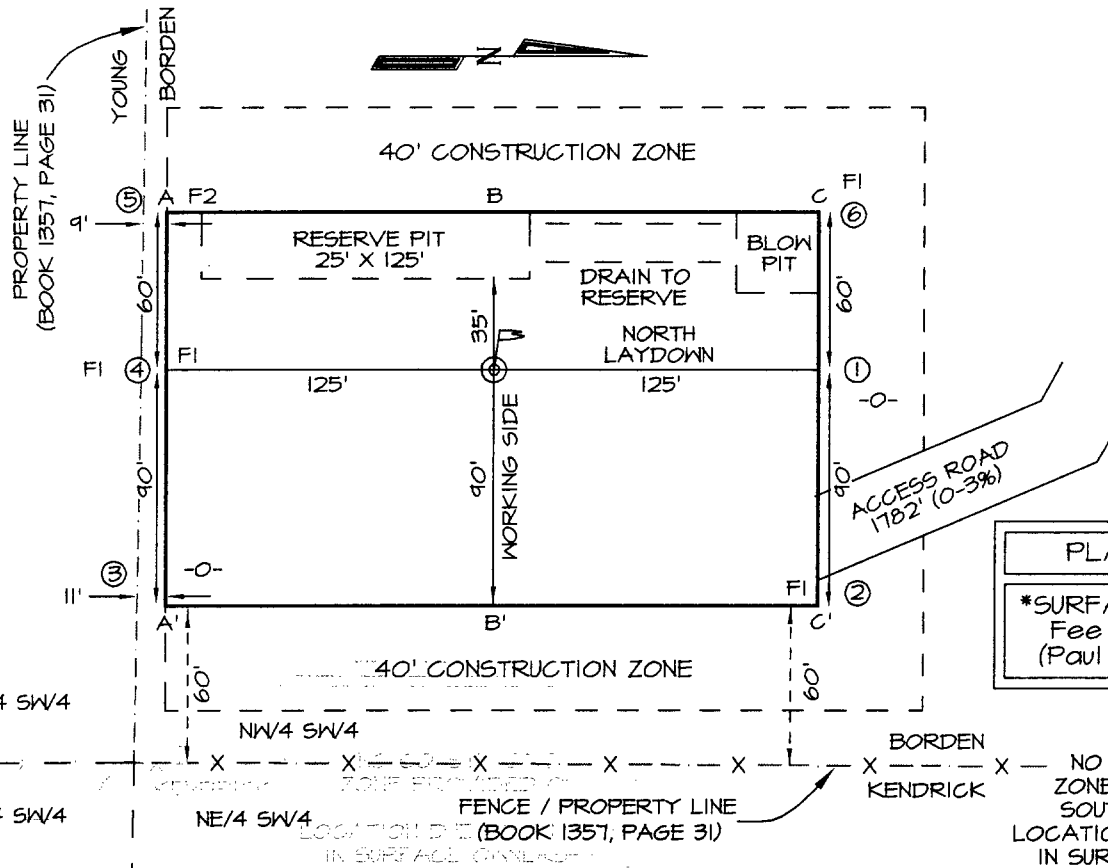
NO ALLOWABLE WILL BE ASSIGNED TO THIS COMPLETION UNTIL ALL INTERESTS HAVE BEEN CONSOLIDATED
OR A NON-STANDARD UNIT HAS BEEN APPROVED BY THE DIVISION

¹⁶ 1349.04'	1260.60'	2649.90'	¹⁷ OPERATOR CERTIFICATION I hereby certify that the information contained herein is true and complete to the best of my knowledge and belief <i>Jerome P. McHugh Jr.</i> Signature <u>Jerome P. McHugh Jr</u> Printed Name <u>President</u> Title <u>Dec 21, 2004</u> Date
LOT 1			
LOT 2			
LOT 3			
5266.80'	18		¹⁸ SURVEYOR CERTIFICATION I hereby certify that the well location shown on this plat was plotted from field notes of actual surveys made by me or under my supervision, and that the same is true and correct to the best of my belief. Survey Date: NOVEMBER 17, 2004 Signature and Seal of Professional Surveyor  <u>Jason C. Edwards</u> Certificate Number 15269
LOT 4			
1225'			
1455'			
1384.02'	1275.12'	2620.86'	

BEFORE THE
OIL CONSERVATION DIVISION
Case No. 13391 Exhibit No. 2
Submitted By:
San Juan Resources
Hearing Date: January 6, 2005

SAN JUAN RESOURCES OF COLORADO, INC. TECUMSEH #1E
1455' FSL & 1225' FWL, SECTION 18, T30N, R11W, NMPM
SAN JUAN COUNTY, NEW MEXICO ELEVATION: 5537'

LATITUDE: 36.80900°
 LONGITUDE: 108.03610°
 DATUM: NAD1927



PLAT NOTE:

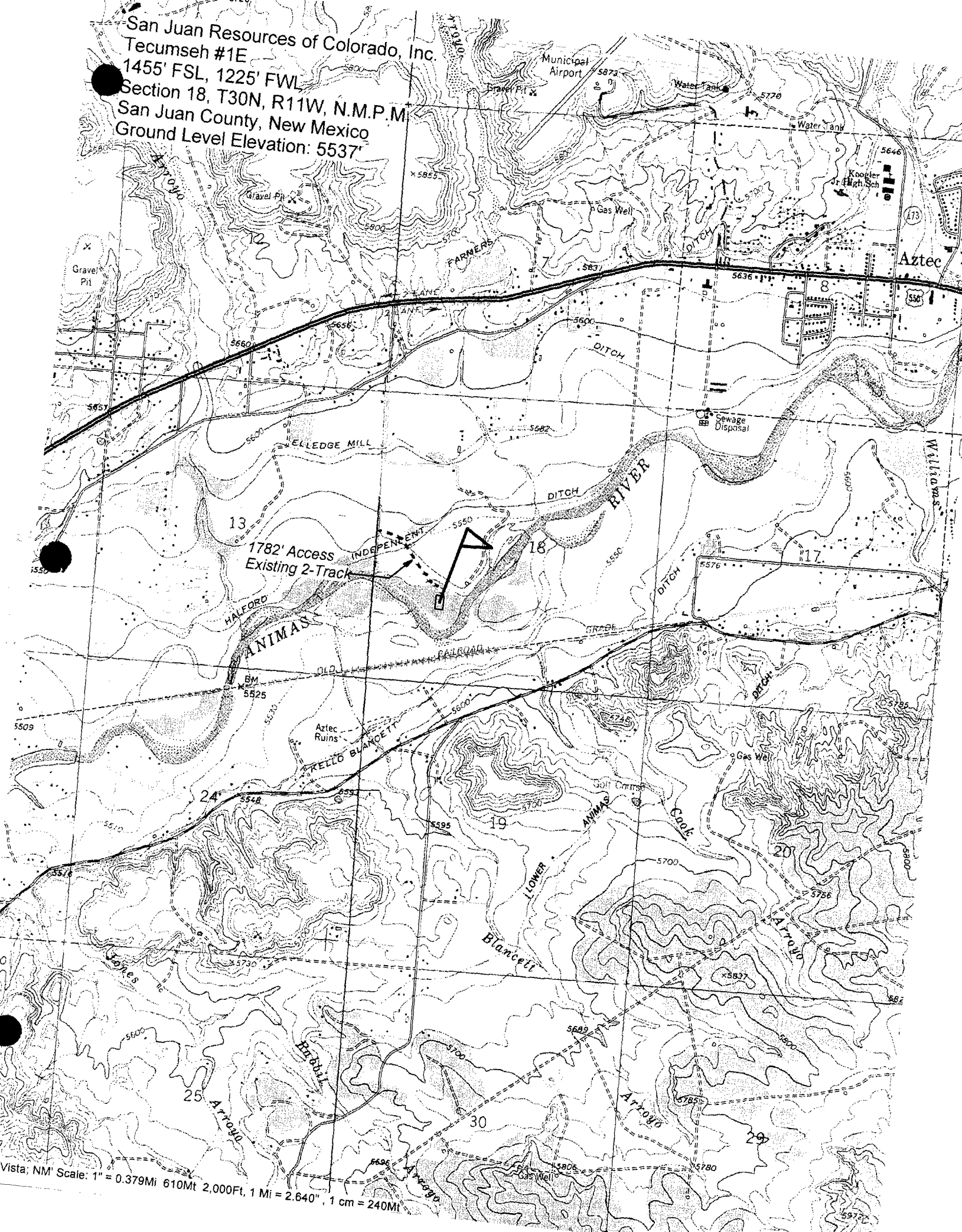
SURFACE OWNER
 Fee Ownership
 (Paul A. Borden)

A-A'							
5547'							
5537'							
5527'							

B-B'							
5547'							
5537'							
5527'							

C-C'							
5547'							
5537'							
5527'							

San Juan Resources of Colorado, Inc.
Tecumseh #1E
1455' FSL, 1225' FWL
Section 18, T30N, R11W, N.M.P.M.
San Juan County, New Mexico
Ground Level Elevation: 5537'



1782' Access
Existing 2-Track