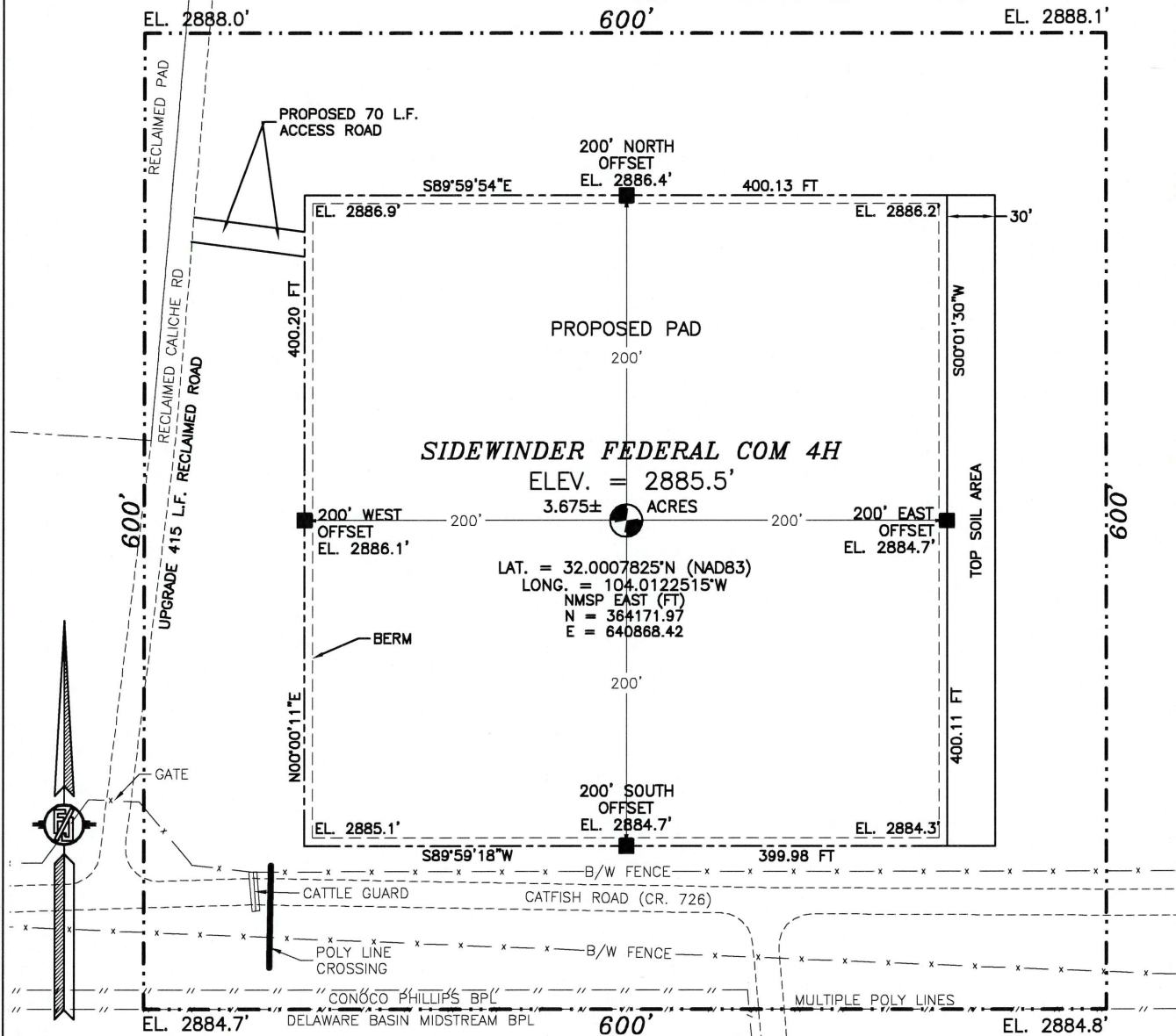


SITE MAP

NOTE: LATITUDE AND LONGITUDE COORDINATES ARE SHOWN USING THE NORTH AMERICAN DATUM OF 1983 (NAD83) IN DECIMAL DEGREE FORMAT. LISTED NEW MEXICO STATE PLANE EAST COORDINATES ARE GRID (NAD83), ELEVATION VALUES ARE NAVD88. BASIS OF BEARING AND DISTANCES USED ARE NEW MEXICO STATE PLANE EAST COORDINATES MODIFIED TO THE SURFACE.



010 50 100 200
SCALE 1" = 100'

DIRECTIONS TO LOCATION

FROM THE INTERSECTION OF HWY 285 (PECOS HWY) AND CR. 726 (CATFISH ROAD), JUST ON THE NORTH SIDE OF THE NEW MEXICO/TEXAS BORDER, GO EAST ON CR. 726 APPROX. 1.1 MILE TO A RECLAIMED ROAD ON LEFT (NORTH). TURN LEFT GO NORTH 475' TO A ROAD SURVEY ON RIGHT (EAST). GO EAST 70' TO THE NORTHWEST PAD CORNER.

I, FILMON F. JARAMILLO, A NEW MEXICO REGISTERED PROFESSIONAL SURVEYOR CERTIFY THAT I, DIRECTED AND AM RESPONSIBLE FOR THIS SURVEY, THAT THIS SURVEY IS TRUE AND CORRECT TO THE BEST OF MY KNOWLEDGE AND BELIEF, AND THIS SURVEY AND PLAT MEET THE MINIMUM STANDARDS FOR SURVEYING IN NEW MEXICO.

COG OPERATING, LLC
SIDEWINDER FEDERAL COM 4H
LOCATED 248 FT. FROM THE SOUTH LINE
AND 950 FT. FROM THE WEST LINE OF
SECTION 32, TOWNSHIP 26 SOUTH,
RANGE 29 EAST, N.M.P.M.
EDDY COUNTY, STATE OF NEW MEXICO

MAY 15, 2017

SURVEY NO. 4877C

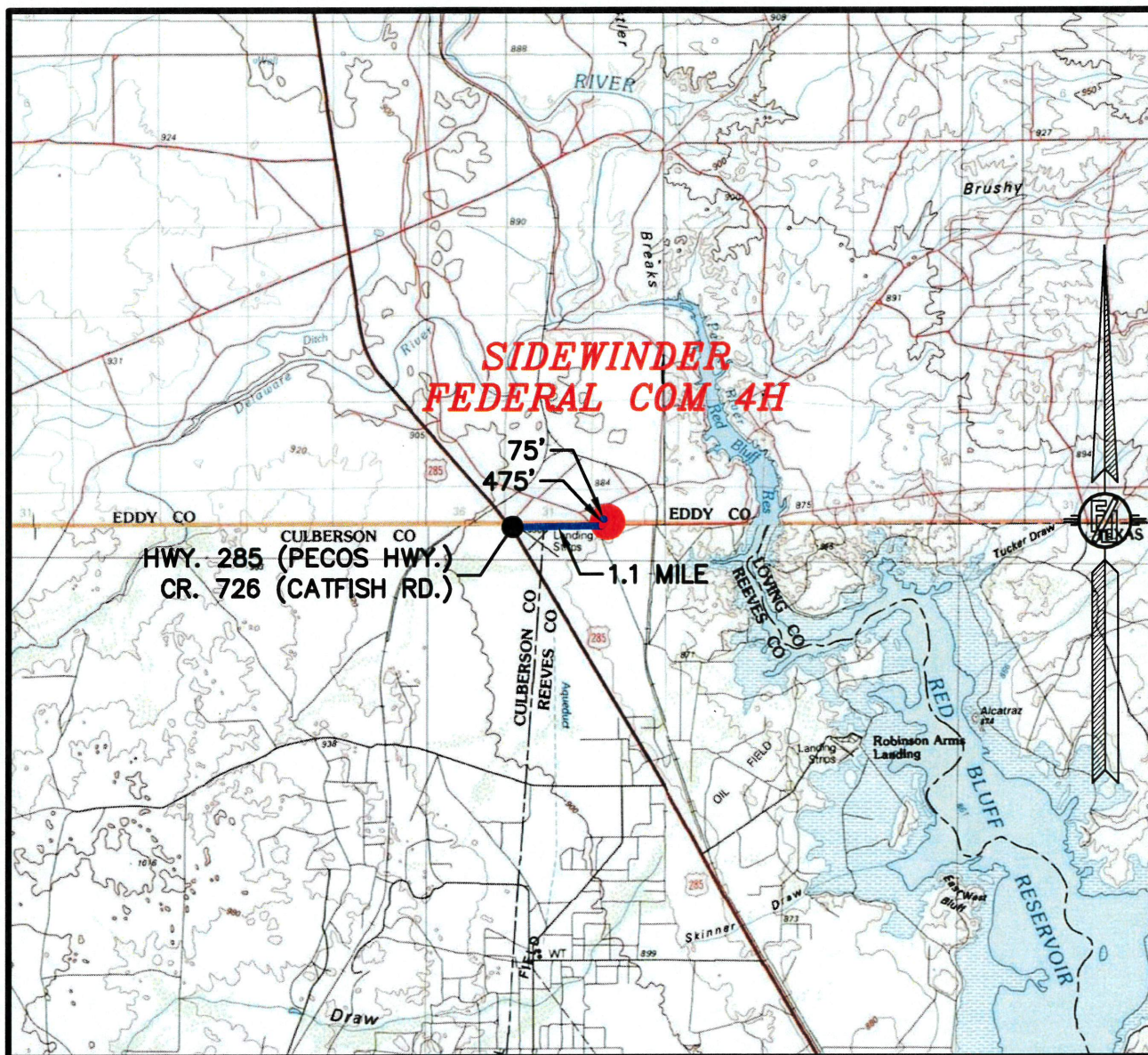
MADRON SURVEYING, INC.

301 SOUTH CANAL
(575) 234-3341

CARLSBAD, NEW MEXICO

CARLSBAD, NEW MEXICO

SECTION 32, TOWNSHIP 26 SOUTH, RANGE 29 EAST, N.M.P.M.
EDDY COUNTY, STATE OF NEW MEXICO
VICINITY MAP



DISTANCES IN MILES

NOT TO SCALE

DIRECTIONS TO LOCATION

FROM THE INTERSECTION OF HWY 285 (PECOS HWY) AND CR. 726 (CATFISH ROAD), JUST ON THE NORTH SIDE OF THE NEW MEXICO/TEXAS BORDER, GO EAST ON CR. 726 APPROX. 1.1 MILE TO A RECLAIMED ROAD ON LEFT (NORTH), TURN LEFT GO NORTH 475' TO A ROAD SURVEY ON RIGHT (EAST), GO EAST 70' TO THE NORTHWEST PAD CORNER.

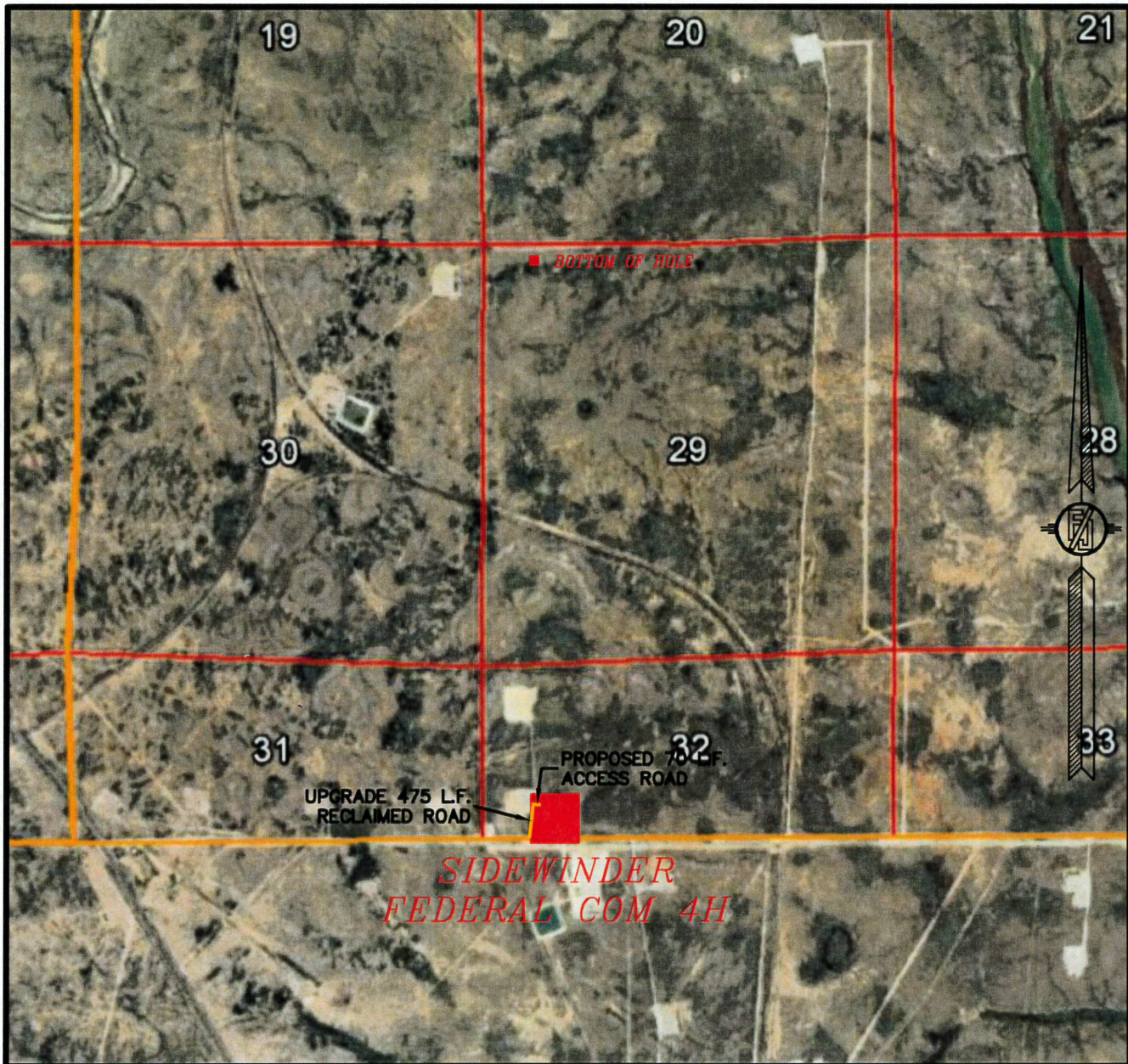
COG OPERATING, LLC
SIDEWINDER FEDERAL COM 4H
LOCATED 248 FT. FROM THE SOUTH LINE
AND 950 FT. FROM THE WEST LINE OF
SECTION 32, TOWNSHIP 26 SOUTH,
RANGE 29 EAST, N.M.P.M.
EDDY COUNTY, STATE OF NEW MEXICO

MAY 15, 2017

MADRON SURVEYING, INC. 301 SOUTH CANAL (575) 234-3341

SURVEY NO. 4877C
CARLSBAD, NEW MEXICO

SECTION 32, TOWNSHIP 26 SOUTH, RANGE 29 EAST, N.M.P.M.
EDDY COUNTY, STATE OF NEW MEXICO
AERIAL PHOTO



NOT TO SCALE
AERIAL PHOTO:
GOOGLE EARTH
NOV. 2015

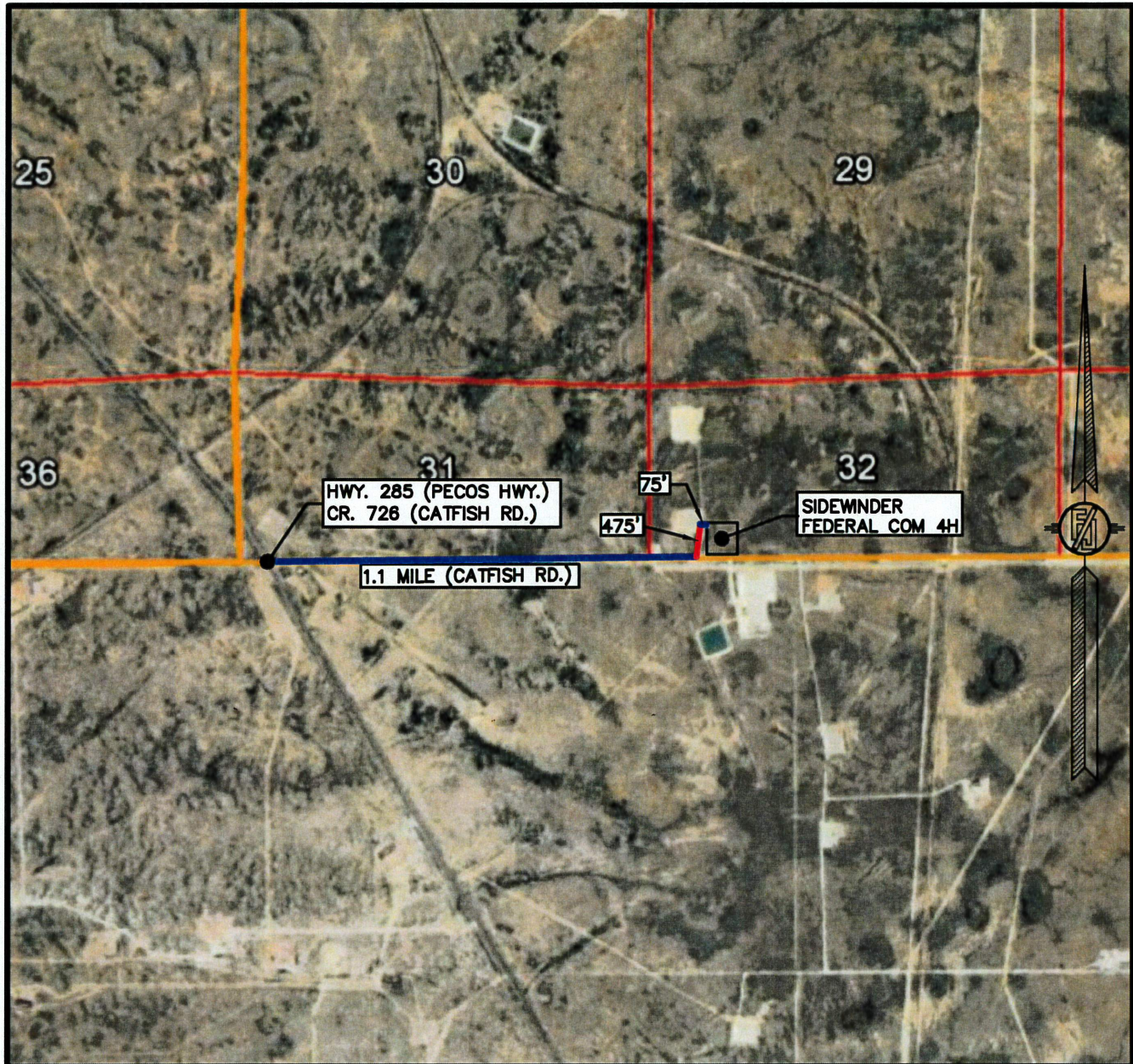
COG OPERATING, LLC
SIDEWINDER FEDERAL COM 4H
LOCATED 248 FT. FROM THE SOUTH LINE
AND 950 FT. FROM THE WEST LINE OF
SECTION 32, TOWNSHIP 26 SOUTH,
RANGE 29 EAST, N.M.P.M.
EDDY COUNTY, STATE OF NEW MEXICO

MAY 15, 2017

SURVEY NO. 4877C

MADRON SURVEYING, INC. 301 SOUTH CANAL (575) 234-3341 CARLSBAD, NEW MEXICO

SECTION 32, TOWNSHIP 26 SOUTH, RANGE 29 EAST, N.M.P.M.
EDDY COUNTY, STATE OF NEW MEXICO
AERIAL ACCESS ROUTE MAP



NOT TO SCALE
AERIAL PHOTO:
GOOGLE EARTH
NOV. 2015

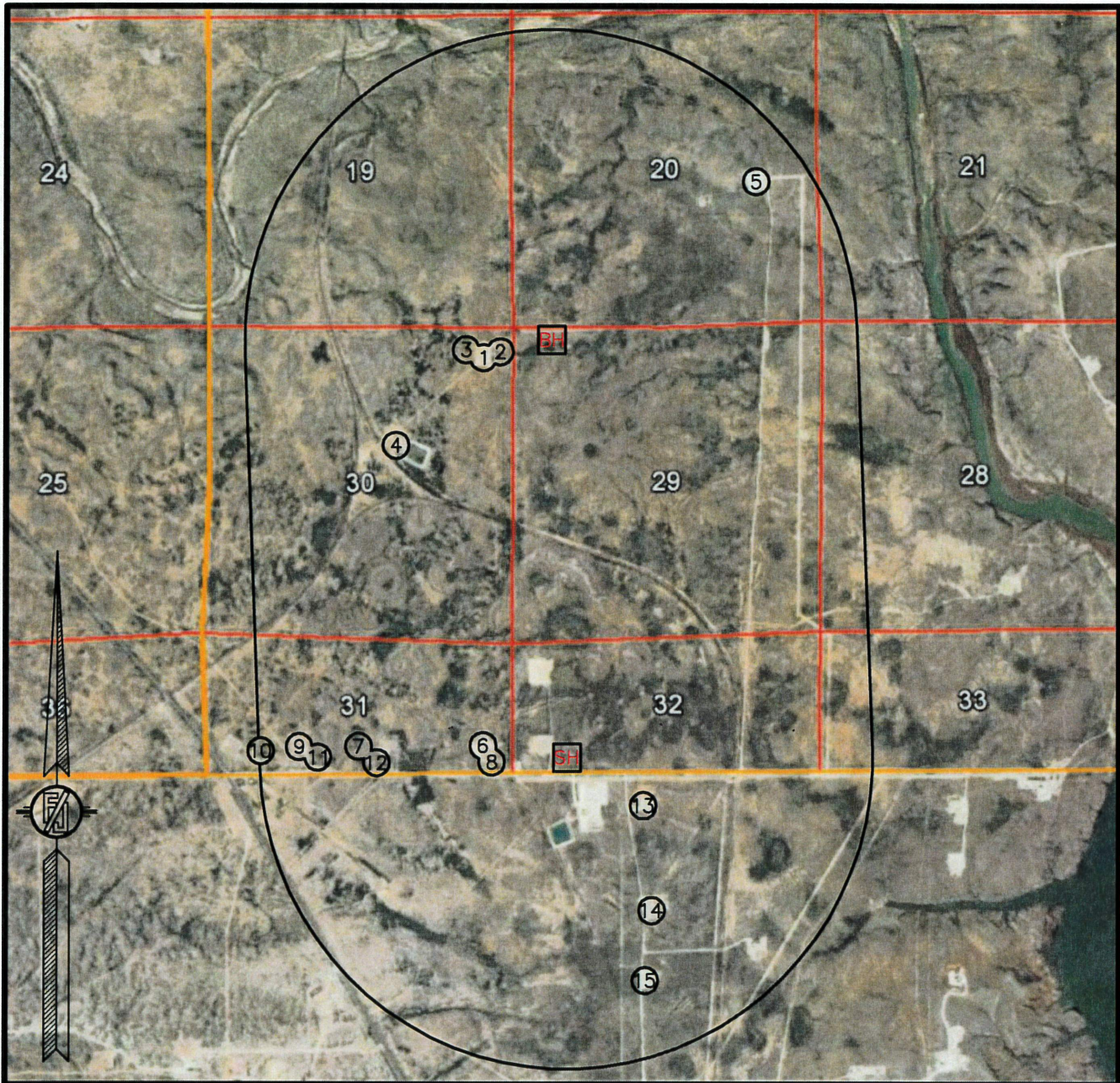
COG OPERATING, LLC
SIDEWINDER FEDERAL COM 4H
LOCATED 248 FT. FROM THE SOUTH LINE
AND 950 FT. FROM THE WEST LINE OF
SECTION 32, TOWNSHIP 26 SOUTH,
RANGE 29 EAST, N.M.P.M.
EDDY COUNTY, STATE OF NEW MEXICO

MAY 15, 2017

SURVEY NO. 4877C

MADRON SURVEYING, INC. 301 SOUTH CANAL (575) 234-3341 CARLSBAD, NEW MEXICO

1-MILE MAP



NOT TO SCALE
AERIAL PHOTO:
GOOGLE EARTH
NOV. 2015

- SH SURFACE LOCATION
- BH BOTTOM OF HOLE
- XX WELLS WITHIN 1 MILE

COC OPERATING, LLC
SIDEWINDER FEDERAL COM 4H
LOCATED 248 FT. FROM THE SOUTH LINE
AND 950 FT. FROM THE WEST LINE OF
SECTION 32, TOWNSHIP 26 SOUTH,
RANGE 29 EAST, N.M.P.M.
EDDY COUNTY, STATE OF NEW MEXICO

MAY 15, 2017

MADRON SURVEYING, INC. 301 SOUTH CANAL (575) 234-3341 SURVEY NO. 4877C
CARLSBAD, NEW MEXICO