

District I
1625 N. French Dr., Hobbs, NM 88240
Phone: (575) 393-6161 Fax: (575) 393-0720
District II
811 S. First St., Artesia, NM 88210
Phone: (575) 748-1283 Fax: (575) 748-9720
District III
1000 Rio Brazos Road, Aztec, NM 87410
Phone: (505) 334-6178 Fax: (505) 334-6170
District IV
1220 S. St. Francis Dr., Santa Fe, NM 87505
Phone: (505) 476-3460 Fax: (505) 476-3462

State of New Mexico
Energy, Minerals & Natural Resources Department
OIL CONSERVATION DIVISION
1220 South St. Francis Dr.
Santa Fe, NM 87505

Form C-102
Revised August 1, 2011
Submit one copy to appropriate
District Office
☐ AMENDED REPORT

WELL LOCATION AND ACREAGE DEDICATION PLAT

¹ API Number	² Pool Code	³ Pool Name
⁴ Property Code	⁵ Property Name RANA SALADA FED COM 6 4 23S 29E 3B	⁶ Well Number 1H
⁷ OGRID No. 372920	⁸ Operator Name NOVO OIL AND GAS NORTHERN DELAWARE, LLC	⁹ Elevation 3039.4

¹⁰ Surface Location

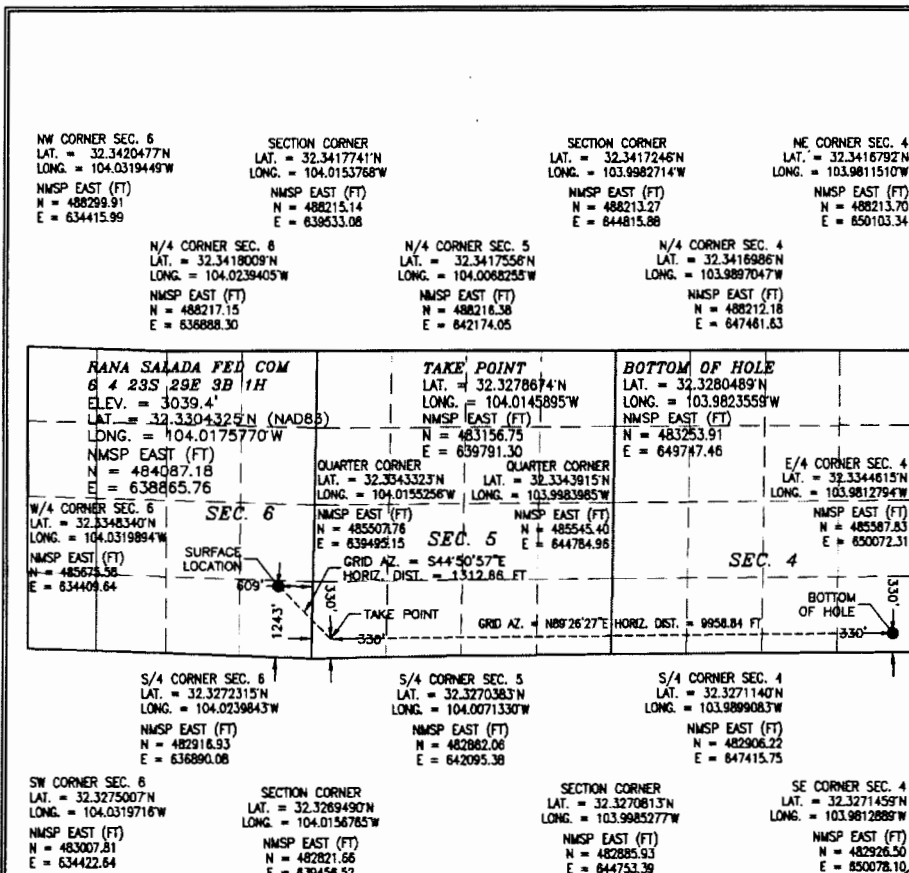
UL or lot no. P	Section 6	Township 23 S	Range 29 E	Lot Idn	Feet from the 1243	North/South line SOUTH	Feet from the 609	East/West line EAST	County EDDY
--------------------	--------------	------------------	---------------	---------	-----------------------	---------------------------	----------------------	------------------------	----------------

¹¹ Bottom Hole Location If Different From Surface

UL or lot no. P	Section 4	Township 23 S	Range 29 E	Lot Idn	Feet from the 330	North/South line SOUTH	Feet from the 330	East/ West line EAST	County EDDY
--------------------	--------------	------------------	---------------	---------	----------------------	---------------------------	----------------------	-------------------------	----------------

¹² Dedicated Acres	¹³ Joint or Infill	¹⁴ Consolidation Code	¹⁵ Order No.
-------------------------------	-------------------------------	----------------------------------	-------------------------

No allowable will be assigned to this completion until all interests have been consolidated or a non-standard unit has been approved by the division.



¹⁷ OPERATOR CERTIFICATION

I hereby certify that the information contained herein is true and complete to the best of my knowledge and belief, and that this organization either owns a working interest or unleased mineral interest in the land including the proposed bottom hole location or has a right to drill this well at this location pursuant to a contract with an owner of such a mineral or working interest, or to a voluntary pooling agreement or a compulsory pooling order heretofore entered by the division.

Signature

Date

Printed Name

E-mail Address

¹⁸ SURVEYOR CERTIFICATION

I hereby certify that the well location shown on this plat was plotted from field notes of actual surveys made by me or under my supervision, and that the same is true and correct to the best of my belief.

MAY 8, 2018

Date of Survey

Signature and Seal of Professional Surveyor

Certificate Number: FILLIMON F. JARAMILLO, PLS 12797

SURVEY NO. 6155

District I
1625 N. French Dr., Hobbs, NM 88240
Phone: (575) 393-6161 Fax: (575) 393-0720
District II
811 S. First St., Artesia, NM 88210
Phone: (575) 748-1283 Fax: (575) 748-9720
District III
1000 Rio Brazos Road, Aztec, NM 87410
Phone: (505) 334-6178 Fax: (505) 334-6170
District IV
1220 S. St. Francis Dr., Santa Fe, NM 87505
Phone: (505) 476-3460 Fax: (505) 476-3462

State of New Mexico
Energy, Minerals & Natural Resources Department
OIL CONSERVATION DIVISION
1220 South St. Francis Dr.
Santa Fe, NM 87505

Form C-102
Revised August 1, 2011
Submit one copy to appropriate
District Office
☐ AMENDED REPORT

WELL LOCATION AND ACREAGE DEDICATION PLAT

¹ API Number	² Pool Code	³ Pool Name
⁴ Property Code	⁵ Property Name RANA SALADA FED COM 0504	⁶ Well Number 134H
⁷ OGRID No. 372920	⁸ Operator Name NOVO OIL AND GAS NORTHERN DELAWARE, LLC	⁹ Elevation 3039.4

¹⁰ Surface Location


UL or lot no. P	Section 6	Township 23 S	Range 28 E	Lot Idn	Feet from the 1243	North/South line SOUTH	Feet from the 609	East/West line EAST	County EDDY
--------------------	--------------	------------------	---------------	---------	-----------------------	---------------------------	----------------------	------------------------	----------------

¹¹ Bottom Hole Location If Different From Surface

UL or lot no. P	Section 4	Township 23 S	Range 29 E	Lot Idn	Feet from the 330	North/South line SOUTH	Feet from the 330	East/ West line EAST	County EDDY
--------------------	--------------	------------------	---------------	---------	----------------------	---------------------------	----------------------	-------------------------	----------------

¹² Dedicated Acres	¹³ Joint or Infill	¹⁴ Consolidation Code	¹⁵ Order No.
-------------------------------	-------------------------------	----------------------------------	-------------------------

No allowable will be assigned to this completion until all interests have been consolidated or a non-standard unit has been approved by the division.

<p>NW CORNER SEC. 6 LAT. = 32.3420477°N LONG. = 104.0319449°W NMSP EAST (FT) N = 488299.91 E = 634415.99</p> <p>SECTION CORNER LAT. = 32.3417741°N LONG. = 104.0153768°W NMSP EAST (FT) N = 488215.14 E = 639533.08</p> <p>N/4 CORNER SEC. 6 LAT. = 32.3418009°N LONG. = 104.0239405°W NMSP EAST (FT) N = 488217.15 E = 636888.30</p> <p>N/4 CORNER SEC. 5 LAT. = 32.3417556°N LONG. = 104.0068255°W NMSP EAST (FT) N = 488216.38 E = 642174.05</p> <p>N/4 CORNER SEC. 4 LAT. = 32.3416986°N LONG. = 103.9897047°W NMSP EAST (FT) N = 488212.18 E = 647461.63</p> <p>RANA SALADA FED COM 0504 134H ELEV. = 3039.4' LAT. = 32.3304325°N (NAD83) LONG. = 104.0175770°W NMSP EAST (FT) N = 484087.18 E = 638865.76</p> <p>TAKE POINT LAT. = 32.3278674°N LONG. = 104.0145895°W NMSP EAST (FT) N = 483156.75 E = 639791.30</p> <p>BOTTOM OF HOLE LAT. = 32.3280489°N LONG. = 103.9823559°W NMSP EAST (FT) N = 483253.91 E = 649747.46</p> <p>QUARTER CORNER LAT. = 32.3343323°N LONG. = 104.0155256°W NMSP EAST (FT) N = 485507.76 E = 639495.15</p> <p>QUARTER CORNER LAT. = 32.3343915°N LONG. = 103.9883985°W NMSP EAST (FT) N = 485545.40 E = 644784.96</p> <p>E/4 CORNER SEC. 4 LAT. = 32.3344615°N LONG. = 103.9812794°W NMSP EAST (FT) N = 485587.83 E = 650072.31</p> <p>W/4 CORNER SEC. 6 LAT. = 32.3348340°N LONG. = 104.0319894°W NMSP EAST (FT) N = 485675.58 E = 634408.64</p> <p>SEC. 6 SURFACE LOCATION 609'</p> <p>SEC. 5 GRID AZ. = S44°50'57"E HORIZ. DIST. = 1312.66 FT</p> <p>SEC. 4 GRID AZ. = N89°26'27"E HORIZ. DIST. = 9958.84 FT</p> <p>S/4 CORNER SEC. 6 LAT. = 32.3272315°N LONG. = 104.0239843°W NMSP EAST (FT) N = 482916.93 E = 636890.08</p> <p>S/4 CORNER SEC. 5 LAT. = 32.3270383°N LONG. = 104.0071330°W NMSP EAST (FT) N = 482882.06 E = 642095.38</p> <p>S/4 CORNER SEC. 4 LAT. = 32.3271140°N LONG. = 103.9899083°W NMSP EAST (FT) N = 482906.22 E = 647415.75</p> <p>SW CORNER SEC. 6 LAT. = 32.3275007°N LONG. = 104.0319716°W NMSP EAST (FT) N = 483007.81 E = 634422.64</p> <p>SECTION CORNER LAT. = 32.3269490°N LONG. = 104.0156765°W NMSP EAST (FT) N = 482821.66 E = 639456.52</p> <p>SECTION CORNER LAT. = 32.3270813°N LONG. = 103.9885277°W NMSP EAST (FT) N = 482885.93 E = 644753.39</p> <p>SE CORNER SEC. 4 LAT. = 32.3271459°N LONG. = 103.9812889°W NMSP EAST (FT) N = 482926.50 E = 650078.10</p>	<p>¹⁷ OPERATOR CERTIFICATION</p> <p>I hereby certify that the information contained herein is true and complete to the best of my knowledge and belief, and that this organization either owns a working interest or unleased mineral interest in the land including the proposed bottom hole location or has a right to drill this well at this location pursuant to a contract with an owner of such a mineral or working interest, or to a voluntary pooling agreement or a compulsory pooling order heretofore entered by the division.</p> <p>Signature _____ Date _____</p> <p>Printed Name _____</p> <p>E-mail Address _____</p> <p>¹⁸ SURVEYOR CERTIFICATION</p> <p>I hereby certify that the well location shown on this plat was plotted from field notes of actual surveys made by me or under my supervision, and that the same is true and correct to the best of my belief.</p> <p>JUNE 26, 2018</p> <p>Date of Survey _____</p> <p></p> <p>Signature and Seal of Professional Surveyor _____</p> <p>Certificate Number FILIMON F. JARAMILLO, PLS 12797</p> <p>SURVEY NO. 6155A</p>
---	--