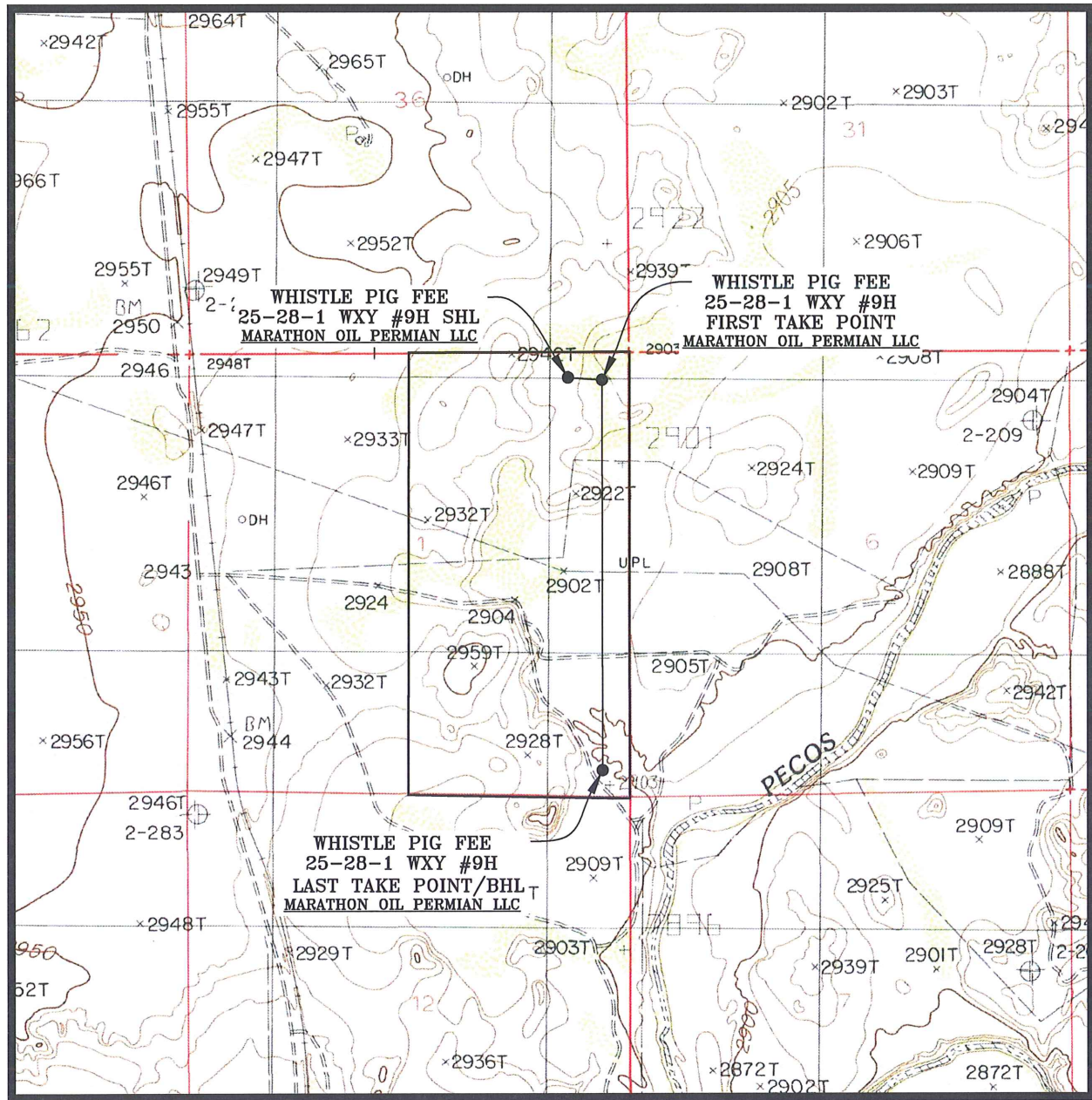


LOCATION VERIFICATION MAP



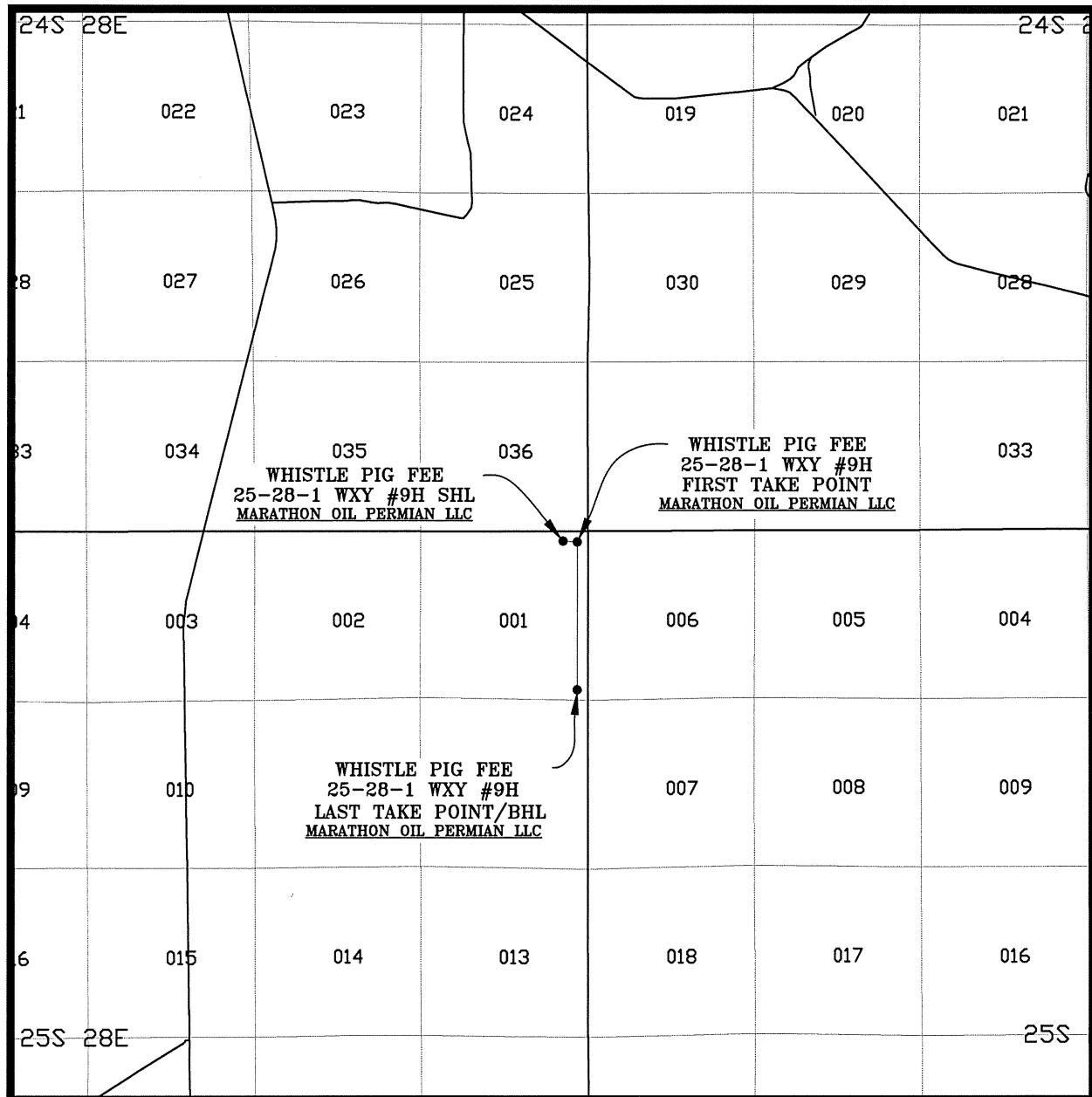
SEC. 1 TWP. 25-S RGE. 28-E
 SURVEY: N.M.P.M.
 COUNTY: EDDY
 DESCRIPTION: 300' FNL & 740' FEL
 ELEVATION: 2912'
 OPERATOR: MARATHON OIL PERMIAN LLC
 LEASE: WHISTLE PIG FEE 25-28-1
 U.S.G.S. TOPOGRAPHIC MAP: MALAGA, N.M.

SCALE: 1" = 2000'
 CONTOUR INTERVAL = 10'

SHEET 2 OF 3

PREPARED BY:
 R-SQUARED GLOBAL, LLC
 1309 LOUISVILLE AVENUE, MONROE, LA 71201
 318-323-6900 OFFICE
 JOB No. R3913_003

VICINITY MAP



SCALE: 1" = 1 MILE

SEC. 1 TWP. 25-S RGE. 28-E
SURVEY: N.M.P.M.
COUNTY: EDDY
DESCRIPTION: 300' FNL & 740' FEL
ELEVATION: 2912'
OPERATOR: MARATHON OIL PERMIAN LLC
LEASE: WHISTLE PIG FEE 25-28-1
U.S.G.S. TOPOGRAPHIC MAP: MALAGA, N.M.

SHEET 3 OF 3

PREPARED BY:
R-SQUARED GLOBAL, LLC
1309 LOUISVILLE AVENUE, MONROE, LA 71201
318-323-6900 OFFICE
JOB No. R3913_003