

District I
1625 N. French Dr., Hobbs, NM 88240
Phone: (575) 393-6161 Fax: (575) 393-0720

District II
811 S. First St., Artesia, NM 88210
Phone: (575) 748-1283 Fax: (575) 748-9720

District III
1000 Rio Brazos Road, Aztec, NM 87410
Phone: (505) 334-6178 Fax: (505) 334-6170

District IV
1220 S. St. Francis Dr., Santa Fe, NM 87505
Phone: (505) 476-3460 Fax: (505) 476-3462

State of New Mexico
Energy, Minerals & Natural Resources Department
OIL CONSERVATION DIVISION
1220 South St. Francis Dr.
Santa Fe, NM 87505

Form C-102
Revised August 1, 2011
Submit one copy to appropriate
District Office

☐ AMENDED REPORT

WELL LOCATION AND ACREAGE DEDICATION PLAT

¹ API Number	² Pool Code	³ Pool Name
⁴ Property Code	⁵ Property Name RANA SALADA FED COM 0504	⁶ Well Number 134H
⁷ OGRID No. 372920	⁸ Operator Name NOVO OIL AND GAS NORTHERN DELAWARE, LLC	⁹ Elevation 3039.4

¹⁰ Surface Location

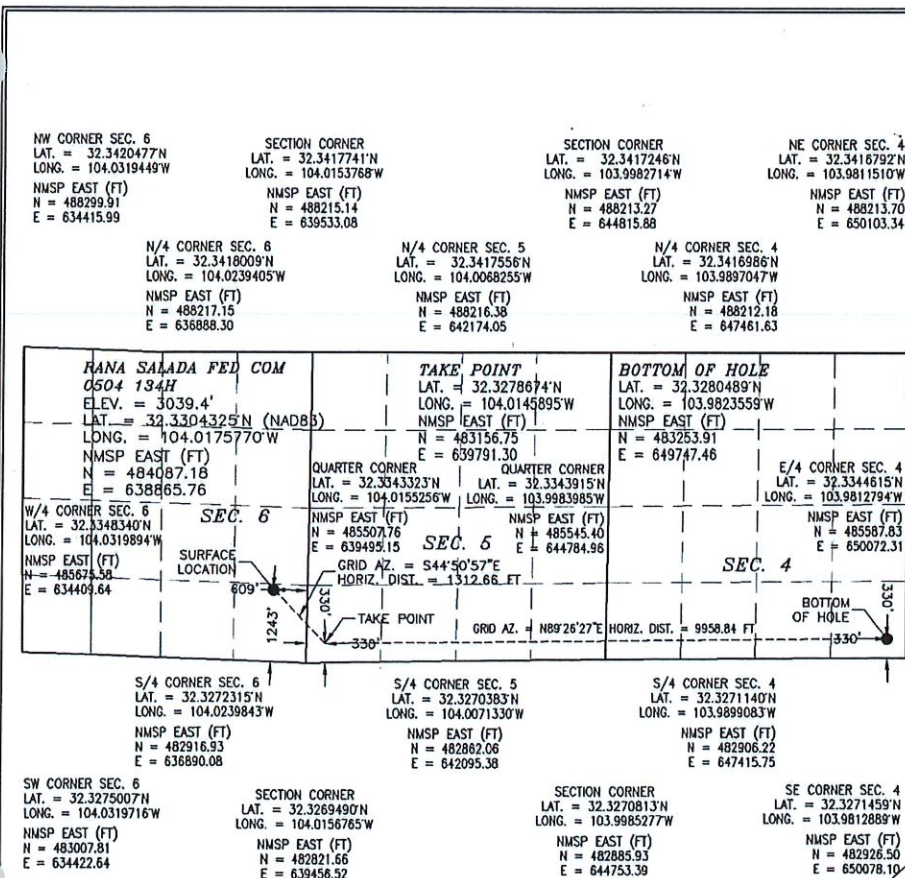
UL or lot no. P	Section 6	Township 23 S	Range 28 E	Lot Idn	Feet from the 1243	North/South line SOUTH	Feet from the 609	East/West line EAST	County EDDY
---------------------------	---------------------	-------------------------	----------------------	---------	------------------------------	----------------------------------	-----------------------------	-------------------------------	-----------------------

¹¹ Bottom Hole Location If Different From Surface

UL or lot no. P	Section 4	Township 23 S	Range 29 E	Lot Idn	Feet from the 330	North/South line SOUTH	Feet from the 330	East/ West line EAST	County EDDY
---------------------------	---------------------	-------------------------	----------------------	---------	-----------------------------	----------------------------------	-----------------------------	--------------------------------	-----------------------

¹² Dedicated Acres	¹³ Joint or Infill	¹⁴ Consolidation Code	¹⁵ Order No.
-------------------------------	-------------------------------	----------------------------------	-------------------------

No allowable will be assigned to this completion until all interests have been consolidated or a non-standard unit has been approved by the division.



¹⁷ OPERATOR CERTIFICATION

I hereby certify that the information contained herein is true and complete to the best of my knowledge and belief, and that this organization either owns a working interest or unleased mineral interest in the land including the proposed bottom hole location or has a right to drill this well at this location pursuant to a contract with an owner of such a mineral or working interest, or to a voluntary pooling agreement or a compulsory pooling order heretofore entered by the division.

Signature _____ Date _____

Printed Name _____

E-mail Address _____

¹⁸ SURVEYOR CERTIFICATION

I hereby certify that the well location shown on this plat was plotted from field notes of actual surveys made by me or under my supervision, and that the same is true and correct to the best of my belief.

JUNE 26, 2018

Date of Survey

Signature and Seal of Professional Surveyor

Certificate Number FILIMON F. JARAMILLO, PLS 12797

SURVEY NO. 6155A

**SECTION 6, TOWNSHIP 23 SOUTH, RANGE 29 EAST, N.M.P.M.
EDDY COUNTY, STATE OF NEW MEXICO
SITE MAP**

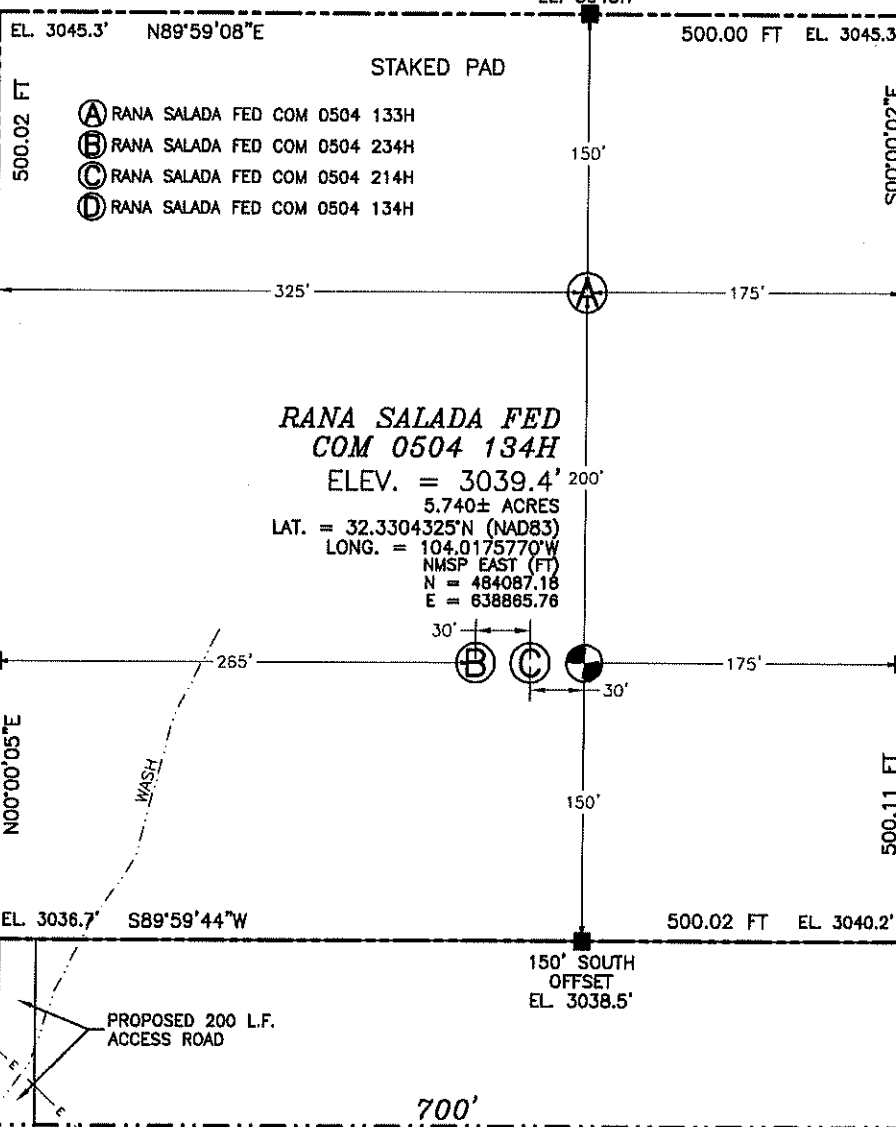
EL. 3047.2'

700'

EL. 3046.4'

NOTE: LATITUDE AND LONGITUDE COORDINATES ARE SHOWN USING THE NORTH AMERICAN DATUM OF 1983 (NAD83). LISTED NEW MEXICO STATE PLANE EAST COORDINATES ARE GRID (NAD83). BASIS OF BEARING AND DISTANCES USED ARE NEW MEXICO STATE PLANE EAST COORDINATES MODIFIED TO THE SURFACE. ELEVATION VALUES ARE NAVD88.

350' NORTH
OFFSET
EL. 3043.7'



010 50 100 200

SCALE 1" = 100'

DIRECTIONS TO LOCATION

FROM THE INTERSECTION OF CR. 605 (REFINERY ROAD) AND SR. 31 (POTASH MINES ROAD), GO NORTHEAST ON SR. 31 APPROX. 1.1 MILES, TURN LEFT ON PIPELINE ROAD AND GO NORTHWEST 311' THROUGH GATE TO A ROAD SURVEY, FOLLOW ROAD SURVEY NORTH 200' TO THE SOUTHWEST PAD CORNER FOR THIS LOCATION.

**NOVO OIL & GAS NORTHERN DELAWARE, LLC
RANA SALADA FED COM 0504 134H
LOCATED 1243 FT. FROM THE SOUTH LINE
AND 609 FT. FROM THE EAST LINE OF
SECTION 6, TOWNSHIP 23 SOUTH,
RANGE 29 EAST, N.M.P.M.
EDDY COUNTY, STATE OF NEW MEXICO**

JUNE 26, 2018

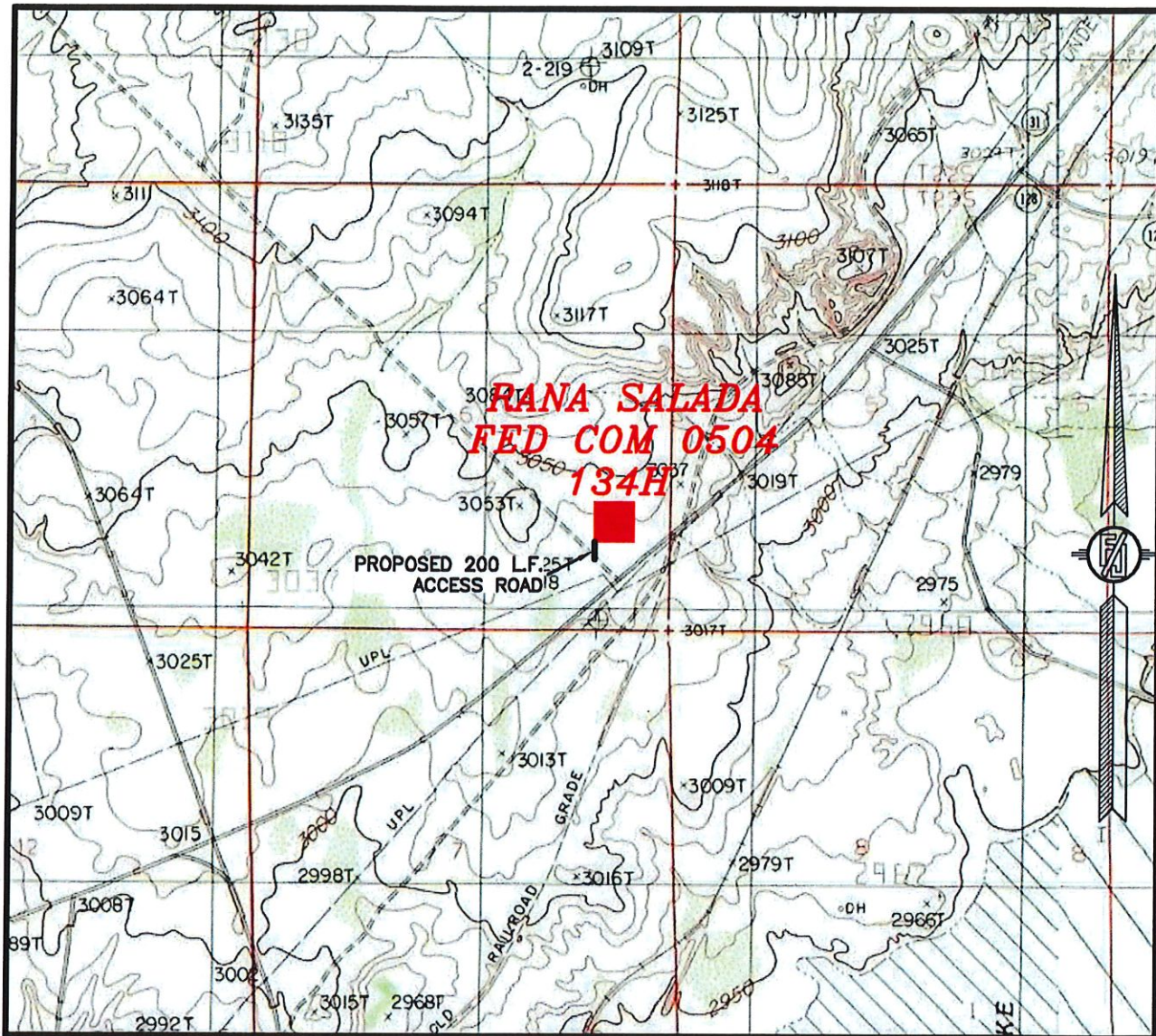
SURVEY NO. 6155A

MADRON SURVEYING, INC.

301 SOUTH CANAL
(575) 234-3341

CARLSBAD, NEW MEXICO

**SECTION 6, TOWNSHIP 23 SOUTH, RANGE 29 EAST, N.M.P.M.
EDDY COUNTY, STATE OF NEW MEXICO
LOCATION VERIFICATION MAP**



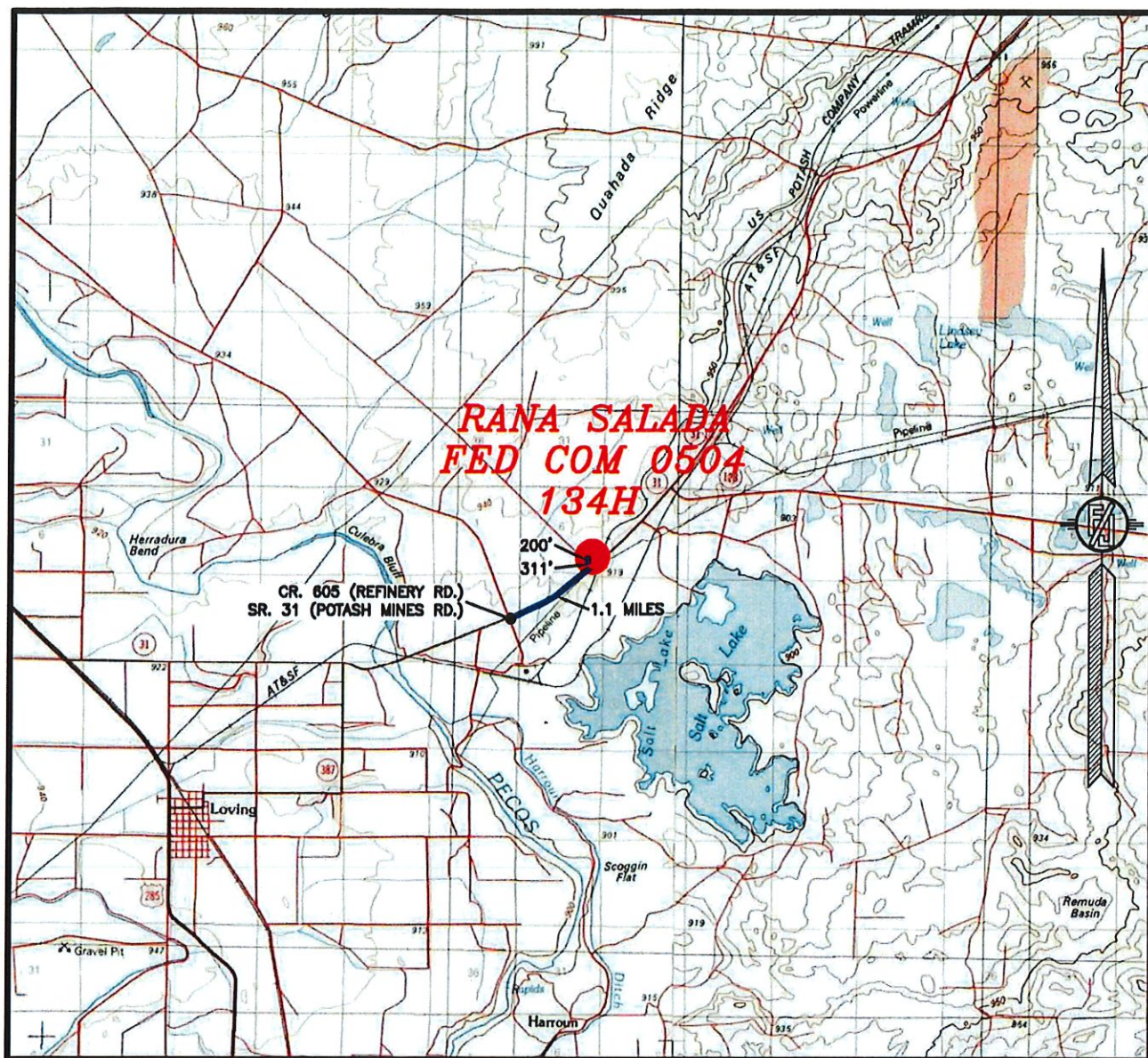
**NOVO OIL & GAS NORTHERN DELAWARE, LLC
RANA SALADA FED COM 0504 134H
LOCATED 1243 FT. FROM THE SOUTH LINE
AND 609 FT. FROM THE EAST LINE OF
SECTION 6, TOWNSHIP 23 SOUTH,
RANGE 29 EAST, N.M.P.M.
EDDY COUNTY, STATE OF NEW MEXICO**

JUNE 26, 2018

MADRON SURVEYING, INC. 301 SOUTH CANAL (575) 234-3341 CARLSBAD, NEW MEXICO

SURVEY NO. 6155A

**SECTION 6, TOWNSHIP 23 SOUTH, RANGE 29 EAST, N.M.P.M.
EDDY COUNTY, STATE OF NEW MEXICO
VICINITY MAP**



DISTANCES IN MILES

NOT TO SCALE

DIRECTIONS TO LOCATION

FROM THE INTERSECTION OF CR. 605 (REFINERY ROAD) AND SR. 31 (POTASH MINES ROAD), GO NORTHEAST ON SR. 31 APPROX. 1.1 MILES, TURN LEFT ON PIPELINE ROAD AND GO NORTHWEST 311' THROUGH GATE TO A ROAD SURVEY, FOLLOW ROAD SURVEY NORTH 200' TO THE SOUTHWEST PAD CORNER FOR THIS LOCATION.

**NOVO OIL & GAS NORTHERN DELAWARE, LLC
RANA SALADA FED COM 0504 134H
LOCATED 1243 FT. FROM THE SOUTH LINE
AND 609 FT. FROM THE EAST LINE OF
SECTION 6, TOWNSHIP 23 SOUTH,
RANGE 29 EAST, N.M.P.M.
EDDY COUNTY, STATE OF NEW MEXICO**

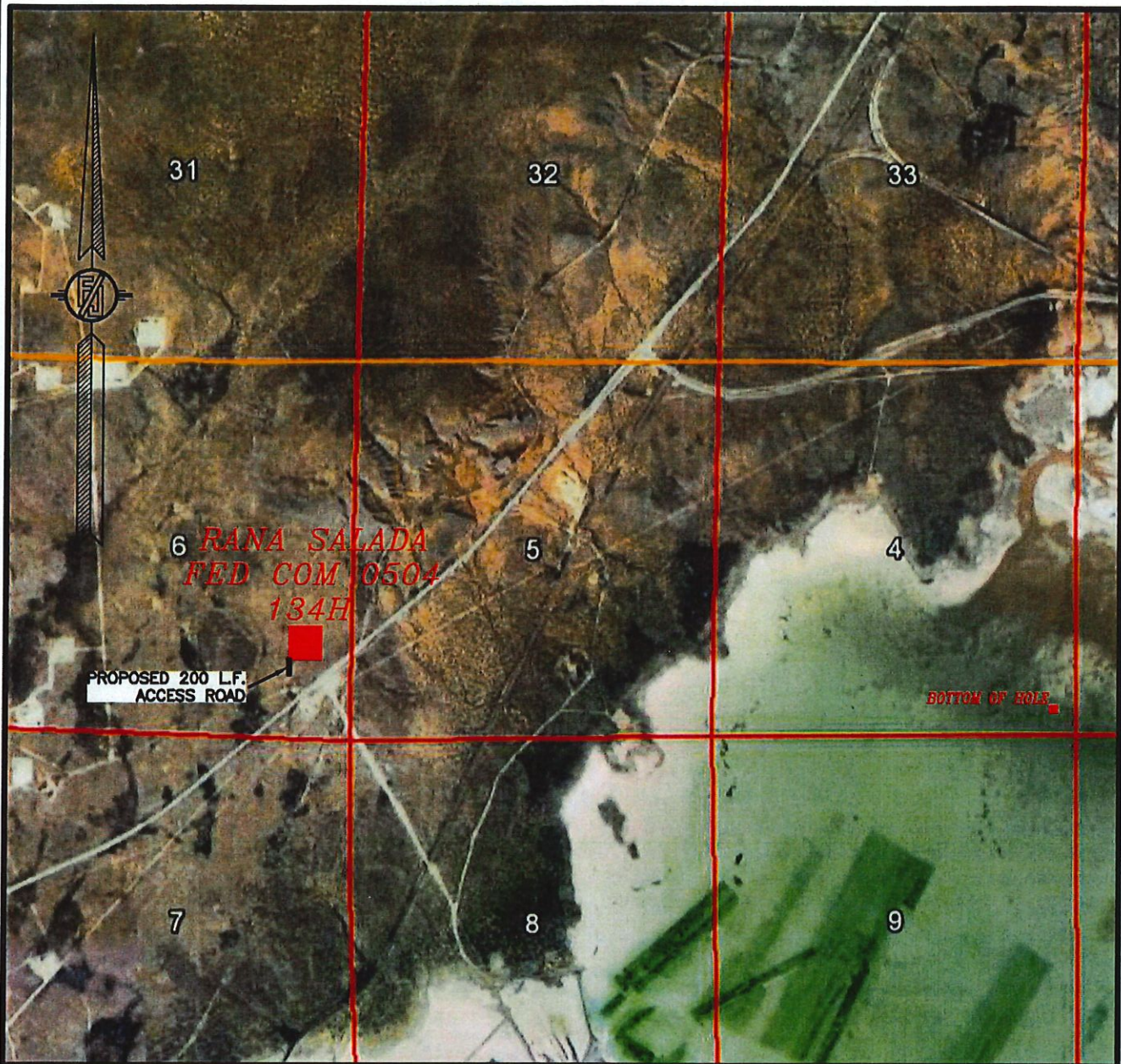
JUNE 26, 2018

SURVEY NO. 6155A

MADRON SURVEYING, INC. 301 SOUTH CANAL (575) 234-3341

CARLSBAD, NEW MEXICO

*SECTION 6, TOWNSHIP 23 SOUTH, RANGE 29 EAST, N.M.P.M.
EDDY COUNTY, STATE OF NEW MEXICO
AERIAL PHOTO*



NOT TO SCALE
AERIAL PHOTO:
GOOGLE EARTH
NOV. 2017

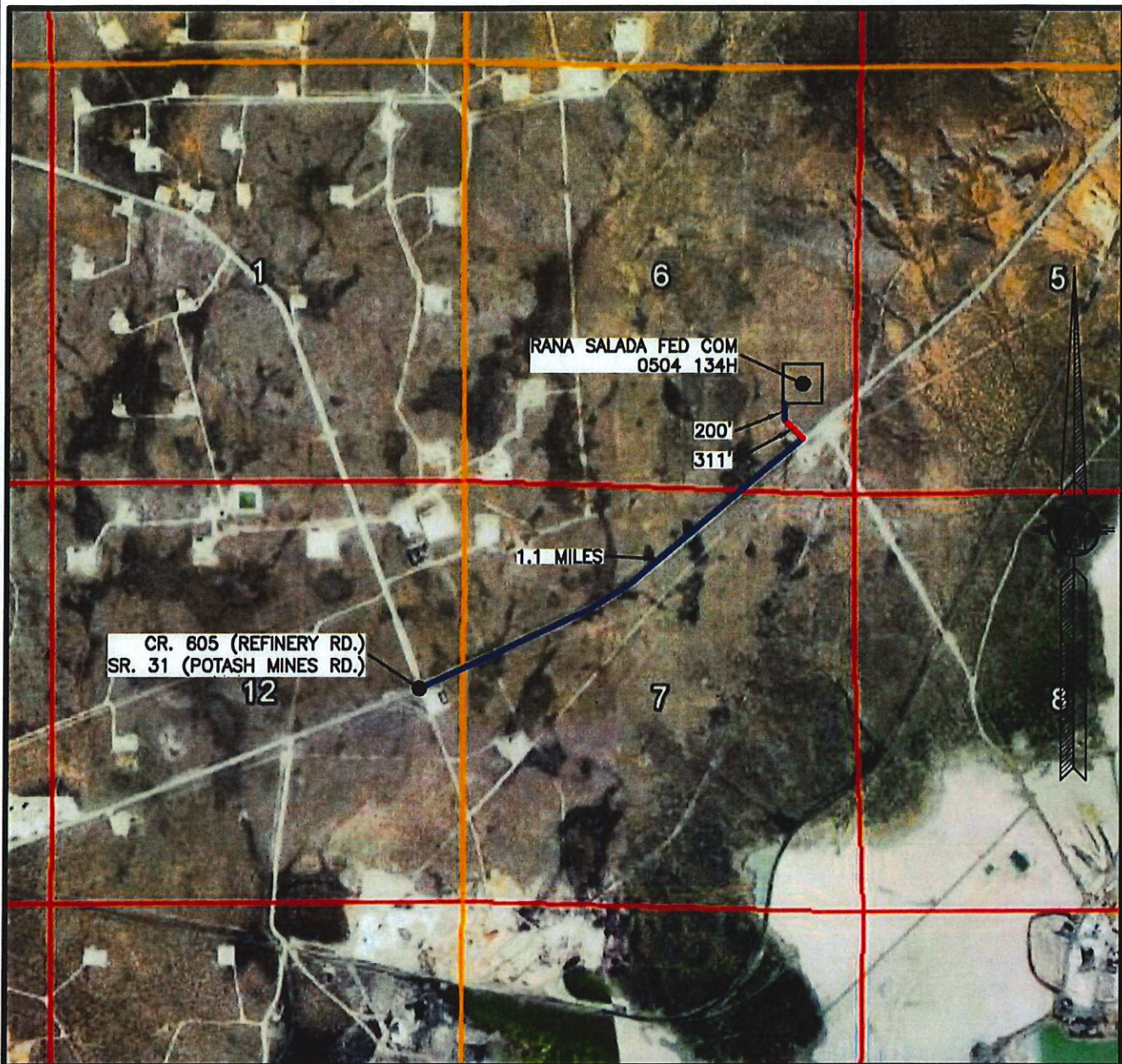
*NOVO OIL & GAS NORTHERN DELAWARE, LLC
RANA SALADA FED COM 0504 134H
LOCATED 1243 FT. FROM THE SOUTH LINE
AND 609 FT. FROM THE EAST LINE OF
SECTION 6, TOWNSHIP 23 SOUTH,
RANGE 29 EAST, N.M.P.M.
EDDY COUNTY, STATE OF NEW MEXICO*

JUNE 26, 2018

SURVEY NO. 6155A

MADRON SURVEYING, INC. 301 SOUTH CANAL (575) 234-3341 CARLSBAD, NEW MEXICO

*SECTION 6, TOWNSHIP 23 SOUTH, RANGE 29 EAST, N.M.P.M.
EDDY COUNTY, STATE OF NEW MEXICO
AERIAL ACCESS ROUTE MAP*



NOT TO SCALE
AERIAL PHOTO:
GOOGLE EARTH
NOV. 2017

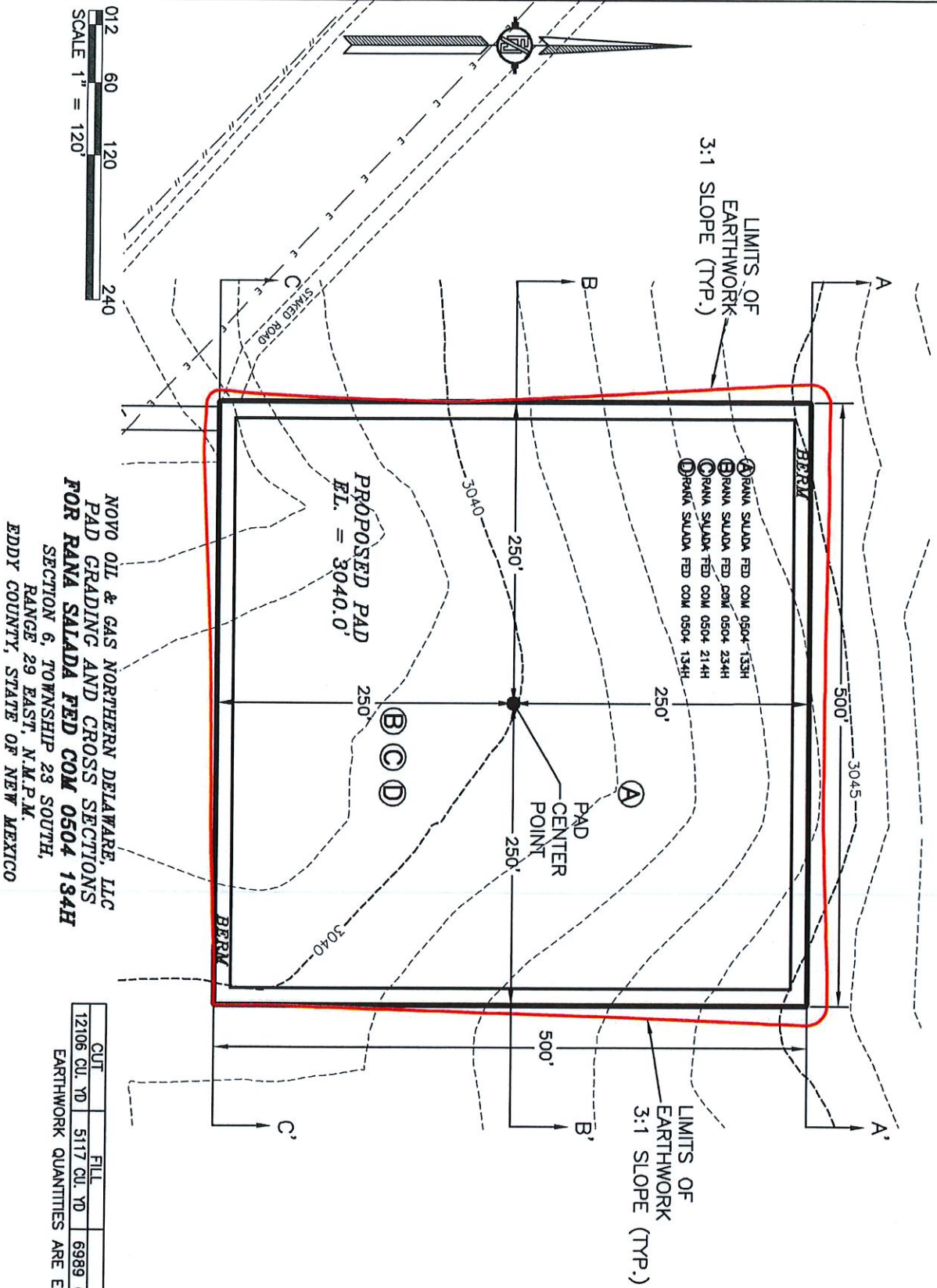
NOVO OIL & GAS NORTHERN DELAWARE, LLC
RANA SALADA FED COM 0504 134H
LOCATED 1243 FT. FROM THE SOUTH LINE
AND 609 FT. FROM THE EAST LINE OF
SECTION 6, TOWNSHIP 23 SOUTH,
RANGE 29 EAST, N.M.P.M.
EDDY COUNTY, STATE OF NEW MEXICO

JUNE 26, 2018

SURVEY NO. 6155A

MADRON SURVEYING, INC. 301 SOUTH CANAL (575) 234-3341 CARLSBAD, NEW MEXICO

PLAN VIEW



CUT	FILL	NET
12106 CU. YD	5117 CU. YD	6989 CU. YD (CUT)

EARTHWORK QUANTITIES ARE ESTIMATED

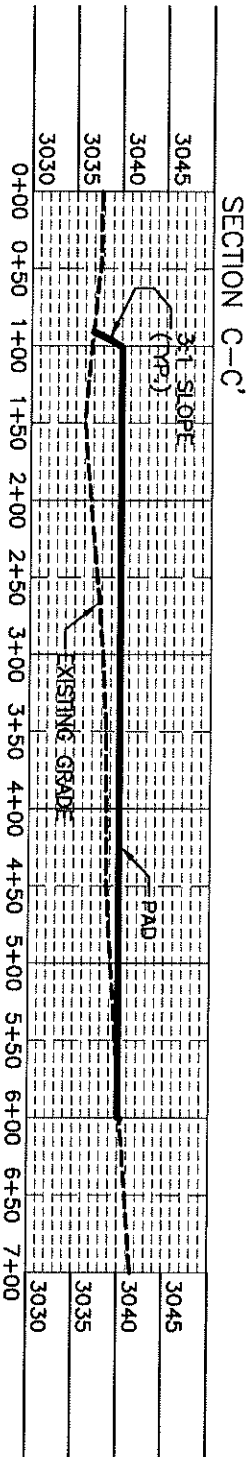
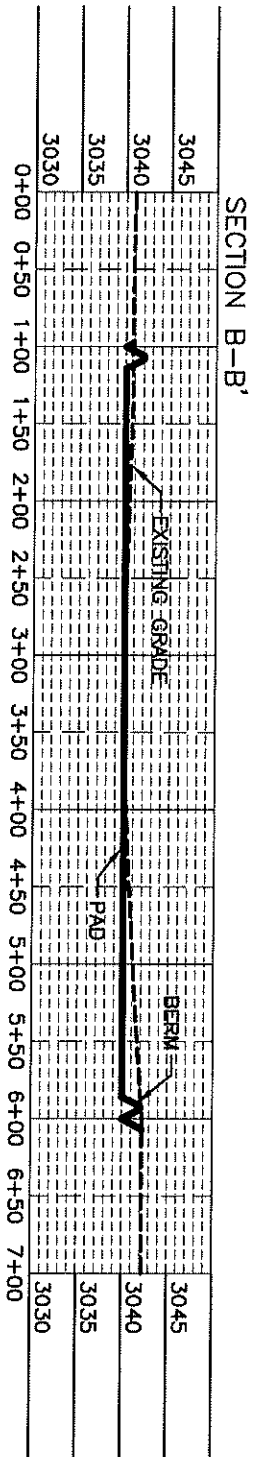
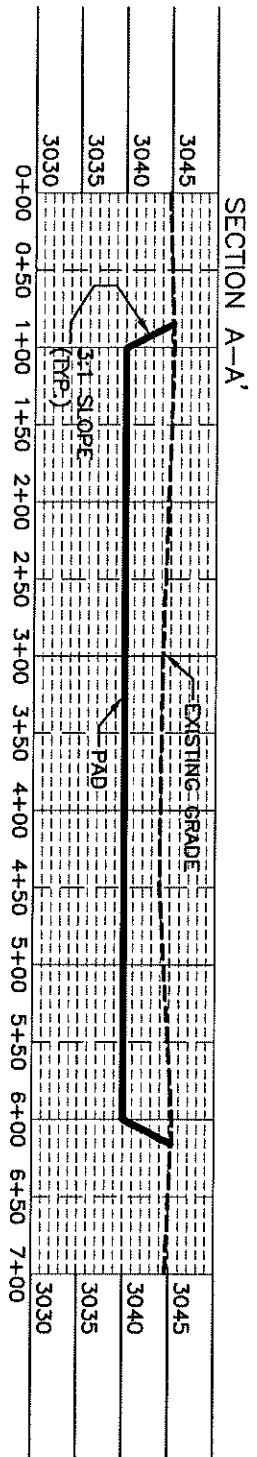
MADRON SURVEYING, INC. 301 SOUTH CANAL (575) 234-3341 CARLSBAD, NEW MEXICO

SHEET 1-2 SURVEY NO. 6155A

NOVO OIL & GAS NORTHERN DELAWARE, LLC
PAD GRADING AND CROSS SECTIONS
FOR RANA SALADA FED COM 0504 134H
SECTION 6, TOWNSHIP 28 SOUTH,
RANGE 29 EAST, N.M.P.M.
EDDY COUNTY, STATE OF NEW MEXICO

JUNE 26, 2018

CROSS-SECTIONS



0+12 60 120 240
SCALE 1" = 120' - 1" = 20' VER

NOVO OIL & GAS NORTHERN DELAWARE, LLC
PAD GRADING AND CROSS SECTIONS
FOR RANA SALADA PED COM 0504 134H
SECTION 6, TOWNSHIP 23 SOUTH,
RANGE 29 EAST, N.M.P.M.
EDDY COUNTY, STATE OF NEW MEXICO

CUT	FILL	NET
12106 CU. YD.	5117 CU. YD.	6989 CU. YD. (CUT)

EARTHWORK QUANTITIES ARE ESTIMATED

MADRON SURVEYING, INC. 301 SOUTH CANAL (575) 234-3341
JUNE 26, 2018
CARLSBAD, NEW MEXICO

SHEET 2-2
SURVEY NO. 6155A