

District I
1625 N. French Dr., Hobbs, NM 88240
Phone: (575) 393-6161 Fax: (575) 393-0720
District II
811 S. First St., Artesia, NM 88210
Phone: (575) 748-1283 Fax: (575) 748-9720
District III
1000 Rio Brazos Road, Aztec, NM 87410
Phone: (505) 334-6178 Fax: (505) 334-6170
District IV
1220 S. St. Francis Dr., Santa Fe, NM 87505
Phone: (505) 476-3460 Fax: (505) 476-3462

State of New Mexico
Energy, Minerals & Natural Resources Department
OIL CONSERVATION DIVISION
1220 South St. Francis Dr.
Santa Fe, NM 87505

Form C-102
Revised August 1, 2011
Submit one copy to appropriate
District Office

☐ AMENDED REPORT

WELL LOCATION AND ACREAGE DEDICATION PLAT

¹ API Number		² Pool Code		³ Pool Name	
⁴ Property Code		⁵ Property Name SAND CHUTE 9/16 B2JO FEDERAL COM			⁶ Well Number 1H
⁷ OGRID NO.		⁸ Operator Name MEWBOURNE OIL COMPANY			⁹ Elevation 3691'

¹⁰ Surface Location

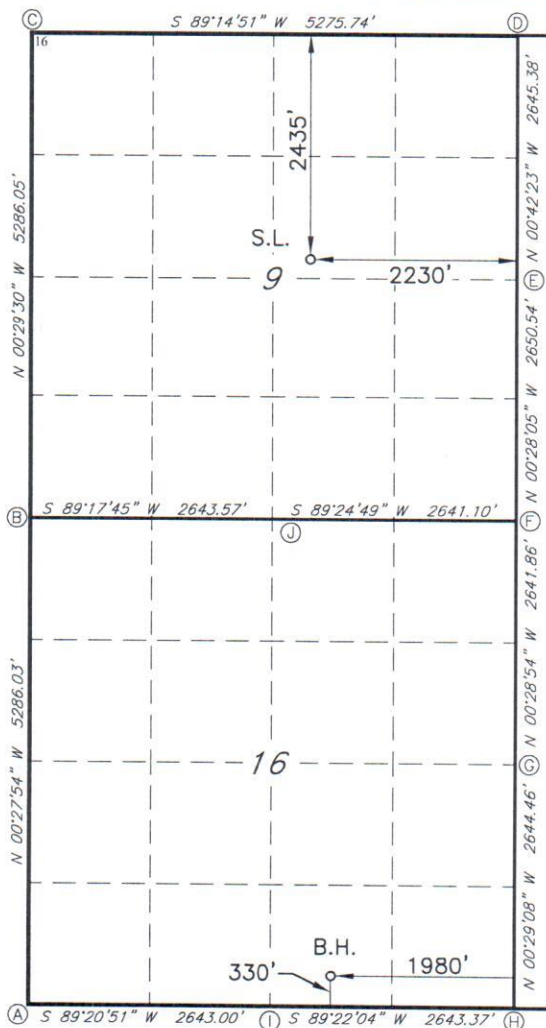
UL or lot no.	Section	Township	Range	Lot Idn	Feet from the	North/South line	Feet From the	East/West line	County
G	9	20S	35E		2435	NORTH	2230	EAST	LEA

¹¹ Bottom Hole Location If Different From Surface

UL or lot no.	Section	Township	Range	Lot Idn	Feet from the	North/South line	Feet from the	East/West line	County
0	16	20S	35E		330	SOUTH	1980	EAST	LEA

¹² Dedicated Acres	¹³ Joint or Infill	¹⁴ Consolidation Code	¹⁵ Order No.

No allowable will be assigned to this completion until all interest have been consolidated or a non-standard unit has been approved by the division.



GEODETIC DATA
NAD 83 GRID - NM EAST
SURFACE LOCATION
N 578857.2 - E 810021.7
LAT: 32.5883034° N
LONG: 103.4609748° W
BOTTOM HOLE
N 571050.0 - E 810338.1
LAT: 32.5668387° N
LONG: 103.4601557° W

CORNER DATA
NAD 83 GRID - NM EAST
A: FOUND 1/2" REBAR
N 570682.7 - E 807035.6
B: CALCULATED CORNER
N 575967.3 - E 806992.7
C: FOUND BRASS CAP "1912"
N 581252.0 - E 806947.3
D: FOUND BRASS CAP "1912"
N 581321.3 - E 812221.6
E: FOUND BRASS CAP "1912"
N 578676.7 - E 812254.2
F: FOUND 3" PIPE
N 576026.8 - E 812275.8
G: FOUND BRASS CAP "1912"
N 573385.7 - E 812298.0
H: FOUND BRASS CAP "1912"
N 570741.9 - E 812320.4
I: FOUND BRASS CAP "1912"
N 570712.8 - E 809677.8
J: FOUND BRASS CAP "1912"
N 575999.8 - E 809635.5

¹⁷ OPERATOR CERTIFICATION

I hereby certify that the information contained herein is true and complete to the best of my knowledge and belief, and that this organization either owns a working interest or unleased mineral interest in the land including the proposed bottom hole location or has a right to drill this well at this location pursuant to a contract with an owner of such a mineral or working interest, or to a voluntary pooling agreement or a compulsory pooling order heretofore entered by the division.

Signature _____ Date _____
Printed Name _____
E-mail Address _____

¹⁸ SURVEYOR CERTIFICATION

I hereby certify that the well location shown on this plat was plotted from field notes of actual surveys made by me or under my supervision, and that the same is true and correct to the best of my belief.

5-7-18

Date of Survey

Signature and Seal of Professional Surveyor

19680

Certificate Number

REV: 5/10/18-SL LOC. MOVE

RRC - Job No.: **LS1804511R**

District I
1625 N. French Dr., Hobbs, NM 88240
Phone: (575) 393-6161 Fax: (575) 393-0720
District II
811 S. First St., Artesia, NM 88210
Phone: (575) 748-1283 Fax: (575) 748-9720
District III
1000 Rio Brazos Road, Aztec, NM 87410
Phone: (505) 334-6178 Fax: (505) 334-6170
District IV
1220 S. St. Francis Dr., Santa Fe, NM 87505
Phone: (505) 476-3460 Fax: (505) 476-3462

State of New Mexico
Energy, Minerals & Natural Resources Department
OIL CONSERVATION DIVISION
1220 South St. Francis Dr.
Santa Fe, NM 87505

Form C-102
Revised August 1, 2011
Submit one copy to appropriate
District Office

☐ AMENDED REPORT

WELL LOCATION AND ACREAGE DEDICATION PLAT

¹ API Number		² Pool Code		³ Pool Name	
⁴ Property Code		⁵ Property Name SAND CHUTE 9/4 B2GB FEDERAL COM			⁶ Well Number 1H
⁷ GRID NO.		⁸ Operator Name MEWBOURNE OIL COMPANY			⁹ Elevation 3692'

¹⁰ Surface Location

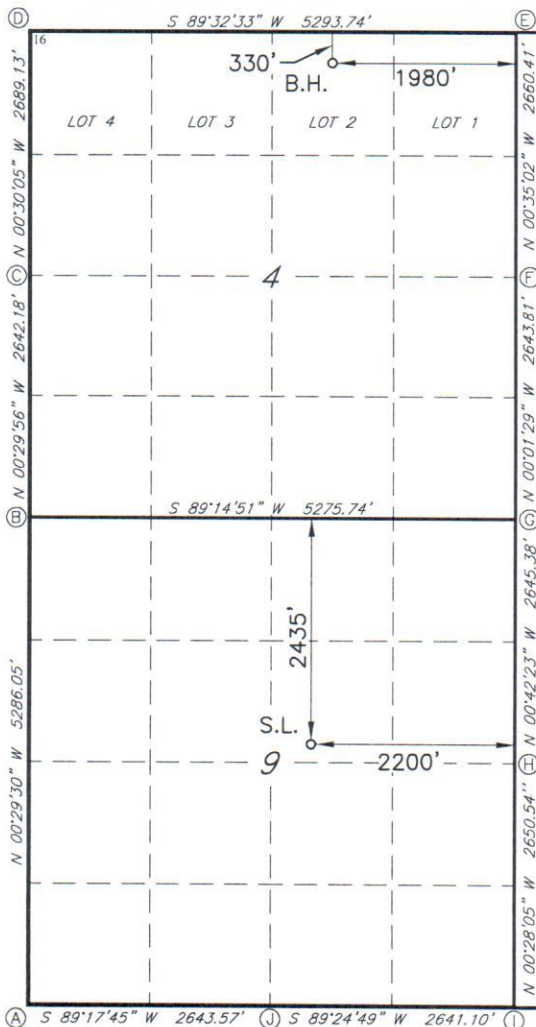
UL or lot no. G	Section 9	Township 20S	Range 35E	Lot Idn	Feet from the 2435	North/South line NORTH	Feet From the 2200	East/West line EAST	County LEA
---------------------------	---------------------	------------------------	---------------------	---------	------------------------------	----------------------------------	------------------------------	-------------------------------	----------------------

¹¹ Bottom Hole Location If Different From Surface

UL or lot no. 2	Section 4	Township 20S	Range 35E	Lot Idn	Feet from the 330	North/South line NORTH	Feet from the 1980	East/West line EAST	County LEA
---------------------------	---------------------	------------------------	---------------------	---------	-----------------------------	----------------------------------	------------------------------	-------------------------------	----------------------

¹² Dedicated Acres	¹³ Joint or Infill	¹⁴ Consolidation Code	¹⁵ Order No.
-------------------------------	-------------------------------	----------------------------------	-------------------------

No allowable will be assigned to this completion until all interest have been consolidated or a non-standard unit has been approved by the division.



GEODETTIC DATA
NAD 83 GRID - NM EAST
SURFACE LOCATION
N 578857.6 - E 810051.8
LAT: 32.5883038° N
LONG: 103.4608771° W
BOTTOM HOLE
N 586278.6 - E 810217.1
LAT: 32.6086962° N
LONG: 103.4601427° W

CORNER DATA
NAD 83 GRID - NM EAST
A: CALCULATED CORNER
N 575967.3 - E 806992.7
B: FOUND BRASS CAP "1912"
N 581252.0 - E 806947.3
C: FOUND BRASS CAP "1912"
N 583893.6 - E 806924.3
D: FOUND BRASS CAP "1912"
N 586582.1 - E 806900.8
E: CALCULATED CORNER
N 586624.3 - E 812193.3
F: FOUND BRASS CAP "1912"
N 583964.6 - E 812220.4
G: FOUND BRASS CAP "1912"
N 581321.3 - E 812221.6
H: FOUND BRASS CAP "1912"
N 578676.7 - E 812254.2
I: FOUND 3" PIPE
N 576026.8 - E 812275.8
J: FOUND BRASS CAP "1912"
N 575999.8 - E 809635.5

¹⁷ OPERATOR CERTIFICATION

I hereby certify that the information contained herein is true and complete to the best of my knowledge and belief, and that this organization either owns a working interest or unleased mineral interest in the land including the proposed bottom hole location or has a right to drill this well at this location pursuant to a contract with an owner of such a mineral or working interest, or to a voluntary pooling agreement or a compulsory pooling order heretofore entered by the division.

Signature _____ Date _____
Printed Name _____
E-mail Address _____

¹⁸ SURVEYOR CERTIFICATION

I hereby certify that the well location shown on this plat was plotted from field notes of actual surveys made by me or under my supervision, and that the same is true and correct to the best of my belief.

5-7-18

Date of Survey

Signature and Seal of Professional Surveyor

19680

Certificate Number

REV: 5/10/18-SL LOC. MOVE

RRC - Job No.:

LS1804512R