



XTO Energy Inc.  
EMHC.W4.4A.375  
22777 Springwoods Village Pkwy  
Spring TX 77389-1425  
832-625-3994 - Direct Phone  
Blake\_Hueske@xtoenergy.com

February 21, 2018

**FEDERAL EXPRESS**

Bureau of Land Management  
Carlsbad District Office  
620 E. Green Street  
Carlsbad, NM 88220  
Attn: Mr. Chris Walls

New Mexico State Land Office  
Commissioner of Public Lands  
310 Old Santa Fe Trail  
Santa Fe, NM 87501  
Attn: Mr. Randy Bayliss

New Mexico Oil Conservation Division  
1220 St. Francis  
Santa Fe, NM 87505  
Attn: Mr. David Brooks

Re: 2018 Review of Operations  
2019 Plan of Development  
Poker Lake Unit (NM 071016X)  
Eddy County, New Mexico

Ladies and Gentlemen:

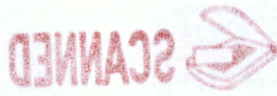
As operator of the Poker Lake Unit, and pursuant to Article 10 of the Poker Lake Unit Agreement, XTO Permian Operating LLC (XTO) hereby submits for your information a 2018 Review of Operations, and 2019 Plan of Development.

As a prudent operator, XTO will pursue unit operations that utilize best practices for the efficient development and conservation of the natural resources to achieve the highest level of economic recovery, while focusing on the protection of correlative rights and the prevention of waste.

Below is a listing of information discussed herein, or contained to this letter s attachments:

- 2018 Review of Operations
- 2019 Plan of Development
- Listing and Status of Existing Wells (attachment)
- Facilities Infrastructure (attachment)
- Reservoir Production plot (attachment)

Recd. 2-28-19 SD



It is understood that approval of the 2019 Plan of Development (POD) is not an authorization of operations requiring specific permitting, referencing by way of example and not an all-inclusive list, drill well APD's or pipeline Rights-of-Way. Any adjustments that increase the work plan of this POD will be requested by operator filing of a Supplemental POD.

If this POD meets with your approval, please advise the undersigned in writing at your earliest opportunity.

If during your review of this information you should have reservoir questions please direct same to Nathan Franka at 832-625-2891. All other inquiries may be directed to the undersigned at 832-625-3994, or alternatively at [blake\\_hueske@xtoenergy.com](mailto:blake_hueske@xtoenergy.com).

---

### **2018 Review of Operations**

---

- **Drilled**

- PLU PIERCE CANYON 17 SWD 001
- POKER LAKE UNIT 18 BD 103H
- POKER LAKE UNIT 18 BD 104H
- POKER LAKE UNIT 18 BD 121H
- POKER LAKE UNIT 18 BD 122H
- POKER LAKE UNIT 18 BD 124H
- POKER LAKE UNIT 18 BD 161H
- POKER LAKE UNIT 23 DTD 108H
- POKER LAKE UNIT 23 DTD 907H
- POKER LAKE UNIT 359H
- POKER LAKE UNIT 36 DTD STATE SWD 1
- POKER LAKE UNIT 464H
- POKER LAKE UNIT 474H
- POKER LAKE UNIT 474Y
- POKER LAKE UNIT 486H
- POKER LAKE UNIT 486Y

- **Plugged and Abandoned**

- PLU 188Y
- PLU 170
- PLU 137
- PLU 162
- PLU 151
- PLU 71
- PLU 98
- PLU 251
- PLU 43
- PLU 227
- PLU 348H
- PLU 166
- PLU 181
- PLU 191
- PLU 49
- PLU 260
- PLU 221

- PLU 85
- PLU 93
- PLU 78
- PLU 145
- PLU 186
- PLU 114
- PLU 057
- PLU 176

• **Participating Areas Established or Modified**

- PLU Bone Spring PA "G" -- NM71016O
- PLU Bone Spring PA "G" 1st Revision -- NM71016O
- PLU Bone Spring PA "D" 1st Revision -- NM71016L
- PLU Bone Spring PA "D" 1st Revision -- NM71016L
- PLU Bone Spring PA "H" -- NM71016P
- PLU Bone Spring PA "I" -- NM71016Q
- PLU Bone Spring PA "H" 1st Revision -- NM71016P
- PLU Bone Spring PA "J" -- NM71016R
- PLU Bone Spring PA "K" -- NM71016S
- PLU Bone Spring PA "K" 1st Revision -- NM71016S
- PLU Bone Spring PA "L" -- NM71016T
- PLU Bone Spring PA "M" -- NM71016U
- PLU Bone Spring PA "N" -- NM71016V
- PLU Bone Spring PA "AM" Consolidated -- NM71016W
- PLU Bone Spring PA "D" 2nd Revision -- NM71016L
- PLU Bone Spring PA "O" -- NM71016Y
- PLU Bone Spring PA "P" -- NM71016Z

• **Unit Expansion**

- None

---

**2019 Plan of Development**

---

• **Drilling**

- Submit Applications for Permits to Drill the wells listed on the attached list

• **Plugged and Abandoned**

- PLU 079
- PLU 165
- PLU 144
- PLU 141
- PLU 140
- PLU 115
- PLU 235
- PLU 208
- PLU 216
- PLU 218

- PLU 264
- PLU CVX JV PB 002H
- PLU 108
- PLU 100
- PLU 42 TBD

- **Participating Areas**

- Submit additional Commercial Determinations for Delaware, Bone Spring and Wolfcamp wells and facilitate the creation of new Participating Areas or modifications of existing Participating Areas as appropriate.

- **Infrastructure**

- Progress facilities to handle additional volumes from drilling operations. Impacted surface areas include both BLM and State leases. State lease are shown in blue on the attached plat.

**OFFSET OBLIGATIONS**

- Appropriate and adequate measures will be taken within Poker Lake Unit to prevent offset drainage of from adjacent operations pursuant to applicable regulations.

**PLAN SUPPLEMENTS**

- In accordance with the terms and provisions of the Poker Lake Unit Agreement, this Plan of Development may be supplemented if necessary to address a change in plans.

**EFFECTIVE DATE**

- This Plan of Development shall be considered effective as of January 1, 2019.

Sincerely,

Blake Hueske, CPL  
Senior Staff Landman

## POKER LAKE UNIT WELL STATUS LIST 2018

API	WELL NAME	STATUS
30-015-20933	POKER LAKE UNIT 041	ACT
30-015-21095	POKER LAKE UNIT 042	ACT
30-015-21700	POKER LAKE UNIT 043W	SI
30-015-23283	POKER LAKE UNIT 050	ACT
30-015-23430	POKER LAKE UNIT 049	ACT
30-015-23783	POKER LAKE 053	ACT
30-015-24147	POKER LAKE UNIT 052	ACT
30-015-24190	POKER LAKE UNIT 058	SI
30-015-24196	POKER LAKE UNIT 059	ACT
30-015-24269	POKER LAKE UNIT 057	SI
30-015-25263	POKER LAKE UNIT 067	ACT
30-015-25781	POKER LAKE UNIT 068	ACT
30-015-26084	POKER LAKE UNIT 071A	SI
30-015-27438	POKER LAKE UNIT 079	SI
30-015-27536	POKER LAKE UNIT 078	SI
30-015-27537	POKER LAKE UNIT 080	SI
30-015-27752	POKER LAKE UNIT 082	SI
30-015-27753	POKER LAKE UNIT 083	ACT
30-015-27787	POKER LAKE UNIT 089	ACT
30-015-27797	POKER LAKE UNIT 092	SI
30-015-27798	POKER LAKE UNIT 093	SI
30-015-27895	POKER LAKE UNIT 105	ACT
30-015-27911	POKER LAKE UNIT 085	SI
30-015-27912	POKER LAKE UNIT 086	SI
30-015-27919	POKER LAKE UNIT 103	SI
30-015-27920	POKER LAKE UNIT 106	ACT
30-015-27961	POKER LAKE UNIT 100	SI
30-015-27962	POKER LAKE 098W	SI
30-015-27986	POKER LAKE UNIT 087	ACT
30-015-28086	POKER LAKE UNIT 108	SI
30-015-28087	POKER LAKE UNIT 111	SI
30-015-28102	POKER LAKE UNIT 114	SI
30-015-28180	POKER LAKE UNIT 115	SI
30-015-28526	POKER LAKE 123	SI
30-015-29103	POKER LAKE UNIT 084	SI
30-015-29213	POKER LAKE UNIT 118	P&A
30-015-29552	POKER LAKE 129	ACT
30-015-29695	POKER LAKE 128	ACT
30-015-29715	POKER LAKE UNIT 137	ACT
30-015-29847	POKER LAKE 139	SI
30-015-29876	POKER LAKE UNIT 140	ACT
30-015-30039	POKER LAKE UNIT 141	ACT
30-015-30541	POKER LAKE UNIT 144	ACT
30-015-31006	POKER LAKE UNIT 145	ACT
30-015-31007	POKER LAKE UNIT 146	P&A
30-015-31085	POKER LAKE UNIT 148	ACT



**POKER LAKE UNIT WELL STATUS LIST 2018**

30-015-31177	POKER LAKE UNIT 147	ACT
30-015-31318	POKER LAKE UNIT 161	ACT
30-015-31334	POKER LAKE UNIT 165	SI
30-015-31412	POKER LAKE UNIT 153	ACT
30-015-31415	POKER LAKE UNIT 152	ACT
30-015-31416	POKER LAKE UNIT 149	P&A
30-015-31538	POKER LAKE UNIT 150W	P&A
30-015-31595	POKER LAKE UNIT 151W	SI
30-015-31686	POKER LAKE UNIT 154	ACT
30-015-31687	POKER LAKE UNIT 155	SI
30-015-31688	POKER LAKE UNIT 156	ACT
30-015-31689	POKER LAKE UNIT 157	ACT
30-015-31690	POKER LAKE UNIT 158	SI
30-015-31691	POKER LAKE UNIT 159	ACT
30-015-31695	POKER LAKE UNIT 166W	SI
30-015-31696	POKER LAKE UNIT 167	ACT
30-015-31744	POKER LAKE UNIT 170W	SI
30-015-31973	POKER LAKE UNIT 186	ACT
30-015-31990	POKER LAKE UNIT 184	ACT
30-015-32043	POKER LAKE UNIT 176	ACT
30-015-32052	POKER LAKE UNIT 178	ACT
30-015-32126	POKER LAKE UNIT 180	ACT
30-015-32127	POKER LAKE UNIT 181	SI
30-015-32128	POKER LAKE UNIT 182	ACT
30-015-32142	POKER LAKE UNIT 190	ACT
30-015-32823	POKER LAKE UNIT 099	ACT
30-015-32882	POKER LAKE UNIT 200	ACT
30-015-32883	POKER LAKE UNIT 203	P&A
30-015-32928	POKER LAKE UNIT 204	ACT
30-015-32929	POKER LAKE UNIT 201	ACT
30-015-32934	POKER LAKE UNIT 202	ACT
30-015-32961	POKER LAKE UNIT 208	ACT
30-015-33137	POKER LAKE UNIT 164	SI
30-015-33161	POKER LAKE UNIT 177	ACT
30-015-33164	POKER LAKE UNIT 196	ACT
30-015-33224	POKER LAKE UNIT 183Q	ACT
30-015-33362	POKER LAKE UNIT 192	SI
30-015-33423	POKER LAKE UNIT 205	ACT
30-015-33593	POKER LAKE UNIT 210	ACT
30-015-33642	POKER LAKE UNIT 223	ACT
30-015-33776	POKER LAKE UNIT 188Y	SI
30-015-33858	POKER LAKE UNIT 211	ACT
30-015-33860	POKER LAKE UNIT 214	ACT
30-015-33861	POKER LAKE UNIT 216	ACT
30-015-33863	POKER LAKE UNIT 217	ACT
30-015-33864	POKER LAKE UNIT 221	SI
30-015-33901	POKER LAKE UNIT 215	P&A



## POKER LAKE UNIT WELL STATUS LIST 2018

30-015-33915	POKER LAKE UNIT 212	ACT
30-015-33929	POKER LAKE UNIT 227W	SI
30-015-33989	POKER LAKE UNIT 218	ACT
30-015-34009	POKER LAKE UNIT 232	ACT
30-015-34072	POKER LAKE UNIT 231	ACT
30-015-34078	POKER LAKE UNIT 207	SI
30-015-34105	POKER LAKE UNIT 226	SI
30-015-34108	POKER LAKE UNIT 224	ACT
30-015-34123	POKER LAKE UNIT 222	SI
30-015-34183	POKER LAKE UNIT 163	P&A
30-015-34308	POKER LAKE UNIT 241	SI
30-015-34309	POKER LAKE UNIT 235	ACT
30-015-34341	POKER LAKE UNIT 168	ACT
30-015-34364	POKER LAKE UNIT 237	ACT
30-015-34404	POKER LAKE UNIT 251H	ACT
30-015-34419	POKER LAKE UNIT 236	ACT
30-015-34463	POKER LAKE UNIT 260	SI
30-015-34467	POKER LAKE UNIT 247	ACT
30-015-34636	POKER LAKE UNIT 219	ACT
30-015-34781	POKER LAKE UNIT 191A	ACT
30-015-34783	POKER LAKE UNIT 197	ACT
30-015-34877	POKER LAKE UNIT 261	ACT
30-015-34946	POKER LAKE UNIT 264	ACT
30-015-35083	POKER LAKE UNIT 281	ACT
30-015-35115	POKER LAKE UNIT 263H	ACT
30-015-35137	POKER LAKE UNIT 276	ACT
30-015-35138	POKER LAKE UNIT 274	ACT
30-015-35162	POKER LAKE UNIT 102	SI
30-015-35477	POKER LAKE UNIT 279	ACT
30-015-35522	POKER LAKE UNIT 162W	SI
30-015-35546	POKER LAKE UNIT 291	ACT
30-015-35549	POKER LAKE UNIT 295	ACT
30-015-35590	POKER LAKE UNIT 289	ACT
30-015-35614	POKER LAKE UNIT 265H	ACT
30-015-35628	POKER LAKE UNIT 220	ACT
30-015-35842	POKER LAKE UNIT 239H	ACT
30-015-35843	POKER LAKE UNIT 240	ACT
30-015-36024	POKER LAKE UNIT 290	ACT
30-015-36506	POKER LAKE UNIT 199	ACT
30-015-36635	PLU CVX JV PC 001H (17-25-30)	ACT
30-015-36636	PLU CVX JV PC 006H (33-24-30)	ACT
30-015-36657	PLU CVX JV PC 002H (32-24-30)	ACT
30-015-36830	PLU CVX JV PC 003H (28-24-30)	ACT
30-015-36924	POKER LAKE UNIT 301H	ACT
30-015-36950	POKER LAKE UNIT 300H	ACT
30-015-36998	PLU CVX JV PC 004H (05-25-30)	ACT
30-015-37029	PL CVX JV PC 008H (07-24-30)	ACT



## POKER LAKE UNIT WELL STATUS LIST 2018

30-015-37030	PLU CVX JV PB 001H (01-26-30)	ACT
30-015-37031	PLU CVX JV BS 001H (26-24-30)	ACT
30-015-37147	PLU CVX JV BS 002H (11-24-30)	ACT
30-015-37375	PL CVX JV PC 009H (16-25-30)	ACT
30-015-37518	PL CVX JV PC 005H (12-24-29)	ACT
30-015-37646	POKER LAKE UNIT 303H	ACT
30-015-37647	POKER LAKE UNIT 302H	ACT
30-015-37728	POKER LAKE UNIT 308H	ACT
30-015-37800	PLU CVX JV RR 003H (19-25-30)	SI
30-015-37838	PLU CVX JV BS 003H (22-24-30)	ACT
30-015-37937	PLU CVX JV PC 007H (08-25-30)	ACT
30-015-37938	PL CVX JV RR 005H (32-25-30)	ACT
30-015-38112	POKER LAKE UNIT 293H	ACT
30-015-38319	PLU CVX JV BS 004H (27-24-30)	ACT
30-015-38357	PLU CVX JV RR 004H (20-25-30)	ACT
30-015-38666	POKER LAKE UNIT 342H	ACT
30-015-38667	POKER LAKE UNIT 343H	ACT
30-015-38668	POKER LAKE UNIT 347H	ACT
30-015-38669	POKER LAKE UNIT 348H	ACT
30-015-38904	POKER LAKE UNIT 355H	ACT
30-015-39018	PLU CVX JV BS 005H (25-24-30)	ACT
30-015-39143	POKER LAKE UNIT 357H	ACT
30-015-39166	POKER LAKE UNIT 315H	ACT
30-015-39251	POKER LAKE UNIT 327H	ACT
30-015-39252	POKER LAKE UNIT 335H	ACT
30-015-39253	POKER LAKE UNIT 330H	ACT
30-015-39293	POKER LAKE UNIT 328H	ACT
30-015-39294	POKER LAKE UNIT 333H	ACT
30-015-39344	PLU CVX JV BS 007H (02-25-30)	ACT
30-015-39392	POKER LAKE UNIT 325H	ACT
30-015-39469	POKER LAKE UNIT 312H	ACT
30-015-39479	POKER LAKE UNIT 326H	ACT
30-015-39480	POKER LAKE UNIT 346H	ACT
30-015-39486	POKER LAKE UNIT 341H	ACT
30-015-39487	POKER LAKE UNIT 344H	ACT
30-015-39488	POKER LAKE UNIT 345H	ACT
30-015-39508	PLU CVX JV BS 008H (14-25-30)	ACT
30-015-39633	PL CVX JV BS 009H (23-24-30)	ACT
30-015-39675	POKER LAKE UNIT 356H	ACT
30-015-39691	POKER LAKE UNIT 337H	ACT
30-015-39692	PL CVX JV PC 010H (20-24-30)	ACT
30-015-39693	PLU CVX JV BS 011H (15-25-30)	ACT
30-015-39731	POKER LAKE UNIT 318H	ACT
30-015-39732	POKER LAKE UNIT 340H	ACT
30-015-39768	PL CVX JV PC 011H (21-24-30)	ACT
30-015-39794	POKER LAKE UNIT 413H	ACT
30-015-39795	POKER LAKE UNIT 420H	SI



## POKER LAKE UNIT WELL STATUS LIST 2018

30-015-39810	POKER LAKE UNIT 320H	ACT
30-015-39834	POKER LAKE UNIT 319H	ACT
30-015-39835	POKER LAKE UNIT 332H	ACT
30-015-39846	PLU CVX JV BS 010H (24-24-30)	ACT
30-015-39847	PL CVX JV PB 003H (04-26-31)	SI
30-015-39918	POKER LAKE UNIT 401H	ACT
30-015-39919	POKER LAKE UNIT 412H	ACT
30-015-39930	POKER LAKE UNIT 411H	ACT
30-015-39932	PL CVX JV PB 002H (03-26-30)	ACT
30-015-40126	PL CVX JV PC 012H (16-24-30)	ACT
30-015-40155	PLU CVX JV BS 013H (35-24-30)	ACT
30-015-40156	PL CVX JV BS 012H (34-24-30)	ACT
30-015-40261	PLU CVX JV BS 014H (19-24-31)	ACT
30-015-40296	POKER LAKE UNIT 392H	ACT
30-015-40341	PL CVX JV RB 002H (32-23-30)	ACT
30-015-40395	PL CVX JV BS 015H (14-24-30)	ACT
30-015-40435	PLU PIERCE CANYON 03 FEDERAL 1 SWD	ACT
30-015-40436	POKER LAKE UNIT 368H	ACT
30-015-40447	PL CVX JV BS 017H (07-25-31)	ACT
30-015-40520	PLU CVX JV PC 013H (17-24-30)	ACT
30-015-40580	PL CVX JV RR 006H (21-25-30)	SI
30-015-40581	PL CVX JV BS 016H (03-25-30)	ACT
30-015-40659	POKER LAKE UNIT 339H	ACT
30-015-40660	PL CVX JV RB 001H (04-24-30)	ACT
30-015-40661	PLU CVX JV BS 020H (02-25-30)	ACT
30-015-40684	POKER LAKE UNIT 363H	ACT
30-015-40685	POKER LAKE UNIT 324H	ACT
30-015-40710	POKER LAKE UNIT 423H	ACT
30-015-40756	PL CVX JV PB 004H (25-25-30)	ACT
30-015-40762	PL CVX JV RR 007H (33-25-30)	ACT
30-015-40763	PLU CVX JV PB 005H (22-25-30)	ACT
30-015-40764	PLU CVX JV PB 006H (20-25-31)	ACT
30-015-40765	PL CVX JV RR 008H (28-25-30)	ACT
30-015-40766	PL CVX JV BS 019H (01-25-30)	ACT
30-015-40771	POKER LAKE UNIT 321H	ACT
30-015-40791	POKER LAKE UNIT 322H	ACT
30-015-40799	POKER LAKE UNIT 362H	ACT
30-015-40800	POKER LAKE UNIT 364H	ACT
30-015-40802	POKER LAKE UNIT 400H	ACT
30-015-40935	PLU DELAWARE B 23 FEDERAL 1 SWD	ACT
30-015-40936	PL CVX JV BS 018H (15-24-30)	ACT
30-015-40951	POKER LAKE UNIT 393H	ACT
30-015-40964	POKER LAKE UNIT 410H	ACT
30-015-41033	POKER LAKE UNIT 421H	ACT
30-015-41039	POKER LAKE UNIT 331H	ACT
30-015-41056	POKER LAKE UNIT 422H	ACT
30-015-41075	POKER LAKE UNIT 395H	ACT



## POKER LAKE UNIT WELL STATUS LIST 2018

30-015-41083	POKER LAKE UNIT 394H	ACT
30-015-41136	POKER LAKE UNIT 409H	ACT
30-015-41137	PLU CVX JV PC 014H (04-25-30)	ACT
30-015-41185	POKER LAKE UNIT 387H	ACT
30-015-41195	PLU CVX JV PC 015H (19-24-30)	ACT
30-015-41198	PLU CVX JV PC 016H (19-24-30)	ACT
30-015-41229	POKER LAKE UNIT 402H	ACT
30-015-41246	POKER LAKE UNIT 428H	ACT
30-015-41281	PL CVX JV PC 018H (18-24-30)	ACT
30-015-41299	PL CVX JV PC 017H (18-24-30)	ACT
30-015-41392	PL CVX JV BS 023H (02-25-30)	ACT
30-015-41554	PL CVX JV BS 021H (13-25-30)	ACT
30-015-41598	PLU CVX JV BS 024H (12-25-30)	ACT
30-015-41639	PLU CVX JV BS 025H (23-25-30)	ACT
30-015-41693	PL CVX JV BS 022H (24-25-30)	ACT
30-015-42009	POKER LAKE UNIT 323H	ACT
30-015-42054	PLU CVX JV RR 009H (32-25-30)	ACT
30-015-42111	PLU CVX JV BS 027H (03-25-31)	ACT
30-015-42112	POKER LAKE UNIT 457H	ACT
30-015-42158	PLU CVX JV RR 010H (20-25-30)	ACT
30-015-42246	POKER LAKE UNIT 431H	ACT
30-015-42365	PL CVX JV BS 029H (02-25-30)	ACT
30-015-42374	POKER LAKE UNIT 430H	ACT
30-015-42375	PL CVX JV BS 026H (23-24-30)	ACT
30-015-42390	PL CVX JV PC 021H (17-25-30)	ACT
30-015-42393	PL CVX JV BS 028H (23-24-30)	ACT
30-015-42427	PLU CVX JV BS 035H (19-24-31)	ACT
30-015-42428	PLU CVX JV BS 036H (19-24-31)	ACT
30-015-42470	POKER LAKE UNIT 455H	ACT
30-015-42488	POKER LAKE UNIT 432H	ACT
30-015-42496	PLU CVX JV BS 030H (03-25-31)	ACT
30-015-42574	POKER LAKE UNIT 456H	ACT
30-015-42630	PLU CVX JV PB 008H (32-25-31)	ACT
30-015-42639	PLU CVX JV PB 007H (20-25-31)	ACT
30-015-42651	POKER LAKE UNIT 450Y	ACT
30-015-42667	PLU CVX JV BS 034H (20-25-31)	ACT
30-015-42668	PLU CVX JV PC 020H (21-24-30)	ACT
30-015-42669	PLU CVX JV PC 019H (21-24-30)	ACT
30-015-43310	PLU PIERCE CANYON 17 SWD 001	ACT
30-015-44891	POKER LAKE UNIT 18 BD 103H	WOC
30-015-44892	POKER LAKE UNIT 18 BD 104H	WOC
30-015-44893	POKER LAKE UNIT 18 BD 121H	WOC
30-015-44894	POKER LAKE UNIT 18 BD 122H	WOC
30-015-44896	POKER LAKE UNIT 18 BD 124H	WOC
30-015-44897	POKER LAKE UNIT 18 BD 161H	WOC
30-015-42452	POKER LAKE UNIT 23 DTD 108H	ACT
30-015-42592	POKER LAKE UNIT 23 DTD 907H	ACT

**POKER LAKE UNIT WELL STATUS LIST 2018**

30-015-43230	POKER LAKE UNIT 359H	ACT
30-015-45237	POKER LAKE UNIT 36 DTD STATE SWD 1	WOC
30-015-43623	POKER LAKE UNIT 464H	ACT
30-015-43425	POKER LAKE UNIT 474H	P&A
30-015-44938	POKER LAKE UNIT 474Y	ACT
30-015-43639	POKER LAKE UNIT 486H	P&A
30-015-45128	POKER LAKE UNIT 486Y	WOC



## APD Status and Planned Wells

WELL NAME	API/APD STATUS	EST SPUD YEAR	EST LAT LENGTH	TARGET FORMATION
Brushy Draw 31 Federal 108H	30015451960000	2019	10000	WOLFCAMP
Brushy Draw 31 Federal 124H	30015451970000	2019	12500	WOLFCAMP
Brushy Draw 31 Federal 128H	30015451990000	2019	10000	WOLFCAMP
Brushy Draw 31 Federal 705H	30015452000000	2019	10000	BONE SPRING
Brushy Draw 31 Federal 905H	APD Approved	2019	10000	BONE SPRING
Poker Lake Unit 13 DTD 102H	APD Submitted	2019	12000	WOLFCAMP
Poker Lake Unit 13 DTD 104H	APD Submitted	2019	12000	WOLFCAMP
Poker Lake Unit 13 DTD 106H	APD Submitted	2019	12000	WOLFCAMP
Poker Lake Unit 13 DTD 108H	APD Submitted	2019	12000	WOLFCAMP
Poker Lake Unit 13 DTD 121H	APD Submitted	2019	12000	WOLFCAMP
Poker Lake Unit 13 DTD 122H	APD Submitted	2019	12000	WOLFCAMP
Poker Lake Unit 13 DTD 123H	APD Submitted	2019	12000	WOLFCAMP
Poker Lake Unit 13 DTD 124H	APD Submitted	2019	12000	WOLFCAMP
Poker Lake Unit 13 DTD 125H	APD Submitted	2019	12000	WOLFCAMP
Poker Lake Unit 13 DTD 126H	APD Submitted	2019	12000	WOLFCAMP
Poker Lake Unit 13 DTD 127H	APD Submitted	2019	12000	WOLFCAMP
Poker Lake Unit 13 DTD 128H	APD Submitted	2019	12000	WOLFCAMP
Poker Lake Unit 13 DTD 701H	APD Submitted	2019	12000	BONE SPRING
Poker Lake Unit 13 DTD 703H	APD Submitted	2019	12000	BONE SPRING
Poker Lake Unit 13 DTD 705H	APD Submitted	2019	12000	BONE SPRING
Poker Lake Unit 13 DTD 707H	APD Submitted	2019	12000	BONE SPRING
Poker Lake Unit 13 DTD 901H	APD Submitted	2019	12000	BONE SPRING
Poker Lake Unit 13 DTD 903H	APD Submitted	2019	12000	BONE SPRING
Poker Lake Unit 13 DTD 905H	APD Submitted	2019	12000	BONE SPRING
Poker Lake Unit 13 DTD 907H	APD Submitted	2019	12000	BONE SPRING
Poker Lake Unit 15 TWR 102H	30015450530000	2019	12500	WOLFCAMP
Poker Lake Unit 15 TWR 104H	30015450540000	2019	12500	WOLFCAMP
Poker Lake Unit 15 TWR 106H	30045450550000	2019	10000	WOLFCAMP
Poker Lake Unit 15 TWR 108H	30015454520000	2019	10000	WOLFCAMP
Poker Lake Unit 15 TWR 127H	30015452020000	2019	10000	WOLFCAMP
Poker Lake Unit 15 TWR 128H	30015450580000	2019	10000	WOLFCAMP
Poker Lake Unit 15 TWR 901H	30015450250000	2019	12500	WOLFCAMP
Poker Lake Unit 15 TWR 903H	30015454530000	2019	12500	WOLFCAMP
Poker Lake Unit 15 TWR 905H	30015450610000	2019	10000	WOLFCAMP
Poker Lake Unit 15 TWR 907H	30015450620000	2019	10000	WOLFCAMP
Poker Lake Unit 18 BD 101H	30015448990000	2019	7500	WOLFCAMP
Poker Lake Unit 18 TWR 106H	APD will be submitted	2019	12000	WOLFCAMP
Poker Lake Unit 18 TWR 108H	APD will be submitted	2019	12000	WOLFCAMP
Poker Lake Unit 18 TWR 701H	APD will be submitted	2019	12000	BONE SPRING
Poker Lake Unit 20 BD 102H	30015454680000	2019	10000	WOLFCAMP
Poker Lake Unit 20 BD 104H	30015454690000	2019	10000	WOLFCAMP
Poker Lake Unit 20 BD 121H	30015456200000	2019	10000	WOLFCAMP
Poker Lake Unit 20 BD 122H	30015456210000	2019	10000	WOLFCAMP
Poker Lake Unit 20 BD 123H	30015456220000	2019	10000	WOLFCAMP
Poker Lake Unit 20 BD 124H	30015456230000	2019	10000	WOLFCAMP
Poker Lake Unit 20 BD 701H	30015454920000	2019	10000	BONE SPRING
Poker Lake Unit 20 BD 703H	30015454720000	2019	10000	BONE SPRING
Poker Lake Unit 20 BD 901H	30015454740000	2019	10000	BONE SPRING
Poker Lake Unit 20 BD 903H	30015454930000	2019	10000	BONE SPRING
Poker Lake Unit 25 BD 102H	APD Submitted	2019	15000	WOLFCAMP
Poker Lake Unit 25 BD 104H	APD Submitted	2019	15000	WOLFCAMP
Poker Lake Unit 25 BD 121H	APD Submitted	2019	15000	WOLFCAMP
Poker Lake Unit 25 BD 122H	APD Submitted	2019	15000	WOLFCAMP
Poker Lake Unit 25 BD 123H	APD Submitted	2019	15000	WOLFCAMP
Poker Lake Unit 25 BD 124H	APD Submitted	2019	15000	WOLFCAMP
Poker Lake Unit 25 BD 701H	APD Submitted	2019	15000	BONE SPRING
Poker Lake Unit 25 BD 703H	APD Submitted	2019	15000	BONE SPRING
Poker Lake Unit 25 BD 901H	APD Submitted	2019	15000	BONE SPRING
Poker Lake Unit 25 BD 903H	APD Submitted	2019	15000	BONE SPRING
Poker Lake Unit 28 BS 102H	30015454780000	2019	13000	WOLFCAMP
Poker Lake Unit 28 BS 104H	30015454790000	2019	12000	WOLFCAMP



## APD Status and Planned Wells

Poker Lake Unit 28 BS 121H	30015454800000	2019	13000	WOLFCAMP
Poker Lake Unit 28 BS 122H	30015454810000	2019	13000	WOLFCAMP
Poker Lake Unit 28 BS 123H	30015454820000	2019	12000	WOLFCAMP
Poker Lake Unit 28 BS 124H	30015454830000	2019	12000	WOLFCAMP
Poker Lake Unit 28 BS 701H	30015454870000	2019	13000	BONE SPRING
Poker Lake Unit 28 BS 703H	30015454880000	2019	12000	BONE SPRING
Poker Lake Unit 28 BS 901H	30015454890000	2019	13000	BONE SPRING
Poker Lake Unit 28 BS 903H	30015454900000	2019	12000	BONE SPRING
Poker Lake Unit 29 BS 102H	APD Submitted	2019	12000	WOLFCAMP
Poker Lake Unit 29 BS 104H	APD Submitted	2019	12000	WOLFCAMP
Poker Lake Unit 16 BS State SWD 1	30015452240000	2019	N/A	DEVONIAN
Poker Lake Unit 21 TWR SWD 9	APD will be submitted	2019	N/A	DEVONIAN
Poker Lake Unit 16 TWR State SWD 1	30015452360000	2019	N/A	DEVONIAN
Poker Lake Unit 2 TD State SWD 1	30015452230000	2019	N/A	DEVONIAN
Brushy Draw 30 Federal 102H	30015451860000	2020	10000	WOLFCAMP
Brushy Draw 30 Federal 106H	30015451880000	2020	10000	WOLFCAMP
Brushy Draw 30 Federal 122H	30015451900000	2020	12500	WOLFCAMP
Brushy Draw 30 Federal 126H	30015451930000	2020	12500	WOLFCAMP
Brushy Draw 30 Federal 703H	30015451950000	2020	10000	BONE SPRING
Brushy Draw 31 Federal 127H	30015451980000	2020	10000	WOLFCAMP
Brushy Draw 31 Federal 707H	30015452010000	2020	10000	BONE SPRING
Brushy Draw 31 Federal 907H	APD Approved	2020	10000	BONE SPRING
Poker Lake Unit 14 Gin SWD 1	APD will be submitted	2020	N/A	DEVONIAN
Poker Lake Unit 17 TWR 102H	APD Submitted	2020	12000	WOLFCAMP
Poker Lake Unit 17 TWR 106H	APD Submitted	2020	12000	WOLFCAMP
Poker Lake Unit 17 TWR 108H	APD Submitted	2020	12000	WOLFCAMP
Poker Lake Unit 17 TWR 121H	APD Submitted	2020	12000	WOLFCAMP
Poker Lake Unit 17 TWR 122H	APD Submitted	2020	12000	WOLFCAMP
Poker Lake Unit 17 TWR 123H	APD Submitted	2020	12000	WOLFCAMP
Poker Lake Unit 17 TWR 124H	APD Submitted	2020	12000	WOLFCAMP
Poker Lake Unit 17 TWR 125H	APD Submitted	2020	12000	WOLFCAMP
Poker Lake Unit 17 TWR 126H	APD Submitted	2020	12000	WOLFCAMP
Poker Lake Unit 17 TWR 127H	APD Submitted	2020	12000	WOLFCAMP
Poker Lake Unit 17 TWR 128H	APD Submitted	2020	12000	WOLFCAMP
Poker Lake Unit 17 TWR 701H	APD Submitted	2020	12000	BONE SPRING
Poker Lake Unit 17 TWR 703H	APD Submitted	2020	12000	BONE SPRING
Poker Lake Unit 17 TWR 707H	APD Submitted	2020	12000	BONE SPRING
Poker Lake Unit 17 TWR 901H	APD Submitted	2020	12000	BONE SPRING
Poker Lake Unit 17 TWR 903H	APD Submitted	2020	12000	BONE SPRING
Poker Lake Unit 17 TWR 905H	APD Submitted	2020	12000	BONE SPRING
Poker Lake Unit 17 TWR 907H	APD Submitted	2020	12000	BONE SPRING
Poker Lake Unit 18 BD 152H (703H)	30015448980000	2020	7500	WOLFCAMP
Poker Lake Unit 18 BD 154H (123H)	30015448950000	2020	7500	WOLFCAMP
Poker Lake Unit 18 BD 163H (903H)	30015449000000	2020	7500	WOLFCAMP
Poker Lake Unit 18 TWR 102H	APD will be submitted	2020	12000	WOLFCAMP
Poker Lake Unit 18 TWR 104H	APD will be submitted	2020	12000	WOLFCAMP
Poker Lake Unit 18 TWR 121H	APD will be submitted	2020	12000	WOLFCAMP
Poker Lake Unit 18 TWR 122H	APD will be submitted	2020	12000	WOLFCAMP
Poker Lake Unit 18 TWR 123H	APD will be submitted	2020	12000	WOLFCAMP
Poker Lake Unit 18 TWR 124H	APD will be submitted	2020	12000	WOLFCAMP
Poker Lake Unit 18 TWR 125H	APD will be submitted	2020	12000	WOLFCAMP
Poker Lake Unit 18 TWR 126H	APD will be submitted	2020	12000	WOLFCAMP
Poker Lake Unit 18 TWR 127H	APD will be submitted	2020	12000	WOLFCAMP
Poker Lake Unit 18 TWR 128H	APD will be submitted	2020	12000	WOLFCAMP
Poker Lake Unit 18 TWR 703H	APD will be submitted	2020	12000	BONE SPRING
Poker Lake Unit 18 TWR 705H	APD will be submitted	2020	12000	BONE SPRING
Poker Lake Unit 18 TWR 707H	APD will be submitted	2020	12000	BONE SPRING
Poker Lake Unit 18 TWR 901H	APD will be submitted	2020	12000	BONE SPRING
Poker Lake Unit 18 TWR 903H	APD will be submitted	2020	12000	BONE SPRING
Poker Lake Unit 18 TWR 905H	APD will be submitted	2020	12000	BONE SPRING
Poker Lake Unit 18 TWR 907H	APD will be submitted	2020	12000	BONE SPRING
Poker Lake Unit 20 BD 106H	APD Approved	2020	10000	WOLFCAMP



## APD Status and Planned Wells

Poker Lake Unit 21 BD 102H	30015454760000	2020	10000	WOLFCAMP
Poker Lake Unit 21 BD 104H	30015455120000	2020	10000	WOLFCAMP
Poker Lake Unit 21 BD 121H	30015455130000	2020	10000	WOLFCAMP
Poker Lake Unit 21 BD 122H	APD Approved	2020	10000	WOLFCAMP
Poker Lake Unit 21 BD 123H	30015455140000	2020	10000	WOLFCAMP
Poker Lake Unit 21 BD 124H	30015455150000	2020	10000	WOLFCAMP
Poker Lake Unit 21 BD 701H	APD Approved	2020	10000	BONE SPRING
Poker Lake Unit 21 BD 703H	APD Approved	2020	10000	BONE SPRING
Poker Lake Unit 21 BD 901H	30015454770000	2020	10000	BONE SPRING
Poker Lake Unit 21 BD 903H	APD Approved	2020	10000	BONE SPRING
Poker Lake Unit 26 Bridge SWD 1	APD will be submitted	2020	N/A	DEVONIAN
Poker Lake Unit 26 BD 102H	APD will be submitted	2020	15000	WOLFCAMP
Poker Lake Unit 26 BD 104H	APD will be submitted	2020	15000	WOLFCAMP
Poker Lake Unit 26 BD 121H	APD will be submitted	2020	15000	WOLFCAMP
Poker Lake Unit 26 BD 122H	APD will be submitted	2020	15000	WOLFCAMP
Poker Lake Unit 26 BD 123H	APD will be submitted	2020	15000	WOLFCAMP
Poker Lake Unit 26 BD 124H	APD will be submitted	2020	15000	WOLFCAMP
Poker Lake Unit 26 BD 701H	APD will be submitted	2020	15000	BONE SPRING
Poker Lake Unit 26 BD 703H	APD will be submitted	2020	15000	BONE SPRING
Poker Lake Unit 26 BD 901H	APD will be submitted	2020	15000	BONE SPRING
Poker Lake Unit 26 BD 903H	APD will be submitted	2020	15000	BONE SPRING
Poker Lake Unit 27 BD 121H	APD will be submitted	2020	15000	WOLFCAMP
Poker Lake Unit 27 BD 123H	APD will be submitted	2020	15000	WOLFCAMP
Poker Lake Unit 27 BD 701H	APD will be submitted	2020	15000	BONE SPRING
Poker Lake Unit 27 BD 703H	APD will be submitted	2020	15000	BONE SPRING
Poker Lake Unit 27 BD 901H	APD will be submitted	2020	15000	BONE SPRING
Poker Lake Unit 29 BS 121H	APD Submitted	2020	12000	WOLFCAMP
Poker Lake Unit 29 BS 122H	APD Submitted	2020	12000	WOLFCAMP
Poker Lake Unit 29 BS 123H	APD Submitted	2020	12000	WOLFCAMP
Poker Lake Unit 29 BS 124H	APD Submitted	2020	12000	WOLFCAMP
Poker Lake Unit 29 BS 701H	APD Submitted	2020	12000	BONE SPRING
Poker Lake Unit 29 BS 703H	APD Submitted	2020	12000	BONE SPRING
Poker Lake Unit 29 BS 901H	APD Submitted	2020	12000	BONE SPRING
Poker Lake Unit 29 BS 903H	APD Submitted	2020	12000	BONE SPRING
Poker Lake Unit 30 BS 102H	APD will be submitted	2020	12000	WOLFCAMP
Poker Lake Unit 30 BS 104H	APD will be submitted	2020	12000	WOLFCAMP
Poker Lake Unit 30 BS 121H	APD will be submitted	2020	12000	WOLFCAMP
Poker Lake Unit 30 BS 122H	APD will be submitted	2020	12000	WOLFCAMP
Poker Lake Unit 30 BS 123H	APD will be submitted	2020	12000	WOLFCAMP
Poker Lake Unit 30 BS 124H	APD will be submitted	2020	12000	WOLFCAMP
Poker Lake Unit 30 BS 701H	APD will be submitted	2020	12000	BONE SPRING
Poker Lake Unit 30 BS 703H	APD will be submitted	2020	12000	BONE SPRING
Poker Lake Unit 30 BS 903H	APD will be submitted	2020	12000	BONE SPRING
Poker Lake Unit 30 Canasta SWD 1	APD will be submitted	2020	N/A	DEVONIAN
Brushy Draw 30 Federal 104H	30015451870000	2021	10000	WOLFCAMP
Brushy Draw 30 Federal 121H	30015451890000	2021	12000	WOLFCAMP
Brushy Draw 30 Federal 123H	30015451910000	2021	12500	WOLFCAMP
Brushy Draw 30 Federal 125H	30015451920000	2021	12500	WOLFCAMP
Brushy Draw 30 Federal 701H	30015451940000	2021	12000	BONE SPRING
Brushy Draw 30 Federal 901H	30015451570000	2021	12000	BONE SPRING
Brushy Draw 30 Federal 903H	30015451580000	2021	10000	BONE SPRING
Poker Lake Unit 16 TWR 102H	APD will be submitted	2021	12000	WOLFCAMP
Poker Lake Unit 16 TWR 104H	APD will be submitted	2021	12000	WOLFCAMP
Poker Lake Unit 16 TWR 106H	APD will be submitted	2021	12000	WOLFCAMP
Poker Lake Unit 16 TWR 108H	APD will be submitted	2021	12000	WOLFCAMP
Poker Lake Unit 16 TWR 121H	APD will be submitted	2021	12000	WOLFCAMP
Poker Lake Unit 16 TWR 122H	APD will be submitted	2021	12000	WOLFCAMP
Poker Lake Unit 16 TWR 123H	APD will be submitted	2021	12000	WOLFCAMP
Poker Lake Unit 16 TWR 124H	APD will be submitted	2021	12000	WOLFCAMP
Poker Lake Unit 16 TWR 125H	APD will be submitted	2021	12000	WOLFCAMP
Poker Lake Unit 16 TWR 126H	APD will be submitted	2021	12000	WOLFCAMP
Poker Lake Unit 16 TWR 127H	APD will be submitted	2021	12000	WOLFCAMP



## APD Status and Planned Wells

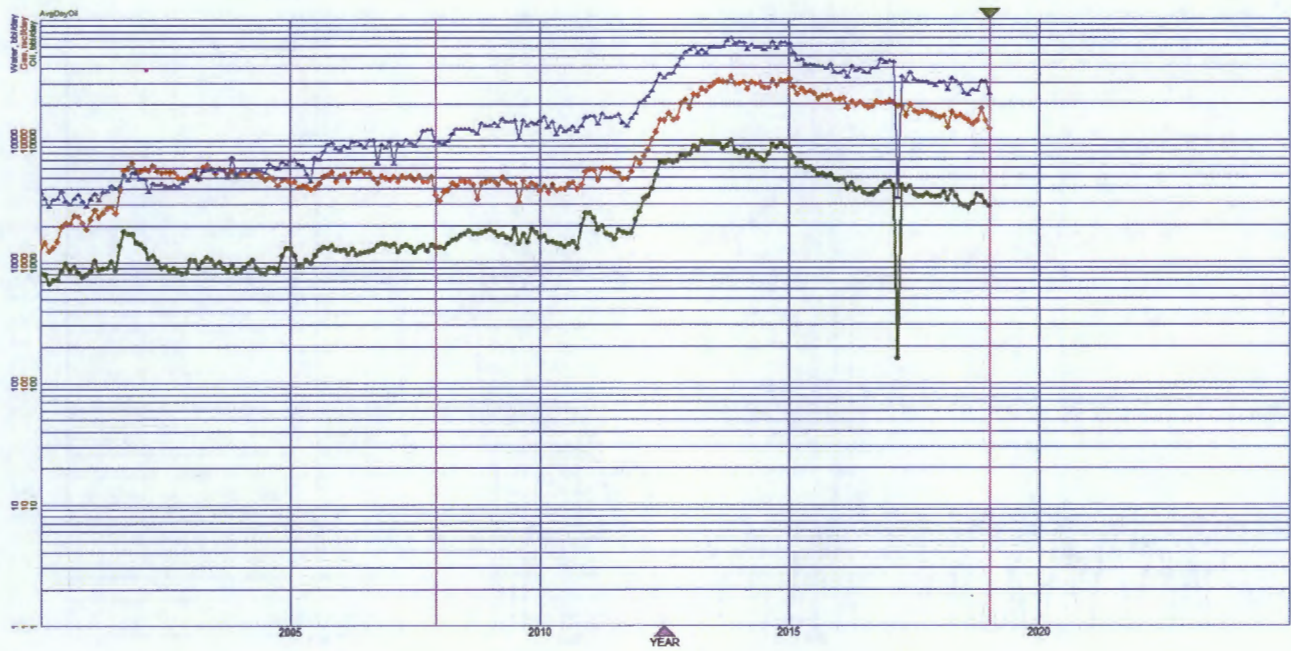
Poker Lake Unit 16 TWR 128H	APD will be submitted	2021	12000	WOLFCAMP
Poker Lake Unit 16 TWR 701H	APD will be submitted	2021	12000	BONE SPRING
Poker Lake Unit 16 TWR 703H	APD will be submitted	2021	12000	BONE SPRING
Poker Lake Unit 16 TWR 705H	APD will be submitted	2021	12000	BONE SPRING
Poker Lake Unit 16 TWR 707H	APD will be submitted	2021	12000	BONE SPRING
Poker Lake Unit 16 TWR 901H	APD will be submitted	2021	12000	BONE SPRING
Poker Lake Unit 16 TWR 903H	APD will be submitted	2021	12000	BONE SPRING
Poker Lake Unit 16 TWR 905H	APD will be submitted	2021	12000	BONE SPRING
Poker Lake Unit 16 TWR 907H	APD will be submitted	2021	12000	BONE SPRING
Poker Lake Unit 17 TWR 104H	APD Submitted	2021	12000	WOLFCAMP
Poker Lake Unit 17 TWR 705H	APD Submitted	2021	12000	BONE SPRING
Poker Lake Unit 20 BD 108H	30015454700000	2021	10000	WOLFCAMP
Poker Lake Unit 20 BD 125H	30015456240000	2021	10000	WOLFCAMP
Poker Lake Unit 20 BD 126H	30015456250000	2021	10000	WOLFCAMP
Poker Lake Unit 20 BD 127H	30015456260000	2021	10000	WOLFCAMP
Poker Lake Unit 20 BD 128H	30015456270000	2021	10000	WOLFCAMP
Poker Lake Unit 20 BD 705H	30015456280000	2021	10000	BONE SPRING
Poker Lake Unit 20 BD 707H	30015454730000	2021	10000	BONE SPRING
Poker Lake Unit 20 BD 905H	30015455380000	2021	10000	BONE SPRING
Poker Lake Unit 20 BD 907H	30015454750000	2021	10000	BONE SPRING
Poker Lake Unit 21 BD 106H	APD Approved	2021	12000	WOLFCAMP
Poker Lake Unit 21 BD 108H	APD Approved	2021	12000	WOLFCAMP
Poker Lake Unit 21 BD 125H	30015455160000	2021	12000	WOLFCAMP
Poker Lake Unit 21 BD 126H	30015455170000	2021	12000	WOLFCAMP
Poker Lake Unit 25 BD 106H	APD Submitted	2021	15000	WOLFCAMP
Poker Lake Unit 25 BD 125H	APD Submitted	2021	15000	WOLFCAMP
Poker Lake Unit 25 BD 126H	APD Submitted	2021	15000	WOLFCAMP
Poker Lake Unit 25 BD 127H	APD Submitted	2021	15000	WOLFCAMP
Poker Lake Unit 25 BD 128H	APD Submitted	2021	15000	WOLFCAMP
Poker Lake Unit 25 BD 705H	APD Submitted	2021	15000	BONE SPRING
Poker Lake Unit 25 BD 707H	APD Submitted	2021	15000	BONE SPRING
Poker Lake Unit 25 BD 905H	APD Submitted	2021	15000	BONE SPRING
Poker Lake Unit 25 BD 907H	APD Submitted	2021	15000	BONE SPRING
Poker Lake Unit 26 BD 108H	APD will be submitted	2021	15000	WOLFCAMP
Poker Lake Unit 27 BD 102H	APD will be submitted	2021	15000	WOLFCAMP
Poker Lake Unit 27 BD 104H	APD will be submitted	2021	15000	WOLFCAMP
Poker Lake Unit 27 BD 122H	APD will be submitted	2021	15000	WOLFCAMP
Poker Lake Unit 27 BD 124H	APD will be submitted	2021	15000	WOLFCAMP
Poker Lake Unit 27 BD 903H	APD will be submitted	2021	15000	BONE SPRING
Poker Lake Unit 28 BS 106H	30015455070000	2021	13000	WOLFCAMP
Poker Lake Unit 28 BS 108H	30015455400000	2021	13000	WOLFCAMP
Poker Lake Unit 28 BS 125H	30015455080000	2021	13000	WOLFCAMP
Poker Lake Unit 28 BS 126H	30015454840000	2021	13000	WOLFCAMP
Poker Lake Unit 28 BS 127H	30015455390000	2021	12000	WOLFCAMP
Poker Lake Unit 28 BS 128H	30015454850000	2021	13000	WOLFCAMP
Poker Lake Unit 28 BS 705H	APD Approved	2021	13000	BONE SPRING
Poker Lake Unit 28 BS 707H	APD Approved	2021	13000	BONE SPRING
Poker Lake Unit 28 BS 905H	30015455090000	2021	13000	BONE SPRING
Poker Lake Unit 28 BS 907H	30015454910000	2021	13000	BONE SPRING
Poker Lake Unit 29 BS 106H	APD Submitted	2021	12000	WOLFCAMP
Poker Lake Unit 29 BS 108H	APD Submitted	2021	12000	WOLFCAMP
Poker Lake Unit 29 BS 125H	APD Submitted	2021	12000	WOLFCAMP
Poker Lake Unit 29 BS 126H	APD Submitted	2021	12000	WOLFCAMP
Poker Lake Unit 29 BS 127H	APD Submitted	2021	12000	WOLFCAMP
Poker Lake Unit 29 BS 128H	APD Submitted	2021	12000	WOLFCAMP
Poker Lake Unit 29 BS 707H	APD Submitted	2021	12000	BONE SPRING
Poker Lake Unit 30 BS 901H	APD will be submitted	2021	12000	BONE SPRING
Poker Lake Unit 475H	APD will be submitted	2021	15000	WOLFCAMP
Poker Lake Unit 19 BD 108H	APD will be submitted	2022	7500	WOLFCAMP
Poker Lake Unit 19 BD 127H	APD will be submitted	2022	7500	WOLFCAMP
Poker Lake Unit 19 BD 128H	APD will be submitted	2022	7500	WOLFCAMP
Poker Lake Unit 19 BD 707H	APD will be submitted	2022	7500	BONE SPRING



## APD Status and Planned Wells

Poker Lake Unit 19 BD 907H	APD will be submitted	2022	7500	BONE SPRING
Poker Lake Unit 21 BD 127H	30015455180000	2022	12000	WOLFCAMP
Poker Lake Unit 21 BD 128H	30015455190000	2022	12000	WOLFCAMP
Poker Lake Unit 21 BD 705H	30015455200000	2022	12000	BONE SPRING
Poker Lake Unit 21 BD 707H	30015456080000	2022	12000	BONE SPRING
Poker Lake Unit 21 BD 905H	APD Approved	2022	12000	BONE SPRING
Poker Lake Unit 21 BD 907H	APD Approved	2022	12000	BONE SPRING
Poker Lake Unit 25 BD 108H	APD Submitted	2022	15000	WOLFCAMP
Poker Lake Unit 26 BD 106H	APD will be submitted	2022	15000	WOLFCAMP
Poker Lake Unit 26 BD 125H	APD will be submitted	2022	15000	WOLFCAMP
Poker Lake Unit 26 BD 126H	APD will be submitted	2022	15000	WOLFCAMP
Poker Lake Unit 26 BD 127H	APD will be submitted	2022	15000	WOLFCAMP
Poker Lake Unit 26 BD 128H	APD will be submitted	2022	15000	WOLFCAMP
Poker Lake Unit 26 BD 705H	APD will be submitted	2022	15000	BONE SPRING
Poker Lake Unit 26 BD 707H	APD will be submitted	2022	15000	BONE SPRING
Poker Lake Unit 26 BD 905H	APD will be submitted	2022	15000	BONE SPRING
Poker Lake Unit 26 BD 907H	APD will be submitted	2022	15000	BONE SPRING
Poker Lake Unit 27 BD 106H	APD will be submitted	2022	15000	WOLFCAMP
Poker Lake Unit 27 BD 108H	APD will be submitted	2022	15000	WOLFCAMP
Poker Lake Unit 27 BD 125H	APD will be submitted	2022	15000	WOLFCAMP
Poker Lake Unit 27 BD 126H	APD will be submitted	2022	15000	WOLFCAMP
Poker Lake Unit 27 BD 807H	APD will be submitted	2022	15000	BONE SPRING
Poker Lake Unit 27 BD 808H	APD will be submitted	2022	15000	BONE SPRING
Poker Lake Unit 29 BS 705H	APD Submitted	2022	12000	BONE SPRING
Poker Lake Unit 29 BS 905H	APD Submitted	2022	12000	BONE SPRING
Poker Lake Unit 29 BS 907H	APD Submitted	2022	12000	BONE SPRING
Poker Lake Unit 30 BS 106H	APD will be submitted	2022	12000	WOLFCAMP
Poker Lake Unit 30 BS 108H	APD will be submitted	2022	12000	WOLFCAMP
Poker Lake Unit 30 BS 125H	APD will be submitted	2022	12000	WOLFCAMP
Poker Lake Unit 30 BS 126H	APD will be submitted	2022	12000	WOLFCAMP
Poker Lake Unit 30 BS 127H	APD will be submitted	2022	12000	WOLFCAMP
Poker Lake Unit 30 BS 128H	APD will be submitted	2022	12000	WOLFCAMP
Poker Lake Unit 30 BS 705H	APD will be submitted	2022	12000	BONE SPRING
Poker Lake Unit 30 BS 707H	APD will be submitted	2022	12000	BONE SPRING
Poker Lake Unit 30 BS 905H	APD will be submitted	2022	12000	BONE SPRING
Poker Lake Unit 30 BS 907H	APD will be submitted	2022	12000	BONE SPRING
Poker Lake Unit 27 BD 705H	APD will be submitted	2023	15000	BONE SPRING
Poker Lake Unit 27 BD 707H	APD will be submitted	2023	15000	BONE SPRING
Poker Lake Unit 27 BD 905H	APD will be submitted	2023	15000	BONE SPRING
Poker Lake Unit 27 BD 907H	APD will be submitted	2023	15000	BONE SPRING
Poker Lake Unit 15 TWR 121H	30015449430000	Inventory	12500	WOLFCAMP
Poker Lake Unit 15 TWR 122H	30015454510000	Inventory	12500	WOLFCAMP
Poker Lake Unit 15 TWR 123H	30015450230000	Inventory	12500	WOLFCAMP
Poker Lake Unit 15 TWR 124H	30015452030000	Inventory	12500	WOLFCAMP
Poker Lake Unit 15 TWR 125H	30015450560000	Inventory	10000	WOLFCAMP
Poker Lake Unit 15 TWR 126H	30015450570000	Inventory	10000	WOLFCAMP
Poker Lake Unit 15 TWR 703H	30015450600000	Inventory	12500	BONE SPRING
Poker Lake Unit 15 TWR 705H	30015449440000	Inventory	10000	BONE SPRING
Poker Lake Unit 15 TWR 707H	30015450240000	Inventory	10000	BONE SPRING
Poker Lake Unit 28 BS SWD 3	APD Not Submitted	Inventory	N/A	DEVONIAN
Poker Lake Unit 30 BS SWD 6	APD Not Submitted	Inventory	N/A	DEVONIAN
Poker Lake Unit 32 BS SWD 11	30015445690000	Inventory	N/A	DEVONIAN
Poker Lake Unit 32 BD State SWD 1	APD Not Submitted	Inventory	N/A	DEVONIAN
Poker Lake Unit 27 TWR SWD 24	APD Not Submitted	Inventory	N/A	DEVONIAN
Poker Lake Unit 32 TWR SWD 25	APD Not Submitted	Inventory	N/A	DEVONIAN
Poker Lake Unit 9 TWR SWD 1	APD Not Submitted	Inventory	N/A	DEVONIAN

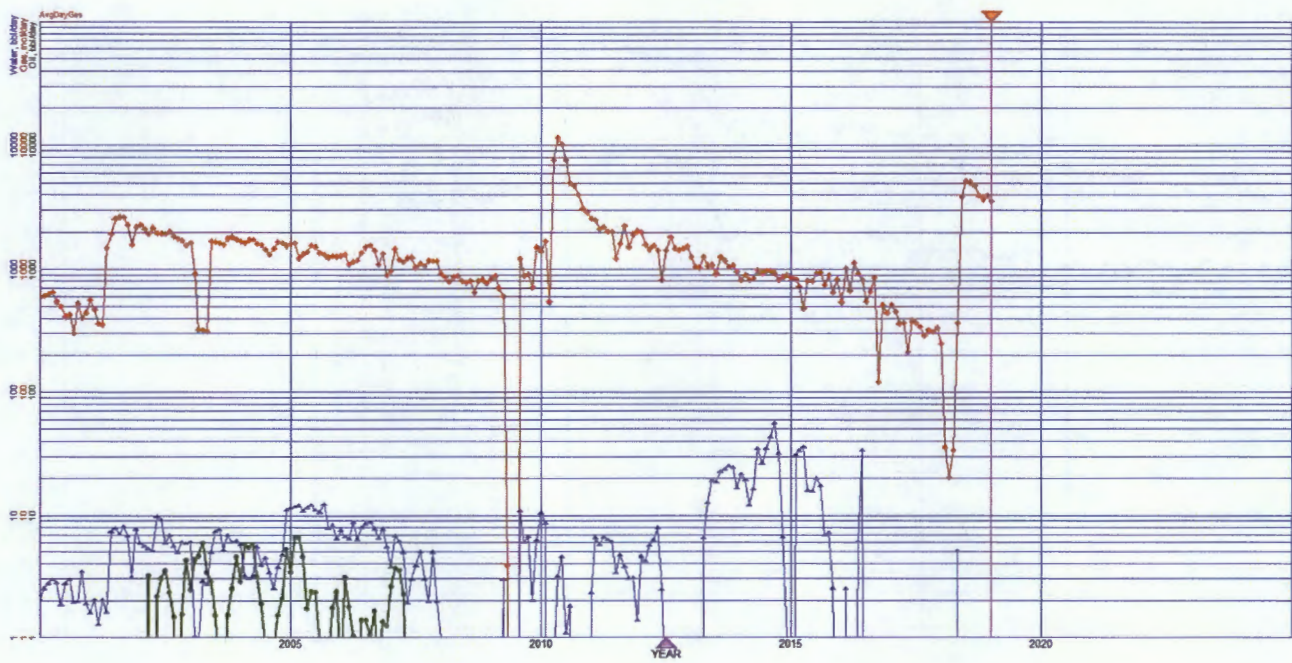
# POKER LAKE UNIT – DELAWARE



Well Count: 187

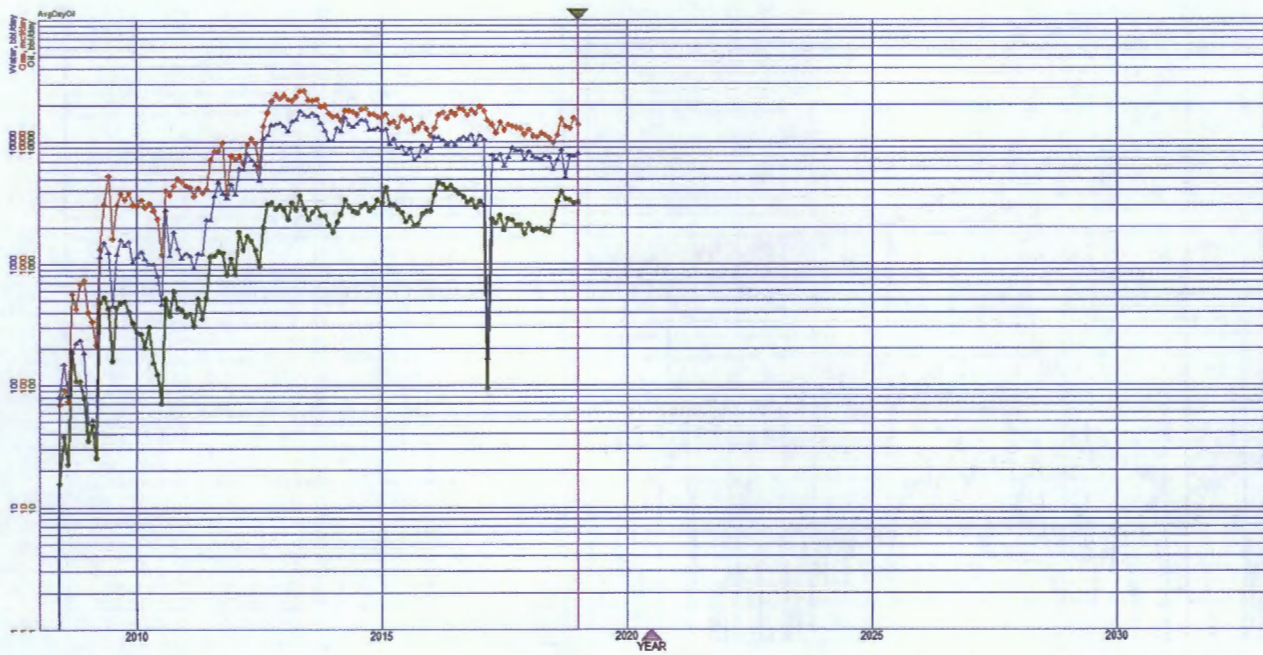


# POKER LAKE UNIT – MORROW

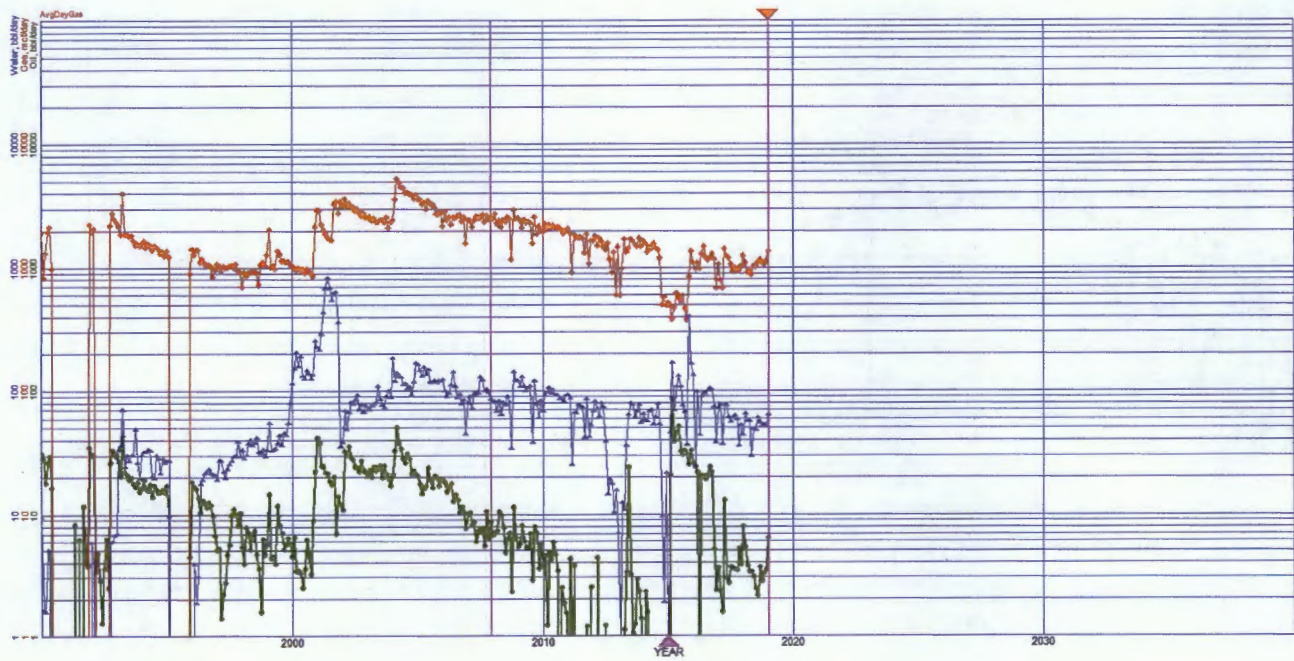


Well Count: 5

# POKER LAKE UNIT – BONE SPRING



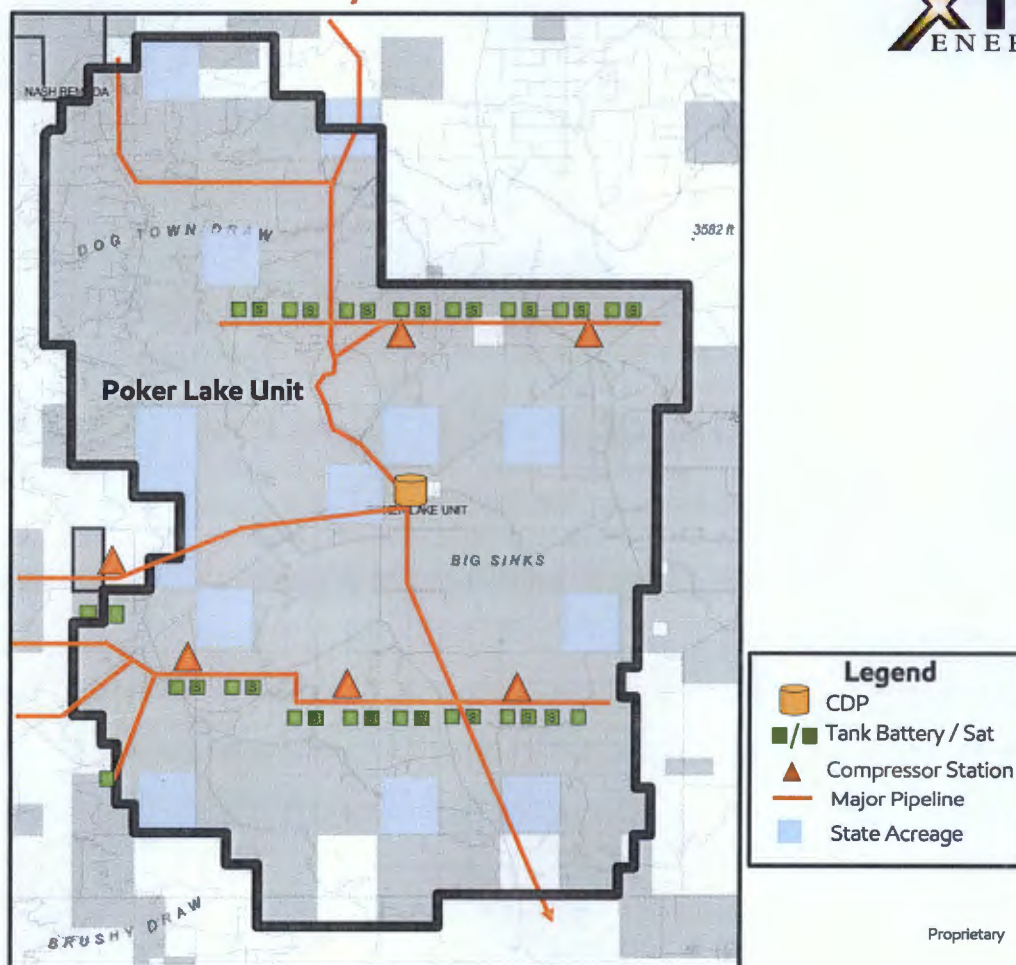
POKER LAKE UNIT – WOLFCAMP A, E



Well Count: 11



# Poker Lake Unit Facility Plan



ExxonMobil