

# Additional Information

2/17/20

## Garcia, John A, EMNRD

---

**From:** Kaitlyn A. Luck <KALuck@hollandhart.com>  
**Sent:** Monday, February 17, 2020 11:56 AM  
**To:** Garcia, John A, EMNRD  
**Subject:** [EXT] RE: Case 20938 Chisholm Energy Oprating, LLC  
**Attachments:** DARK CANYON 15-22 WCA STATE COM 6H\_APD C102\_11072019.pdf; DARK CANYON 15-22 WCA STATE COM 7H\_APD C102\_11072019.pdf; Case No. 20938\_Order Exhibit A.pdf

John,

Thanks for catching that error on the C-102s. Attached are corrected C-102s for your records which reflect the wells are located in **Range 26 East**. I've also attached a corrected Exhibit A.

Best,

Kaitlyn

---

**From:** Garcia, John A, EMNRD <JohnA.Garcia@state.nm.us>  
**Sent:** Monday, February 17, 2020 10:21 AM  
**To:** Kaitlyn A. Luck <KALuck@hollandhart.com>  
**Subject:** Case 20938 Chisholm Energy Oprating, LLC

External Email

Kaitlyn,

In case 20938 the spacing unit description has Range 26 east, whereas the C-102's have the wells being completed in range 31 east. Which one is the correct location.

Thank you,

**John Garcia**

*Petroleum Specialist*  
Oil Conservation Division  
1220 South St. Francis Drive  
Santa Fe, New Mexico 87505  
505-476-3441



## **Exhibit "A"**

Applicant: Chisholm Energy Operating, LLC  
Operator: Chisholm Energy Operating, LLC (OGRID 372137)

Spacing Unit: Horizontal Gas  
Building Blocks: Quarter Section Equivalent  
Spacing Unit Size: 480 acres (more or less)  
Orientation of Unit: North/South

Spacing Unit Description:  
E/2 of Section 15, and the NE/4 of Section 22, Township 23 South, Range 26 East, NMPM, Eddy County, New Mexico

Pooling this Vertical Extent: Wolfcamp Formation  
Depth Severance? (Yes/No): No

Pool: Purple Sage; Wolfcamp Gas (Pool code 98220)  
Pool Spacing Unit Size: Quarter Sections  
Governing Well Setbacks: Special Rules for the Purple Sage Gas Pool Apply  
Pool Rules: Purple Sage and Horizontal Well Rules

Proximity Tracts: No

Monthly charge for supervision: While drilling: \$7500 While producing: \$750  
As the charge for risk, 200 percent of reasonable well costs.

### **Proposed Wells:**

#### **Dark Canyon 15-22 WCA Well No. 6H, API No. 30-015-44329**

SHL: 200 feet from the North line and 1535 feet from the East line,  
(Unit B) of Section 15, Township 23 South, Range 26 East, NMPM.  
BHL: 2168 feet from the North line and 2250 feet from the East line,  
(Unit G) of Section 22, Township 23 South, Range 26 East, NMPM.

Completion Target: Wolfcamp A at approx 8845 feet TVD.  
Well Orientation: North to South  
Completion Location expected to be: standard

#### **Dark Canyon 15-22 WCA Well No. 7H, API No. 30-015-44331**

SHL: 200 feet from the North line and 1505 feet from the East line,  
(Unit B) of Section 15, Township 23 South, Range 26 East, NMPM.  
BHL: 2254 feet from the North line and 900 feet from the East line,  
(Unit H) of Section 22, Township 23 South, Range 26 East, NMPM.

Case No. 20938  
Order No. R-\_\_\_\_\_  
Page 2 of 2

Completion Target: Wolfcamp A at approx 8845 feet TVD.  
Well Orientation: North to South  
Completion Location expected to be: standard

District I  
1625 N. French Dr., Hobbs, NM 88240  
Phone: (575) 393-6161 Fax: (575) 393-0720  
District II  
811 S. First St., Artesia, NM 88210  
Phone: (575) 748-1283 Fax: (575) 748-9720  
District III  
1000 Rio Brazos Road, Aztec, NM 87410  
Phone: (505) 334-6178 Fax: (505) 334-6170  
District IV  
1220 S. St. Francis Dr., Santa Fe, NM 87505  
Phone: (505) 476-3460 Fax: (505) 476-3462

State of New Mexico  
Energy, Minerals & Natural Resources Department  
OIL CONSERVATION DIVISION  
1220 South St. Francis Dr.  
Santa Fe, NM 87505

Form C-102  
Revised August 1, 2011  
Submit one copy to appropriate  
District Office  
☒ AMENDED REPORT

WELL LOCATION AND ACREAGE DEDICATION PLAT

<sup>1</sup> API Number 30-015-44329	<sup>2</sup> Pool Code 98220	<sup>3</sup> Pool Name PURPLE SAGE; WOLFCAMP
<sup>4</sup> Property Code	<sup>5</sup> Property Name DARK CANYON 15-22 WCA STATE COM	<sup>6</sup> Well Number 6H
<sup>7</sup> OGRID No. 372137	<sup>8</sup> Operator Name CHISHOLM ENERGY OPERATING, LLC	<sup>9</sup> Elevation 3304.0

<sup>10</sup> Surface Location

UL or lot no.	Section	Township	Range	Lot Idn	Feet from the	North/South line	Feet from the	East/West line	County
B	15	23 S	26 E		200	NORTH	1535	EAST	EDDY

<sup>11</sup> Bottom Hole Location If Different From Surface

UL or lot no.	Section	Township	Range	Lot Idn	Feet from the	North/South line	Feet from the	East/West line	County
G	22	23 S	26 E		2168	NORTH	2250	EAST	EDDY

<sup>12</sup> Dedicated Acres 480	<sup>13</sup> Joint or Infill	<sup>14</sup> Consolidation Code	<sup>15</sup> Order No.
--------------------------------------	-------------------------------	----------------------------------	-------------------------

No allowable will be assigned to this completion until all interests have been consolidated or a non-standard unit has been approved by the division.

	<p><b><sup>17</sup> OPERATOR CERTIFICATION</b></p> <p>I hereby certify that the information contained herein is true and complete to the best of my knowledge and belief, and that this organization either owns a working interest or unleased mineral interest in the land including the proposed bottom hole location or has a right to drill this well at this location pursuant to a contract with an owner of such a mineral or working interest, or to a voluntary pooling agreement or a compulsory pooling order heretofore entered by the division.</p> <p><i>Jennifer Elrod</i> 11/07/2019 Signature Date</p> <p>JENNIFER ELROD Printed Name</p> <p>JELROD@CHISHOLMENERGY.COM E-mail Address</p> <p><b><sup>18</sup> SURVEYOR CERTIFICATION</b></p> <p>I hereby certify that the well location shown on this plat was plotted from field notes of actual surveys made by me or under my supervision, and that the same is true and correct to the best of my belief.</p> <p>SEPTEMBER 23, 2019 Date of Survey</p> <p><i>William F. Jaramillo</i> Signature and Seal of Professional Surveyor</p> <p>Certificate Number: 12797 Survey No. 7513A</p>
--	---------------------------------------------------------------------------------------------------------------------------------------------------------------------------------------------------------------------------------------------------------------------------------------------------------------------------------------------------------------------------------------------------------------------------------------------------------------------------------------------------------------------------------------------------------------------------------------------------------------------------------------------------------------------------------------------------------------------------------------------------------------------------------------------------------------------------------------------------------------------------------------------------------------------------------------------------------------------------------------------------------------------------------------------------------------------------------------------------------------------------------------------------------------------------------------

Intent ☒ As Drilled ☐

API #  
30-015-44329

Operator Name:	Property Name:	Well Number
<b>CHISHOLM ENERGY OPERATING, LLC</b>	<b>DARK CANYON 15-22 WCA</b>	<b>6H</b>

Kick Off Point (KOP)

UL <b>B</b>	Section <b>15</b>	Township <b>23S</b>	Range <b>26E</b>	Lot	Feet <b>200</b>	From N/S <b>NORTH</b>	Feet <b>1535</b>	From E/W <b>EAST</b>	County <b>EDDY</b>
Latitude <b>32.3112916</b>					Longitude <b>104.2772160</b>			NAD <b>83</b>	

First Take Point (FTP)

UL <b>B</b>	Section <b>15</b>	Township <b>23S</b>	Range <b>26E</b>	Lot	Feet <b>330</b>	From N/S <b>NORTH</b>	Feet <b>2250</b>	From E/W <b>EAST</b>	County <b>EDDY</b>
Latitude <b>32.3108879</b>					Longitude <b>104.2795297</b>			NAD <b>83</b>	

Last Take Point (LTP)

UL <b>G</b>	Section <b>22</b>	Township <b>23S</b>	Range <b>26E</b>	Lot	Feet <b>2168</b>	From N/S <b>NORTH</b>	Feet <b>2250</b>	From E/W <b>EAST</b>	County <b>EDDY</b>
Latitude <b>32.2908409</b>					Longitude <b>104.2795970</b>			NAD <b>83</b>	

Is this well the defining well for the Horizontal Spacing Unit? ☒

Is this well an infill well? ☐

If infill is yes please provide API if available, Operator Name and well number for Defining well for Horizontal Spacing Unit.

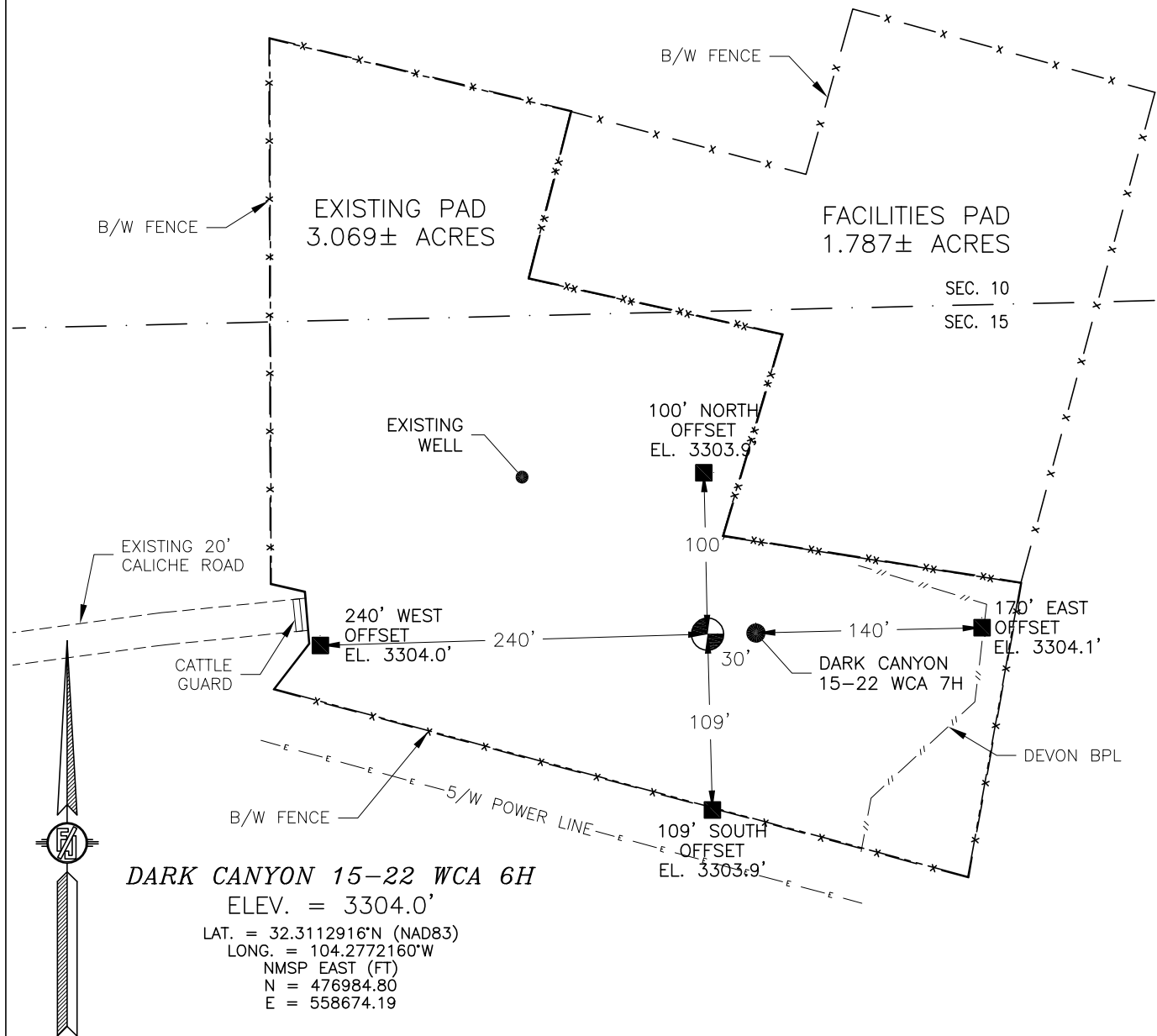
API #

Operator Name:	Property Name:	Well Number

KZ 06/29/2018

SECTION 15, TOWNSHIP 23 SOUTH, RANGE 26 EAST, N.M.P.M.  
EDDY COUNTY, STATE OF NEW MEXICO  
SITE MAP

NOTE: LATITUDE AND LONGITUDE COORDINATES ARE SHOWN USING THE NORTH AMERICAN DATUM OF 1983 (NAD83). LISTED NEW MEXICO STATE PLANE EAST COORDINATES ARE GRID (NAD83). BASIS OF BEARING AND DISTANCES USED ARE NEW MEXICO STATE PLANE EAST COORDINATES MODIFIED TO THE SURFACE



**DARK CANYON 15-22 WCA 6H**  
ELEV. = 3304.0'

LAT. = 32.3112916°N (NAD83)  
LONG. = 104.2772160°W  
NMSP EAST (FT)  
N = 476984.80  
E = 558674.19

010 50 100 200  
SCALE 1" = 100'

**DIRECTIONS TO LOCATION**

FROM US HIGHWAY 62-180 AND CR. 408 (DARK CANYON) GO NORTH ON US HIGHWAY 62-180 1.5 MILES, TURN LEFT AND GO WEST ON AIRPORT QUARRY ROAD 0.6 OF A MILE, TURN RIGHT ON CALICHE ROAD AND GO NORTH 0.35 OF A MILE, TURN RIGHT AND GO EAST 763' TO THE SOUTHWEST PAD CORNER FOR THIS LOCATION.

**CHISHOLM ENERGY OPERATING, LLC**  
**DARK CANYON 15-22 WCA 6H**  
LOCATED 200 FT. FROM THE NORTH LINE  
AND 1535 FT. FROM THE EAST LINE OF  
SECTION 15, TOWNSHIP 23 SOUTH,  
RANGE 26 EAST, N.M.P.M.  
EDDY COUNTY, STATE OF NEW MEXICO

SEPTEMBER 23, 2019

SURVEY NO. 7513A

I, FILIMON F. JARAMILLO, A NEW MEXICO REGISTERED PROFESSIONAL SURVEYOR CERTIFY THAT I DIRECTED AND AM RESPONSIBLE FOR THIS SURVEY, THAT THIS SURVEY IS TRUE AND CORRECT TO THE BEST OF MY KNOWLEDGE AND BELIEF AND THIS SURVEY AND PLAT MEET THE MINIMUM STANDARDS FOR SURVEYING IN NEW MEXICO.

9/23/19

DATE

**MADISON SURVEYING, INC.**

301 SOUTH CANAL  
(575) 234-3341

**CARLSBAD, NEW MEXICO**

District I  
1625 N. French Dr., Hobbs, NM 88240  
Phone: (575) 393-6161 Fax: (575) 393-0720  
District II  
811 S. First St., Artesia, NM 88210  
Phone: (575) 748-1283 Fax: (575) 748-9720  
District III  
1000 Rio Brazos Road, Aztec, NM 87410  
Phone: (505) 334-6178 Fax: (505) 334-6170  
District IV  
1220 S. St. Francis Dr., Santa Fe, NM 87505  
Phone: (505) 476-3460 Fax: (505) 476-3462

State of New Mexico  
Energy, Minerals & Natural Resources Department  
OIL CONSERVATION DIVISION  
1220 South St. Francis Dr.  
Santa Fe, NM 87505

Form C-102  
Revised August 1, 2011  
Submit one copy to appropriate  
District Office  
☒ AMENDED REPORT

WELL LOCATION AND ACREAGE DEDICATION PLAT

<sup>1</sup> API Number 30-015-44331	<sup>2</sup> Pool Code 98220	<sup>3</sup> Pool Name PURPLE SAGE; WOLFCAMP
<sup>4</sup> Property Code	<sup>5</sup> Property Name DARK CANYON 15-22 WCA STATE COM	<sup>6</sup> Well Number 7H
<sup>7</sup> OGRID No. 372137	<sup>8</sup> Operator Name CHISHOLM ENERGY OPERATING, LLC	<sup>9</sup> Elevation 3304.0

<sup>10</sup> Surface Location

UL or lot no.	Section	Township	Range	Lot Idn	Feet from the	North/South line	Feet from the	East/West line	County
B	15	23 S	26 E		200	NORTH	1505	EAST	EDDY

<sup>11</sup> Bottom Hole Location If Different From Surface

UL or lot no.	Section	Township	Range	Lot Idn	Feet from the	North/South line	Feet from the	East/West line	County
H	22	23 S	26 E		2254	NORTH	900	EAST	EDDY

<sup>12</sup> Dedicated Acres 480	<sup>13</sup> Joint or Infill	<sup>14</sup> Consolidation Code	<sup>15</sup> Order No.
--------------------------------------	-------------------------------	----------------------------------	-------------------------

No allowable will be assigned to this completion until all interests have been consolidated or a non-standard unit has been approved by the division.

	<p><b><sup>17</sup> OPERATOR CERTIFICATION</b></p> <p>I hereby certify that the information contained herein is true and complete to the best of my knowledge and belief, and that this organization either owns a working interest or unleased mineral interest in the land including the proposed bottom hole location or has a right to drill this well at this location pursuant to a contract with an owner of such a mineral or working interest, or to a voluntary pooling agreement or a compulsory pooling order heretofore entered by the division.</p> <p><i>Jennifer Elrod</i> 11/07/2019 Signature Date</p> <p>JENNIFER ELROD Printed Name</p> <p>JELROD@CHISHOLMENERGY.COM E-mail Address</p> <p><b><sup>18</sup> SURVEYOR CERTIFICATION</b></p> <p>I hereby certify that the well location shown on this plat was plotted from field notes of actual surveys made by me or under my supervision, and that the same is true and correct to the best of my belief.</p> <p>SEPTEMBER 23, 2019 Date of Survey</p> <p><i>[Signature]</i> Signature and Seal of Professional Surveyor</p> <p>Certificate Number: KILIMON F. JARAMILLO, PLS 12797 SURVEY NO. 7514A</p>
--	--------------------------------------------------------------------------------------------------------------------------------------------------------------------------------------------------------------------------------------------------------------------------------------------------------------------------------------------------------------------------------------------------------------------------------------------------------------------------------------------------------------------------------------------------------------------------------------------------------------------------------------------------------------------------------------------------------------------------------------------------------------------------------------------------------------------------------------------------------------------------------------------------------------------------------------------------------------------------------------------------------------------------------------------------------------------------------------------------------------------------------------------------------------------------------------------------------



Intent ☒ As Drilled ☐

API # 30-015-44331		
Operator Name: <b>CHISHOLM ENERGY OPERATING, LLC</b>	Property Name: <b>DARK CANYON 15-22 WCA</b>	Well Number <b>7H</b>

Kick Off Point (KOP)

UL <b>B</b>	Section <b>15</b>	Township <b>23S</b>	Range <b>26E</b>	Lot	Feet <b>200</b>	From N/S <b>NORTH</b>	Feet <b>1505</b>	From E/W <b>EAST</b>	County <b>EDDY</b>
Latitude <b>32.3112935</b>					Longitude <b>104.2771188</b>				NAD <b>83</b>

First Take Point (FTP)

UL <b>A</b>	Section <b>15</b>	Township <b>23S</b>	Range <b>26E</b>	Lot	Feet <b>330</b>	From N/S <b>NORTH</b>	Feet <b>900</b>	From E/W <b>EAST</b>	County <b>EDDY</b>
Latitude <b>32.3109756</b>					Longitude <b>104.2751622</b>				NAD <b>83</b>

Last Take Point (LTP)

UL <b>H</b>	Section <b>22</b>	Township <b>23S</b>	Range <b>26E</b>	Lot	Feet <b>2254</b>	From N/S <b>NORTH</b>	Feet <b>900</b>	From E/W <b>EAST</b>	County <b>EDDY</b>
Latitude <b>32.2909225</b>					Longitude <b>104.2752282</b>				NAD <b>83</b>

Is this well the defining well for the Horizontal Spacing Unit? ☐ NO

Is this well an infill well? ☐ YES

If infill is yes please provide API if available, Operator Name and well number for Defining well for Horizontal Spacing Unit.

API # 30-015-44329		
Operator Name: CHISHOLM ENERGY OPERATING, LLC	Property Name: DARK CANYON 15-22 WCA STATE COM	Well Number 6H

KZ 06/29/2018

NOTE: LATITUDE AND LONGITUDE COORDINATES ARE SHOWN USING THE NORTH AMERICAN DATUM OF 1983 (NAD83). LISTED NEW MEXICO STATE PLANE EAST COORDINATES ARE GRID (NAD83). BASIS OF BEARING AND DISTANCES USED ARE NEW MEXICO STATE PLANE EAST COORDINATES MODIFIED TO THE SURFACE

