

District I
1625 N. French Dr., Hobbs, NM 88240
Phone: (575) 393-6161 Fax: (575) 393-0720
District II
811 S. First St., Artesia, NM 88210
Phone: (575) 748-1283 Fax: (575) 748-9720
District III
1000 Rio Brazos Road, Aztec, NM 87410
Phone: (505) 334-6178 Fax: (505) 334-6170
District IV
1220 S. St. Francis Dr., Santa Fe, NM 87505
Phone: (505) 476-3460 Fax: (505) 476-3462

State of New Mexico
Energy, Minerals & Natural Resources Department
OIL CONSERVATION DIVISION
1220 South St. Francis Dr.
Santa Fe, NM 87505

Form C-102
Revised August 1, 2011
Submit one copy to appropriate
District Office

☐ AMENDED REPORT

WELL LOCATION AND ACREAGE DEDICATION PLAT

¹ API Number	² Pool Code	³ Pool Name
⁴ Property Code	⁵ Property Name PARKWAY 16-17 STATE COM	⁶ Well Number 2H
⁷ OGRID No.	⁸ Operator Name CIMAREX ENERGY CO.	⁹ Elevation 3349.1'

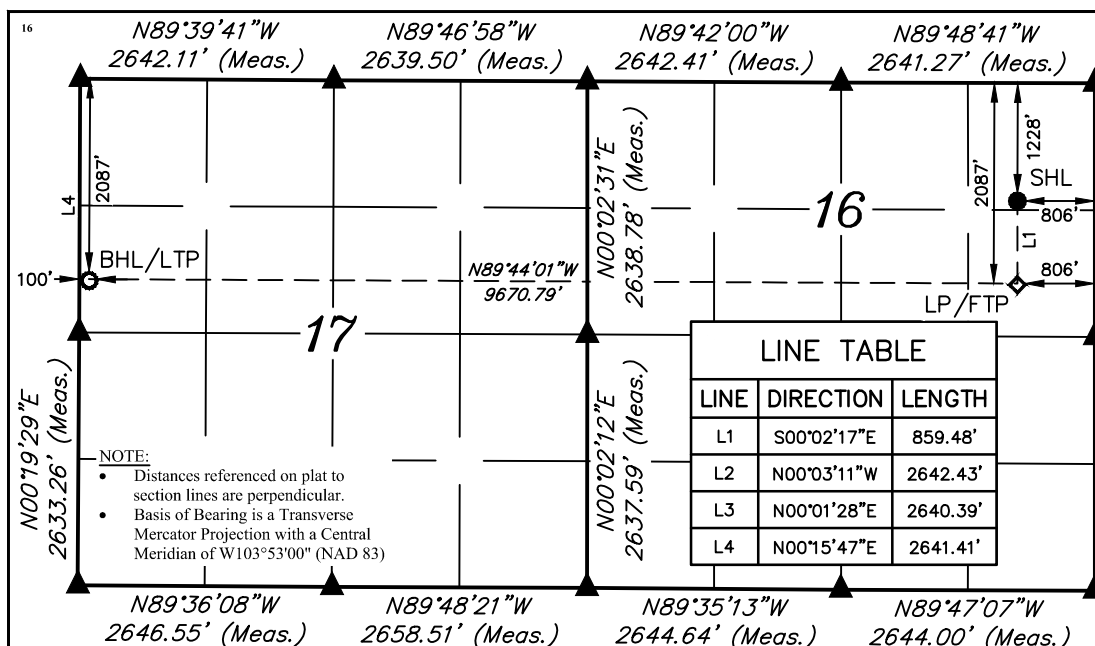
¹⁰ Surface Location

UL or lot no. A	Section 16	Township 19S	Range 29E	Lot Idn	Feet from the 1228	North/South line NORTH	Feet from the 806	East/West line EAST	County EDDY
--------------------	---------------	-----------------	--------------	---------	-----------------------	---------------------------	----------------------	------------------------	----------------

¹¹ Bottom Hole Location If Different From Surface

UL or lot no. E	Section 17	Township 19S	Range 29E	Lot Idn	Feet from the 2087	North/South line NORTH	Feet from the 100	East/West line WEST	County EDDY
¹² Dedicated Acres	¹³ Joint or Infill	¹⁴ Consolidation Code	¹⁵ Order No.						

No allowable will be assigned to this completion until all interests have been consolidated or a non-standard unit has been approved by the division.



NAD 83 (SURFACE HOLE LOCATION)
LATITUDE = 32°39'52.87" (32.664687°)
LONGITUDE = 104°04'25.78" (104.073828°)
NAD 27 (SURFACE HOLE LOCATION)
LATITUDE = 32°39'52.45" (32.664570°)
LONGITUDE = 104°04'23.96" (104.073321°)
STATE PLANE NAD 83 (N.M. EAST)
N: 605641.86' E: 621195.54'
STATE PLANE NAD 27 (N.M. EAST)
N: 605579.53' E: 580015.83'

NAD 83 (LP/FTP)
LATITUDE = 32°39'44.37" (32.662325°)
LONGITUDE = 104°04'25.75" (104.073821°)
NAD 27 (LP/FTP)
LATITUDE = 32°39'43.95" (32.662208°)
LONGITUDE = 104°04'23.93" (104.073314°)
STATE PLANE NAD 83 (N.M. EAST)
N: 604782.58' E: 621199.75'
STATE PLANE NAD 27 (N.M. EAST)
N: 604720.26' E: 580020.02'

NAD 83 (BHL/LTP)
LATITUDE = 32°39'44.63" (32.662397°)
LONGITUDE = 104°06'18.86" (104.105239°)
NAD 27 (BHL/LTP)
LATITUDE = 32°39'44.21" (32.662280°)
LONGITUDE = 104°06'17.03" (104.104731°)
STATE PLANE NAD 83 (N.M. EAST)
N: 604786.54' E: 611531.09'
STATE PLANE NAD 27 (N.M. EAST)
N: 604724.29' E: 570351.37'

- = SURFACE HOLE LOCATION
- ◆ = LANDING POINT/FIRST TAKE POINT
- = BOTTOM HOLE LOCATION/ LAST TAKE POINT
- ▲ = SECTION CORNER LOCATED



SCALE
DRAWN BY: C.M.T. 11-30-18
REV:2 03-05-20 S.T.O. (WELLBORE CHANGE)

¹⁷ OPERATOR
CERTIFICATION

I hereby certify that the information contained herein is true and complete to the best of my knowledge and belief, and that this organization either owns a working interest or unleased mineral interest in the land including the proposed bottom hole location or has a right to drill this well at this location pursuant to a contract with an owner of such a mineral or working interest, or to a voluntary pooling agreement or a compulsory pooling order heretofore entered by the division.

Signature _____ Date _____

Printed Name _____

E-mail Address _____

¹⁸ SURVEYOR
CERTIFICATION

I hereby certify that the well location shown on this plat was plotted from field notes of actual surveys made by me or under my supervision, and that the same is true and correct to the best of my belief.

November 21, 2018

Date of Survey
Signature and Seal of Professional Surveyor:



Certificate Number: