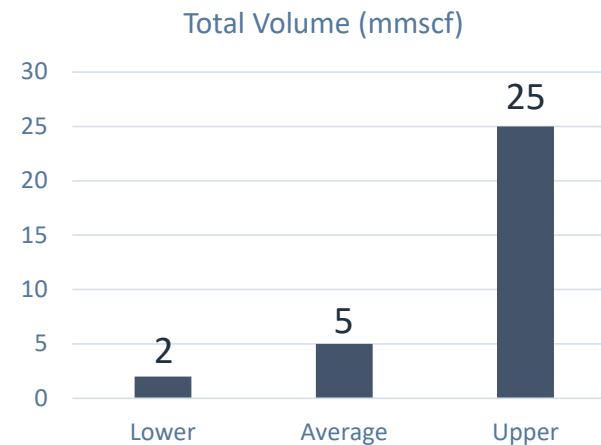
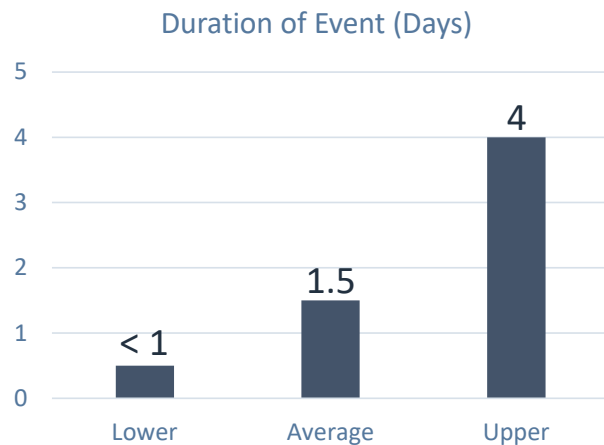


Anticipated Injection

While market interruptions are unpredictable, analysis of past interruptions suggest the following rates, durations, and volumes associated with market interruptions at a single compressor station:



Percent of days with flaring due to market interruptions: < 5%

Upper instantaneous rate: 20 mmscfd

Key Geologic Inputs for Reservoir Models
Based on log response and history matches to wells' production and pressure

Parameter	Range
Permeability, md	0.0006 – 0.08
Porosity, pu	0.05 – 0.07

Drafted at the direction of counsel

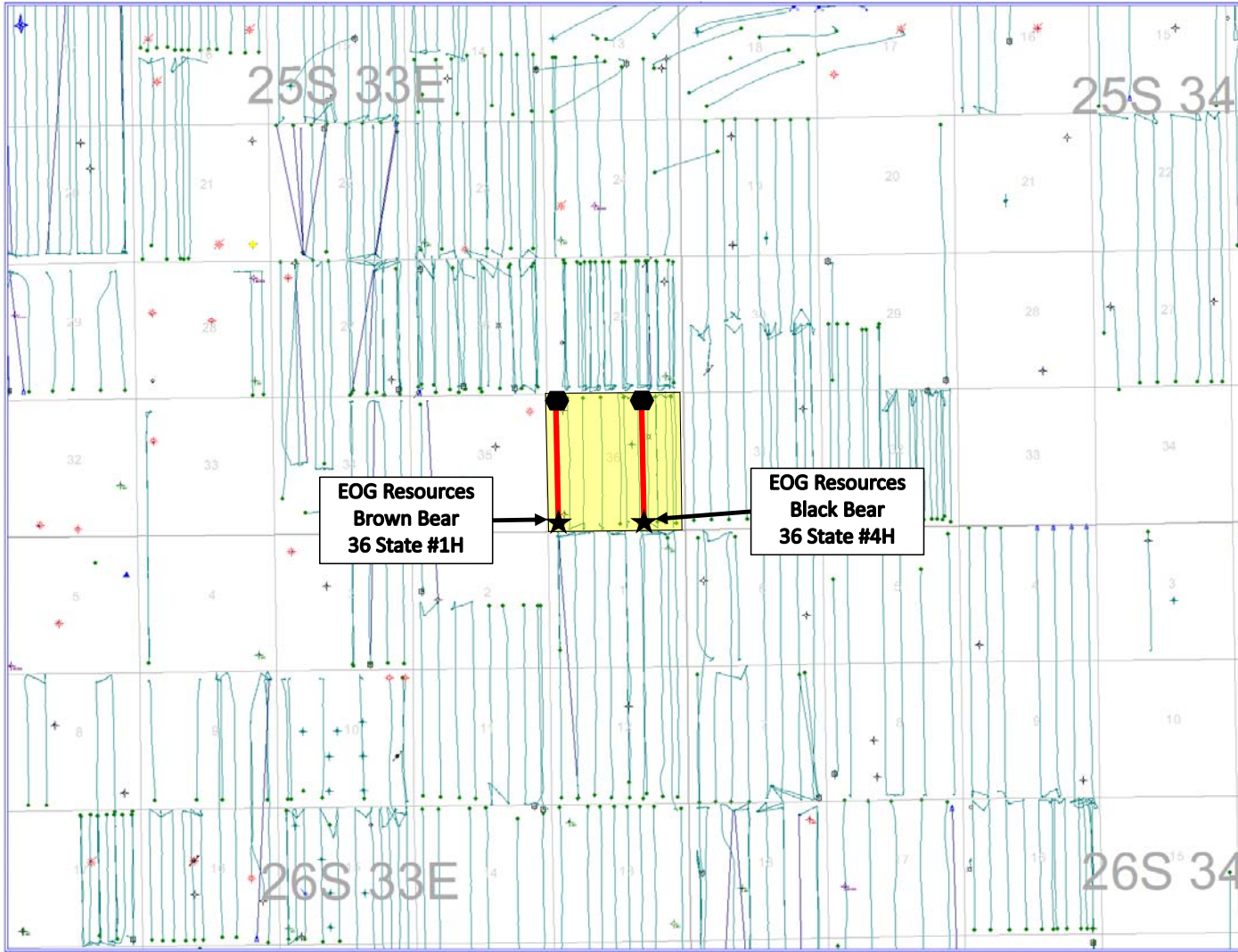
BEFORE THE OIL CONSERVATION DIVISION

Santa Fe, New Mexico




Submitted by: **EOG Resources, Inc.**

Hearing Date: January, 2021

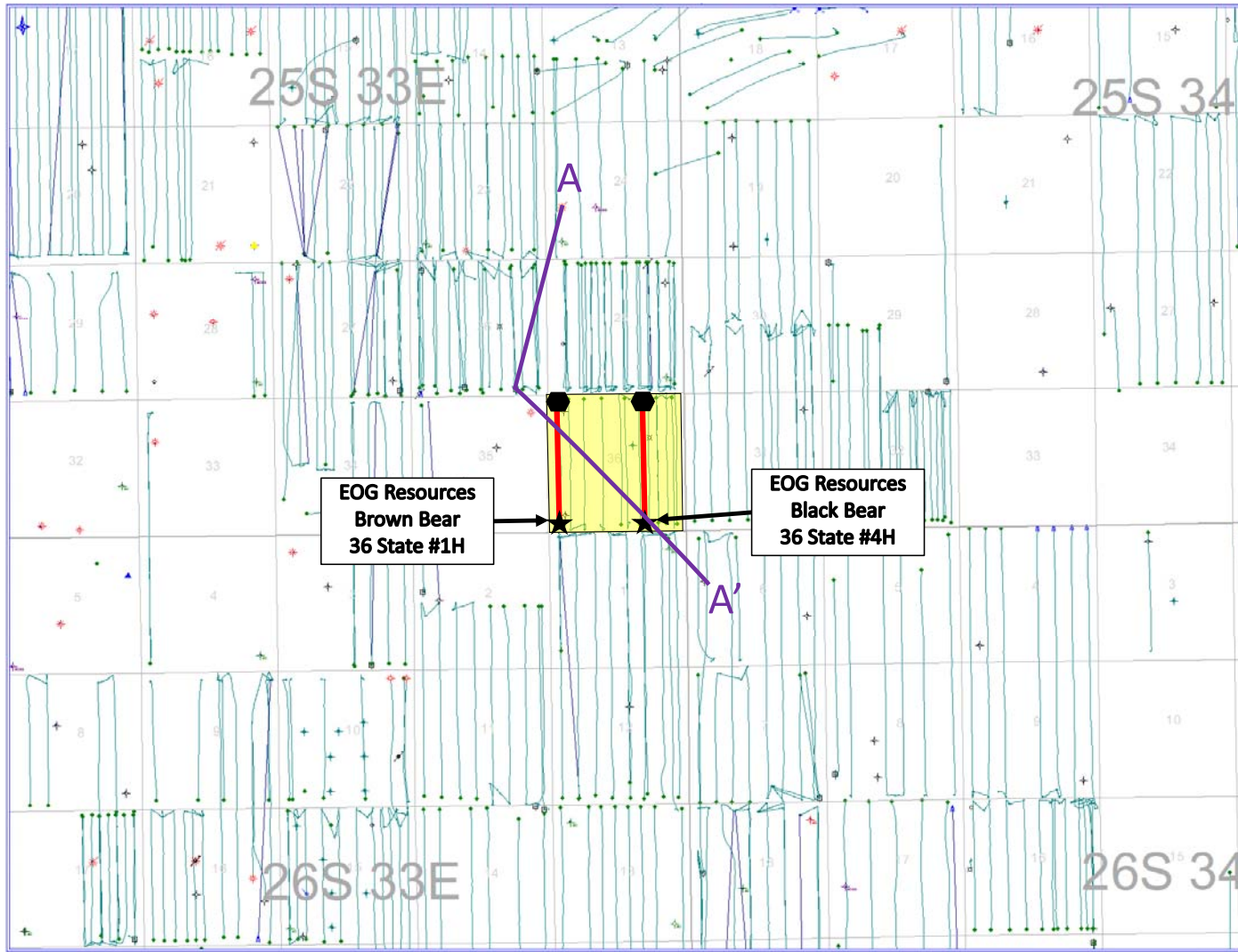
Brown Bear/Black Bear Area Lease Map






Map Legend

- SHL  EOG Resources -- Horizontal Well Locations (Brown Bear/Black Bear)
- BHL 
-  EOG Acreage

Brown Bear/Black Bear Area Lease Map



Map Legend

- SHL  EOG Resources -- Horizontal Well Locations (Brown Bear/Black Bear)
- BHL 
-  EOG Acreage

Brown Bear/Black Bear Area Cross Section

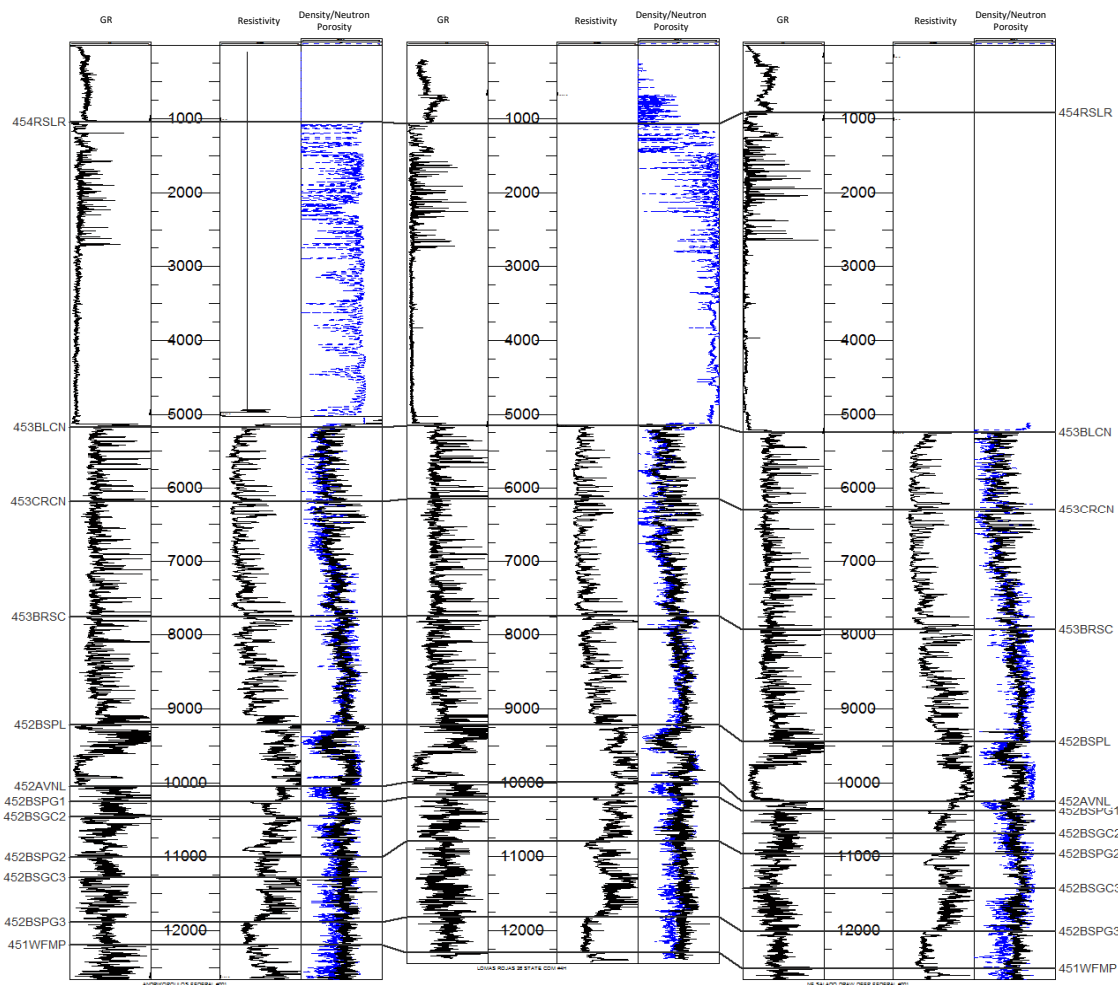
A
North

ANDRIKOPOULOS FEDERAL #001
30025264380000
ELEV_KB : 3,354

LOMAS ROJAS 26 STATE COM #4H
30025397030000
ELEV_KB : 3,359

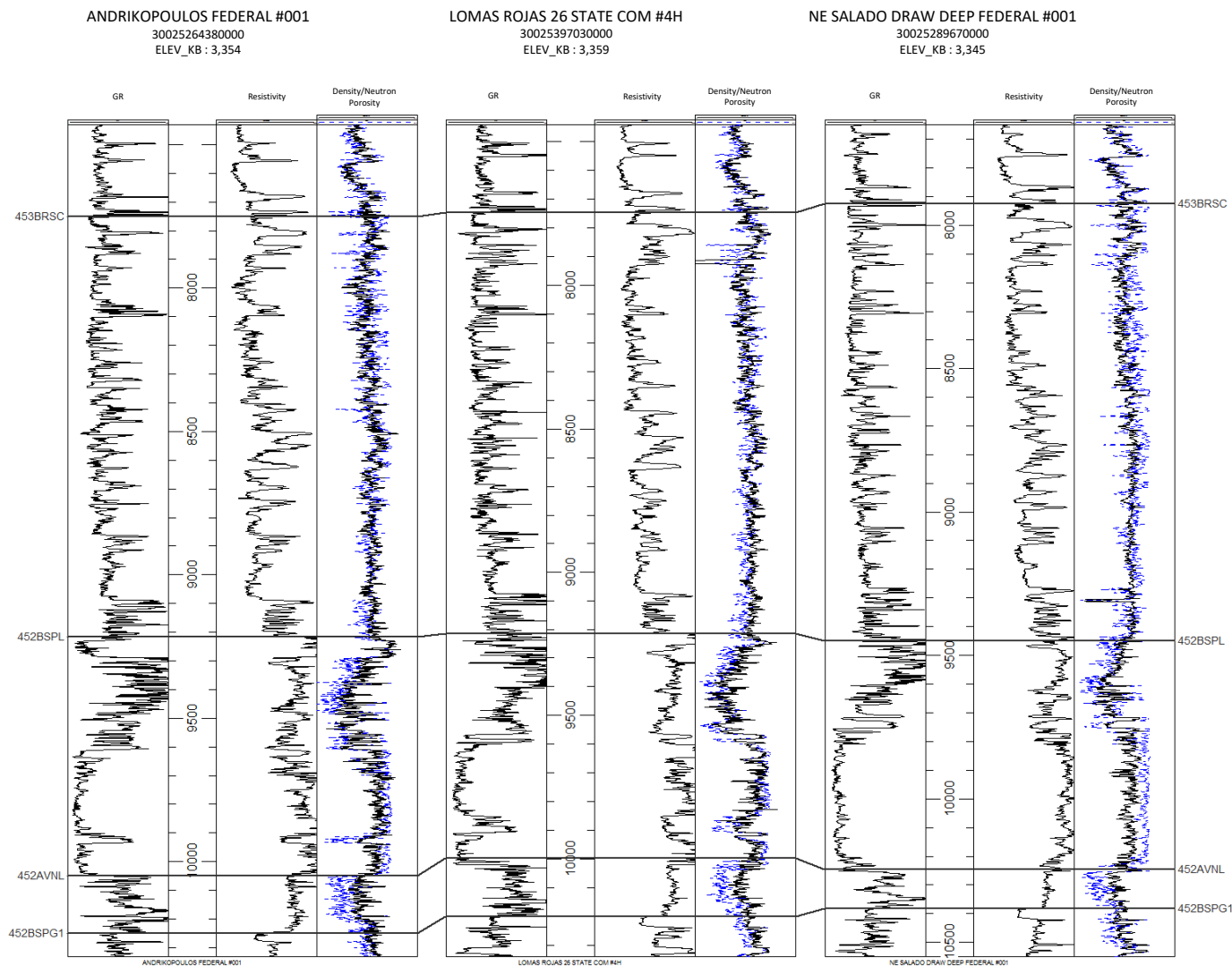
NE SALADO DRAW DEEP FEDERAL #001
30025289670000
ELEV_KB : 3,345

A'
South



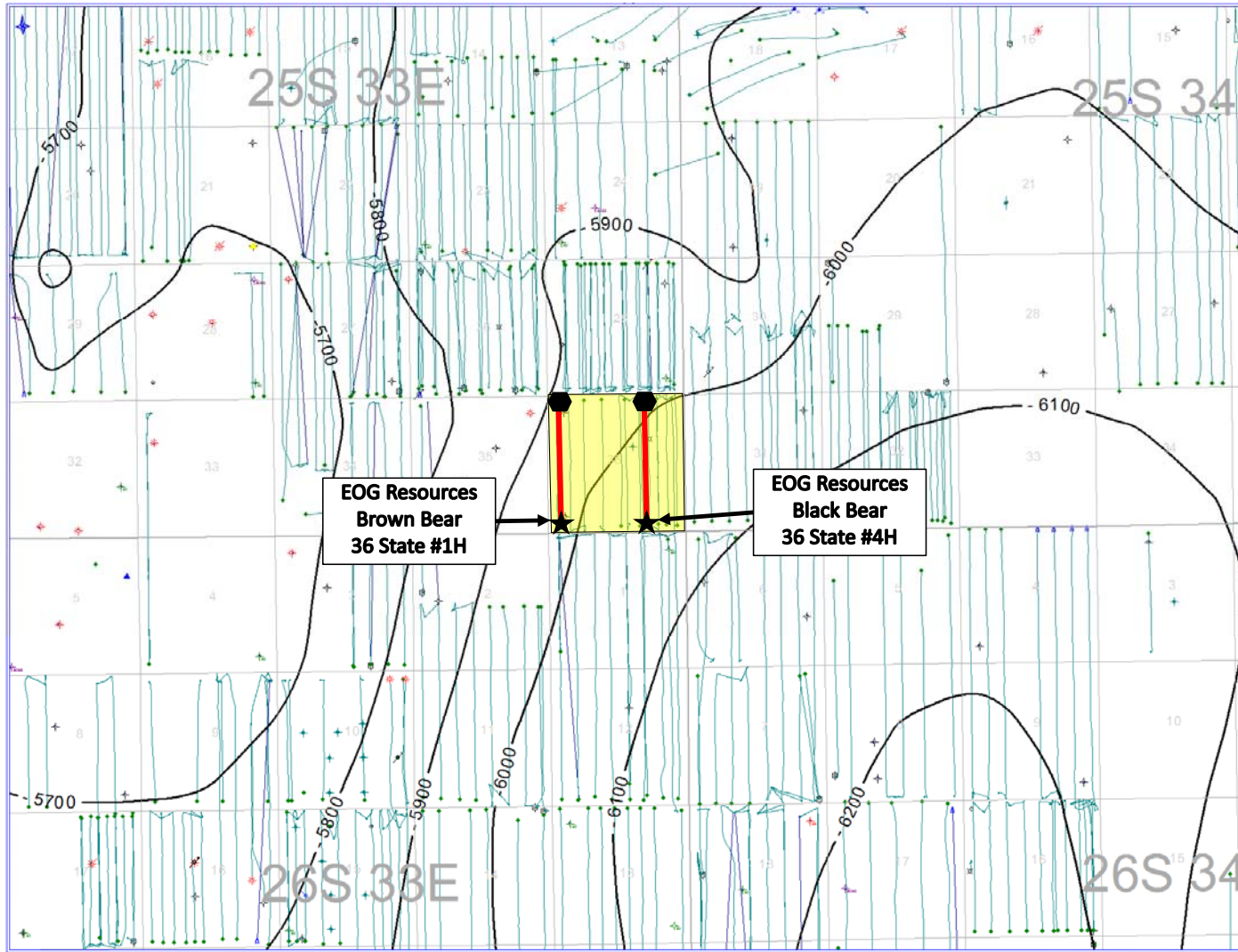
Brown Bear/Black Bear Area Cross Section

A
North






A'
South

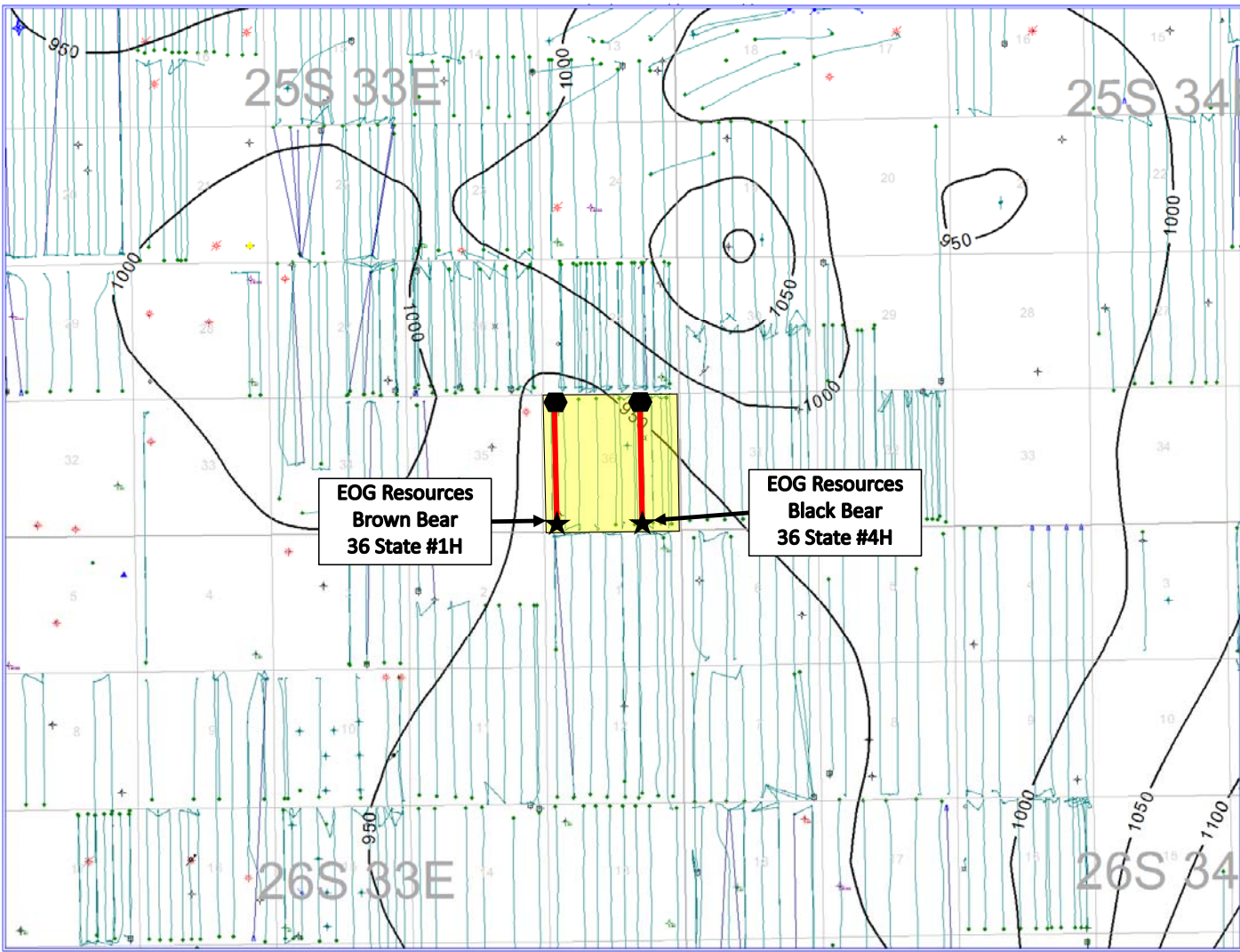
Brown Bear/Black Bear Area Structure with Top Bone Spring Lime (SSTVD)






Map Legend

- SHL 
- EOG Resources --
Horizontal Well Locations
(Brown Bear/Black Bear)
- BHL 
-  EOG Acreage

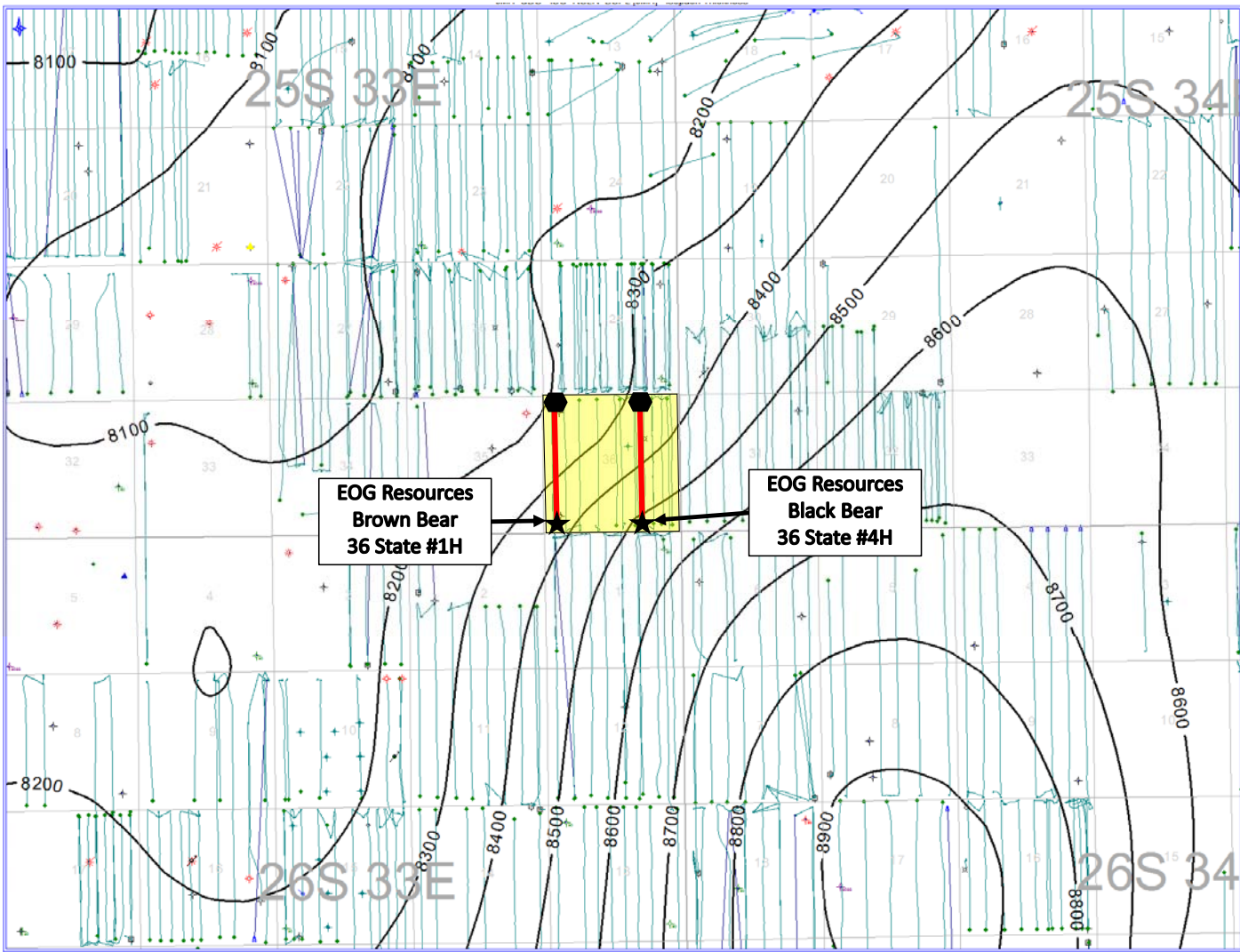
Brown Bear/Black Bear Area Isopach with Top Bone Spring Lime to Top First Bone






Map Legend

- SHL  EOG Resources -- Horizontal Well Locations (Brown Bear/Black Bear)
- BHL 
-  EOG Acreage

Brown Bear/Black Bear Area Isopach with Top Rustler to Top Bone Spring Lime



Map Legend

- SHL  EOG Resources -- Horizontal Well Locations (Brown Bear/Black Bear)
- BHL 
-  EOG Acreage

Brown Bear/Black Bear Area Cross Section

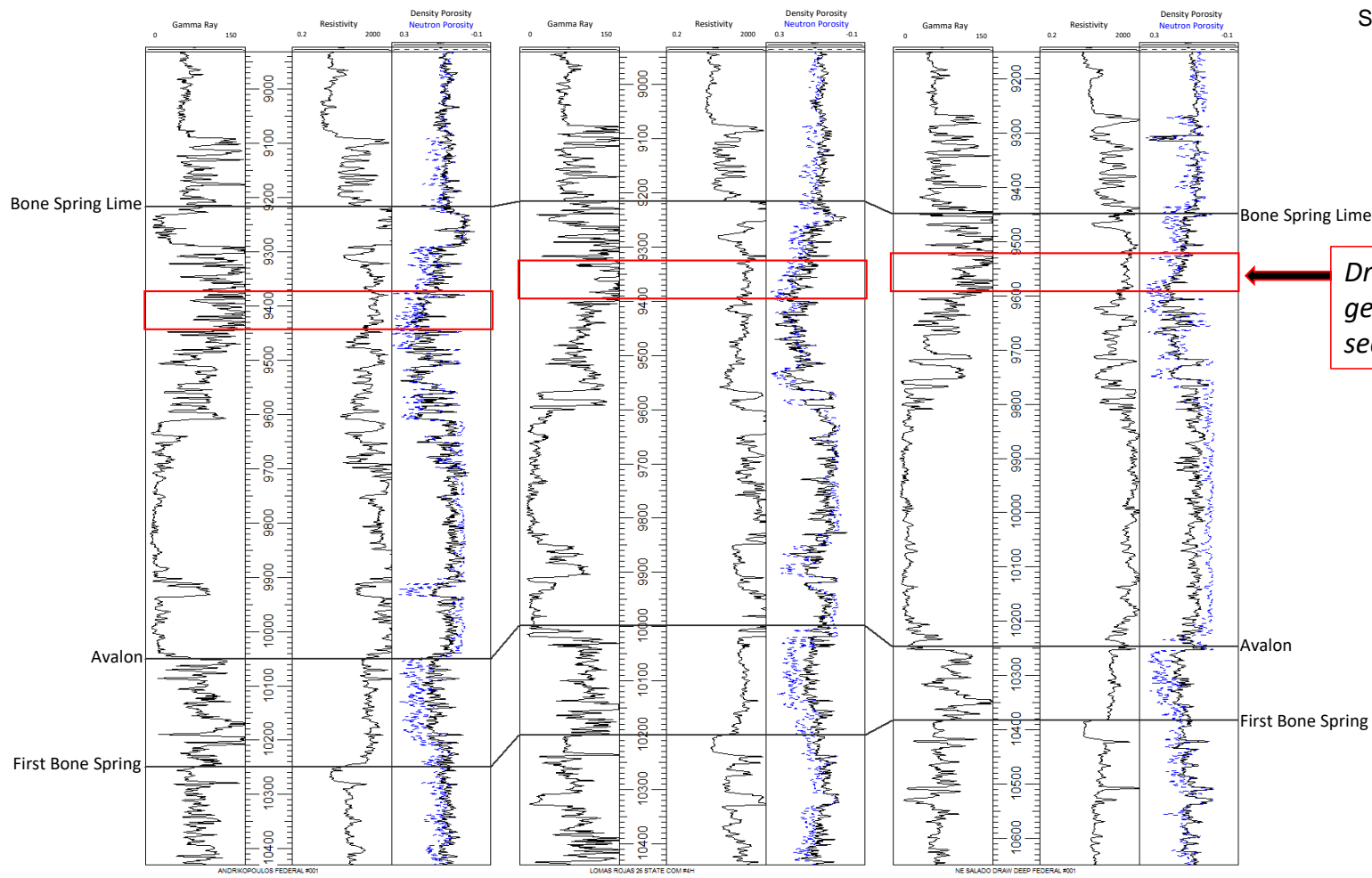
A
North

ANDRIKOPOULOS FEDERAL #001
30025264380000
ELEV_KB : 3,354

LOMAS ROJAS 26 STATE COM #4H
30025397030000
ELEV_KB : 3,359

NE SALADO DRAW DEEP FEDERAL #001
30025289670000
ELEV_KB : 3,345

A'
South



Drilling window with
geologically equivalent
section across wells

Drafted at the direction of counsel

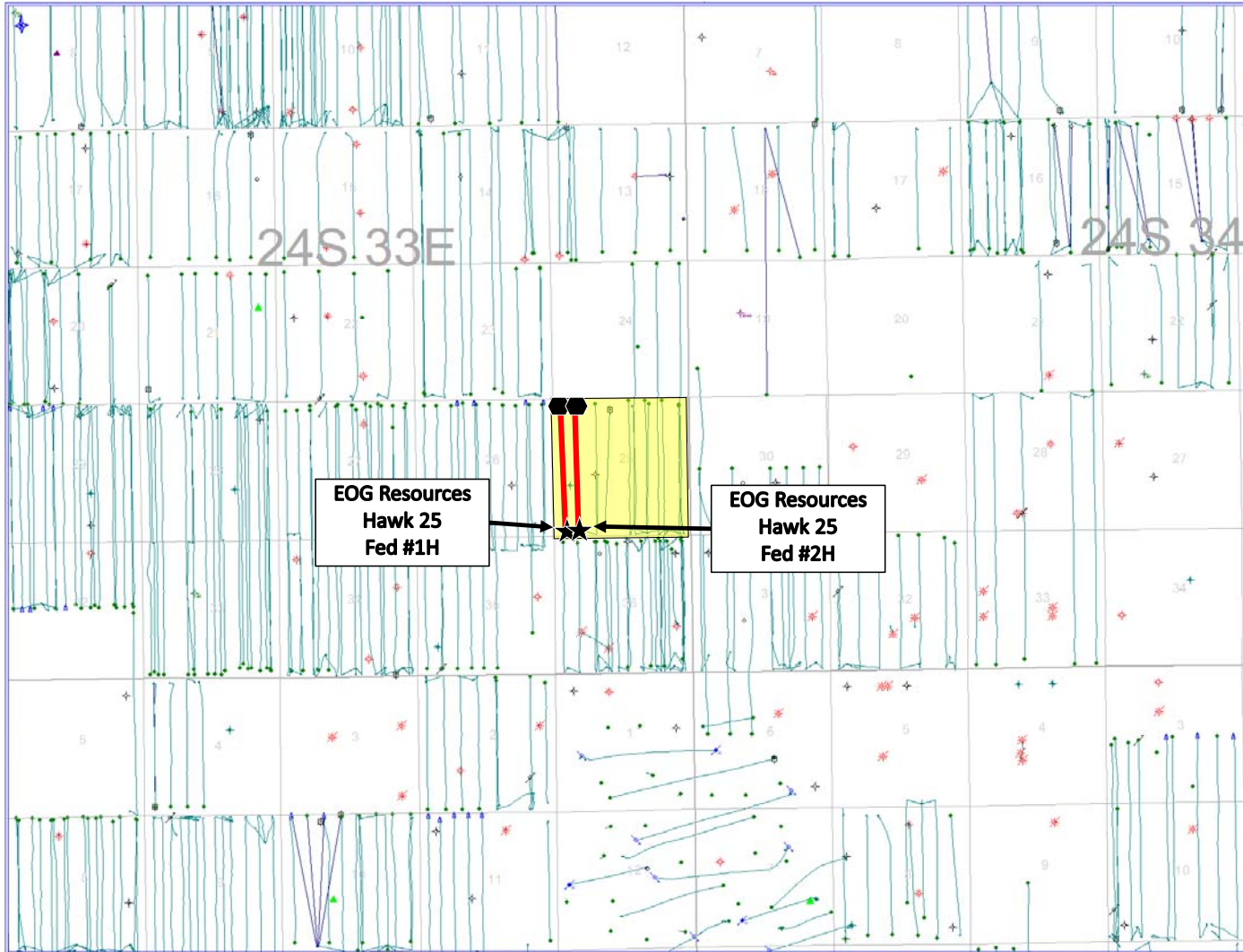
BEFORE THE OIL CONSERVATION DIVISION

Santa Fe, New Mexico



Submitted by: **EOG Resources, Inc.**

Hearing Date: January, 2021

Hawk Area Lease Map



Map Legend

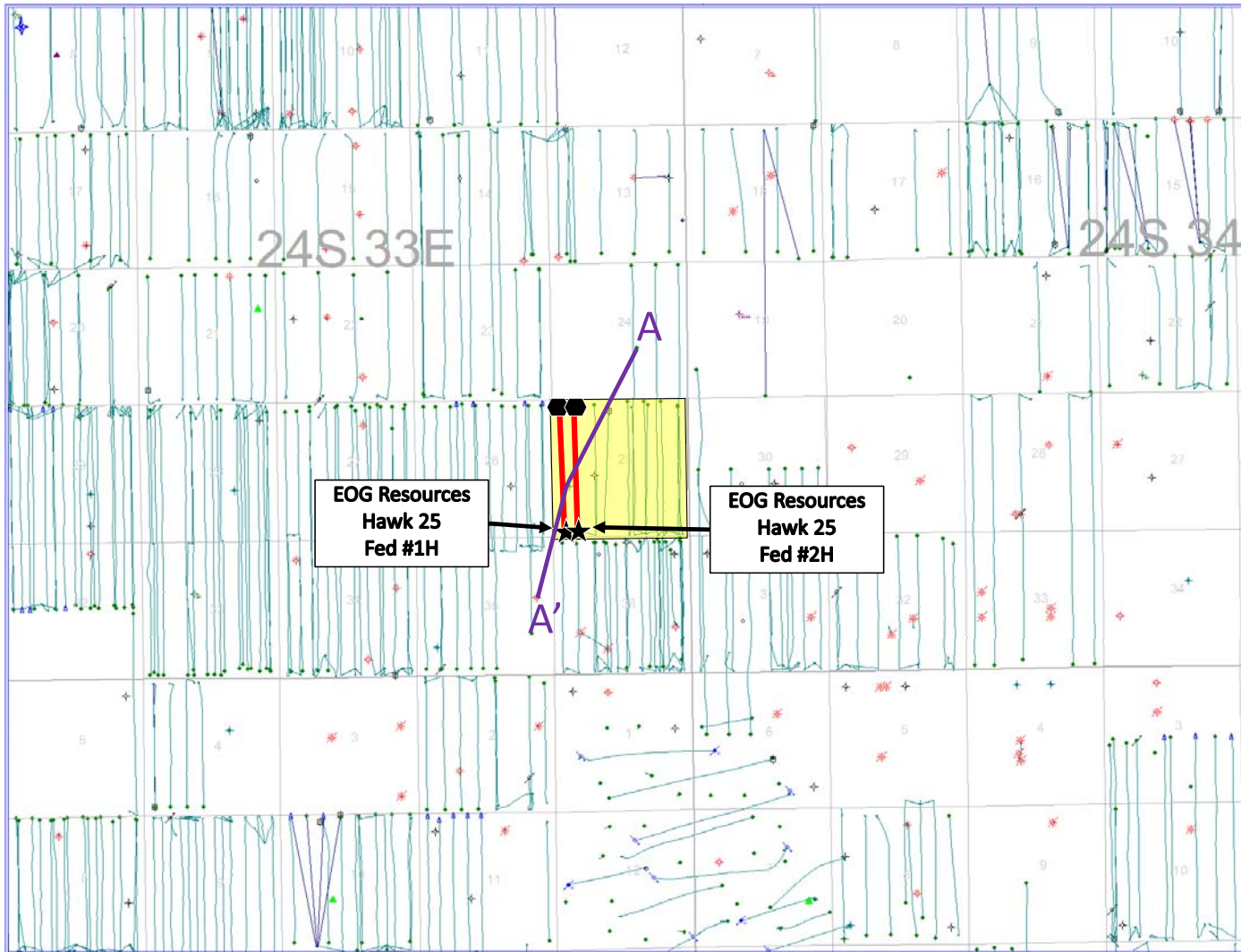
SHL 
BHL 

EOG Resources --
Horizontal Well Locations
(Hawk 25 Fed #1-2H)

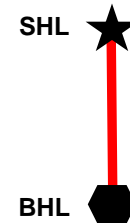


EOG Acreage

Hawk Area Lease Map



Map Legend



EOG Resources --
Horizontal Well Locations
(Hawk 25 Fed #1-2H)



EOG Acreage

Hawk Area Cross Section

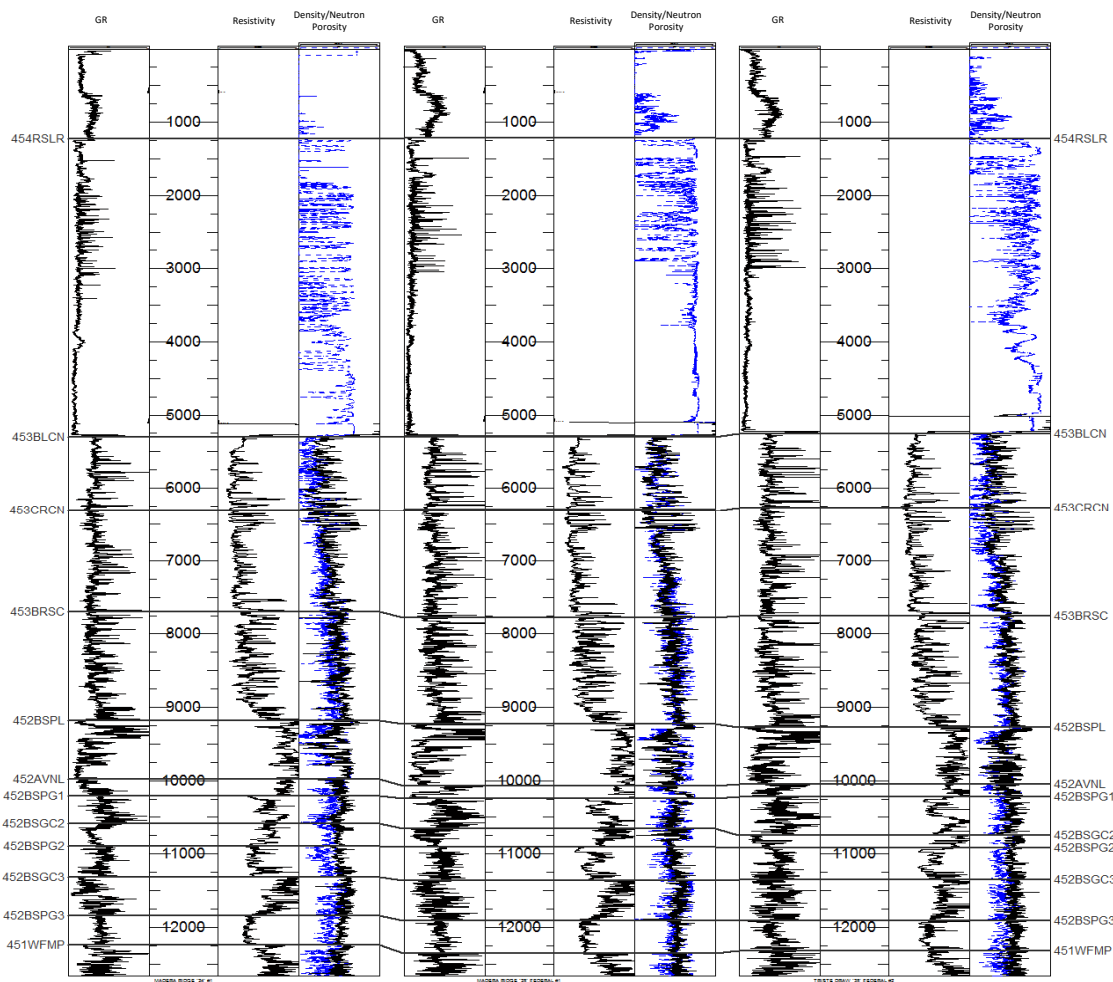
A
North

MADERA RIDGE '24' #1
30025290080000
ELEV_KB : 3,597

MADERA RIDGE '25' FEDERAL #1
30025285330000
ELEV_KB : 3,577

TRISTE DRAW '35' FEDERAL
30025347000000
ELEV_KB : 3,533

A'
South



Hawk Area Cross Section

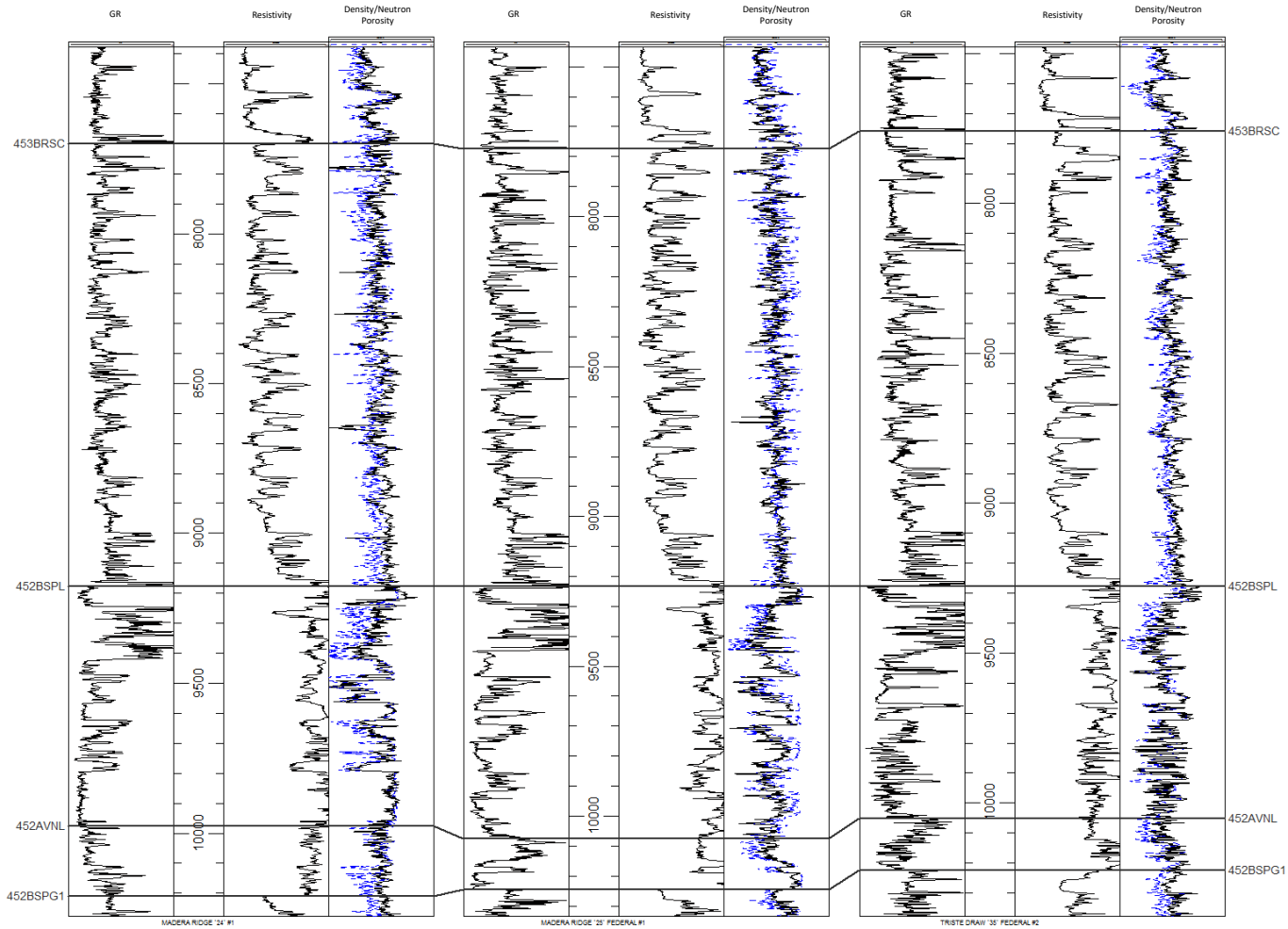
A
North

MADERA RIDGE '24' #1
30025290080000
ELEV_KB : 3,597

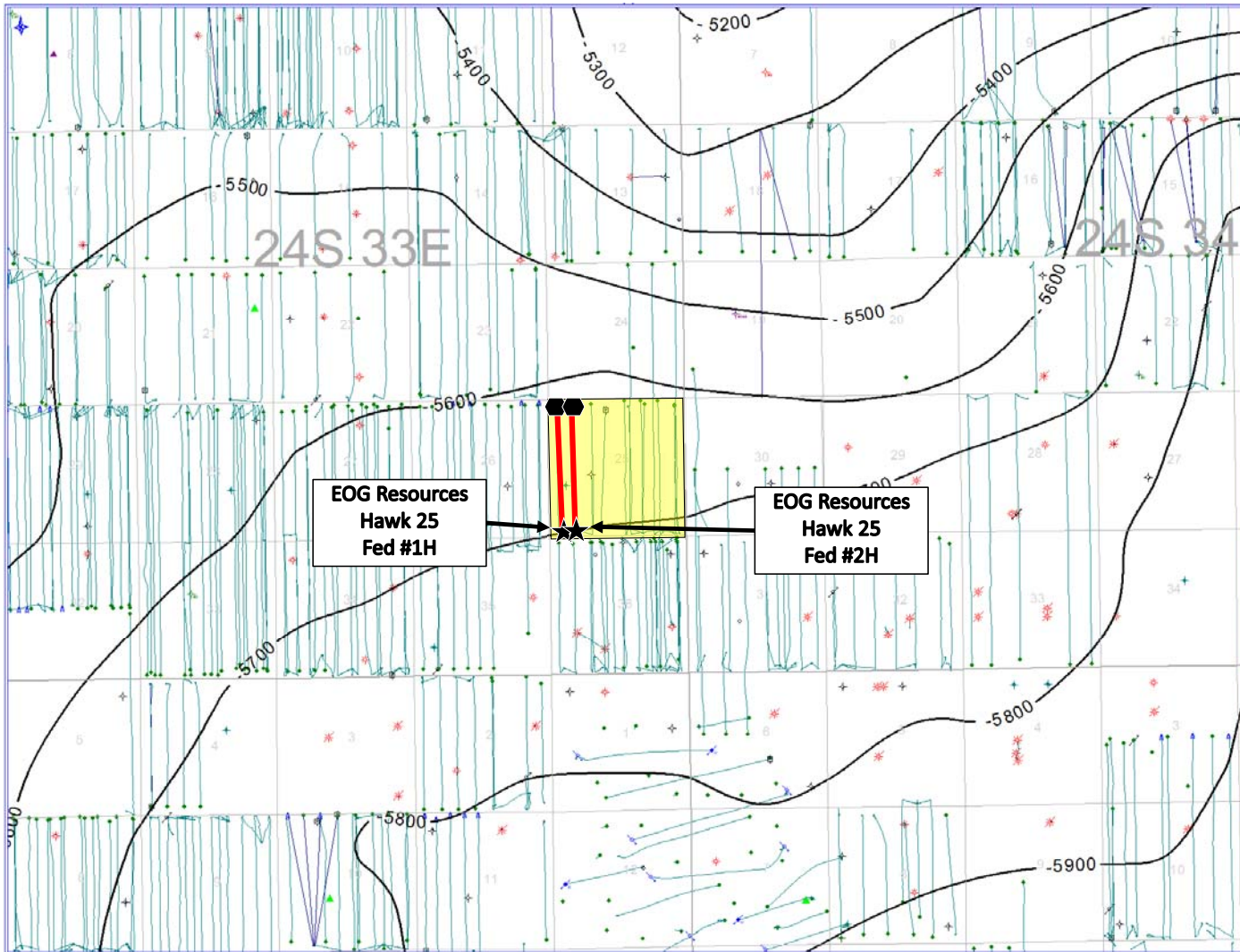
MADERA RIDGE '25' FEDERAL #1
30025285330000
ELEV_KB : 3,577

TRISTE DRAW '35' FEDERAL
30025347000000
ELEV_KB : 3,533

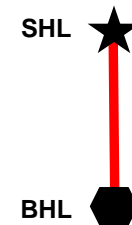
A'
South



Hawk Area Structure with Top Bone Spring Lime (SSTVD)



Map Legend

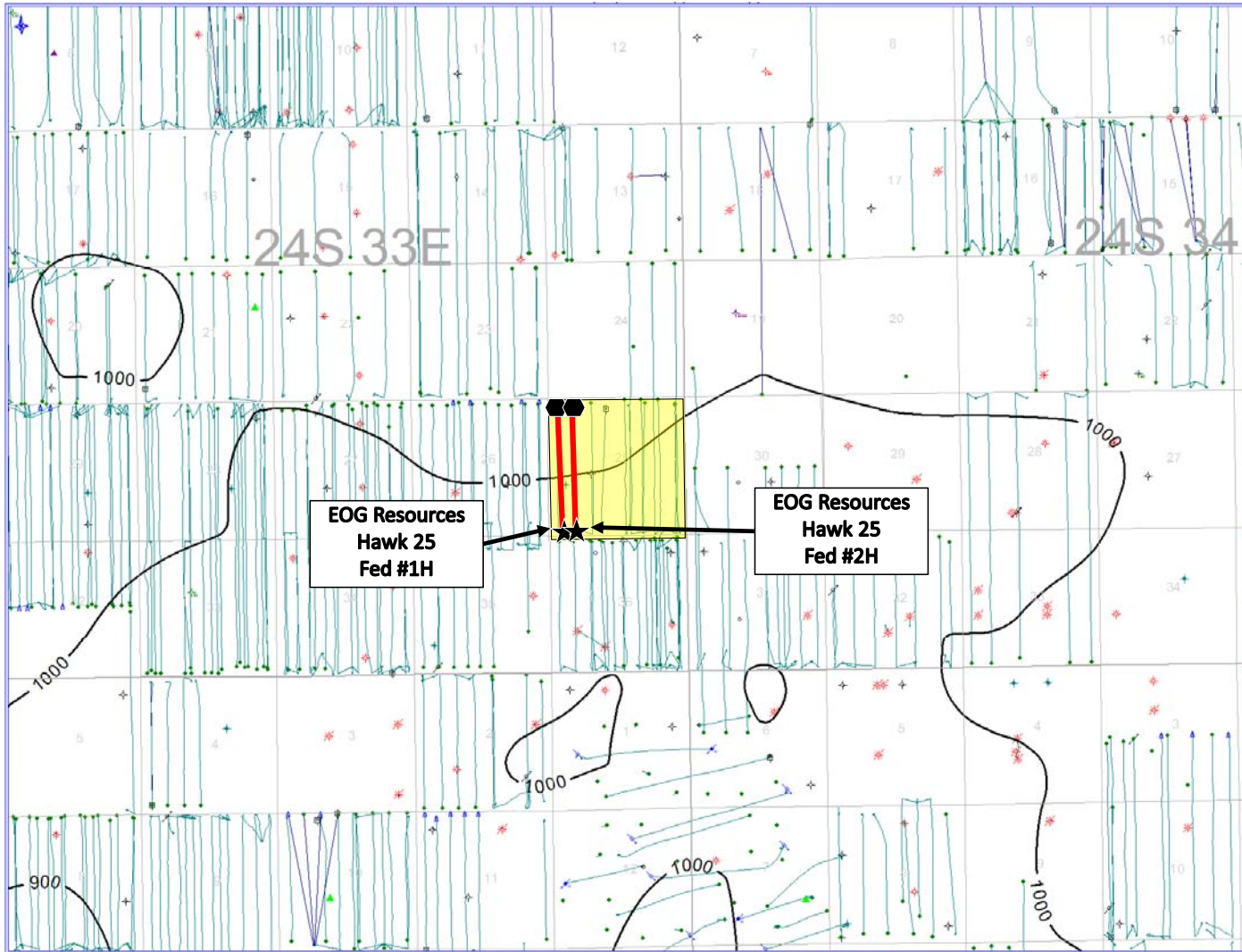


EOG Resources --
Horizontal Well Locations
(Hawk 25 Fed #1-2H)






EOG Acreage

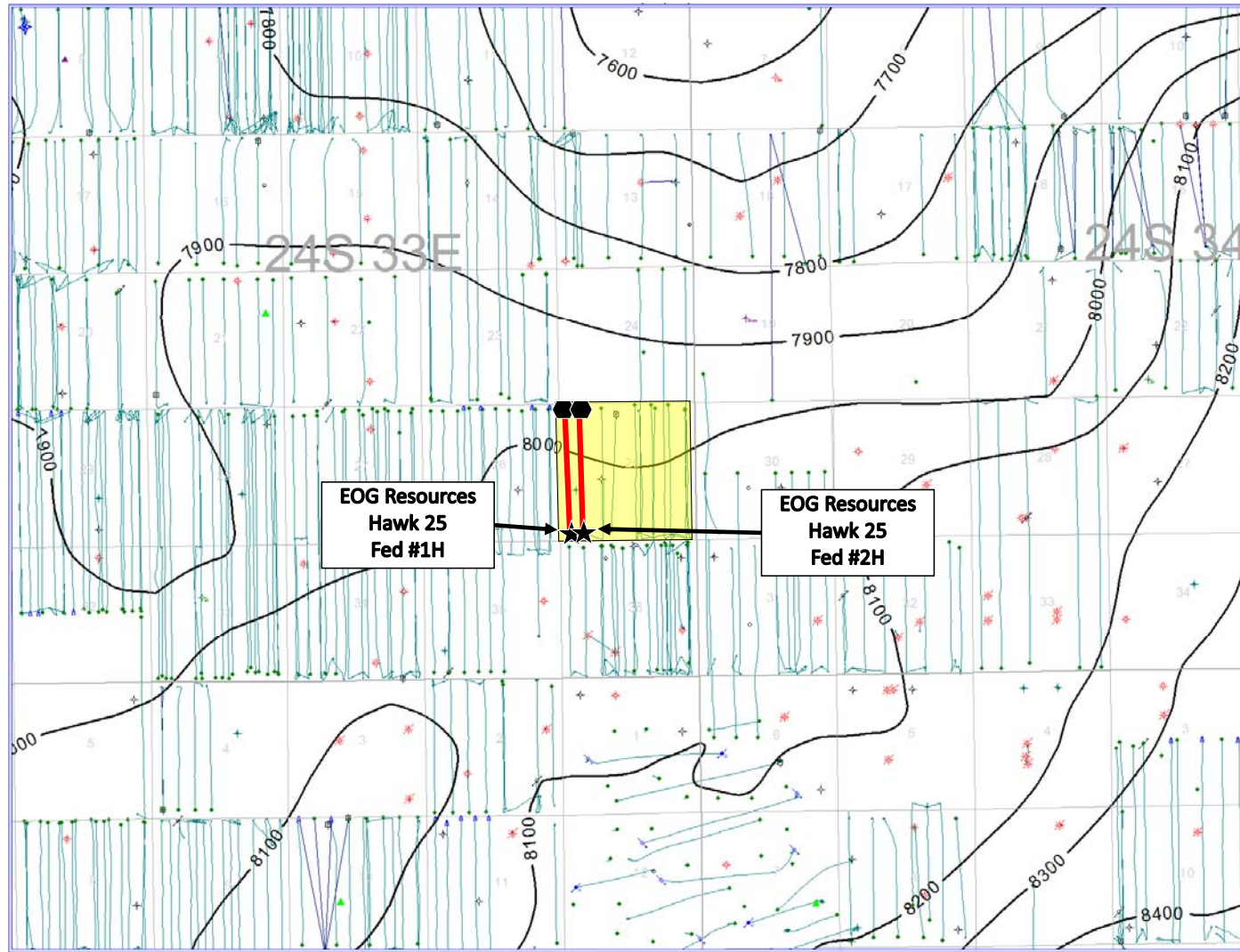
Hawk Area Isopach with Top Bone Spring Lime to Top First Bone



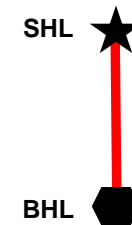
Map Legend

- SHL  EOG Resources -- Horizontal Well Locations (Hawk 25 Fed #1-2H)
- BHL 
-  EOG Acreage

Hawk Area Isopach with Top Rustler to Top Bone Spring Lime



Map Legend



EOG Resources --
Horizontal Well Locations
(Hawk 25 Fed #1-2H)



EOG Acreage

Hawk Area Cross Section

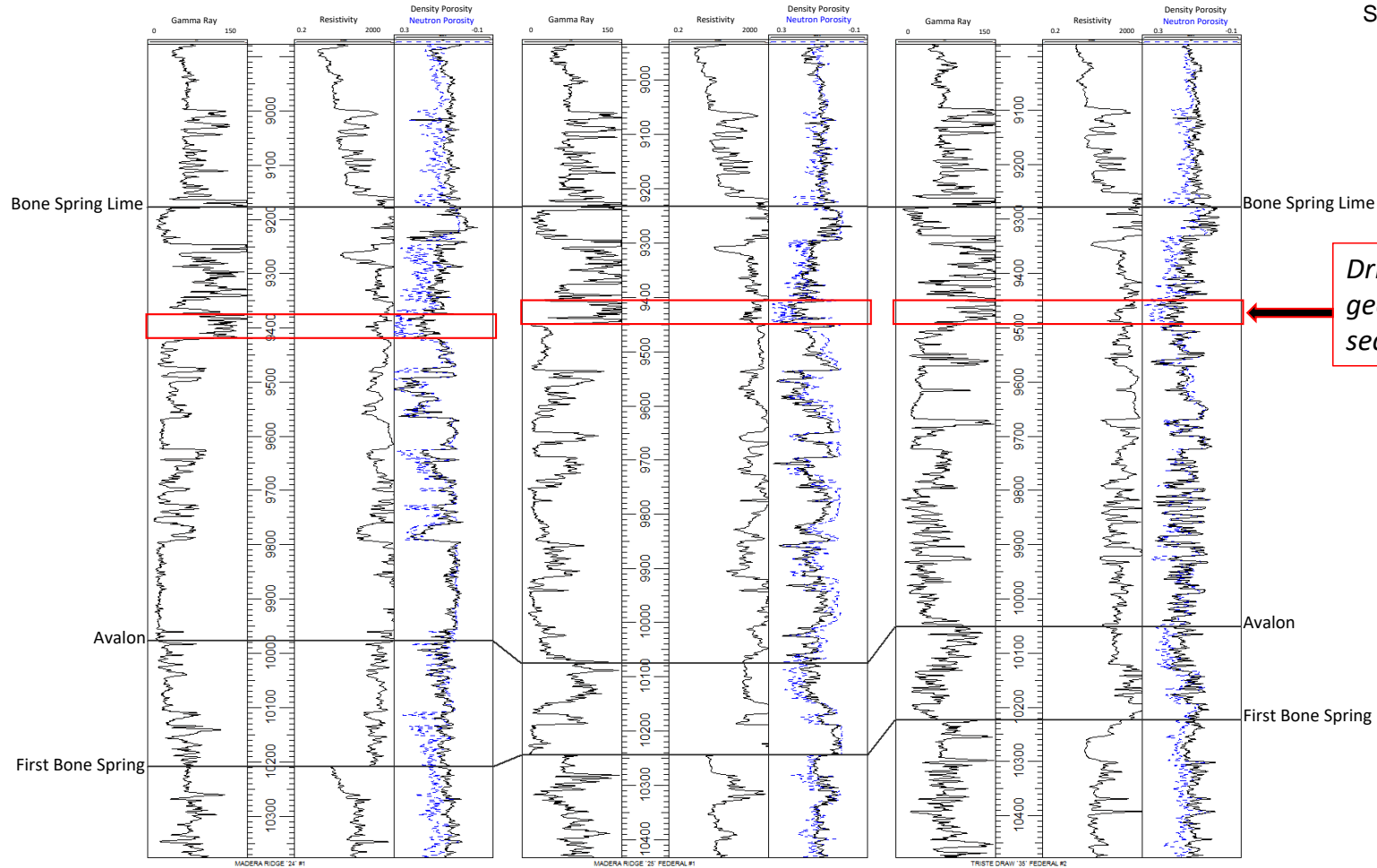
A
North

MADERA RIDGE '24' #1
30025290080000
ELEV_KB : 3,597

MADERA RIDGE '25' FEDERAL #1
30025285330000
ELEV_KB : 3,577

TRISTE DRAW '35' FEDERAL
30025347000000
ELEV_KB : 3,533

A'
South



Drilling window with geologically equivalent section across wells

Drafted at the direction of counsel

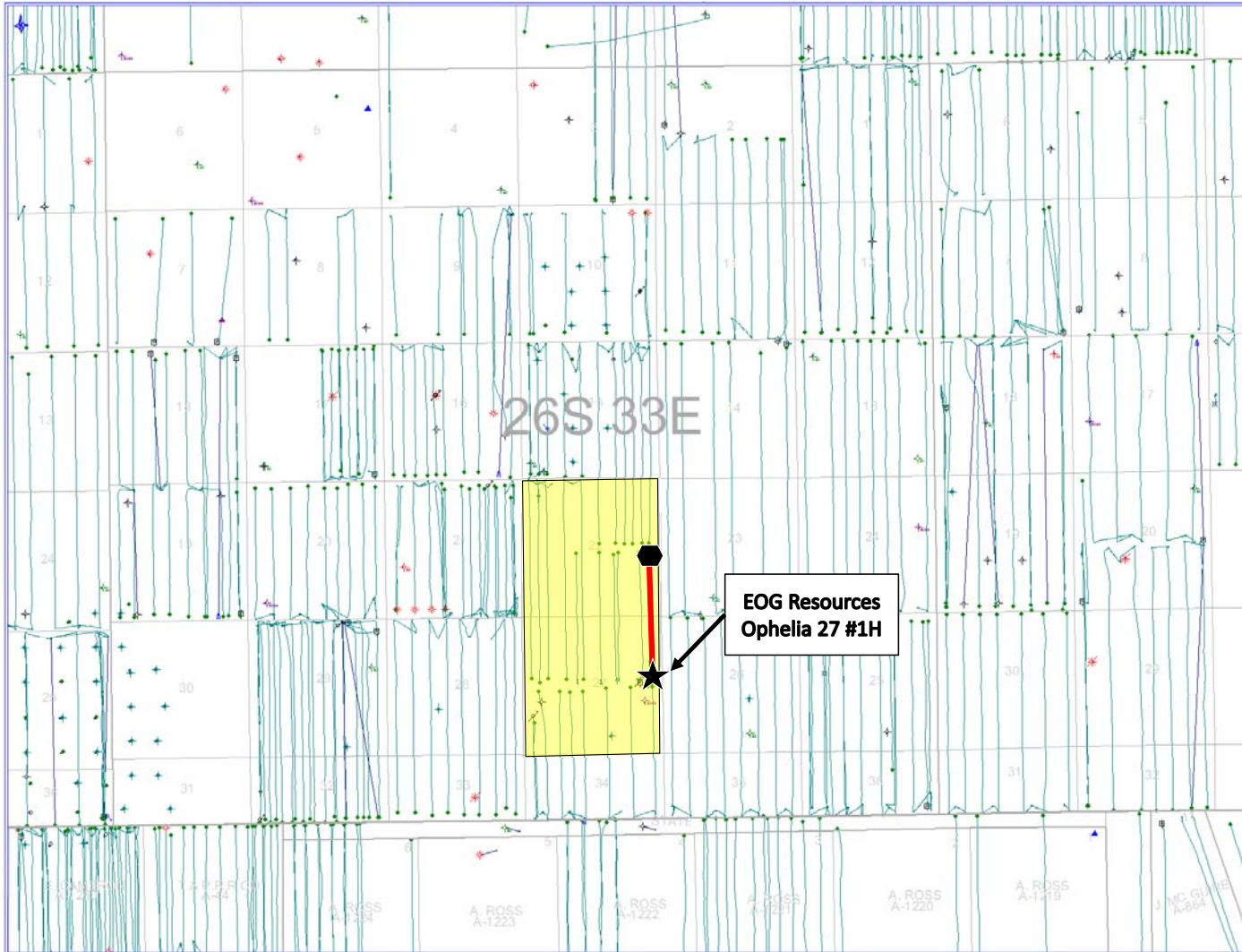
BEFORE THE OIL CONSERVATION DIVISION

Santa Fe, New Mexico

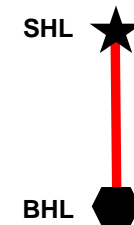
Submitted by: **EOG Resources, Inc.**

Hearing Date: January, 2021

Ophelia Area Lease Map



Map Legend

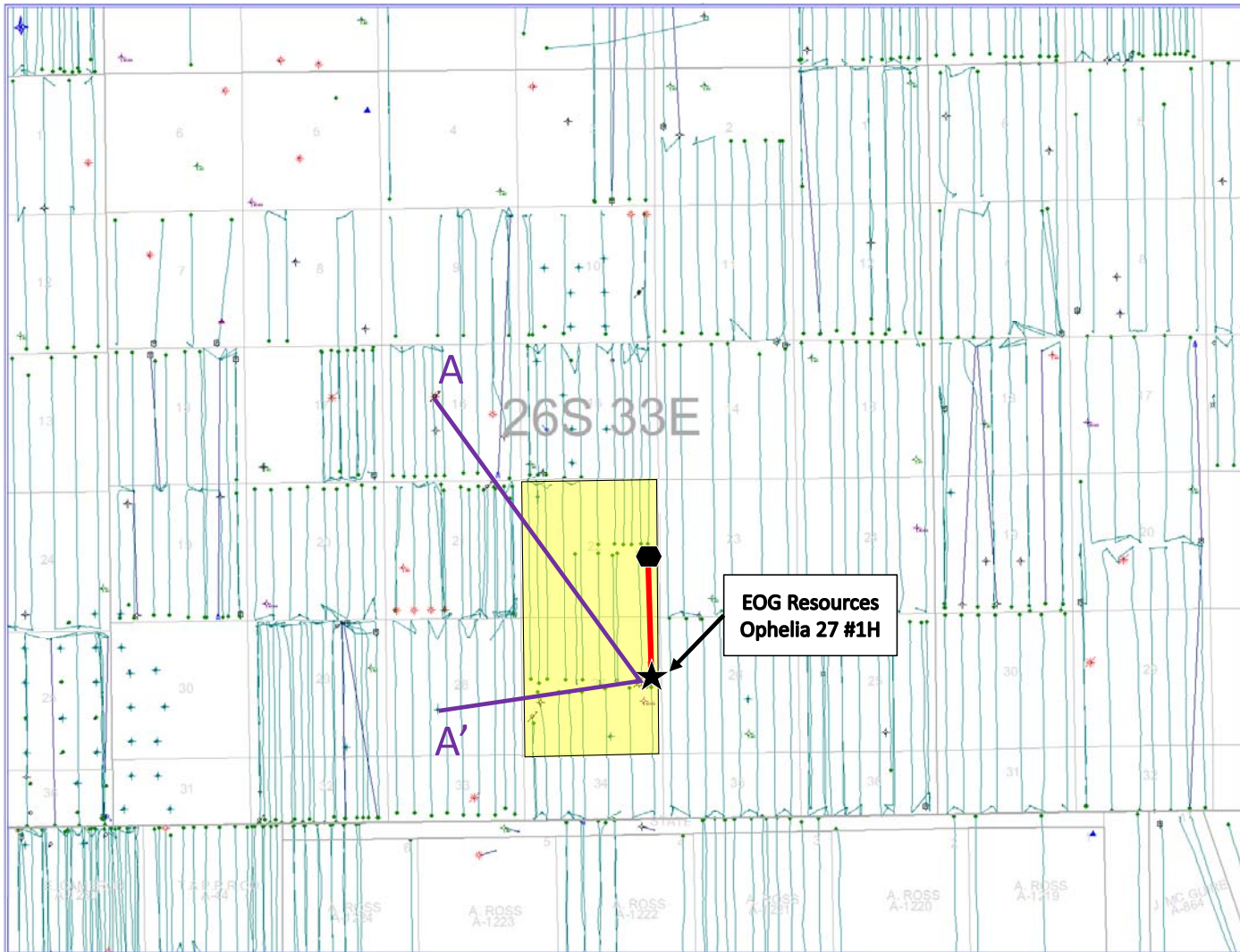


EOG Resources --
Horizontal Well Location
(Ophelia 27 #1H)

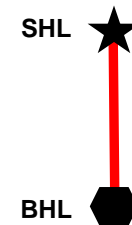


EOG Acreage

Ophelia Area Lease Map



Map Legend



EOG Resources --
Horizontal Well Location
(Ophelia 27 #1H)



EOG Acreage

Ophelia Area Cross Section

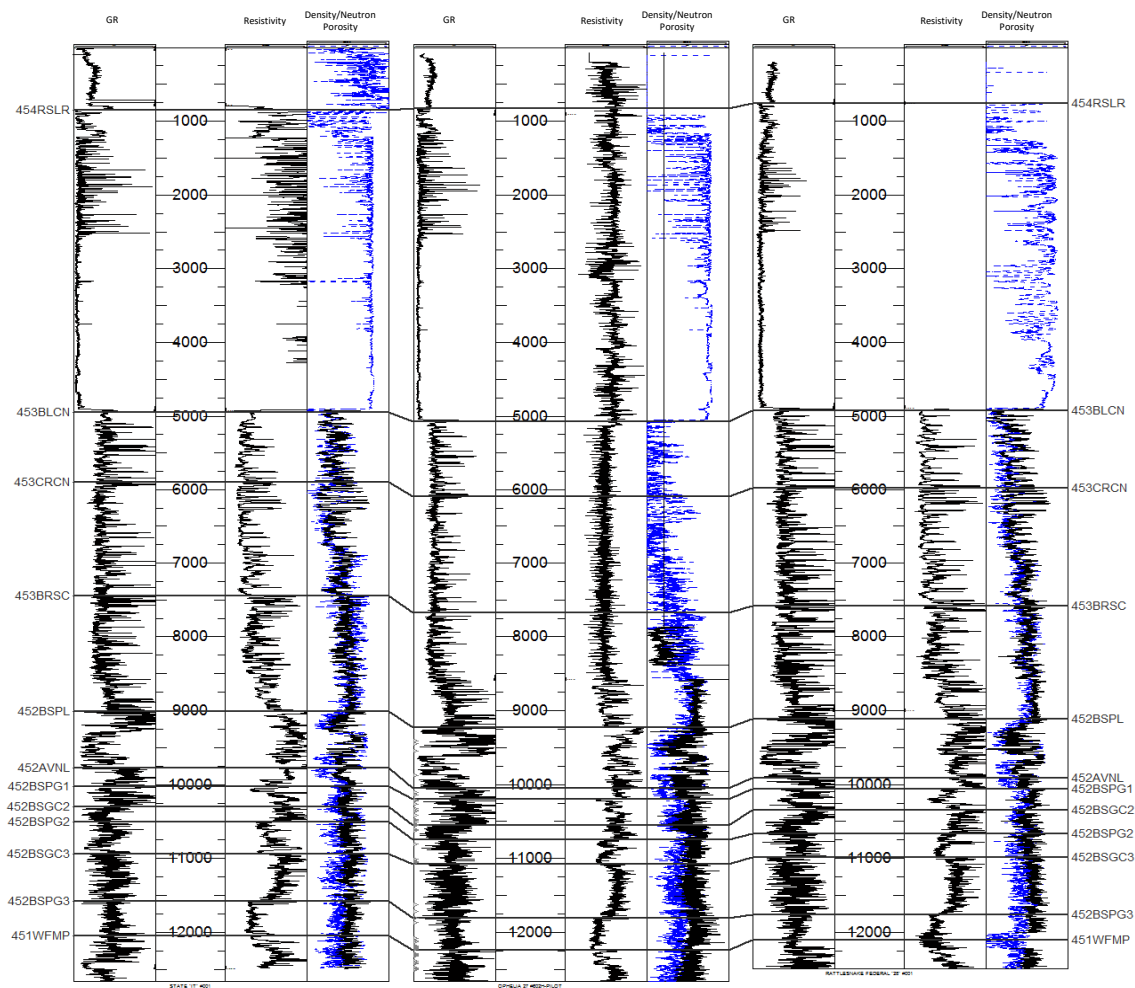
A
North

STATE 'IT' #001
30025269780000
ELEV_KB : 3,292

OPHELIA 27 #602H-PILOT
30025418150000
ELEV_KB : 3,318

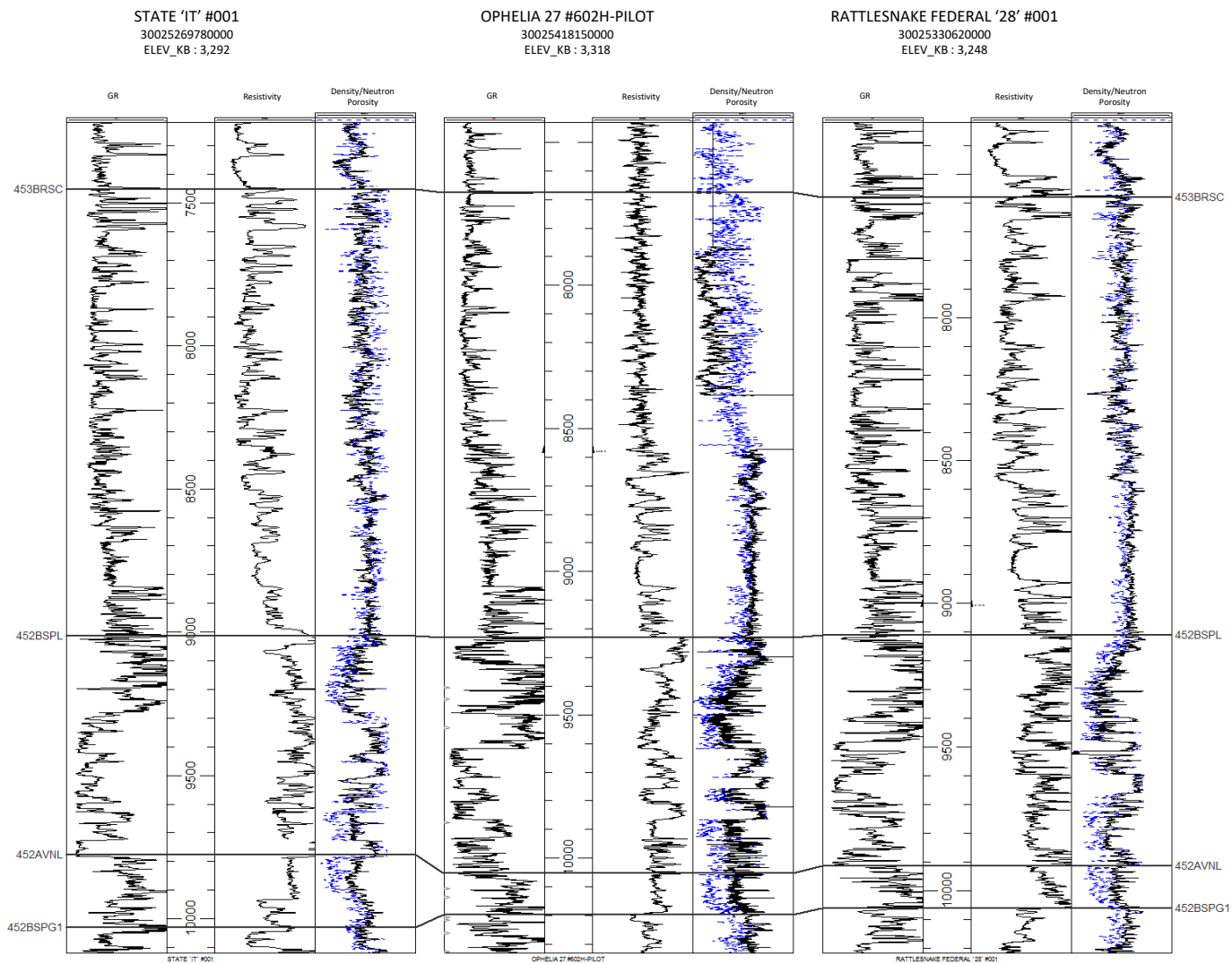
RATTLESNAKE FEDERAL '28' #001
30025330620000
ELEV_KB : 3,248

A'
South



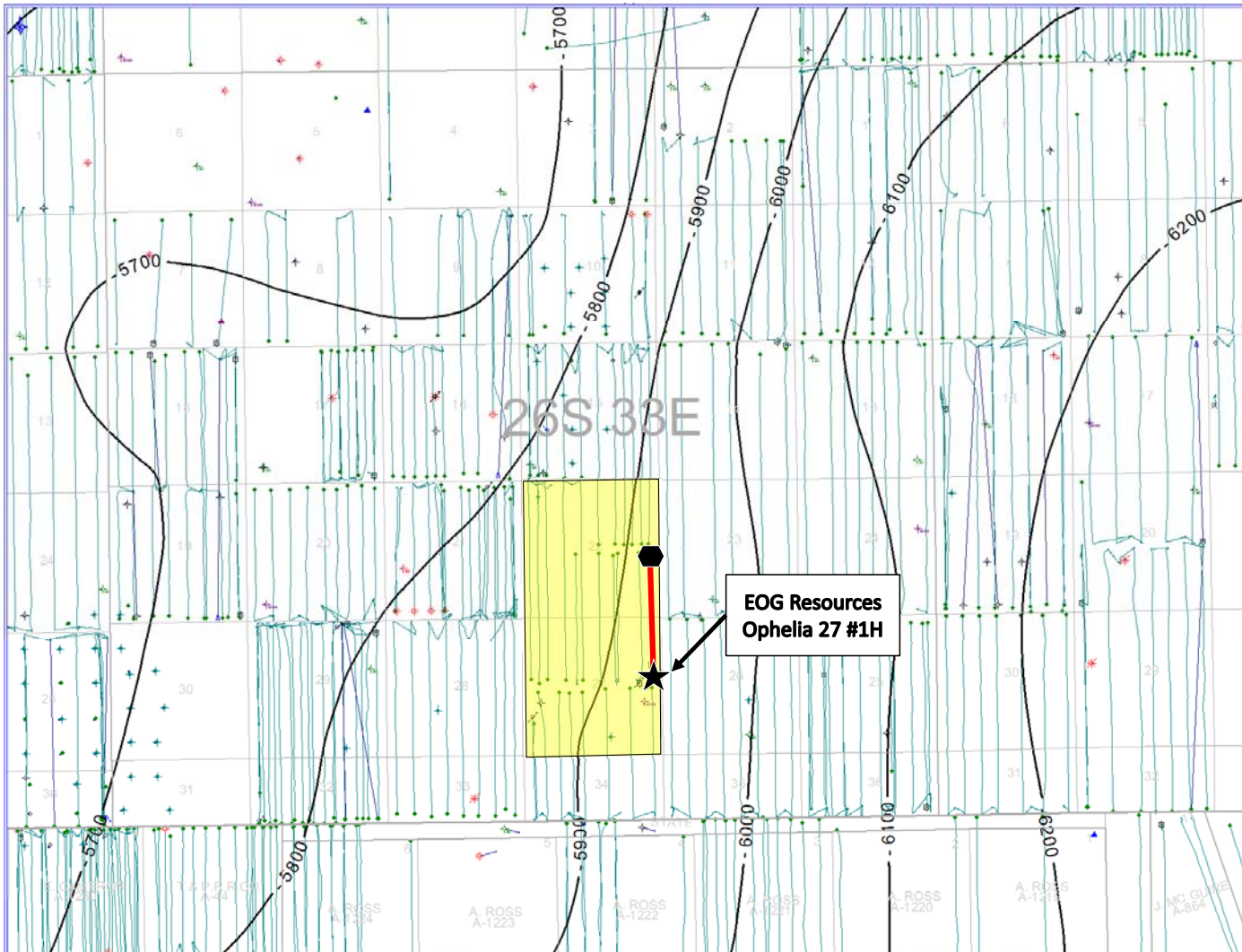
Ophelia Area Cross Section

A
North

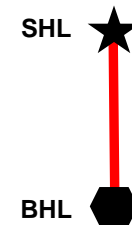


A'
South

Ophelia Area Structure with Top Bone Spring Lime (SSTVD)



Map Legend



EOG Resources --
Horizontal Well Location
(Ophelia 27 #1H)

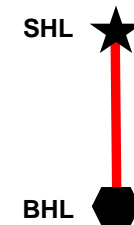


EOG Acreage

Ophelia Area Isopach with Top Bone Spring Lime to Top First Bone



Map Legend

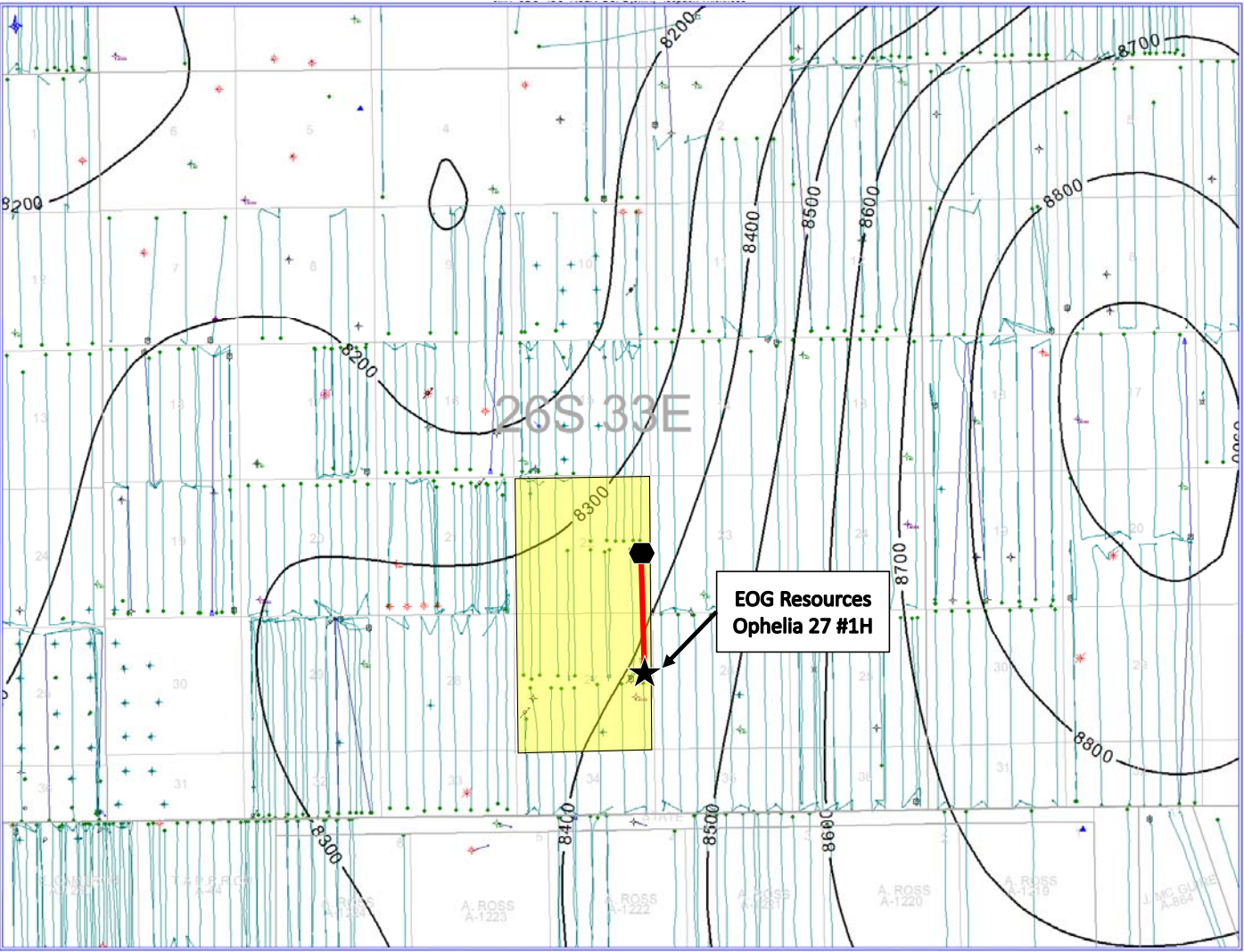


EOG Resources --
Horizontal Well Location
(Ophelia 27 #1H)






EOG Acreage

Ophelia Area Isopach with Top Rustler to Top Bone Spring Lime

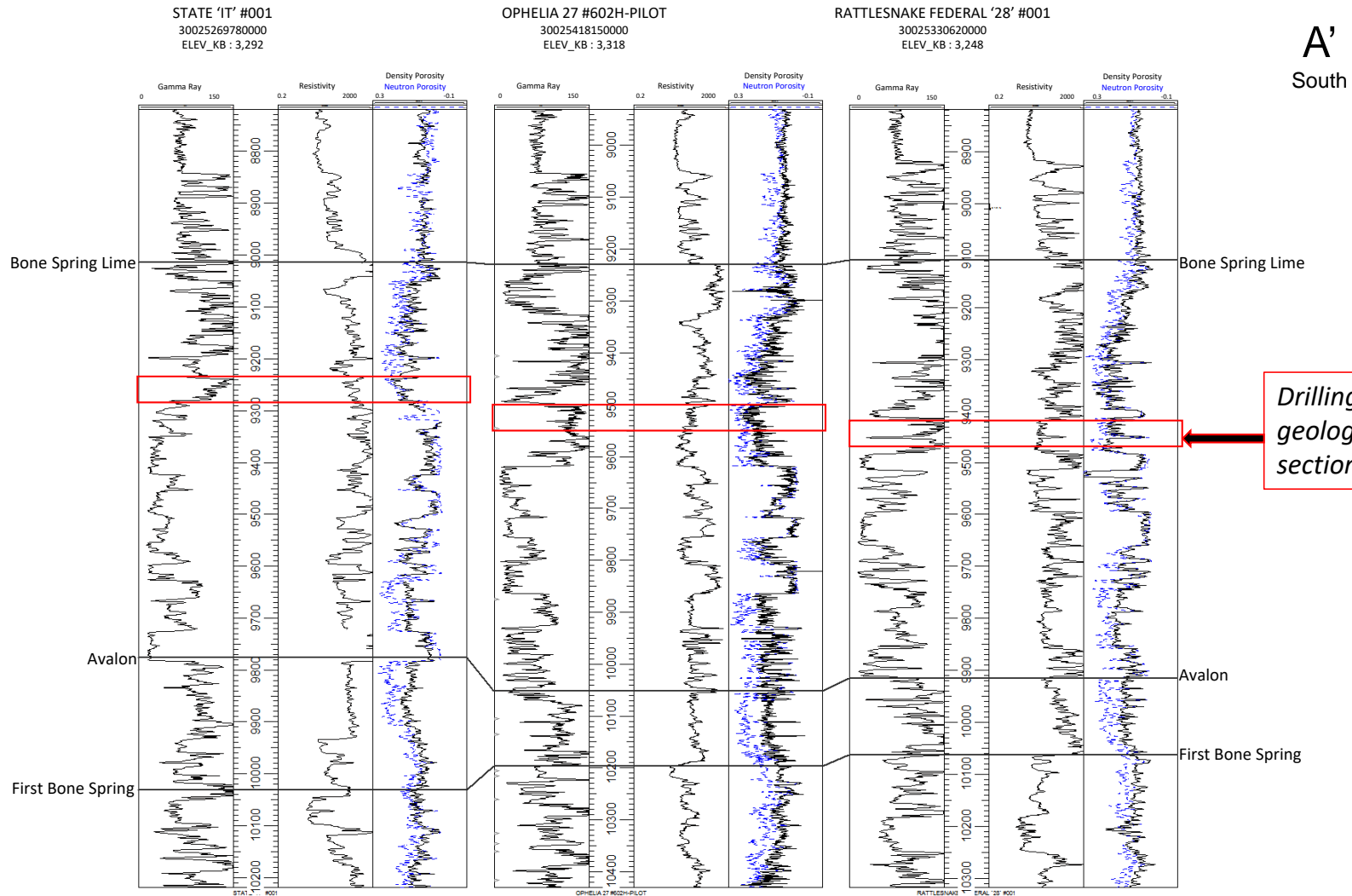


Map Legend

- SHL  EOG Resources -- Horizontal Well Location (Ophelia 27 #1H)
- BHL 
-  EOG Acreage

Ophelia Area Cross Section

A
North



A'
South

Drilling window with geologically equivalent section across wells