

DISTRICT I
1825 N. French Dr., Hobbs, NM 88240
Phone (575) 393-8161 Fax: (575) 393-0720

DISTRICT II
811 S. First St., Artesia, NM 88210
Phone (575) 748-1263 Fax: (575) 748-9720

DISTRICT III
1000 Rio Brazos Rd., Aztec, NM 87410
Phone (505) 334-6176 Fax: (505) 334-6170

DISTRICT IV
1220 S. St. Francis Dr., Santa Fe, NM 87505
Phone (505) 478-3460 Fax: (505) 478-3462

State of New Mexico
Energy, Minerals and Natural Resources Department

Submit one copy to appropriate
District Office

OIL CONSERVATION DIVISION
1220 South St. Francis Dr.
Santa Fe, New Mexico 87505

WELL LOCATION AND ACREAGE DEDICATION PLAT

AMENDED REPORT

API Number	Pool Code	Pool Name
	98220	PURPLE SAGE WOLFCAMP GAS POOL
Property Code	Property Name	Well Number
	CAVEMAN	402H
OGRID No.	Operator Name	Elevation
	SPC RESOURCES, LLC	3099'

Surface Location

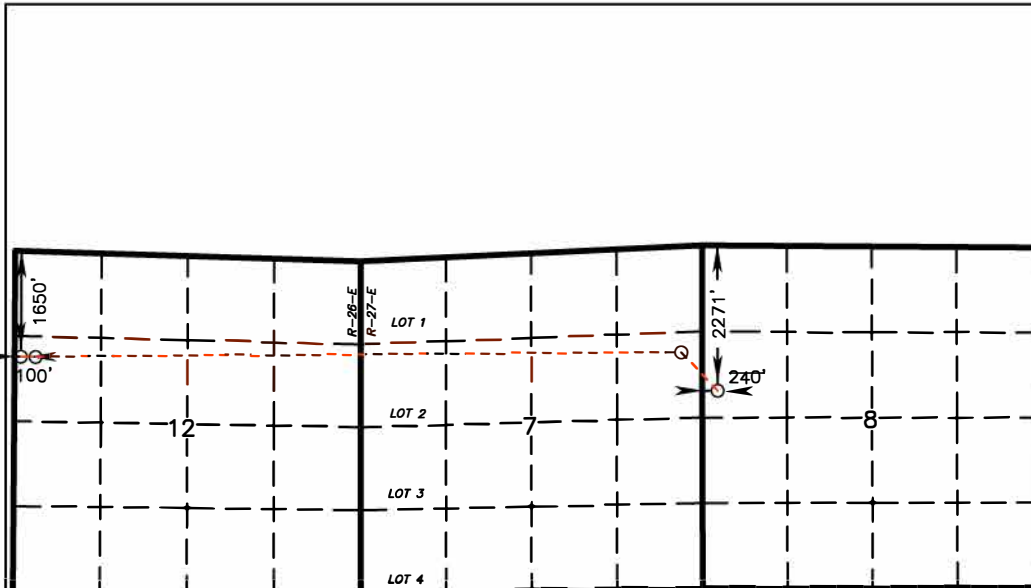
UL or lot No.	Section	Township	Range	Lot Idn	Feet from the	SOUTH/South line	Feet from the	East/West line	County
E	8	22 S	27 E		2271	NORTH	240	WEST	EDDY

Bottom Hole Location If Different From Surface

UL or lot No.	Section	Township	Range	Lot Idn	Feet from the	SOUTH/South line	Feet from the	East/West line	County
E	12	22 S	26 E		1650	NORTH	100	WEST	EDDY

Dedicated Acres	Joint or Infill	Consolidation Code	Order No.
1,267.10			

NO ALLOWABLE WILL BE ASSIGNED TO THIS COMPLETION UNTIL ALL INTERESTS HAVE BEEN CONSOLIDATED
OR A NON-STANDARD UNIT HAS BEEN APPROVED BY THE DIVISION



OPERATOR CERTIFICATION

I hereby certify that the information contained herein is true and complete to the best of my knowledge and belief, and that this organization either owns a working interest or unLEASEd mineral interest in the land including the proposed bottom hole location or has a right to drill this well at this location pursuant to a contract with an owner of such a mineral or working interest, or to a voluntary pooling agreement or a compulsory pooling order heretofore entered by the division.

Signature _____ Date _____

Printed Name _____

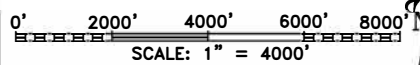
Email Address _____

SURVEYOR CERTIFICATION

I hereby certify that the well location shown on this plat was plotted from field notes of actual surveys made by me or under my supervision, and that the same is true and correct to the best of my belief.

Date Surveyed _____
Signature & Seal of Professional Surveyor _____

Certificate No. _____ Acres 7977
BASIN SURVEYS



WO Num.: 34729

BOTTOM HOLE LOCATION

Lat - N 32.410061
Long - W 104.254726
NMSPCE - N 512920.2
E 565595.8
(NAD-83)

LAST TAKE POINT

1650 FNL & 330 FWL
Lat - N 32.410039
Long - W 104.253981
NMSPCE - N 512912.4
E 565826.0
(NAD-83)

FIRST TAKE POINT

1650 FNL & 330 FEL
Lat - N 32.410231
Long - W 104.221300
NMSPCE - N 512991.2
E 575910.6
(NAD-83)

SURFACE LOCATION

Lat - N 32.408564
Long - W 104.219452
NMSPCE - N 512385.6
E 576482.0
(NAD-83)



DISTRICT I
1825 N. French Dr., Hobbs, NM 88240
Phone (575) 393-8161 Fax: (575) 393-0720

DISTRICT II
811 S. First St., Artesia, NM 88210
Phone (575) 748-1283 Fax: (575) 748-9720

DISTRICT III
1000 Rio Brazos Rd., Aztec, NM 87410
Phone (505) 334-6176 Fax: (505) 334-6170

DISTRICT IV
1220 S. St. Francis Dr., Santa Fe, NM 87505
Phone (505) 478-3480 Fax: (505) 478-3482

State of New Mexico
Energy, Minerals and Natural Resources Department

Form C-102
Revised August 4, 2011

Submit one copy to appropriate
District Office

OIL CONSERVATION DIVISION
1220 South St. Francis Dr.
Santa Fe, New Mexico 87505

WELL LOCATION AND ACREAGE DEDICATION PLAT

AMENDED REPORT

API Number	Pool Code	Pool Name
	98220	PURPLE SAGE WOLFCAMP GAS POOL
Property Code	Property Name	Well Number
	CAVEMAN	442H
OGRID No.	Operator Name	Elevation
	SPC RESOURCES, LLC	3096'

Surface Location

UL or lot No.	Section	Township	Range	Lot Idn	Feet from the	SOUTH/South line	Feet from the	East/West line	County
E	8	22 S	27 E		2291	NORTH	240	WEST	EDDY

Bottom Hole Location If Different From Surface

UL or lot No.	Section	Township	Range	Lot Idn	Feet from the	SOUTH/South line	Feet from the	East/West line	County
E	12	22 S	26 E		2310	NORTH	100	WEST	EDDY

Dedicated Acres	Joint or Infill	Consolidation Code	Order No.
1,267.10			

NO ALLOWABLE WILL BE ASSIGNED TO THIS COMPLETION UNTIL ALL INTERESTS HAVE BEEN CONSOLIDATED
OR A NON-STANDARD UNIT HAS BEEN APPROVED BY THE DIVISION

LOT 1
R-26-F
R-27-E

LOT 2
F.T.P. S.L.

LOT 3

LOT 4

N514641.4
E578889.9
N AD83

N514624.6
E581530.2
N AD83

N511968.1
E576243.1
N AD 83

N509295.3
E576249.4
NAD 83

N50931.2
E581561.0
NAD 83

BOTTOM HOLE LOCATION
Lat - N 32.408244°
Long - W 104.254742°
NMSPCE- N 512259.2
E 565591.4
(NAD-83)

LAST TAKE POINT
2310' FNL & 330' FWL
Lat - N 32.408224°
Long - W 104.253997°
NMSPCE- N 512252.2
E 565821.4
(NAD-83)

FIRST TAKE POINT
2310' FNL & 330' FEL
Lat - N 32.408414°
Long - W 104.221298°
NMSPCE- N 512330.5
E 575912.2
(NAD-83)

SURFACE LOCATION
Lat - N 32.408509
Long - W 104.219451
NMSPCE- N 512365.7
E 576482.1
(NAD-83)

OPERATOR CERTIFICATION

I hereby certify that the information contained herein is true and complete to the best of my knowledge and belief, and that this organization either owns a working interest or unLEASEd mineral interest in the land including the proposed bottom hole location or has a right to drill this well at this location pursuant to a contract with an owner of such a mineral or working interest, or to a voluntary pooling agreement or a compulsory pooling order heretofore entered by the division.

Signature _____ Date _____

Printed Name _____

Email Address _____

SURVEYOR CERTIFICATION

I hereby certify that the well location shown on this plat was plotted from field notes of actual surveys made by me or under my supervision, and that the same is true and correct to the best of my belief.

DECEMBER 30, 2020
Date Surveyed

Signature & Seal of
Professional Surveyor
7977

Certificate No. 7977
BASIN SURVEYS

0' 1500' 3000' 4500' 6000'
SCALE: 1" = 3000'
WO Num.: 35236