



# United States Department of the Interior



BUREAU OF LAND MANAGEMENT  
Wyoming State Office Reservoir Management Group  
2987 Prospector Drive  
Casper, Wyoming 82604-2968

In Reply Refer To:

3186  
(3186.1)  
Bell Lake Unit  
NMNM68292X

MAR 10 2022

Kaiser-Francis Oil Company  
Attn: David V. Hamilton  
P.O. Box 21468  
Tulsa, Oklahoma 74121-1468

Re: First Revision to the Wolfcamp Formation Participating Area "A"  
Bell Lake Unit  
Lea County, New Mexico

Gentlemen:

The First Revision to the Wolfcamp Formation Participating Area "A" is hereby approved effective as of August 1, 2019, pursuant to Section 11 of the Bell Lake Unit Agreement, Lea County, New Mexico.

The application enlarges the Wolfcamp Formation Participating Area "A" from 479.31 acres to 959.31 acres and is based upon the completion of unit well 401H, located in the SW $\frac{1}{4}$ NW $\frac{1}{4}$  (SHL) of Section 1, T.24N, R.33E., unit tract No. 59, state lease, and in the SW $\frac{1}{4}$ SW $\frac{1}{4}$  (BHL) of Section 12, T.24.S., R.33E., unit tract No. 19, Lease No. NMLC063798, with an initial potential of 1,300 BOPD and 3,860 MCFPD from the Wolfcamp Formation. The well was completed on August 12, 2019.

Copies of the approved request are being distributed to the appropriate agencies and one copy of Exhibits "A" and "B" is returned herewith. Please advise all interested parties of the approval of the First Revision to the Wolfcamp Formation Participating Area "A" effective as of August 1, 2019.

Any production royalties that are due must be reported and paid within 30 days of the Bureau of Land Management's approval date or the payors will be assessed interest for late payment under the Federal Oil and Gas Royalty Management Act of 1982 (30 CFR 218.54). If you need assistance or clarifications, please contact the Office of Natural Resources Revenue at <http://onrr.gov> or <https://onrr.gov/about/contact.htm>.

If you have any questions, please call the undersigned at (307) 261-7685.

Sincerely,

**/S/ J. David Chase**

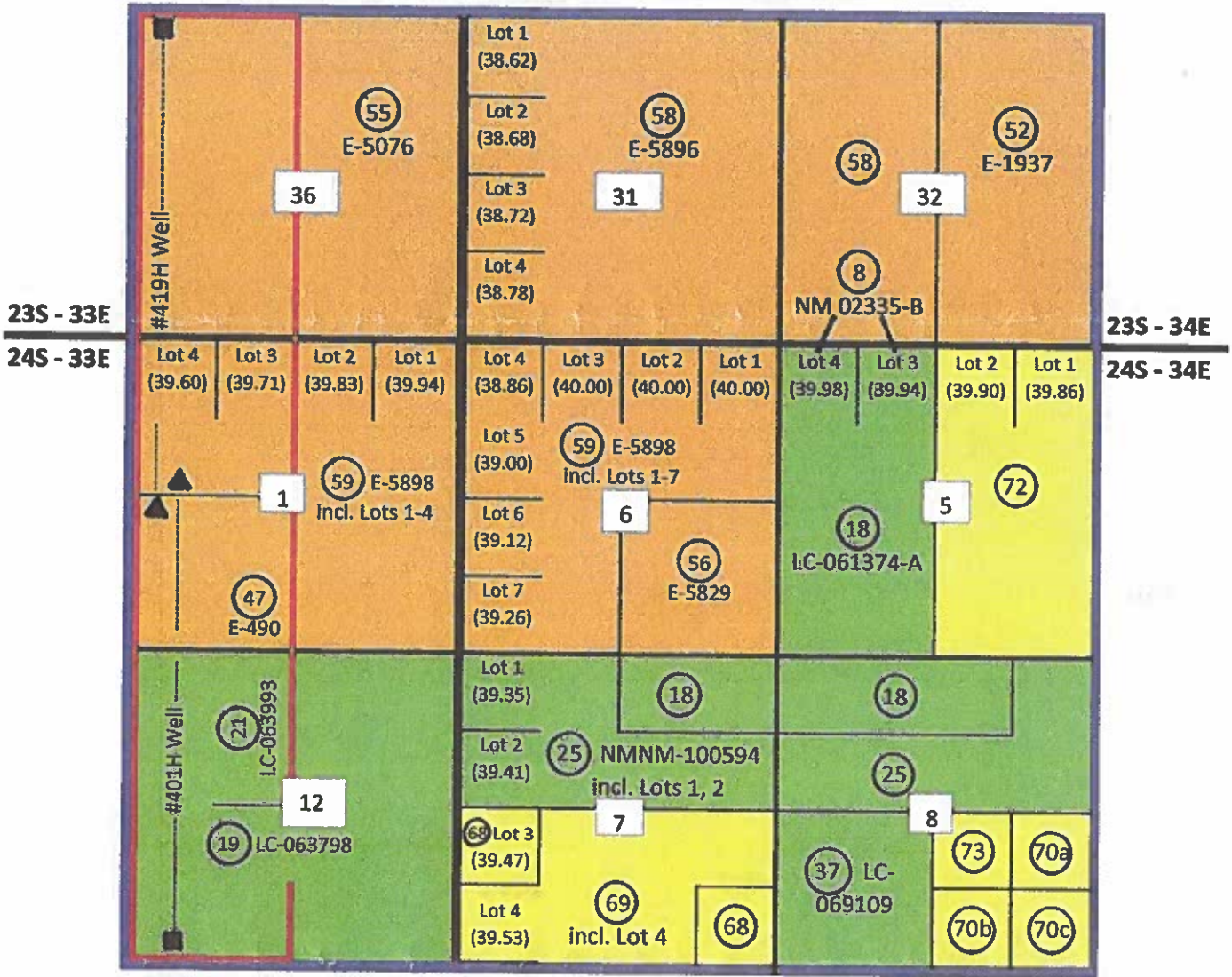
J. David Chase  
Chief, Reservoir Management Group

1 Enclosure

Encl. 1 - Exhibits "A" and "B"

cc: NMSO, Sheila Mallory w/exhibits A & B  
ONRR-RRM (email: [leases.blm@onrr.gov](mailto:leases.blm@onrr.gov)) w/exhibits A & B  
New Mexico State Land Office, Scott Dawson w/exhibits A & B  
New Mexico Oil Conservation Division, Leonard Lowe w/exhibits A & B

**EXHIBIT "A"**  
**UNIT MAP WITH PA BOUNDARY**  
**1st REVISION WOLFCAMP PARTICIPATING AREA "A"**  
**BELL LAKE UNIT-LEA COUNTY, NM**  
**EFFECTIVE DATE: AUGUST 1, 2019**



- Federal Acreage
- Patented Acreage
- State of New Mexico Acreage
- Bell Lake Unit Outline
- PA A Outline
- HZ Well Path
- Well Surface Locations
- Well Bottom Hole Location

**RECEIVED**

MAR 09 2022

Bureau of Land Management  
 Reservoir Management Group

RECEIVED

FEB 23 2022

Bureau of Land Management  
Reservoir Management Group

EXHIBIT "B"  
SCHEDULE OF LANDS AND TRACT PARTICIPATION  
1st REVISION TO THE WOLFCAMP FORMATION PARTICIPATING AREA "A"  
BELL LAKE UNIT  
LEA COUNTY, NEW MEXICO  
EFFECTIVE DATE: AUGUST 1, 2019

Tract No.	Lease No.	Description	Participating Acres	Non-Participating Acres	Percent of Participation
19	FEDERAL NMLC063798	T24S-R33E Section 12: SW/4	160.00	0.00	16.6787%
21	FEDERAL NMLC063993	T24S-R33E Section 12: NW/4	160.00	0.00	16.6787%
47	State NM E-490	T24S-R33E Section 1: SW/4	160.00	0.00	16.6787%
55	State NM E-5076	T23S-R33E Sec 36: W/2	320.00	0.00	33.3573%
59	State NM E-5898	T24S-R33E Sec 1: Lot 3 (39.71 ac.); Lot 4 (39.60 ac.); S/2NW/4	159.31	0.00	16.6066%
Totals			959.31	0.00	100.0000%

TYPE OF LAND	COMMITTED ACRES	NON-COMMITTED ACRES	PERCENT
FEDERAL	320.00	0.00	33.3574%
STATE	639.31	0.00	66.6426%
PATENTED	0.00	0.00	0.0000%
<b>TOTAL</b>	<b>959.31</b>	<b>0.00</b>	<b>100.0000%</b>