

Porosity and Volume Calculations

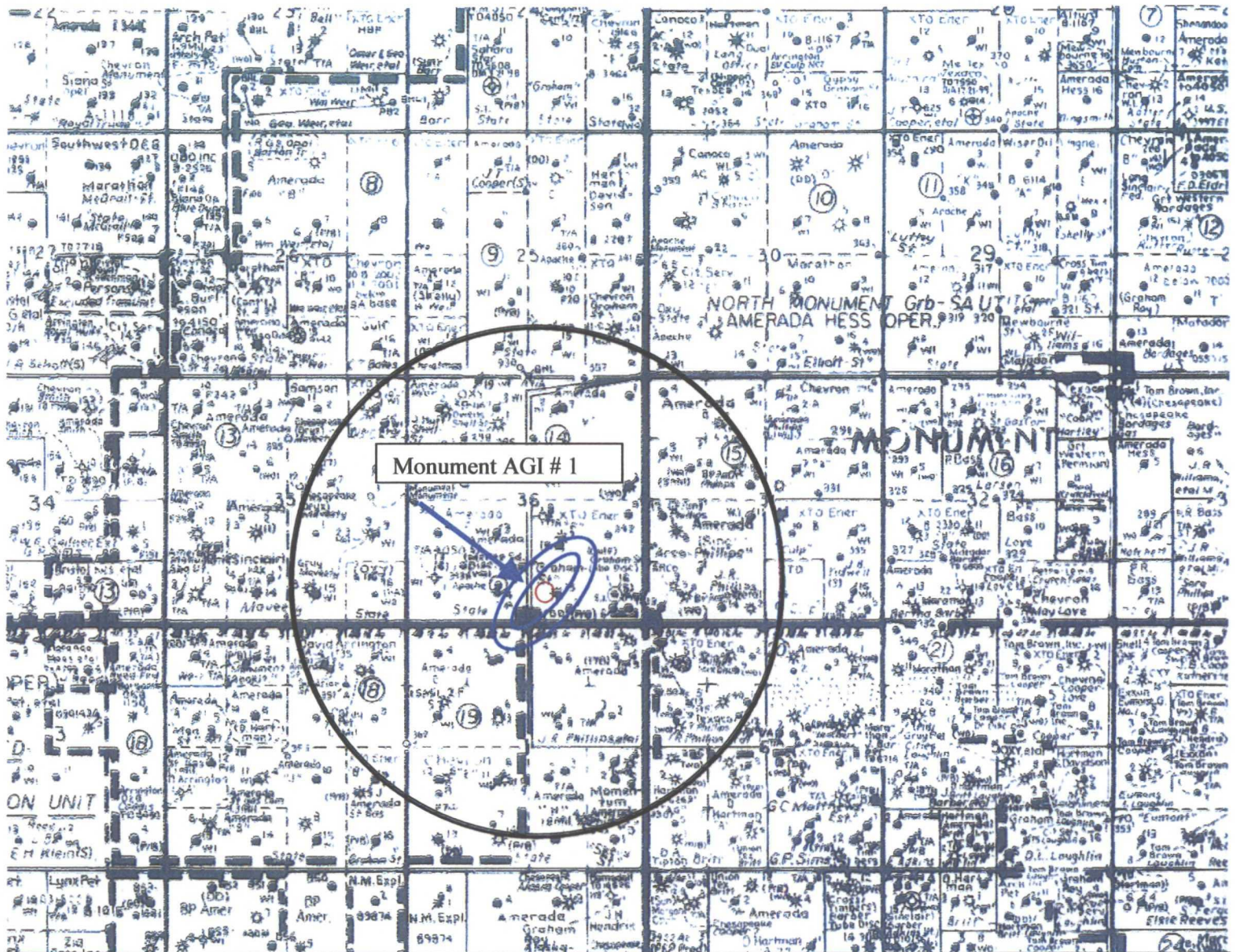
Targa Midstream Services, LP

Monument AGI # 1
 30-025-40002
 Sec 36 T19S R36E
 Lea County New Mexico

Low rate 3500 bpd / High rate 5000 bpd

| | | | |
|-------------------------------|-----------|---------------|------------------------------------|
| Gallons per Barrel | 42 | gallons | |
| Gallons per cubic feet | 7.48 | gal/cuft | |
| Cubic feet per barrel | 5.61 | | |
| Low Barrels/day | 3500 | bbls/d | |
| High barrels/day | 5000 | bbls/d | |
| Low cubic ft/day | 16635 | cuft/day | 3500 X 5.61 |
| High cubic ft/day | 28050 | cuft/day | 5000 X 5.61 |
| Acre ft | 43560 | sqft/acre | |
| Reservoir thickness | 318 | feet | Measured from open hole logs. |
| Average porosity | 7.87 | | Measured from open hole logs. |
| Net porosity feet | 25.02 | | Measured from open hole logs. |
| Available volume/acre | 1089871.2 | | 25.02 X 43560 |
| Low rate days/acre | 55.51 | days/acre | 1089871.2/19635 |
| High rate days/acre | 38.85 | days/acre | 1089871.2/28050 |
| Low rate years/acre | 0.152 | years/acre | 55.51/365 |
| High rate years/acre | 0.106 | years/acre | 38.85/365 |
| Low rate acre/year | 6.58 | acre/year | 1/.152 |
| High rate acre/year | 9.43 | acre/year | 1/.106 |
| Low rate acre/30years | 197.4 | acres/30years | 30 X 6.58 |
| High rate acre/30years | 282.9 | acres/30years | 30 X 9.43 |
| Low rate Radius of Injection | 1654.4 | feet | 197.4 X 43560 = 3.14R ² |
| High rate Radius of Injection | 1980.5 | feet | 282.9 X 43560 = 3.14R ² |

ex 11
 calc of 4a



TARGA MIDSTREAM SERVICES, LP

Calculated Area of Injection for the Monument AGI No. 1 Well

| | |
|---|-------|
| 30 Year Low rate (3500 barrels per day) Injection Radius | 1245' |
| 30 Year High rate (5000 barrels per day) Injection Radius | 1487' |

