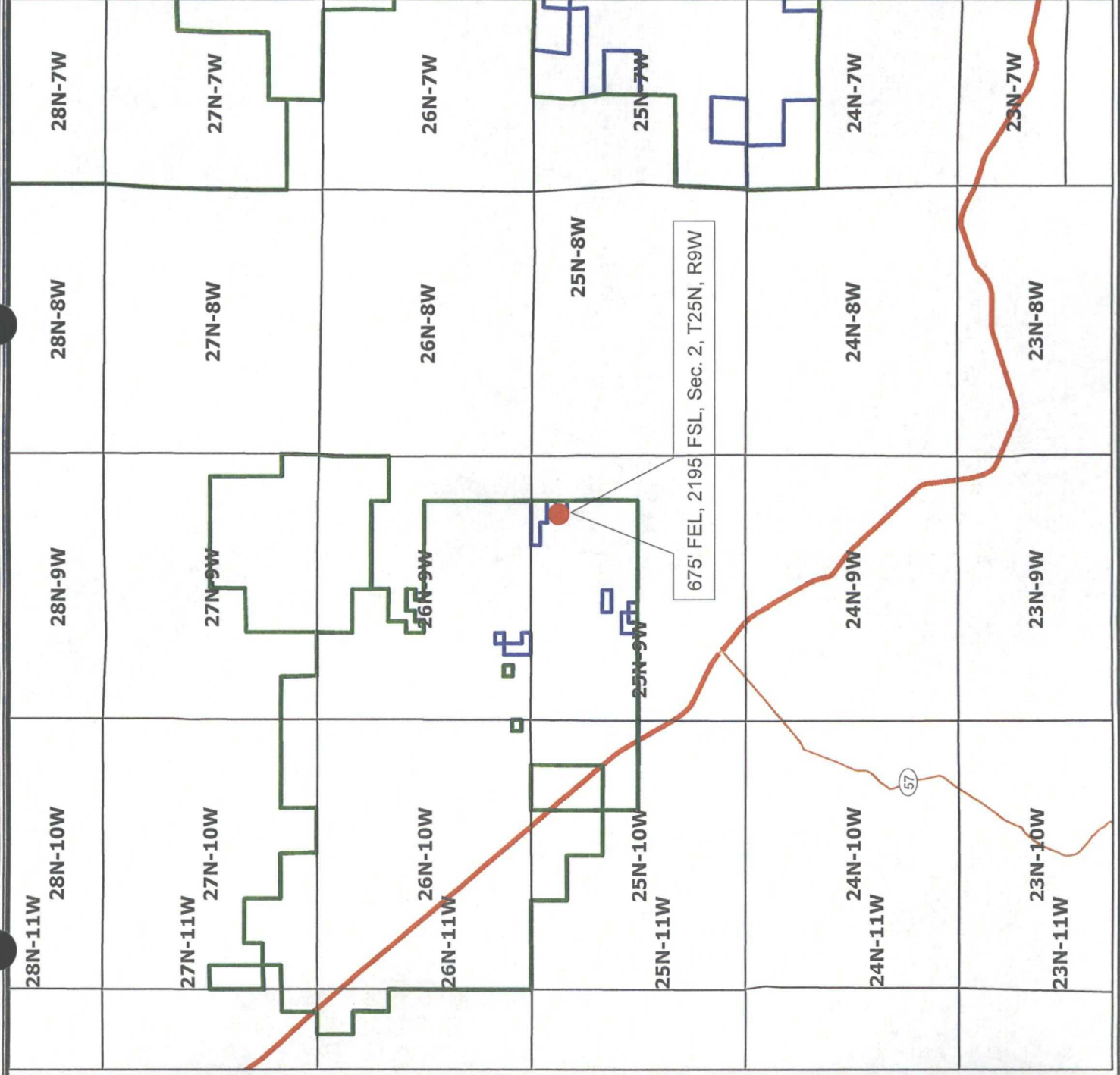


1	Locator Map
2	Nine Section Map and Type Log
3	Application to Drill (APD)
4	Joint Operating Agreement (JOA) Schedule
5	Parties to be Pooled and JOA Exhibit A
6	Chronology and Well Proposal
7	2011 Joint Operating Agreements
8	Cost Allocation Procedures
9	Authorization for Expenditure (AFE)
10	Order R-
11	Attorney's Certification of Mailing and Newspaper Notice
12	Downhole Co-mingle (DHC) Approval (C107 (A))
13	Koch
14	
15	



Before the Oil Conservation Division
Exhibit No. 1
Burlington Resources Oil & Gas Company LP
OCD CASE 14734
Hearing: October 13, 2011



Legend

- Townships_(SJD)
- L48.AII.SUB.FEDERAL_UNITS
- L48.SJB.FEDERAL_UNITS_BR
- Limited Access
- Highway
- Major Road
- Local Road
- Minor Road
- Other Road
- Ramp
- Ferry
- Pedestrian Way
- Major Road



1:248,502
 - 1" equals 20,708'
 GCS Assumed Geographic 1

Proposed Huerfano Unit Com 311
 Gallup/Dakota New Drill



ConocoPhillips
 © Unpublished Work, ConocoPhillips

LOCATOR MAP

Huerfano Unit Com 311 New Drill
 Gallup & Dakota Formations
 E/2 Sec. 2, T25N, R9W
 San Juan County, NM

Author:	Date: 8/15/2011
Compiled by:	Scale: <Scale>

\\projects\Public\Projects\DSWHuerfano Unit Com 311\Locator Map - 8-2011