



12046

RECEIVED OCD

2012 MAR -6 P 12:49

EOG Resources, Inc.

P.O. Box 2267
Midland, TX 79702.
(432) 686-3600

March 2, 2012

Bureau of Land Management
Carlsbad Field Office
620 E. Greene St.
Carlsbad, New Mexico 88220-6292

State of New Mexico
Oil Conservation Division
1220 South St. Francis Drive
Santa Fe, New Mexico 87504

Re: Corbin Federal Delaware Unit
Serial No. NMNM 100723X
2012 Plan of Development
Lea County, New Mexico
EOG Resources, Inc. Contract K0080046-C

Gentlemen:

EOG Resources, Inc. (EOG), as Unit Operator of the Corbin Federal Delaware Unit (CDU), hereby submits for your approval, our 2012 Plan of Development.

Items included are as follows: Planned 2012 operations; previous year operations; current status of all wells within the unit; production graphs for each productive reservoir. Also attached is a current map, showing respectively the units: structural and geologic interpretations; participating area boundaries; wells, flow-lines, and roads.

It is understood that approval of this plan does not approve the work covered by the plan. Individual approval is still required for such items as APDs/ROWs/etc.

Any modifications or additions to this Plan of Development will be filed as supplements to the plan.

Sincerely,

Douglas W. Hurlbut
Land Advisor

2012 Planned Operations:

Drilling -

At this time, EOG does not plan any new drill wells in the CDU.

Completions -

At this time, EOG does not plan any new drill wells in the CDU.

Plug Back -

At this time, EOG does not plan any plug backs in the CDU.

Conversion -

At this time, EOG does not plan any conversions in the CDU.

Abandonment -

None

Other surface disturbing operations -

None

Previous Year Operations (2011):

Drilling –

EOG did not drill any new wells in the CDU in 2011.

Completions –

EOG did not complete any wells in the CDU in 2011.

Plug Back –

EOG did not plug back any wells in the CDU in 2011.

Conversion –

EOG did not complete any conversions in the CDU in 2011.

Abandonment –

None

Other surface disturbing operations –

None

Status of all Wells within the Unit:

WELL NAME & NUMBER	API NUMBER	COMP DATE	ZONE	STATUS
CDU #2	3002525309	09-13-1976	Delaware	Producing
CDU #17	3002530727	12-20-1989	Delaware	Producing
CDU #22	3002530860	05-09-1990	Delaware	Producing
CDU #24	3002530889	05-21-1990	Delaware	Producing

Production Graphs:

See Attachments

Map of structural and geologic interpretations, participating area boundaries, wells, flow-lines, and roads:

See Attachments

The working interest owners have been provided a copy of this 2012 Plan of Development. EOG Resources, Inc. and the working interest owners believe that all current Corbin Federal Delaware Unit obligations have been satisfied.

The working interest owners have been provided a copy of this 2012 Plan of Development. EOG Resources, Inc. and the working interest owners believe that all current Corbin Federal Delaware Unit obligations have been satisfied.

In accordance with Section 11 of the Corbin Federal Delaware Unit Agreement, please signify your approval of the 2012 Plan of Development by executing in the signature block below. Please return one approved copy to EOG Resources, Inc. at the letterhead address.

Should you have any questions or comments in this regard, please contact me at 432-686-3610.

Bureau of Land Management

Date

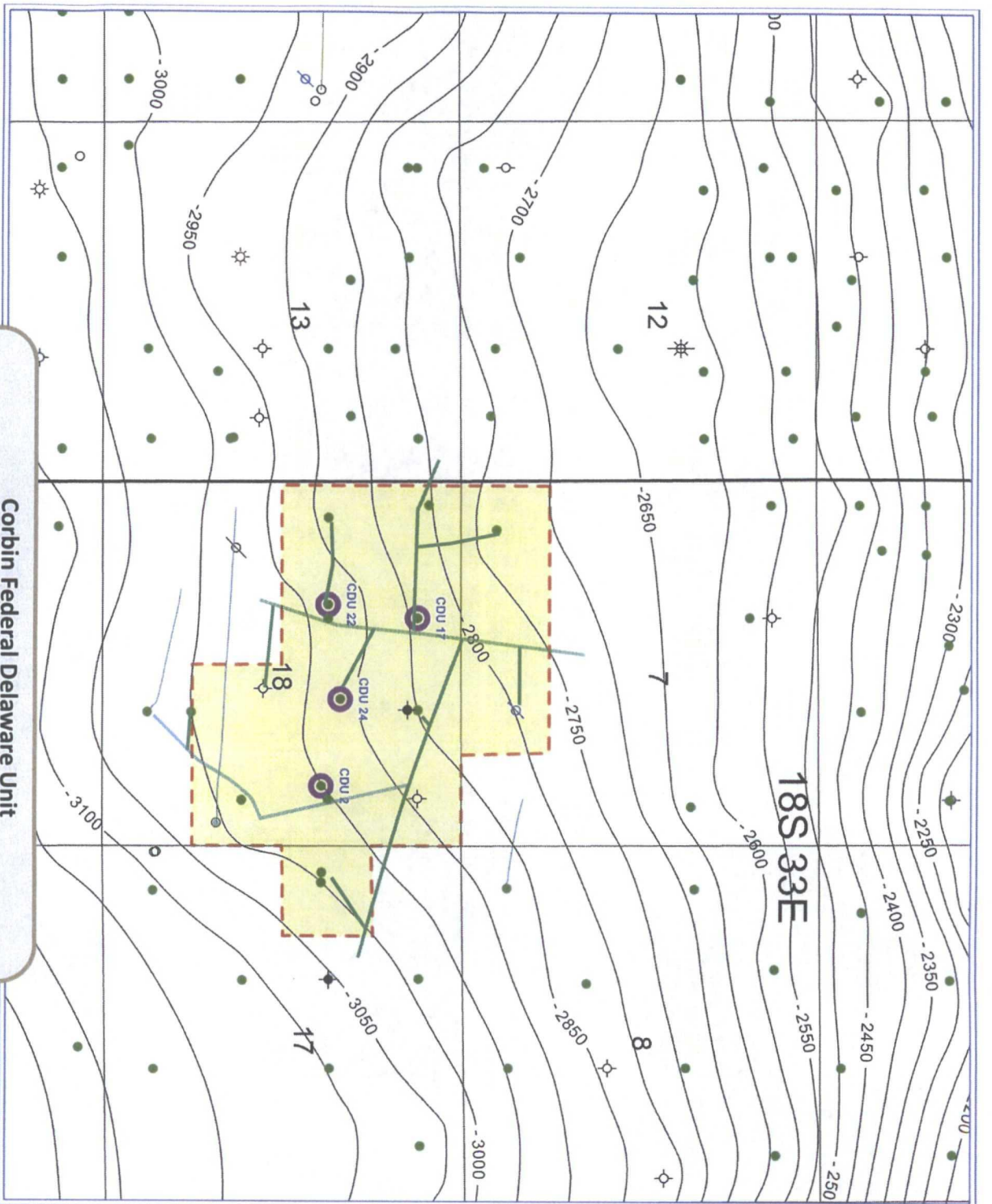
New Mexico Oil Conservation Division

Date


The foregoing approvals are for the 2012 Plan of Development for the Corbin Federal Delaware Unit, Lea County, New Mexico.


cc: Devon Energy Production Co.
20 N. Broadway
Oklahoma City, OK 73102
Attn: Jim Ball

RKC, Inc.
7500 E. Arapahoe Road, Suite 380
Centennial, CO 80112
Attn: Anthony Kochevar




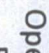
Corbin Federal Delaware Unit
Eddy County, NM
Twn / Rng:
18S - 33E

 Operating Unit Boundary

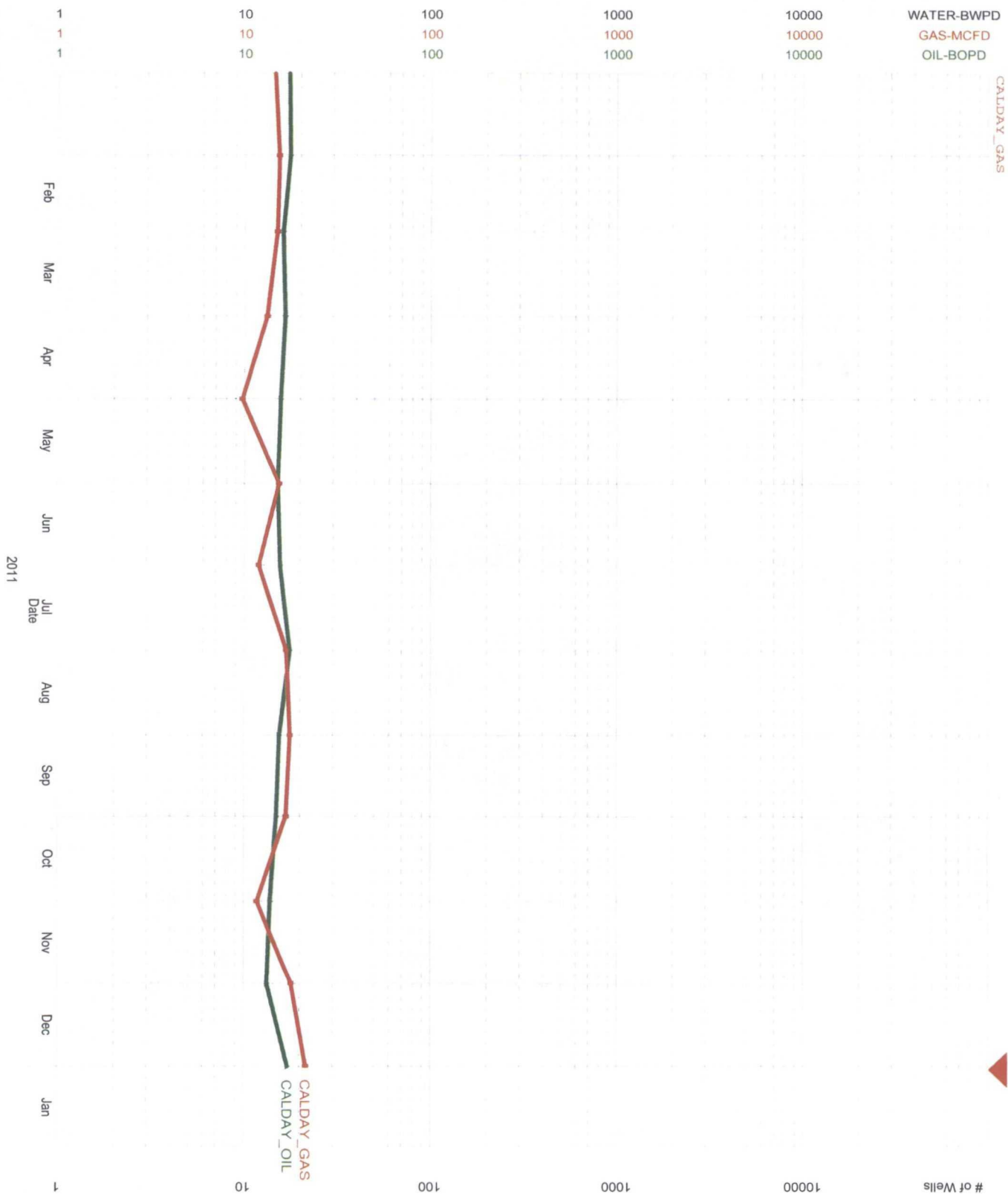
 Roads/Pipelines

Corbin Federal Delaware Unit
Lea County, NM
Twn / Rng:
18S-33E

 Structure on
 Top of Bone Spring Lime
 Contour Interval 50 feet

 Operating Unit
 Boundary

TOTAL



OIL-BOPD 1/2012 655302
 Ref= 655302
 Cum= 655302
 GAS-MCFD 1/2012 606089
 Ref= 606089
 Cum= 606089
 WATER-BWPD 1/2012 3380073
 Ref= 3380073
 Cum= 3380073
 # of Wells 1/2012 553
 Ref= 553
 Cum= 553