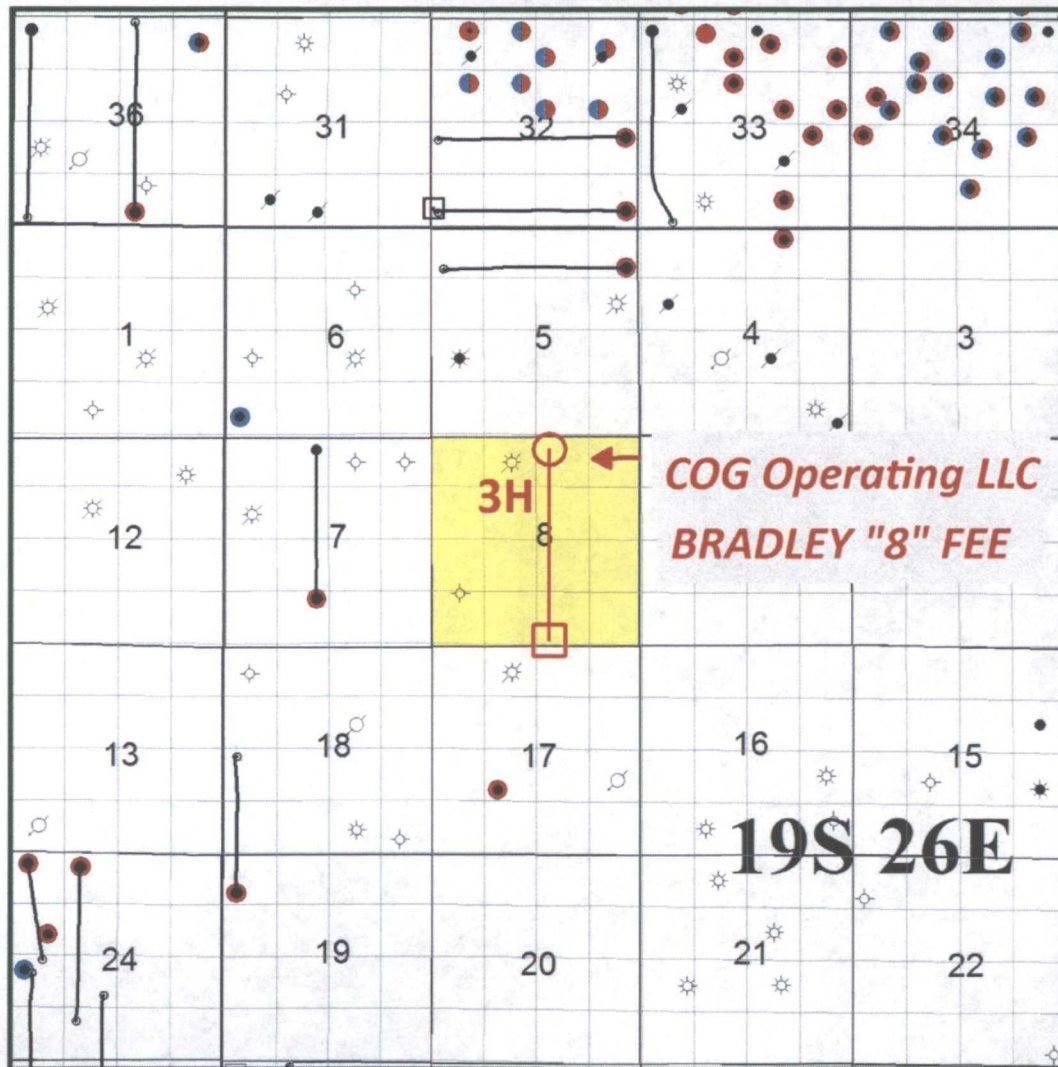


**COG OPERATING LLC  
BRADLEY "8" FEE #3H  
HEARING  
(API:30-015-39812)**

**Lakewood Area - Eddy County, New Mexico**



# Lakewood Area – BRADLEY “8” Fee #3H Lease Map



## Map Legend

- Paddock Producer
- Blinbry Producer

- BHL ○ COG - Horizontal Location (Bradley “8” Fee #3H)
- SHL □

Concho Acreage



Working Interest Owners	Working Interest
COG Operating LLC	83.01559895%
Concho Oil & Gas LLC	0.17710938%
Sharbro Oil, Ltd.	3.54218750%
Carol Sue Sanford Garret*	1.25000000%
Jonell J. Howell*	1.18072917%
Judson Properties, Ltd.*	5.62500000%
B&G Royalties, Ltd. *	1.04062500%
Ross A. Barlett, Dorothy E. Barlett, Ross E. Barlett and James O. Barlett, Trustees under Declaration of Trust dated 11/05/1985 executed by Ross A. Barlett and Dorothy E. Bartlett, and known as the Ross A. Bartlett Family Trust*	4.16875000%
	100.00000000%