

Structural Cross Section "RESLER B": Equally Spaced Wellbores  
 Datum = 0 ft Subsea  
 Vertical Scale = 2 in per 100 ft

B

B'

300251080500  
 WESTBROOK OIL CORP  
 STEELER A 1  
 1980 FSL/660 FWL  
 TWP: 23 S - Range: 37 E - Sec. 20  
 Datum=3320

1182 ft

300253657000  
 ARCH PETROLEUM INC  
 RESLER A 1  
 2030 FSL 1880 FWL  
 TWP: 23 S - Range: 37 E - Sec. 20  
 Datum=3316

1422 ft

300253657300  
 ARCH PETROLEUM INC  
 RESLER B 1  
 1980 FSL 1880 FWL  
 TWP: 23 S - Range: 37 E - Sec. 20  
 Datum=3318

1849 ft

300251080800  
 FULFER OIL & CATTLE  
 JOHNSON J C 3  
 1980 FNL 660 FWL  
 TWP: 23 S - Range: 37 E - Sec. 20  
 Datum=3308

1320 ft

300251081400  
 ARCH PETROLEUM INC  
 LAMUNYON-FED 2  
 1980 FNL/660 FWL  
 TWP: 23 S - Range: 37 E - Sec. 21  
 Datum=3311

997 ft

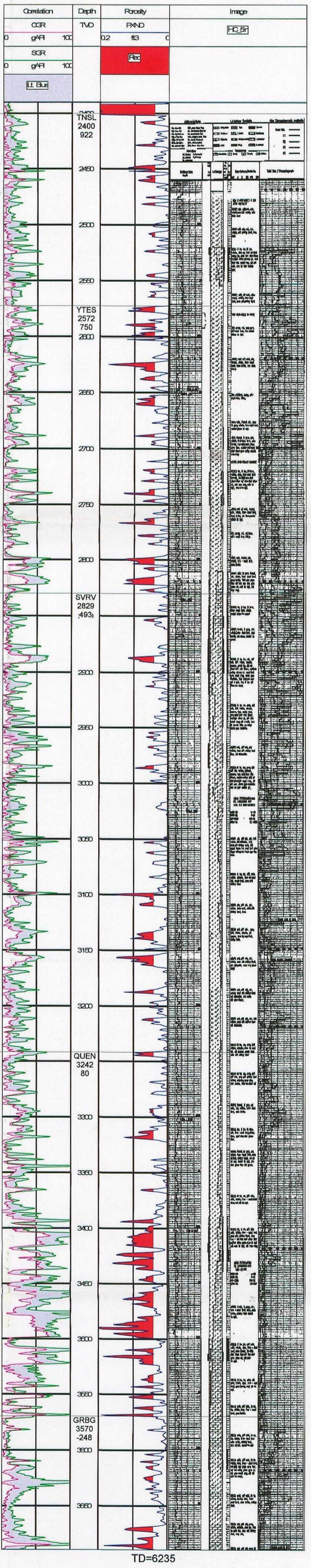
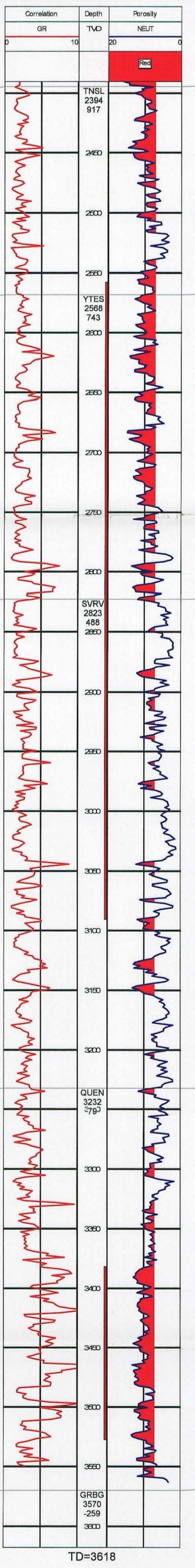
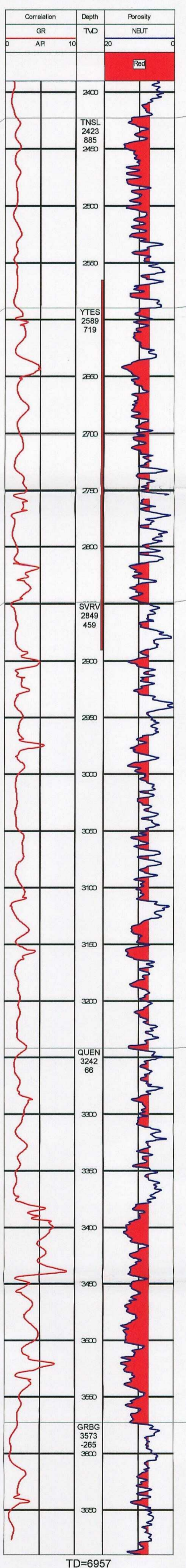
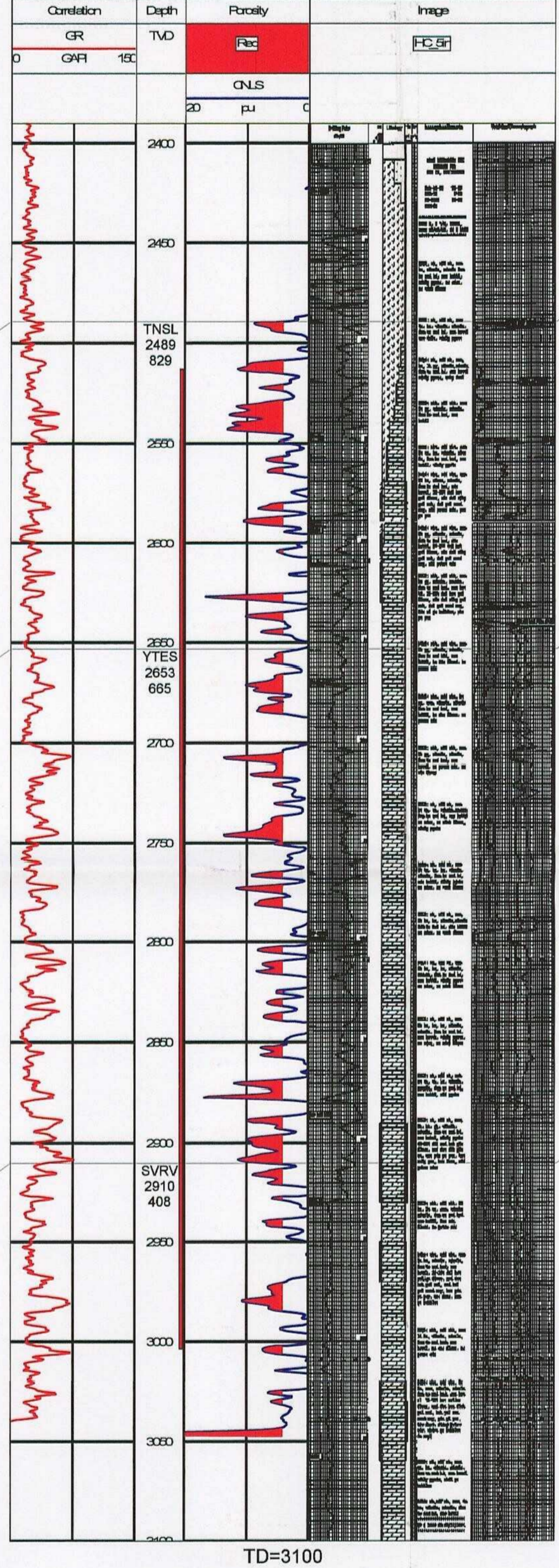
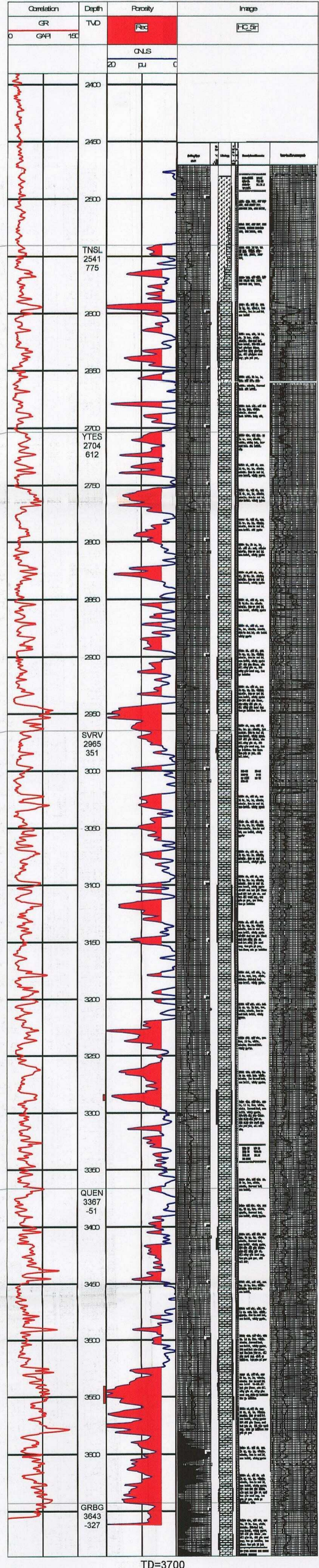
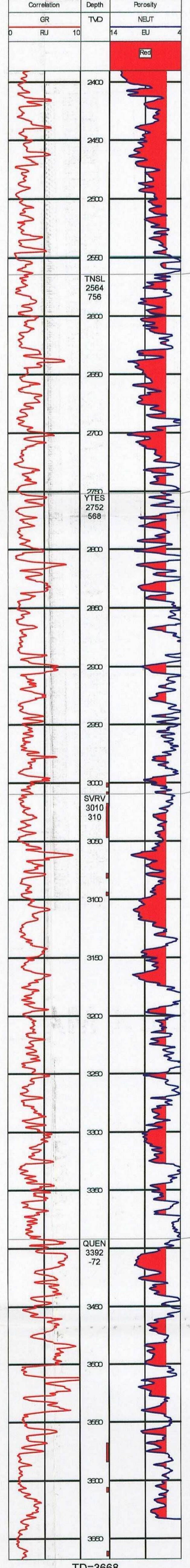
300253497900  
 ARCH PETROLEUM INC  
 LAMUNYON C E 72  
 2310 FNL 1650 FWL  
 TWP: 23 S - Range: 37 E - Sec. 21  
 Datum=3322

Jalmat Completion 1957  
 Cum Gas 1,619,441 MCF

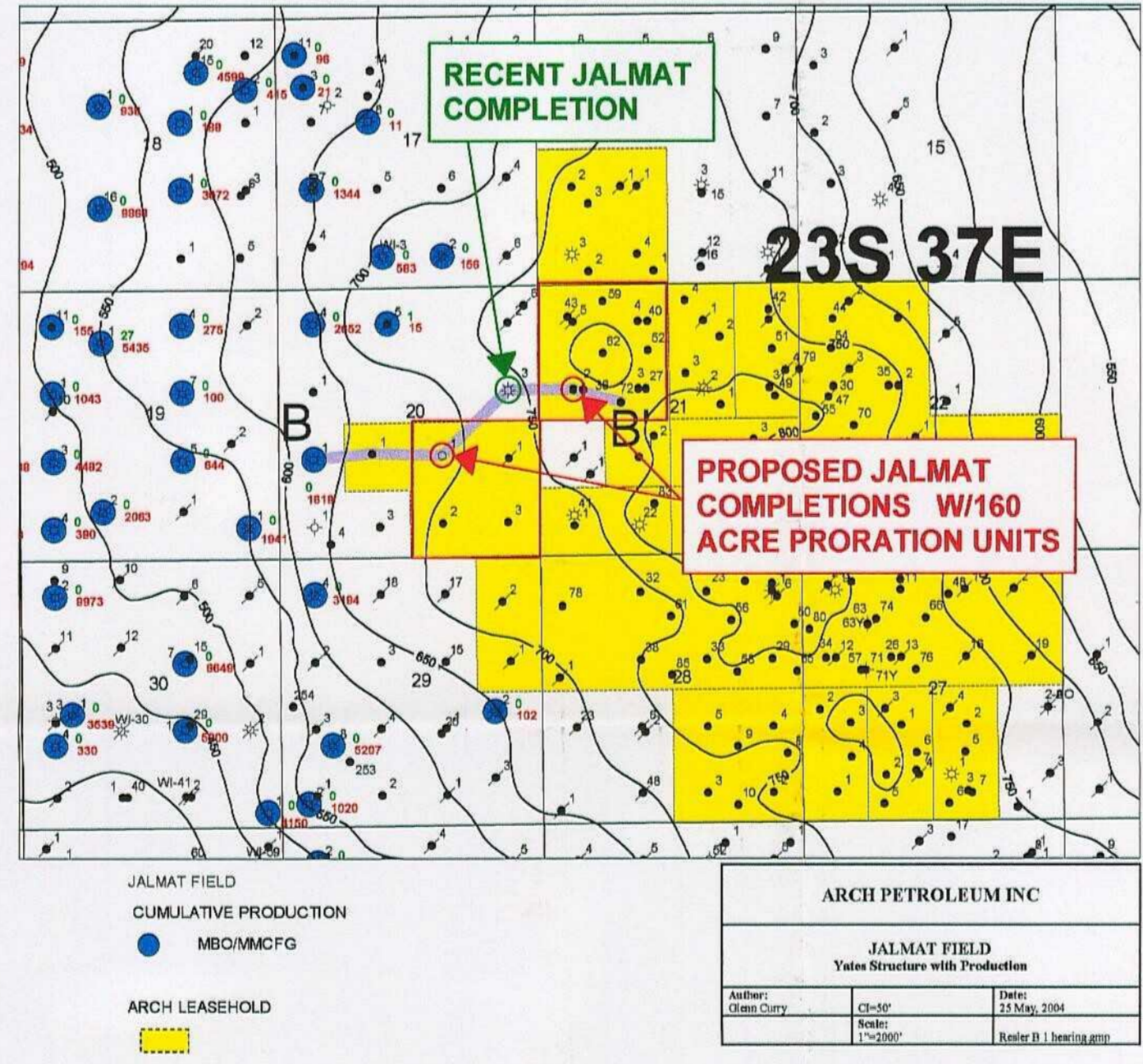
Proposed Jalmat Completion  
 (Well is cased but not completed)

Recent Jalmat Completion

Proposed Jalmat Completion  
 (PB Langlie Mattix and complete in the Jalmat)



INDEX MAP



C.L. CONSERVATION DIVISION  
 CASE NUMBER  
 EXHIBIT NUMBER 7

500

500

0

0