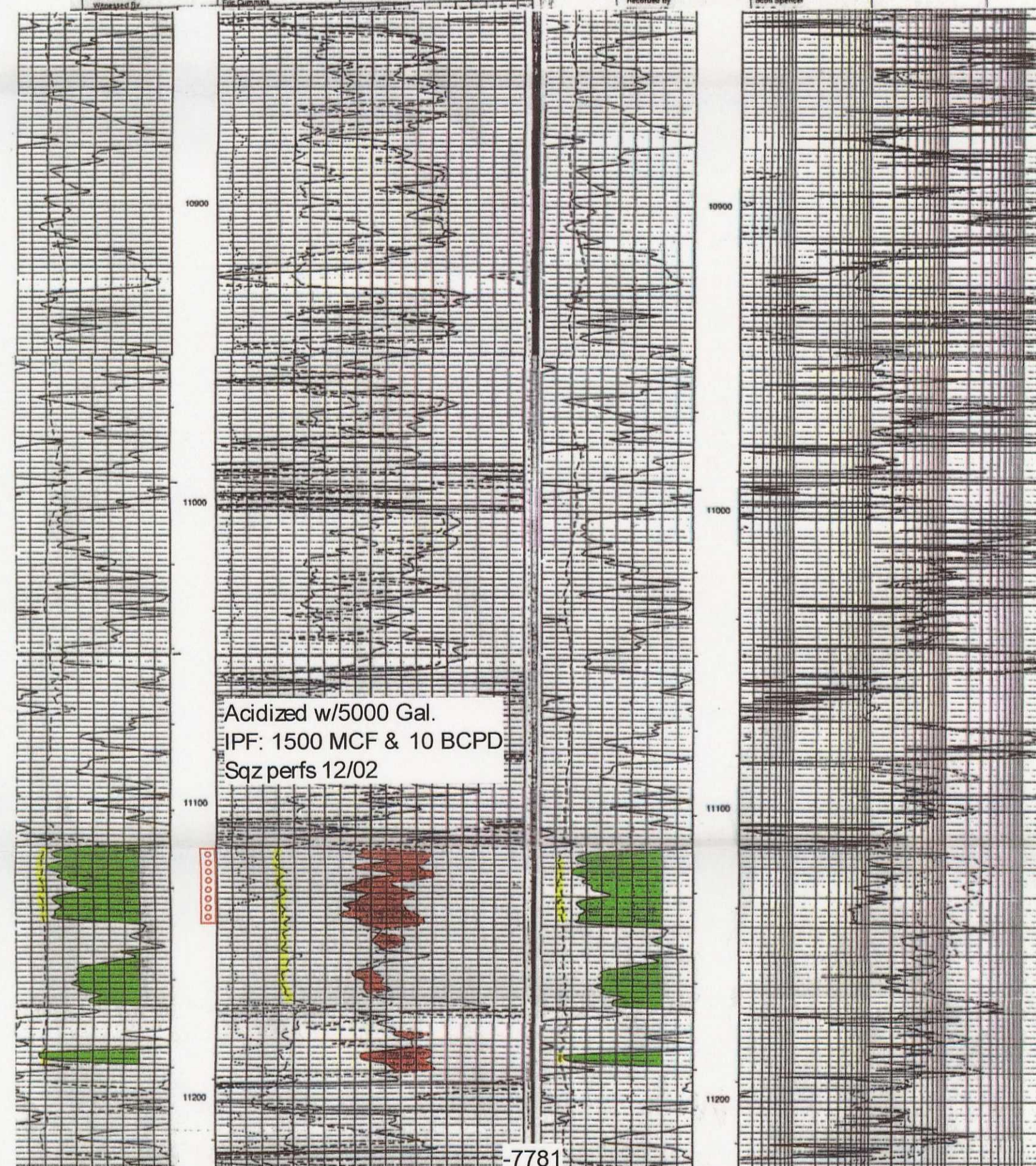
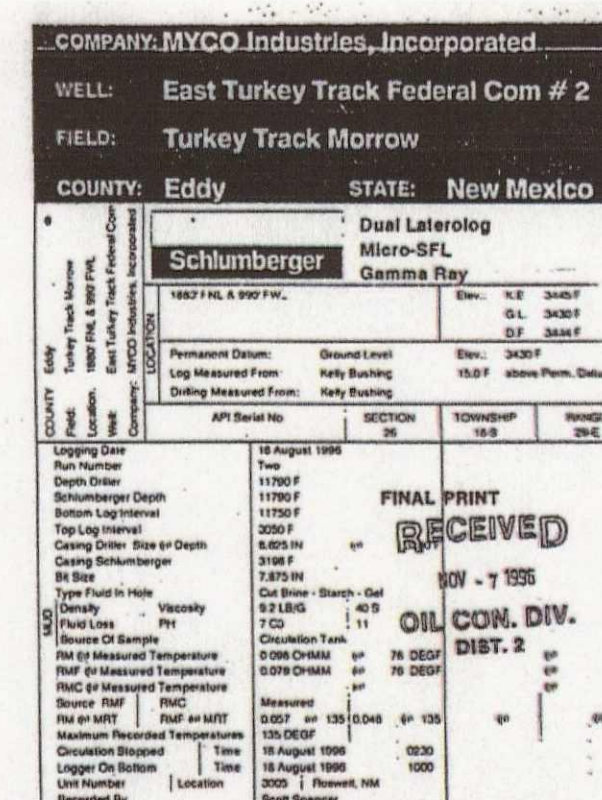
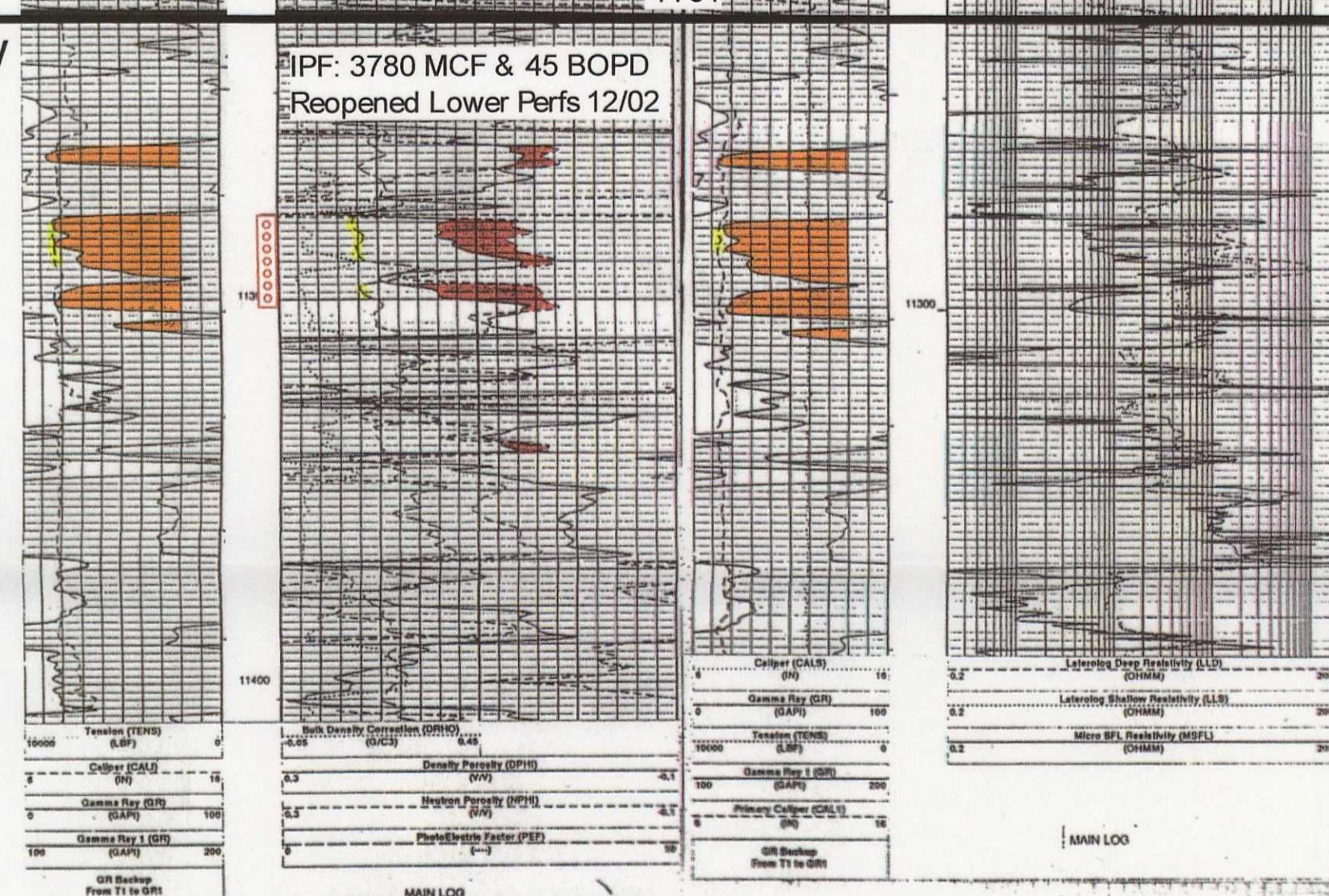


E



Lower  
Morrow



S26-T18S-R29E  
Completed 1996  
Cum Prod: 3.3 BCF  
Current Rate: 550 MCFD

Before the Oil Conservation Division  
Santa Fe, New Mexico  
Case No. 13177 Exhibit No. 8  
Submitted by: Crossland Operating, LLC  
Hearing Date: November 7, 2003