

OIL CONSERVATION COMMISSION
P. O. BOX 2088
SANTA FE, NEW MEXICO 87501

January 5, 1978

Perry R. Bass
Fort Worth National Bank Building
Fort Worth, Texas 76102

Attention: Wm. Arthur Hamilton

Re: Case No. 366
Poker Lake Unit
Initial Participating Area
for the Atoka Formation

Gentlemen:

We hereby approve the Initial Participating Area for the Atoka Formation for the Poker Lake Unit, Eddy County, New Mexico, subject to like approval by the United States Geological Survey and the Commissioner of Public Lands.

One approved copy of the Initial Participating Area is returned herewith.

Very truly yours,

JOE D. RAMEY
Secretary-Director

JDR/LT/fd
enc.

cc: U.S.G.S. - Roswell
Commissioner of Public Lands

C
O
P
Y

OIL CONSERVATION COMMISSION

P. O. BOX 2068

SANTA FE, NEW MEXICO 87501

January 6, 1978

Perry R. Bass
Fort Worth National Bank Building
Fort Worth, Texas 76102

Attention: Wm. Arthur Hamilton

Re: Case No. 366
Poker Lake Unit
1978 Plan of Development

Gentlemen:

We hereby approve the 1978 Plan of Development for the Poker Lake Unit, Eddy County, New Mexico, subject to like approval by the United States Geological Survey and the Commissioner of Public Lands.

One approved copy of the Plan of Development is returned herewith.

Very truly yours,

JOE D. RAMEY
Secretary-Director

JDR/LT/fd
enc.

cc: U.S.G.S. - Roswell
Commissioner of Public Lands



United States Department of the Interior

GEOLOGICAL SURVEY

P. O. Box 26124
Albuquerque, New Mexico 87125

JAN 19 1978

Perry R. Bass
Fort Worth National Bank Building
Fort Worth, Texas 76102

No. 366

Gentlemen:

Your application of December 15, 1977, requests approval of the NW $\frac{1}{4}$ sec. 10, T. 25 S., R. 30 E., N.M.P.M., as the initial Atoka participating area for the Poker Lake unit agreement, Eddy County, New Mexico, based on the completion of unit well No. 42. Unit well No. 42 in the SW $\frac{1}{4}$ sec. 10 was completed on September 16, 1974, for a calculated absolute open flow potential of 16,594 MCF of gas per day from the Atoka interval 13,732 to 13,740. During the period from first sales in August 1976 through October 1977, the well has produced 142,966 MCF of gas, 147 barrels of oil, and 2,755 barrels of water in 347 days of actual operation.

By earlier letter of November 11, 1975, you determined, as unit operator, that unit well No. 42 was not capable of producing in paying unit quantities, and requested our concurrence in the determination. In reply, our letter of January 12, 1977, deferred concurrence until an additional six months production data could be obtained, and an economic and reserve analysis had been received from you supporting the determination.

Inasmuch as the requested analysis has not been received, it has not been determined to the satisfaction of this office whether or not unit well No. 42 is capable of producing unitized substance in paying quantities pursuant to Section 9 of the unit agreement. Accordingly, all three copies of your application for the initial Atoka participating area are returned herewith unapproved.

You are hereby requested to submit your present determination as to whether or not unit well No. 42 is capable of producing unitized substance in paying quantities, supporting such determination with the economic and reserve analysis requested earlier.

If it is established that unit well No. 42 is a commercial unit well capable of producing from the Atoka in quantities sufficient to repay the cost of drilling and operating the well plus a reasonable profit,

then it will be necessary to create an initial Atoka participating area. However, if the well should prove to be non-commercial, as you believed earlier, then a participating area will not be required by the unit agreement, and the well will be produced on a spacing basis.

Sincerely yours,

(ORIG. SGD.) JAMES W. SUTHERLAND

AREA OIL AND GAS SUPERVISOR, SRMA

Enclosures

CC:
Com. Pub. Lands, Santa Fe (1tr. only)
NMOCC, Santa Fe (1tr. only)

← This Copy for

State of New Mexico



Commissioner of Public Lands

PHIL R. LUCERO
COMMISSIONER

February 7, 1978

P. O. BOX 1148
SANTA FE, NEW MEXICO 87501

Perry R. Bass
Fort Worth National Bank Building
Fort Worth, Texas 76102

761.366
Re: 1978 Plan of Development
Poker Lake Unit
Eddy County, New Mexico

ATTENTION: Mr. Wm. Arthur Hamilton

Gentlemen:

The Commissioner of Public Lands has this date approved your 1978 Plan of Development for the Poker Lake Unit, Eddy County, New Mexico. Your plan calls for the drilling of no wells, but will conduct approximately 100 miles of seismic in order to select possible drilling sites. This approval is subject to like approval by the United States Geological Survey and the New Mexico Oil Conservation Commission.

Enclosed is one approved copy for your files.

Please remit a Three (\$3.00) Dollar filing fee.

Very truly yours,

PHIL R. LUCERO
COMMISSIONER OF PUBLIC LANDS

BY:
RAY D. GRAHAM, Director
Oil and Gas Division

PRL/EDG/s
encl.
cc:

OCC-Santa Fe, New Mexico
UGGS-Roswell, New Mexico
UGGS-Albuquerque, New Mexico

RECEIVED
FEB 8 1978
Oil Conservation Commission



United States Department of the Interior

GEOLOGICAL SURVEY

P. O. Box 26124
Albuquerque, New Mexico 87125

MAR 31 1978

Bass Enterprises Production Co.
Attention: Mr. Jens Hansen
Fort Worth National Bank Building
Fort Worth, Texas 76102

Gentlemen:

Your letter of March 23, 1978, indicates that as unit operator of the Poker Lake unit agreement, Eddy County, New Mexico, you have determined that unit well No. 42, SW 1/4 sec. 10, T. 25 S., R. 30 E., N.M.P.M., is not capable of producing unitized substances in paying quantities.

Unit well No. 42 was completed on September 16, 1974, for a calculated absolute open flow potential of 16,594 MCF of gas per day from the Atoka interval 13,732 to 13,740 feet. During the period from first sales in August 1976 through January 1978, unit well No. 42 has produced 155,980 MCF of gas, 147 barrels of oil, and 2,852 barrels of water in 334 days of actual operation. An engineering memorandum attached to your letter advises that an ultimate recovery of 500,000 MCF of gas is expected for the well based on production decline analysis, and that the well cost \$1,517,333 to drill and complete.

This office concurs in your determination that the Poker Lake unit well No. 42 is not capable of producing unitized substances in paying quantities pursuant to the terms of the unit agreement. This concurrence is subject to similar concurrence by the appropriate officials of the State of New Mexico.

Sincerely yours,

(ORIG. SGD.) JAMES W. SUTHERLAND

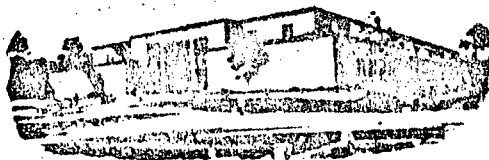
AREA OIL AND GAS SUPERVISOR, SRMA

cc: Com. Pub. Lands, Santa Fe (ltr. only)
NMOCC, Santa Fe (ltr. only)

← This Copy for



State of New Mexico



Commissioner of Public Lands

April 5, 1978

PHIL R. LUCERO
COMMISSIONER

RECEIVED
APR 7 1978
Oil Conservation Commission

P. O. BOX 1148
SANTA FE, NEW MEXICO 87501

Bass Enterprises Production Co.
Fort Worth National Bank Building
Fort Worth, Texas 76102

No. 366

Re: Poker Lake Unit
Eddy County, New Mexico

ATTENTION: Mr. Jens Hansen

Gentlemen:

The United States Geological Survey has advised this office that by your letter of March 23, 1978, to them, you have determined that unit well No. 42, SW/4NE/4 of Section 10, Township 25 South, Range 30 East, N.M.P.M., is not capable of producing unitized substances in paying quantities.

This letter is to advise you that this office concurs in your determination and the USGS determination that well No. 42 is not capable of producing unitized substances in paying quantities pursuant to the terms of the unit agreement.

Very truly yours,

PHIL R. LUCERO
COMMISSIONER OF PUBLIC LANDS

BY:
RAY D. GRAHAM, Director
Oil and Gas Division

PRL/RDG/s

cc: OCC-Santa Fe, New Mexico
USGS-Roswell, New Mexico
USGS-Albuquerque, New Mexico

BASS ENTERPRISES PRODUCTION CO.
FORT WORTH NATIONAL BANK BUILDING
FORT WORTH, TEXAS 76102

November 14, 1978

NOV 27 1978

Santa Fe

United States Geological Survey
Drawer 1857
Roswell, New Mexico 88201

Commissioner of Public Lands
P. O. Box 1148
Santa Fe, New Mexico 87501

✓ Oil Conservation Commission
P. O. Box 2088
Santa Fe, New Mexico 87501

Approve

No. 366

Re: Supplemental Plan of
Development for 1978
Poker Lake Unit
Eddy County, New Mexico

Gentlemen:

With reference to our Plan of Development for 1978 covering the Poker Lake Unit, we wish to supplement this year's Plan of Development by including additional development which we anticipate transpiring before the end of the year.

1978 ACTIVITY

Seismic continues to be conducted in this unit in compliance with the 1978 Plan of Development.

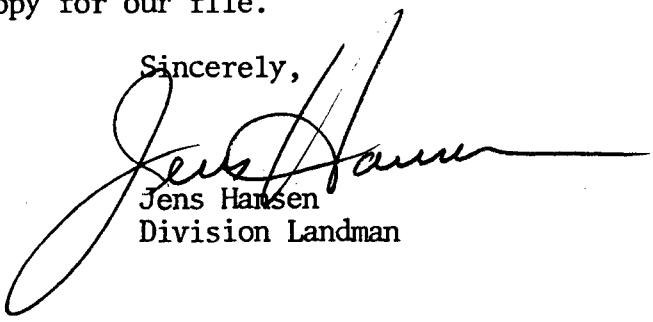
ADDITIONAL DEVELOPMENT ANTICIPATED FOR 1978

Poker Lake Unit #46 - 5,000' Delaware test to be located 660' from the North line and 660' from the West line Section 5, Township 25 South, Range 31 East.

United States Geological Survey, et al.
November 14, 1978
Page 2

If this Supplemental Plan of Development meets with your approval, please indicate in the appropriate space provided and return one copy for our file.

Sincerely,


Jens Hansen
Division Landman

JH:dc

Agreed and accepted this
____ day of _____, 1978.

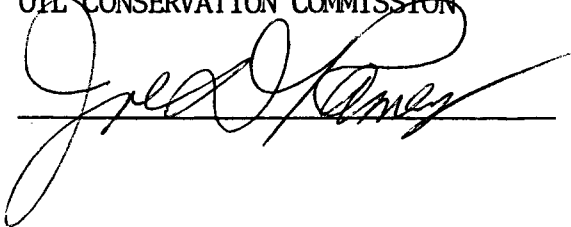
UNITED STATES GEOLOGICAL SURVEY

Agreed and accepted this
____ day of _____, 1978.

COMMISSIONER OF PUBLIC LANDS

Agreed and accepted this
27th day of December, 1978.

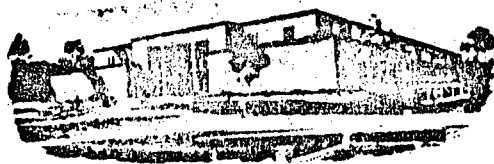
OIL CONSERVATION COMMISSION



Fred J. Ramey



State of New Mexico



Commissioner of Public Lands

November 27, 1978

PHIL R. LUCERO
COMMISSIONER

P. O. BOX 1148
SANTA FE, NEW MEXICO 87501

Bass Enterprises Production Co.
Fort Worth National Bank Building
Fort Worth, Texas 76102

Re: Supplemental Plan of
Development for 1978
POKER LAKE UNIT
Eddy County, New Mexico

ATTENTION: Mr. Jens Hansen

Gentlemen:

Ms. 366

The Commissioner of Public Lands has this date approved your Supplemental Plan of Development for 1978, for the Poker Lake Unit, Eddy County, New Mexico. Such plan proposes the drilling of well No. 46. Our approval is subject to like approval by the United States Geological Survey and the New Mexico Oil Conservation Division.

Enclosed is one approved copy for your files.

Please remit a Three (\$3.00) Dollar filing fee.

Very truly yours,

PHIL R. LUCERO
COMMISSIONER OF PUBLIC LANDS

BY:
RAY D. GRAHAM, Director
Oil and Gas Division

PRL/RDG's
encls.
cc:

OCD-Santa Fe, New Mexico
USGS-Roswell, New Mexico
USGS-Albuquerque, New Mexico

Oil Conservation Commission
NOV 28 1978
RECEIVED

OIL CONSERVATION DIVISION

P. O. BOX 2088

SANTA FE, NEW MEXICO 87501

December 6, 1978

Bass Enterprises Production Co.
Fort Worth National Bank Building
Fort Worth, Texas 76102

Attention: Jens Hansen

Re: Case No. 366
Poker Lake Unit
1978 Supplemental
Plan of Development

Gentlemen:

We hereby approve the 1978 Supplemental Plan of Development for the Poker Lake Unit, Eddy County, New Mexico, subject to like approval by the United States Geological Survey and the Commissioner of Public Lands.

One approved copy of the Supplemental Plan of Development is returned herewith.

Yours very truly,

JOE D. RAMEY
Director

JDR/LT/fd
enc.

cc: U.S.G.S. - Roswell
Commissioner of Public Lands

C
O
P
Y



United States Department of the Interior

GEOLOGICAL SURVEY

DEC-8-1978

P. O. Box 26124
Albuquerque, New Mexico 87125

DEC 07 1978

Bass Enterprises Production Company
Attention: Mr. Jens Hansen
Fort Worth National Bank Building
Fort Worth, Texas 76102

MO. 366

Gentlemen:

On this date, your supplement to the 1978 plan of development and operation for the Poker Lake unit area, Eddy County, New Mexico, was approved. Such approval is subject to like approval by the appropriate State officials.

One approved copy is enclosed.

Sincerely yours,

(ORIG. SGD.) JAMES W. SUTHERLAND

Oil and Gas Supervisor, SRMA

Enclosure

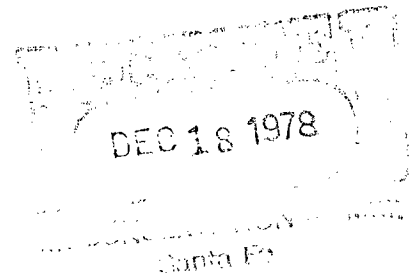
cc:

NMOCD, Santa Fe (ltr. only)

Com. Pub. Lands, Santa Fe (ltr. only)

This Copy for

BASS ENTERPRISES PRODUCTION CO.
FORT WORTH NATIONAL BANK BUILDING
FORT WORTH, TEXAS 76102
December 8, 1978



United States Geological Survey
Drawer 1857
Roswell, New Mexico 88201

Commissioner of Public Lands
P. O. Box 1148
Santa Fe, New Mexico 87501

✓ Oil Conservation Commission
P. O. Box 2088
Santa Fe, New Mexico 87501

Approve

No. 366

Re: 1979 Plan of Development
Poker Lake Unit
Eddy County, New Mexico

Gentlemen:

In compliance with Section 10 of the Poker Lake Unit Agreement, Perry R. Bass, as Operator, hereby submits for your approval a Plan of Development for 1979.

History of Past Development

We refer to our previous Plans of Development for a detailed description on this Unit. To date, we have drilled or caused to be drilled, 45 wells within the Unit area.

1978 Activity

Approximately 156 miles of seismic was conducted in order to evaluate the Unit for future development.

Poker Lake #46 - Located 660' FNL and 660' FWL, Section 5, Township 25 South, Range 31 East, was drilled to a depth of 5,000' to test the Delaware formation. The well was plugged and abandoned.

Future Development

Poker Lake #47 - SE/4 Section 3, Township 25 South, Range 30 East, to test the Delaware formation.

Poker Lake #48 - SE/4 Section 10, Township 24 South, Range 30 East, to test the Delaware formation.

The further evaluation of the seismic data obtained from the 1978 Seismic Program may result in additional well locations.

Additional Development

The Plan of Development shall constitute the drilling obligations of the Unit Operator under the terms of the Poker Lake Unit Agreement ending December 31, 1979. Before this Plan expires, a subsequent Plan of Development will be forwarded for your approval.

Modifications

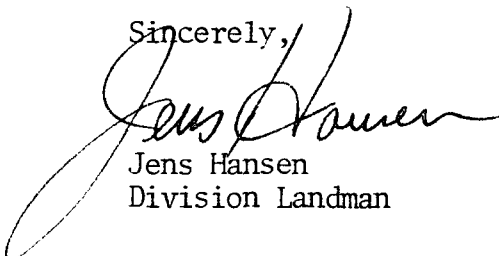
It is understood that this Plan of Development may be modified from time to time to meet changing conditions.

Effective Date

This Plan of Development shall be effective January 1, 1979.

If this Plan of Development meets with your approval, please indicate by signing in the appropriate space provided below and return one copy for our records.

Sincerely,



Jens Hansen
Division Landman

JH:dc

United States Geological Survey, et al.
December 8, 1978
Page 3

Agreed to and accepted this
____ day of _____, 1978.

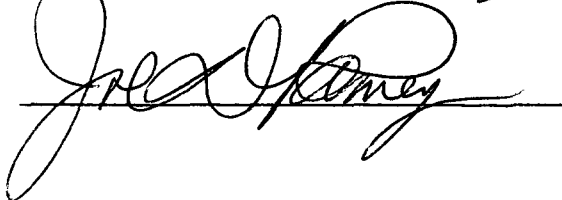
UNITED STATES GEOLOGICAL SURVEY

Agreed to and accepted this
____ day of _____, 1978.

COMMISSIONER OF PUBLIC LANDS

Agreed to and accepted this
19th day of December, 1978.

OIL CONSERVATION COMMISSION *DIVISION*



OIL CONSERVATION DIVISION

P. O. BOX 2088

SANTA FE, NEW MEXICO 87501

December 19, 1978

Bass Enterprises Production Co.
Fort Worth National Bank Building
Fort Worth, Texas 76102

Attention: Jens Hansen

Re: Case No. 366
Poker Lake Unit
1979 Plan of Development

Gentlemen:

We hereby approve the 1979 Plan of Development for the Poker Lake Unit, Eddy County, New Mexico, subject to like approval by the United States Geological Survey and the Commissioner of Public Lands.

One approved copy of the Plan of Development is returned herewith.

Yours very truly,

JOE D. RAMEY
Director

JDR/LT/fd
enc.

cc: U.S.G.S. - Roswell
Commissioner of Public Lands

C
O
P
Y