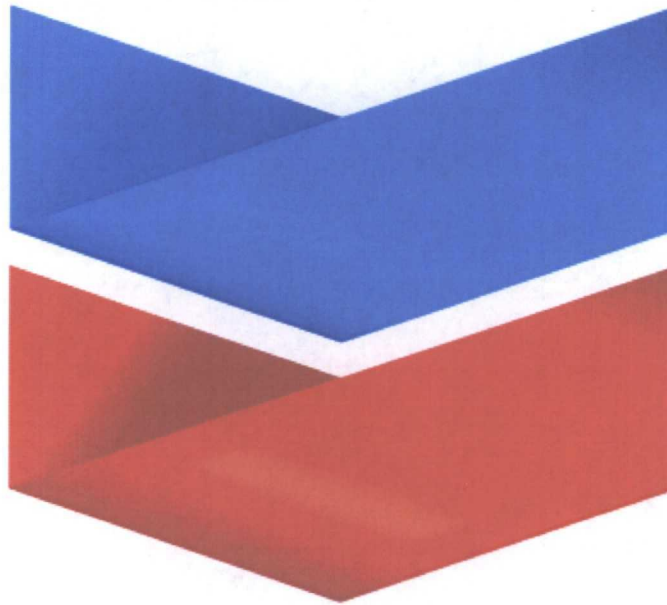
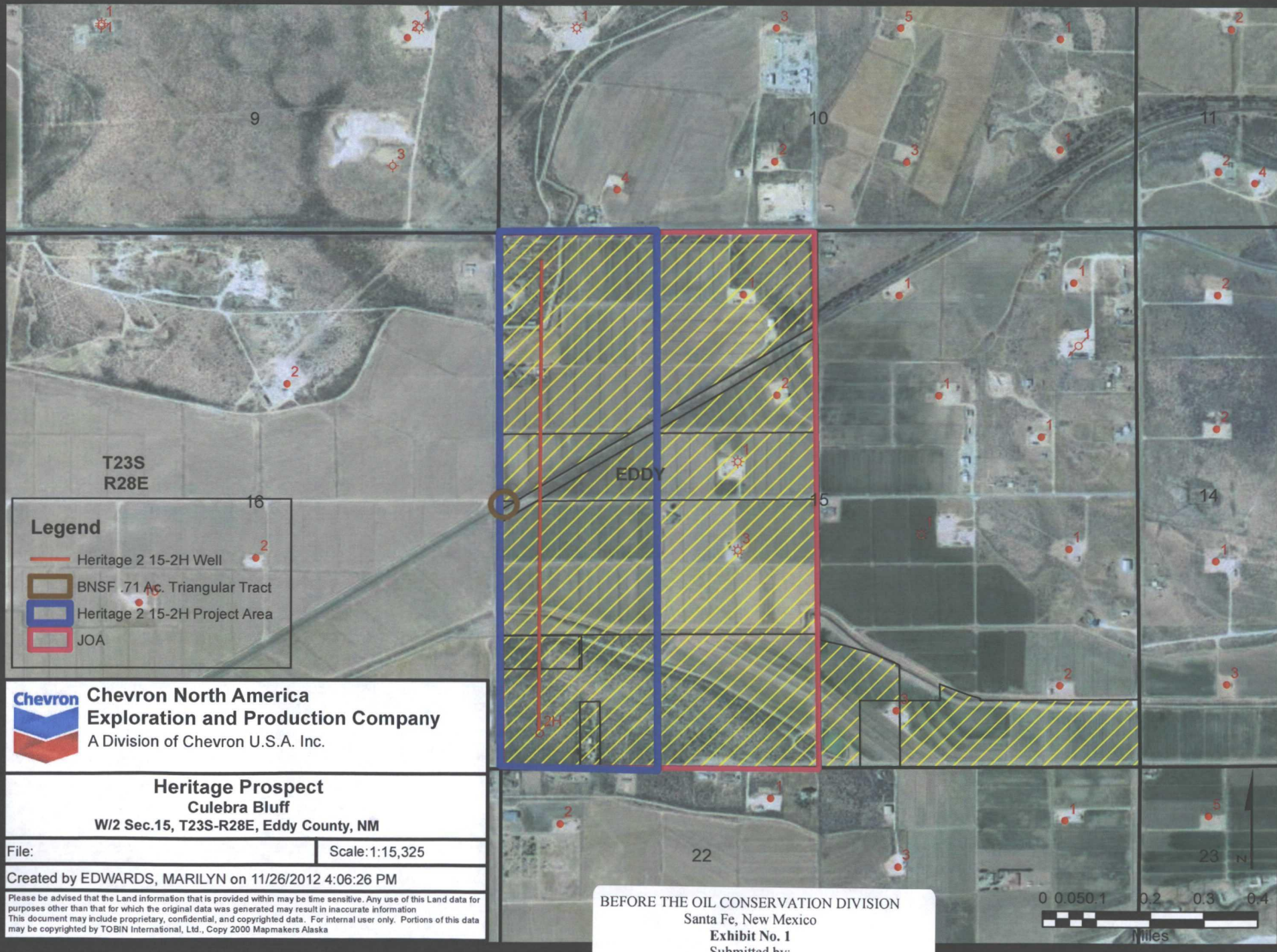


# **Chevron**



**Case No. 14929**  
**Heritage 2 15 No. 2H Well**



### Legend

- Heritage 2 15-2H Well
- BNSF .71 Ac. Triangular Tract
- Heritage 2 15-2H Project Area
- JOA



**Chevron North America**  
**Exploration and Production Company**  
A Division of Chevron U.S.A. Inc.

### Heritage Prospect Culebra Bluff

W/2 Sec.15, T23S-R28E, Eddy County, NM

File:

Scale:1:15,325

Created by EDWARDS, MARILYN on 11/26/2012 4:06:26 PM

Please be advised that the Land information that is provided within may be time sensitive. Any use of this Land data for purposes other than that for which the original data was generated may result in inaccurate information. This document may include proprietary, confidential, and copyrighted data. For internal use only. Portions of this data may be copyrighted by TOBIN International, Ltd., Copy 2000 Mapmakers Alaska

BEFORE THE OIL CONSERVATION DIVISION  
Santa Fe, New Mexico

Exhibit No. 1

Submitted by:

**CHEVRON U.S.A. INC.**

Hearing Date: November 28, 2012