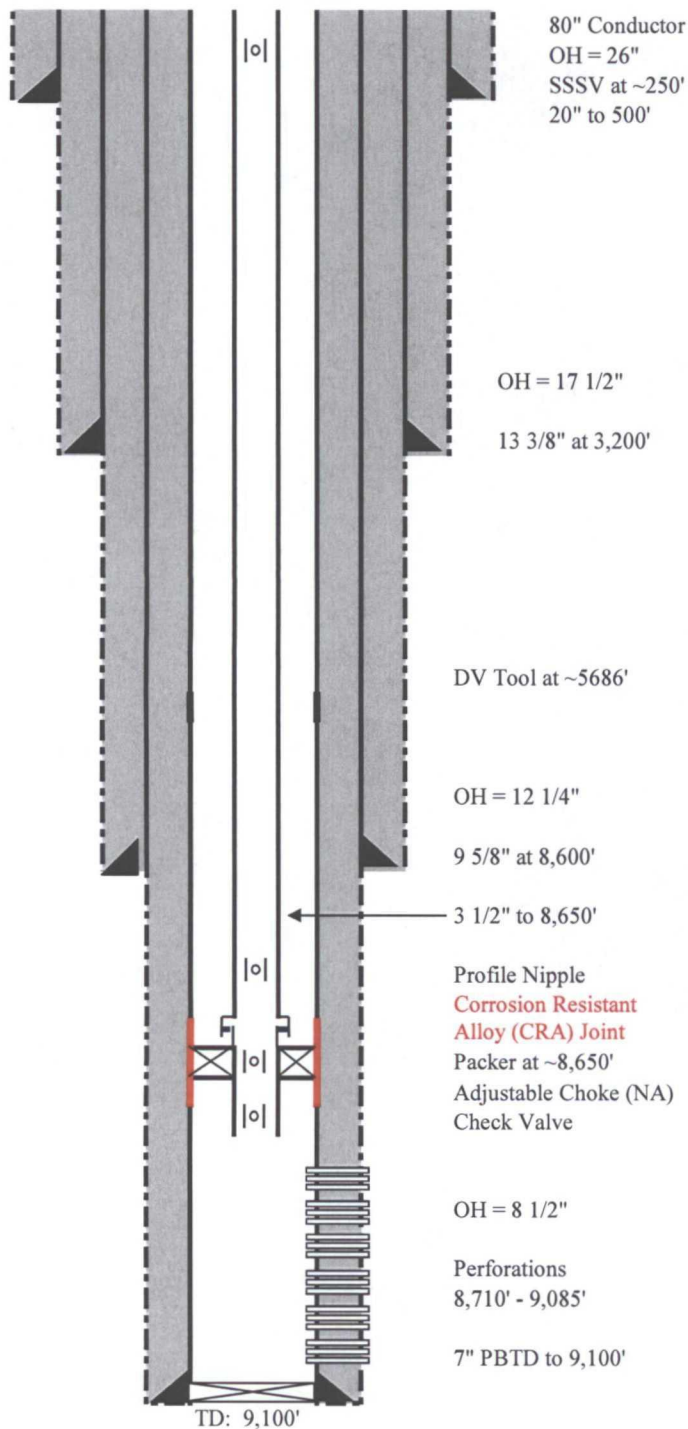


Location: 2120 FSL & 2120' FWL
STR S30-T18S-R37E
County, St.: LEA COUNTY, NEW MEXICO



SURFACE CASING

20", 94.00#/ft, J-55, BTC at 500'

UPPER INTERMEDIATE CASING

13 3/8", 68.00#/ft, J-55, STC at 3,200'

LOWER INTERMEDIATE CASING:

9 5/8", 47.0 #/ft, HCL-80, LTC at 8,600'

PRODUCTION CASING:

7", 26 #/ft, HLC-80, Prem at 9,100'

ANNULAR FLUID:

Diesel Fuel from top of packer to surface

TUBING:

Subsurface Safety Valve at ~259 ft

3 1/2", 9.3#/ft, HLC-80, Premium thread at ~8,650'

PACKER:

Permanent Production Packer @ 8,650

Adj. Choke (if needed, placed in nipple below packer)

Check valve (if needed, placed in nipple below packer)

PERFORATIONS:

Primary Target	Secondary Target*
Lower Bone Springs	NA
8,710'-8,730'	
8,755'-8,765'	
8,780'-8,795'	
8,880'-8,890'	
8,925'-8,930'	
8,945'-8,975'	
8,985'-9,000'	
9,045'-9,085'	

Linam AGI #2 Proposed Well Design