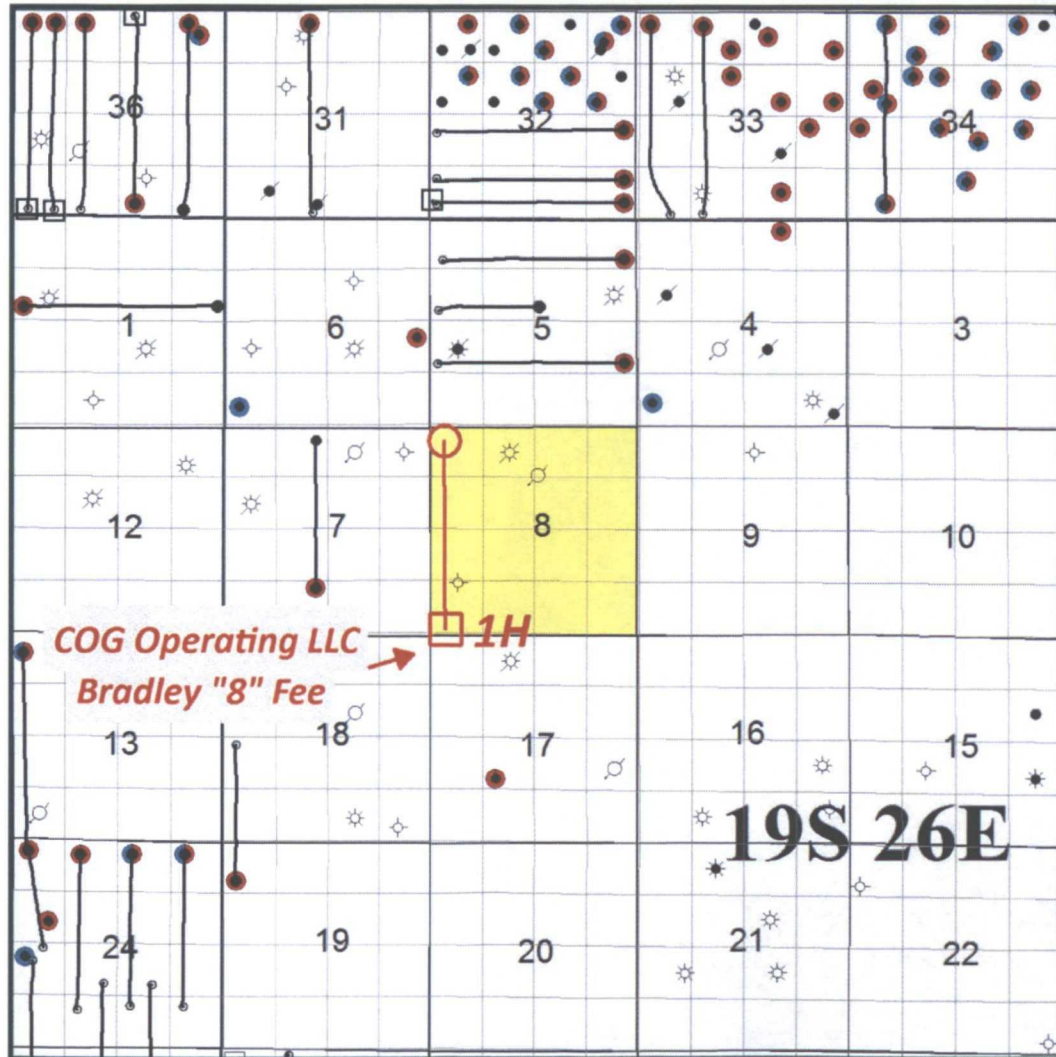


**COG OPERATING LLC
BRADLEY "8" FEE # 1H
HEARING
(API:30-015-41162)**

Lakewood Area - Eddy County, New Mexico




Lakewood Area – Bradley “8” Fee #1H Lease Map



Map Legend

 Paddock Producer

 Blinebry Producer

BHL  COG - Horizontal Location
(Bradley “8” Fee #1H)

SHL 



Concho Acreage



BEFORE THE OIL CONSERVATION DIVISION

Santa Fe, New Mexico

Exhibit No. 1

Submitted by:

COG OPERATING LLC

Hearing Date: April 4, 2013